



BMPs: The Backbone of Surface Water Quality in America Today!

Best Management Practices (BMPs) are the backbone of erosion prevention and sediment control and are crucial for mitigating stormwater runoff and protecting our precious water resources. It is imperative that professionals in the stormwater sector prioritize the use of BMPs and stay updated with the latest advancements to ensure sustainable and responsible management of our water resources for the benefit of both present and future generations.



Upfront planning (above) leads to effective BMPs such as swales.

[This article](#) aids in that endeavor and provides insights into initial site BMP planning, installation techniques, and stabilization practices. It underscores the importance of strategic planning, effective implementation, and ongoing monitoring to achieve effective stormwater management outcomes.

[The article covers the following topics and is definitely worth a quick read!](#)

- (1) The importance of non-structural BMPs
- (2) The importance of reviewing cut and fill requirements
- (3) The importance of maintaining existing vegetation
- (4) Look at the project in smaller "chunks"
- (5) Install perimeter and critical basin and trap/swale BMPs first
- (6) The importance of effective communication and collaboration

It is always our aim at the [NPDES Stormwater Training Institute](#) to share information and resources to help equip construction and stormwater professionals with the knowledge and best practices necessary to successfully design, treat and manage stormwater, prevent erosion, and control sediment, to ensure that our precious surface water resources will continue to be protected! If you're not already a member of the International Erosion Control Association (IECA.org) or your state focused stormwater association like (SESWA, GAWP, Indiana MS4 Partnership, etc.), do yourself a big favor by joining one. The stormwater community professionals are incredible, with most being very knowledgeable and willing to jump at the chance to help. If there are any particular topics you'd like to see us discuss more, never hesitate to reach out and let us know. We'd love to hear from you!

- Luke



Course Schedule

[View Schedule](#)



Check Exam Results

[Get Exam Results](#)



Newsletter Archives

[See Newsletters](#)

We offer private, on-site or online training for your organization – tailored to your needs!

[Learn More](#)

ANIONIC POLYACRYLAMIDE AS A PASSIVE TREATMENT BMP

As a passive stormwater treatment Best Management Practice (BMP) on construction sites, flocculants—especially the anionic forms of polyacrylamide—are specialized chemicals. When used appropriately, they play a crucial role in enabling construction sites to retain fine silt and clay particles onsite, preventing their entry into creeks, rivers, and lakes.



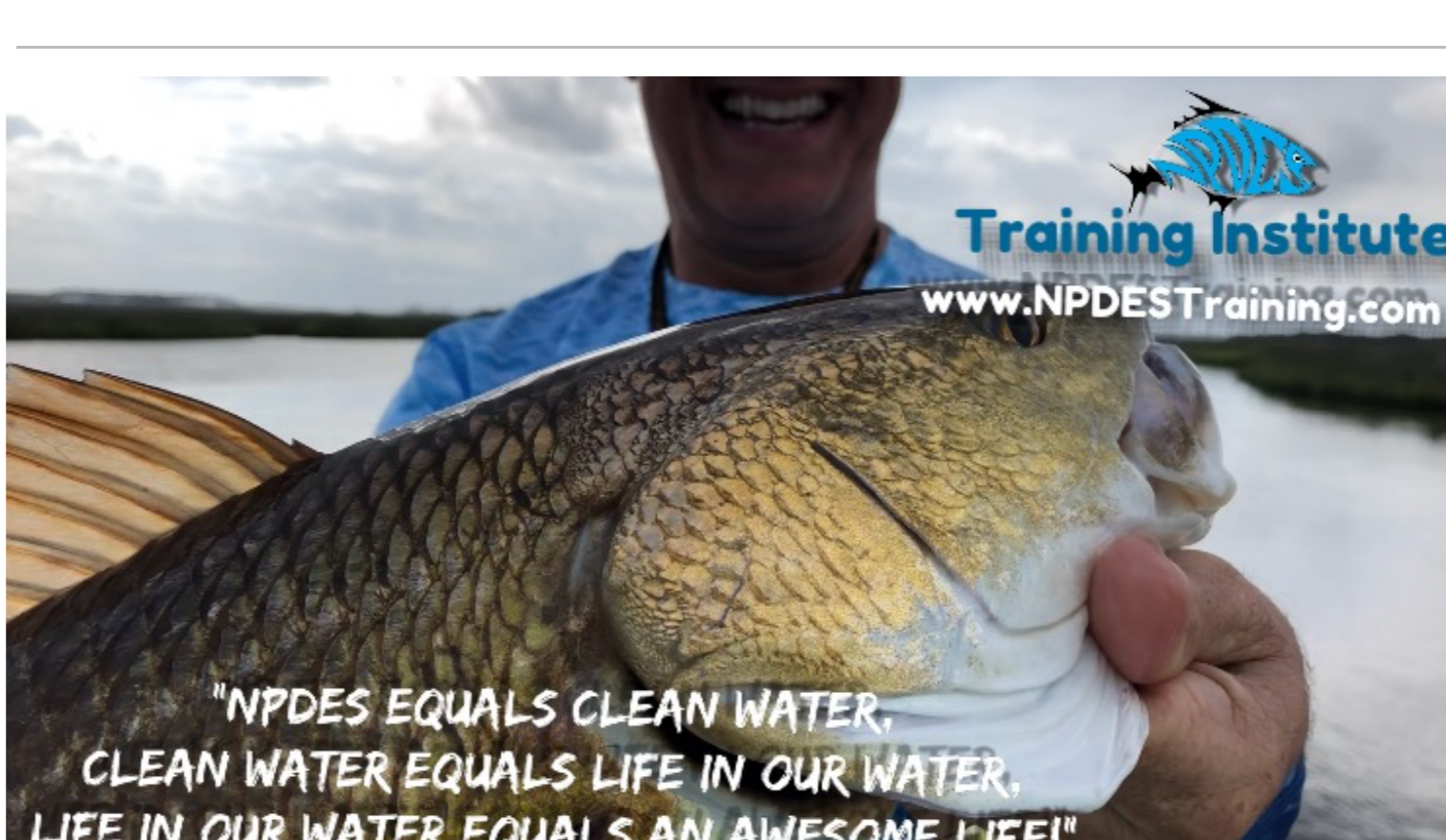
Applied Polymers, Inc.
<https://www.siltstop.com>

By effectively aggregating these fine particles into larger clumps, flocculants facilitate their rapid settling in an onsite sediment basin, sediment trap, or similar structures, aiding in their removal from surface water resources.



By Billur Kazaz, MS, CPESC-IT; Michael A. Perez, Ph.D., CPESC; Wesley N. Donald, Ph.D., CPESC

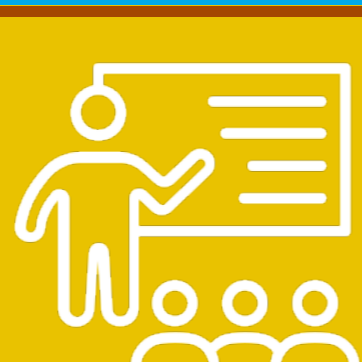
[This article](#) sheds light on how this enhanced stormwater management practice can significantly contribute to improved water quality. While there are both cationic and anionic polymers for flocculation, it's the anionic forms that are consistently found to pass required toxicity tests for construction site sediment flocculation. Continue reading to discover the safe ways in which flocculants can be incorporated into water treatment processes.



"Our stormwater training is all about helping American's protect the cornerstone of our quality of life, which are clean creeks, rivers and lakes! The unity that comes from respecting and appreciating our individual roles in growing a strong and beautiful America is critical!"

Luke Owen
Owner, NPDES Training Institute

Upcoming Courses



In-Person

- [Level 1A Fundamentals](#)
- [Level 1B Advanced Fundamentals](#)
- [Level II Introduction to Design](#)
- [Level 1A/1B & Level II Recertification](#)
- [MS4 Compliance & Enforcement Certified Inspector \(MS4CECI\)](#)
- [MS4 Green Infrastructure Technician \(MS4GIT\)](#)
- [MS4CECI Recertification](#)
- [HVPS & Industrial Site Stormwater Inspections](#)



Online/Zoom

- [Level 1A \(Blue Card\) Recert w/Trees, Design & Construction](#)
- [Level 1A \(Blue Card\) Recert w/GEOS & NPDES General Permit](#)
- [Level 1B \(Red Card\) Recert w/Trees, Design & Construction](#)
- [Level 1B \(Red Card\) Recert w/GEOS & NPDES General Permit](#)
- [Level II \(Tan/Grey Card\) Recert w/Trees, Design & Construction](#)
- [Level II \(Tan/Grey Card\) w/GEOS & NPDES General Permit](#)
- [MS4 Stormwater Inspector](#)
- [MS4CECI Renewal Course](#)
- [1A/1B/II Recertification \(ZOOM\)](#)

Course Spotlight

HVPS & Industrial Site Stormwater Inspections



In this 4-hour training, attendees will not only meet the MS4 training requirements set forth in the NPDES Permit, but just as importantly will leave with the education, training, and materials needed to perform an effective stormwater inspection that will help prevent illicit discharges, thereby protecting the residents, visitors and aquatic organisms living in neighboring watersheds. Upon completion of this Inspection course, you will learn how to perform your field inspections with confidence every time, no matter the facility being inspected.

The course will answer many common questions, a few of which are listed below.

- Can misunderstanding the definition of an "outfall" or a stormwater "structure" cause your site inspection to be ineffective?
- How do you deal with difficult people during your site inspection?
- Should a HVPS facility be inspected differently than an Industrial Facility? If so, how?
- What is a highly visible pollutant source (HVPS) versus an industrial facility, really?
- What makes the restaurant industry more of a potential watershed polluter than the manufacturing industry?
- What forms and/or questions should the MS4 inspector ask when performing their inspection?

Upcoming HVPS & Industrial Site Stormwater Inspections Courses:

- March 25, 2024 (Buford)
- October 16, 2024 (Buford)

[Register for the HVPS Course Now](#)

Resources, Tips, Insights

We offer private trainings!

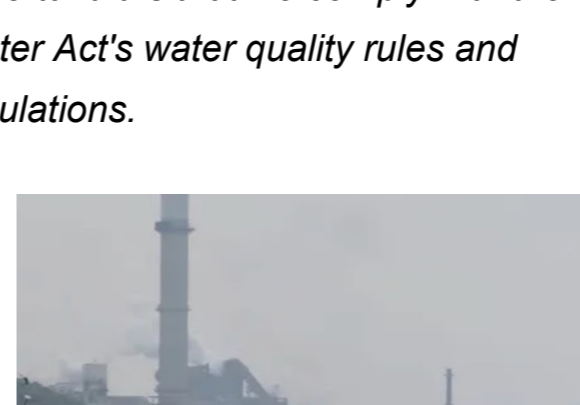
We will come to you to train! If you have a large group that all need the same training, we can set up a private training with one of our skilled instructors and come to YOU.

[REQUEST A PRIVATE TRAINING](#)



America's past water pollution problems and the pollution we find today in regions like Asia, the Middle East and South America are just another reminder of how important it is that we comply with the Clean Water Act's water quality rules and regulations.

Every time you go fishing, or jump in a lake to take a swim, be grateful for our NPDES permitting program that makes it all possible. Respecting our neighbors downstream is what America is all about and it's the NPDES permit that helps us do that.



Permit compliance is an investment in our nation's future generations so that our children will also have an equally great place to live, swim, fish, boat and hunt tomorrow!

Follow Us



Contact Us

678-469-5120
rta@npdestraining.com

[Unsubscribe](#)