



[Visit Our Website](#) [View All Courses](#)

Keeping America, the Beautiful!

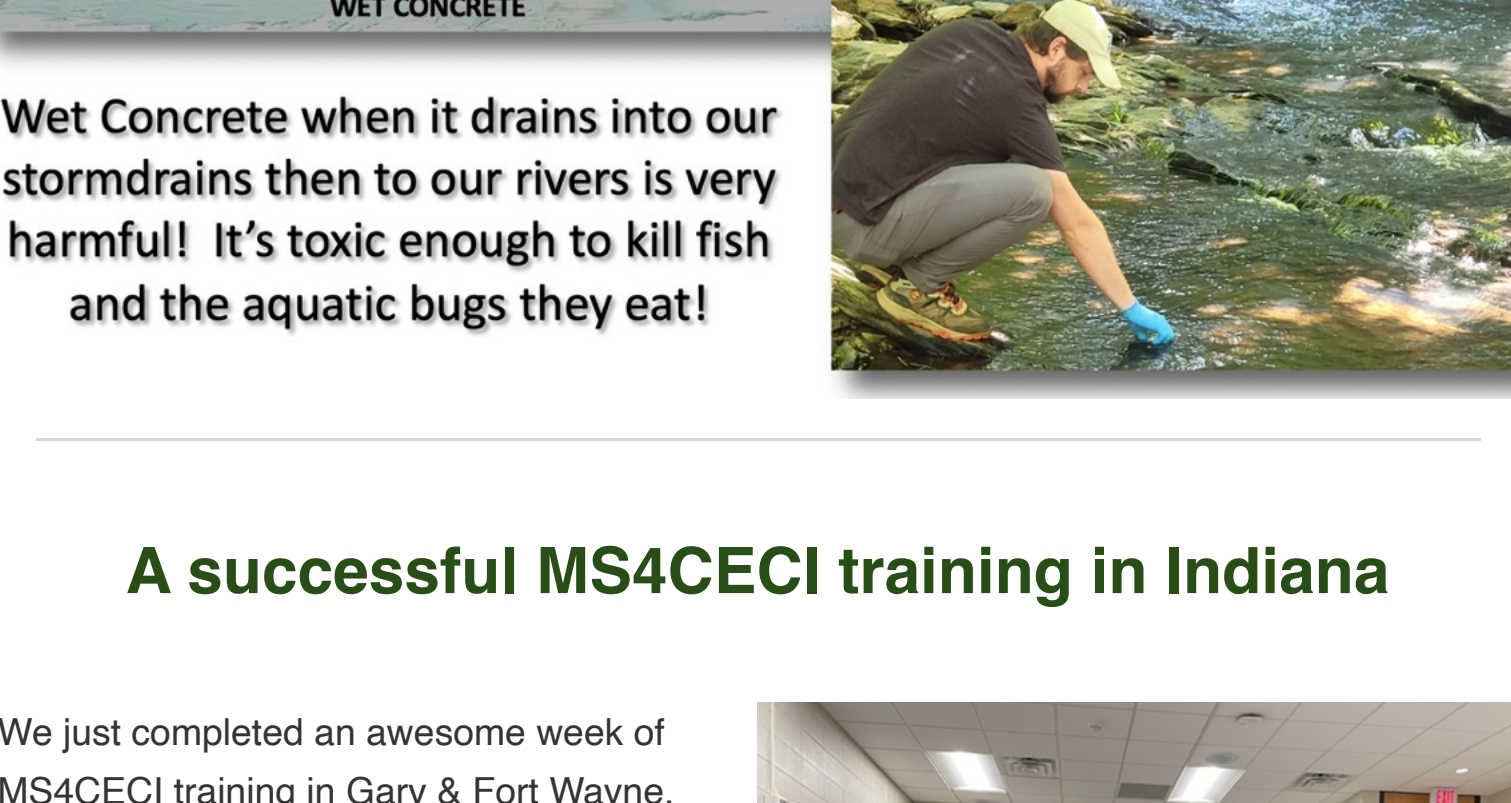
A country that has both well-paying jobs and good water quality makes people want to live in it. Our ability to profit from our hard work coupled with improving and maintaining surface water quality are TOP CONTENDERS for the #1 spot of what makes America, the Beautiful! "Together, they are an integral part of the fabric that makes America a country that is truly beautiful and capable of giving its citizens a quality of life worth living." Without either one of them, America would be no different than the countries many people are fleeing from today. Many do not realize that in America, we invest back into our environment mostly through government programs. We pay because we can afford to, with our good paying jobs. That said, a good job is only half the equation to living a life that is enjoyable. The other half involves spending our hard-earned money on fun things at stores like Bass Pro Shops, Adventure Outdoors and Academy Sports to name a few. If you doubt that, just drive to a Bass Pro Shop store this weekend; sit in your car for a minute and witness the hundreds, if not thousands of people spending their money on fishing poles, reels, lures and fish finders, not only for themselves, but also as gifts for that special someone they hope will share their joy of playing in America's environment.

Spreading the good news of America's Point Source NPDES permitting program is my chosen profession, and it stems from my love of America, a country that has provided myself, my family and friends an incredible quality of life. A country I served as a United States Marine and a country that continues to give back much more than I have given it. Today, I've learned that my quality of life is directly dependent on both (1) the money I get from my job, and (2) the water quality I get to enjoy. Without either one of them, the lives of over 330 million Americans would suffer greatly.

Keep America the Beautiful, comply with your NPDES Permit. I guarantee you, your children will thank you later!

Sincerely,

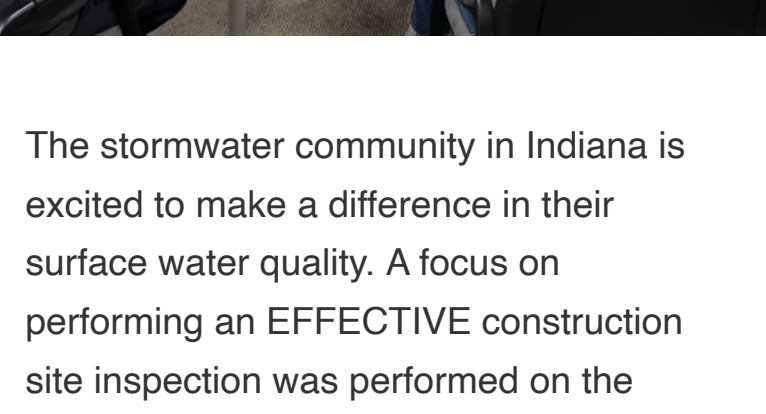
T. Luke Owen, PG MS4CECI MS4GIT



Wet Concrete when it drains into our stormdrains then to our rivers is very harmful! It's toxic enough to kill fish and the aquatic bugs they eat!

A successful MS4CECI training in Indiana

We just completed an awesome week of MS4CECI training in Gary & Fort Wayne, Indiana! From classroom discussions about urban pollution, illicit discharges and the differences between point sources and non-point sources, to the construction trailer for a SWPPP and records review exercise, then ending with a site walk and field investigation of BMPs.

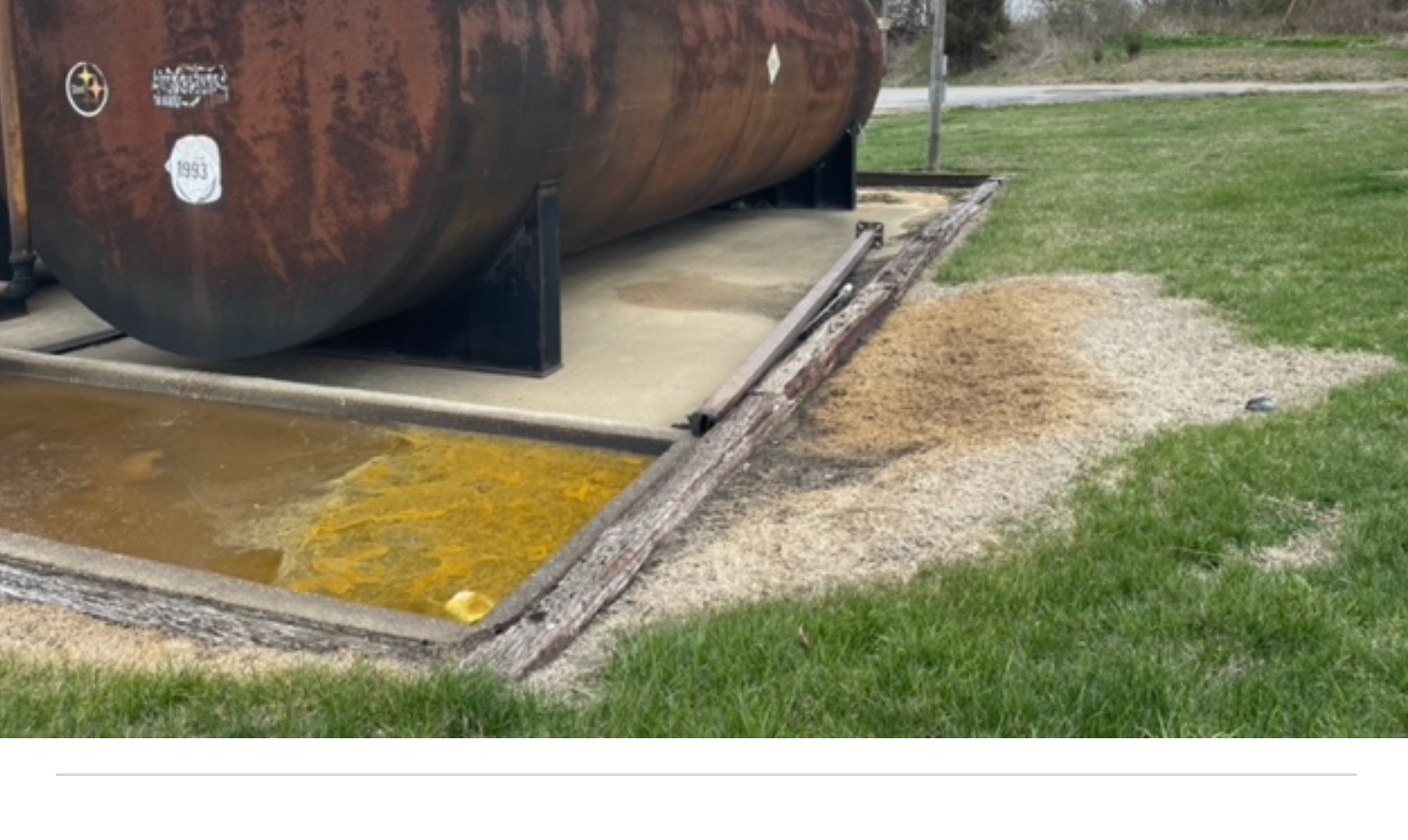


The stormwater community in Indiana is excited to make a difference in their surface water quality. A focus on performing an EFFECTIVE construction site inspection was performed on the second day for both training events. I'm both grateful and proud to be a part of the community of stormwater professionals caring for our watersheds!



Springtime BMP Maintenance

Stormwater managers, what's on your stormwater spring cleaning checklist? Now is the time to examine your stormwater systems and take action to correct any signs of neglect or damage caused by the accumulation of the dirt, debris, sand and salt from winter months. [Here](#) are some stormwater spring cleaning tips on what to look for and what actions to take to get your systems back in shape and functioning as they should!

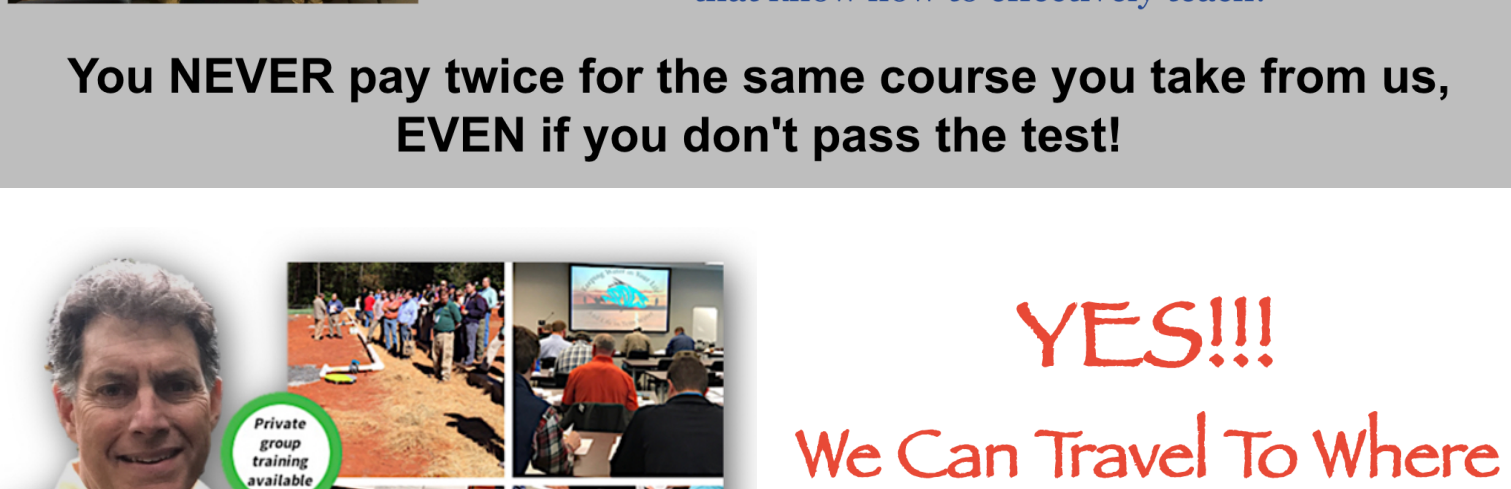


Quick Links

[Check Exam Results](#)

[Course Schedule](#)

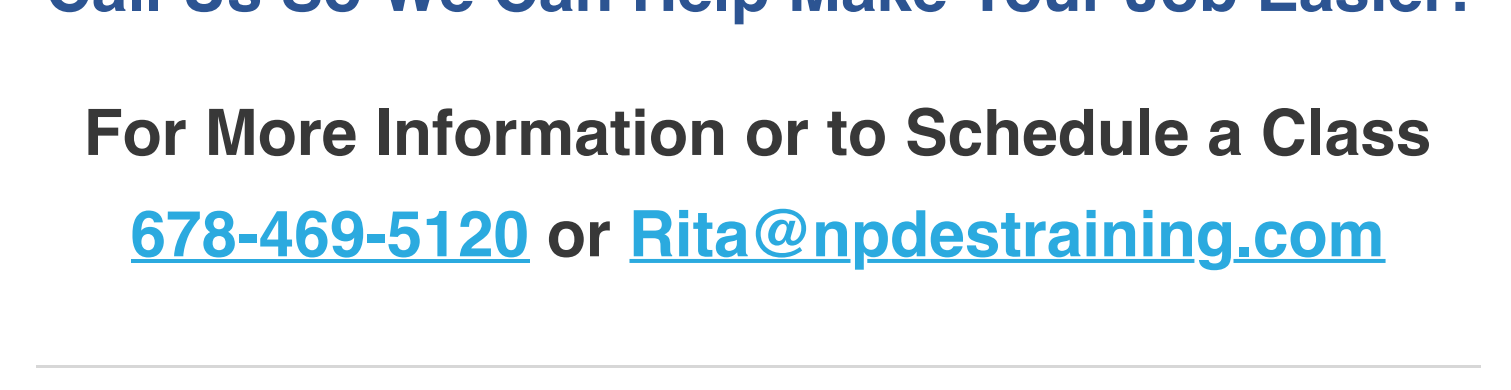
[Newsletter Archives](#)



WE GUARANTEE OUR TRAINING!

Our reputation is built on providing YOU the best stormwater education, taught by **EXPERIENCED INSTRUCTORS** that know how to effectively teach!

You NEVER pay twice for the same course you take from us, EVEN if you don't pass the test!



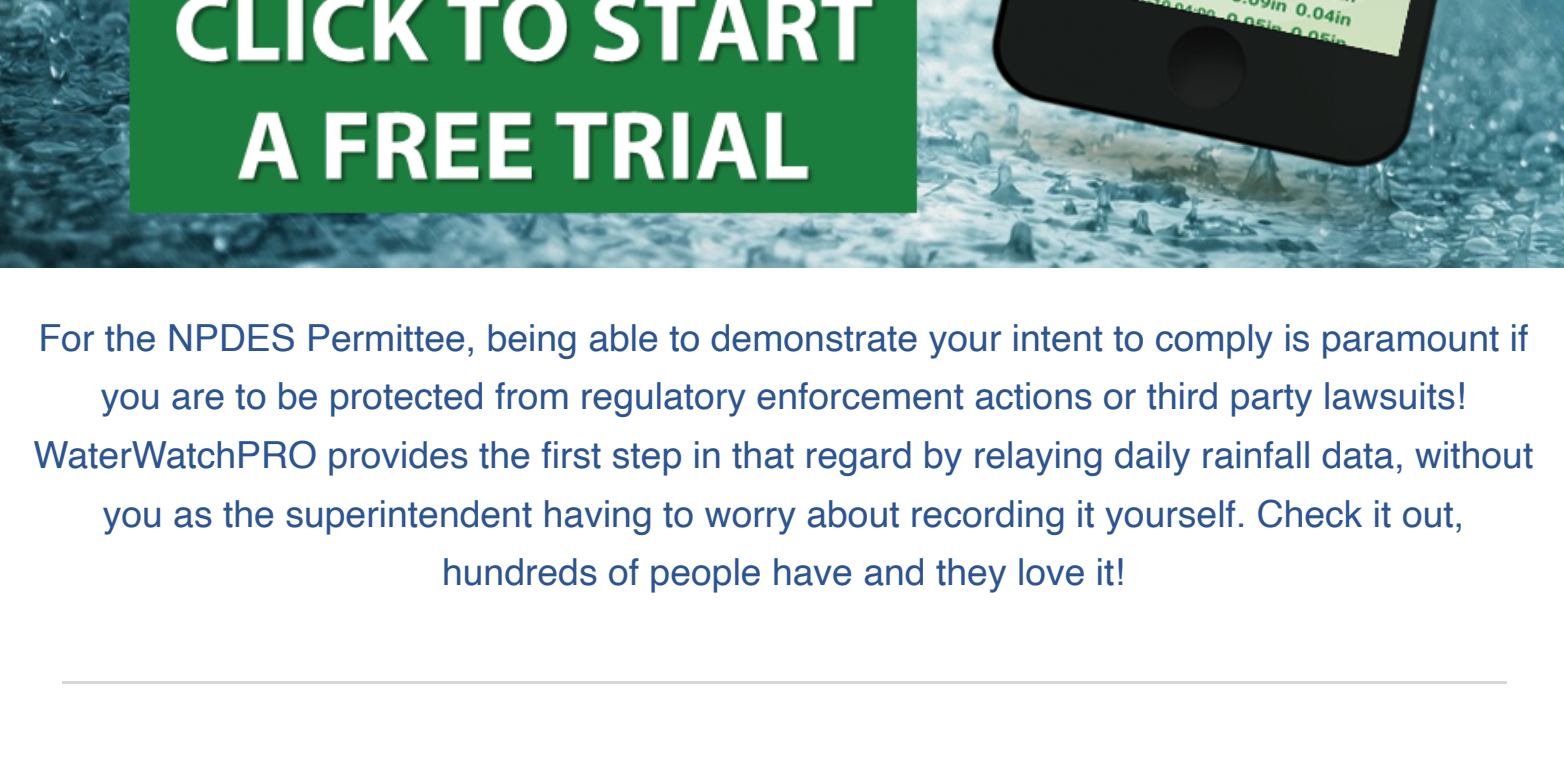
YES!!!

We Can Travel To Where You Work!

Call Us So We Can Help Make Your Job Easier!

For More Information or to Schedule a Class

[678-469-5120](tel:678-469-5120) or Rita@npdestraining.com



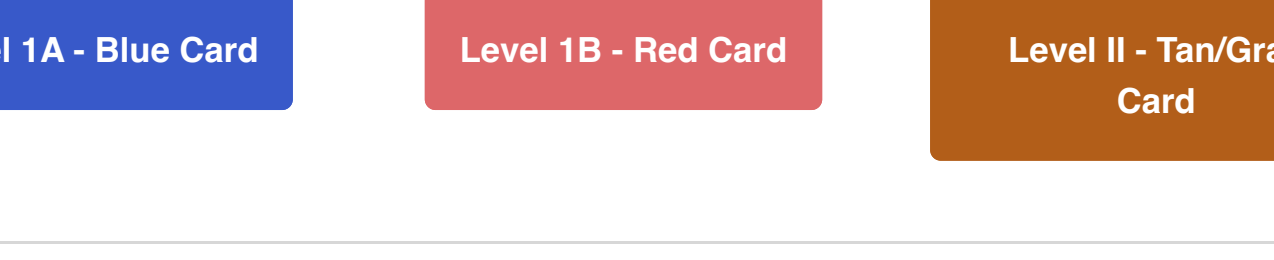
For the NPDES Permittee, being able to demonstrate your intent to comply is paramount if you are to be protected from regulatory enforcement actions or third party lawsuits! WaterWatchPRO provides the first step in that regard by relaying daily rainfall data, without you as the superintendent having to worry about recording it yourself. Check it out, hundreds of people have and they love it!

COURSES

GSWCC

GEORGIA EROSION & SEDIMENT CONTROL

INITIAL CERTIFICATION COURSES



Re-CERTIFICATION COURSES

ONLINE COURSES

GEOS, Site Inspections & State Waters

Trees & Construction, Site Inspections & State Waters

CLASSROOM COURSES

Level 1A, Level 1B or Level II

MS4CECI

MS4 Compliance & Enforcement Certified Inspector



Initial 2-Day Classroom/Field Course

Recertification 4-Hour Course

Recertification 4-Hour Course Online

Recertification 4-Hour Course Classroom

MS4CECI Course Information

One of our most popular courses, this 2-day seminar is developed and designed specifically for municipal separate storm sewer system (MS4) compliance and enforcement personnel, field inspectors, stormwater managers and consultants, with a focus on MS4 stormwater permit compliance and enforcement responsibilities.

An examination is conducted immediately following classroom instruction. Course attendees are required to achieve a minimum examination score of 70% for their 3-year MS4CECI Certificate.

The MS4CECI course was designed by federal, state and local regulatory personnel as well as stormwater consultants with over 100 years of combined experience in educating MS4 stormwater personnel to manage and perform stormwater inspections of municipal, commercial, industrial and construction activities. The 2-day seminar teaches federal and state stormwater laws as well as local ordinances, and provides instruction on how to perform outfall investigations, prioritize sub watersheds for inspections and properly comply with and enforce the various NPDES permits assigned for MS4s, construction sites and industrial facilities.

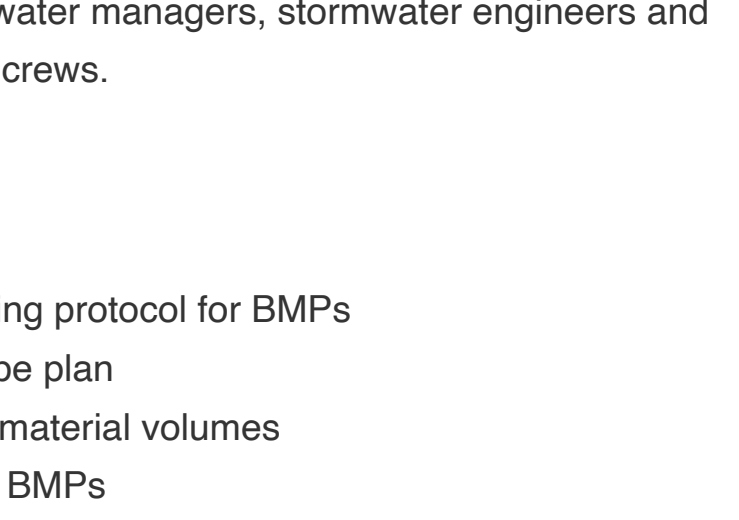


MS4GIT:

MS4 Green Infrastructure Technician



The MS4GIT Course is a 1-day training experience focusing on Green Infrastructure BMPs and their installation & maintenance. Attendees will learn how to identify and solve issues surrounding poor maintenance, as well as avoid GI failures entirely.



This course was designed especially for stormwater managers, stormwater engineers and consultants, MS4 Inspectors and maintenance crews.

Upon completion, trainees will have learned to:

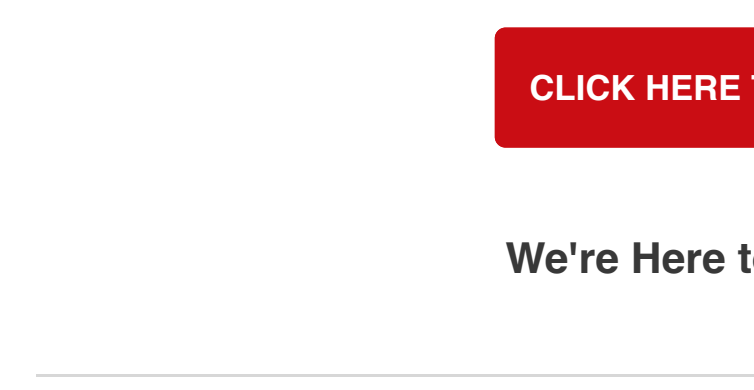
- Implement correct construction sequencing protocol for BMPs
- Understand how to read a BMP landscape plan
- Identify soil mixtures and calculate soil / material volumes
- Identify select appropriate plants for BMPs
- Understand maintenance requirements of BMPs
- Identify common problems and solutions for BMPs
- Understand how to implement a landscape maintenance plan
- Evaluate plant performance and how to replace failing plants

[Click Here to Register](#)

MS4 Stormwater Inspector

4-Hour Online Course

What is a Hot Spot or Highly Visible Pollutant Source (HVPS)? Once you see it causing an illicit discharge, how are you supposed to inspect one as compared to at a construction site or industrial facility?



This course will give you the confidence you need to properly perform a facility inspection. Believe it or not, it's actually fun to work with the compliance community in protecting our watersheds, and that's what this course will help you do!

Everyone agrees that we need to keep our watersheds clean and it's the MS4 Stormwater Inspector that makes all the difference in that regard!

[CLICK HERE](#)

for a Brief Video & Course Description

Call Rita at [678-469-5120](tel:678-469-5120)

or if you prefer you can email Rita@npdestraining.com

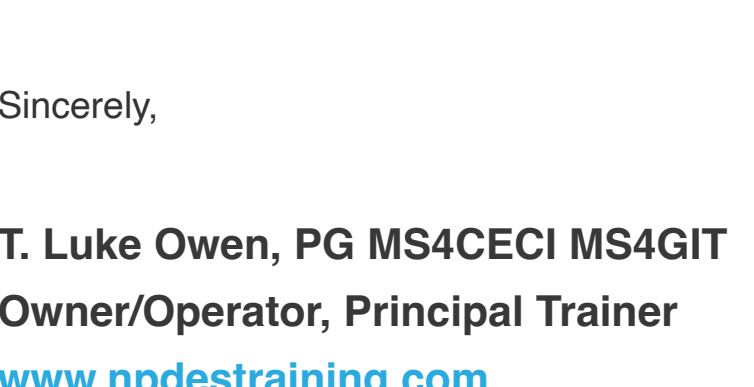
[CLICK HERE TO REGISTER](#)

We're Here to Serve You!

10% Off any course

[Claim Now](#)

We Must Demand that American Cities Comply with Their Own NPDES Permits!



How can a city government hold a general contractor or industrial operator accountable for NPDES compliance when they themselves are in major violation of their own permit requirements?

The message Los Angeles (see above) is sending their residents when they blow off common sense water quality do's and don'ts is inexcusable in America and part of the reason people are leaving Los Angeles. The city (with obvious tolerance from the State) is willingly violating its MS4 Permit by pressure washing human excrement, syringes and other pollutants directly down their storm drains. Los Angeles, Portland, Seattle and others are just another reminder of how important it is that we Americans demand their compliance with Clean Water Act NPDES rules & regulations! Every time you go fishing or jump in the lake to take a swim, be grateful for the our NPDES permitting program that makes it all possible IF polluters are made to comply. Respecting our neighbors downstream is what America is all about and it's compliance with NPDES Permits that helps us do that!

"We all need to view NPDES Permit compliance as an investment in our nation's future quality of life, so our children will also have an equally great place to live, swim, fish, boat and hunt tomorrow!" – T. Luke Owen

Sincerely,

T. Luke Owen, PG MS4CECI MS4GIT

Owner/Operator, Principal Trainer

www.npdestraining.com

tlowen@npdestraining.com

[Unsubscribe](#)