

[www.npdestraining.com](http://www.npdestraining.com)  
[www.erosiontraining.com](http://www.erosiontraining.com)  
[www.ms4training.com](http://www.ms4training.com)

What is ECHO and the NPDES Electronic Reporting Rule? **WHY are they SO IMPORTANT** for the Land Developer to know about it?

EPA is calling its Enforcement and Compliance History Online ([ECHO](https://echo.epa.gov/)) website "one of EPA's most important and popular resources." ECHO is a regularly updated database that lets *anyone* access detailed information regarding a company's compliance status, inspection and enforcement history, and permit and pollutant-discharge data at any specific regulated site.



ECHO can be used to display trends in compliance and enforcement data through dashboards, maps, and charts. Forthcoming regulations like the [NPDES Electronic Reporting Rule \(ERR\)](#) for stormwater discharge permits are expected to increase the scope of construction-site data that is uploaded to the ECHO system.

Some land developers are already using ECHO to analyze and benchmark themselves against other regulated facilities in their region. Similarly, construction firms can use ECHO to monitor compliance across their own jobsites/facilities. Project owners and investors may use ECHO to factor environmental performance into their decisions. Many in the business community are concerned that ECHO is a way for EPA to shift more of the enforcement burden to citizen groups, in light of the agency's shrinking budget.

THE Associated General Contractors of America (AGC) has suggested that contractors may want to consider assigning a representative to access and monitor what EPA is posting about their facilities.

AGC of America

In 2 Weeks NOVEMBER 3, 2016  
**SURFACE SKIMMER CLASS**

HOW is a Surface Skimmer (Sk) supposed to work? How do you install it? When is it NOT FEASIBLE to use a skimmer and use a retrofit (Rt) instead? Come **Join us** and learn in an outdoor setting with our mobile temporary sediment basin as we demonstrate and experiment with proven cost effective methods that make it simple to comply with your NPDES Permit.

**This 1/2 Day Course is worth 4 PDHs!**

This class gets better and BETTER!

[SIGN UP HERE](#) and get a **FREE 2016 FIELD MANUAL** with your registration!



## MS4 CECI COURSE



**UNPLUGGING A STORMDRAIN**  
**"He Sure Takes His Job Seriously!"**

Over 300 consultants, federal, state & local MS4s Inspectors from around the country have been trained to perform MS4 Inspections!

JOIN US FOR A CLASSROOM & FIELD EXPERIENCE that hundreds of MS4 Inspectors have said is the "Best Stormwater Course" they've ever attended!

[CLICK HERE to REGISTER](#)

[November 7th & 8th, 2016](#)

**WE GUARANTEE OUR TRAINING &  
DO NOT CHARGE FOR A RETEST**

**We are your partner for a strong America!**

Read reviews from former

**"Raving Fans"**

**We are here to Help!**

**678-469-5120**

**certification@npdestraining.com**

[CLICK HERE TO REGISTER](#)



**US EPA**

**CLEAN WATER ACT VIOLATIONS**

**IN THIS ISSUE**

[ELECTRONIC REPORTING!](#)

[WE GUARANTEE OUR  
TRAINING!](#)

[QUESTIONS & ANSWERS](#)

[6th EDITION GREENBOOK](#)

[The NEW GREEN BOOK and  
FIELD MANUAL](#)

[CONSERVATION CORNER](#)

[D C Rock & Gravel Fined](#)

[ONLINE COURSES](#)

[COMPLIANCE TOOL BOX](#)

[STORMWATER CONFERENCES](#)



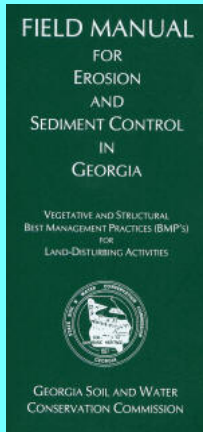
**Quick Links**

[CHECK EXAM RESULTS](#)

[COURSE SCHEDULE](#)

**BUY THE NEW 2016 FIELD  
MANUAL**

The NEW 2016 version of the  
FIELD MANUAL. It is NOT THE  
GREENBOOK.

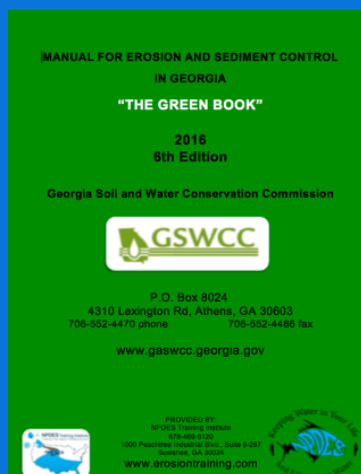


View our videos on 

**Buy Now**



**CLICK HERE FOR  
YOUR COPY OF THE  
2016 GREEN BOOK**



**OR**

# D.C. Rock and Gravel Facility settles Clean Water Act violations with EPA



**PHILADELPHIA, OCTOBER 5, 2016** -- The U.S. Environmental Protection Agency has entered into a settlement agreement with Recycled Aggregates, LLC and John Driggs Company, including a penalty of \$32,400, resolving alleged [Clean Water Act](#) violations at a rock and gravel processing facility located at 1721 S. Capitol St. SW in Washington, D.C. EPA alleged that these parties discharged [stormwater](#) runoff into the municipal separate storm sewer system (MS4) and the Anacostia River without a discharge permit as required by the Clean Water Act .

[more](#)

**RECERTIFICATION  
IN-CLASSROOM or ONLINE**  
**"FOR THE OUTDOORSMAN IN ALL OF US!"**

- > Convenient
- > Easy to Use
- > Available 24/7

[GEOLOGICONLINE.COM](http://GEOLOGICONLINE.COM)



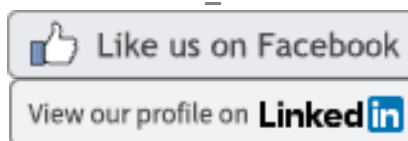
[Click Here for](#)

**ONLINE RECERTIFICATION TRAINING!**

**CLASSROOM COURSE SCHEDULE**

**SIGN UP FOR A FOR A COURSE**

**EROSIONTRAININGONLINE.COM**



**ASSOCIATED GENERAL CONTRACTORS**

DOWNLOAD A  
FREE COPY [here!](#)

AS OF JULY 1, 2016  
ONLY THE 2016  
EDITION GREENBOOK  
CAN BE USED in  
GEORGIA.

Proud Member of ...



The  
Weather  
Channel



## **GREATER ATLANTA HOME BUILDERS**

### **COMPLIANCE TOOL BOX**



**Local Government NPDES Enforcement & Plan Review Authority.**

**GREEN BOOK (Manual for E&SC in Georgia - New 2016)**

**GREEN BOOK Video Presentation**

**2013 NOI & NOT Forms**

**2013 FACT SHEET - NPDES General Permit for Construction (GA)**

**2013 FACT SHEET ADDENDUM - NPDES General Permit for Construction**

**WHO NEEDS TO BE CERTIFIED in GEORGIA - FACT SHEET**

**March 5, 2012 Memo for Projects Less than 1-Acre**

**NEW 2014 303d LIST (Georgia) - for use as of July, 2016**

**EPD GUIDANCE TO SWCC DISTRICTS FOR PLAN REVIEWS**

**CITY OF ATLANTA - Forms, Checklists & CAD Sample Plans**

**2009 MODEL ORDINANCE (Read Page 7, paragraph C)**

**BUILDING & RENOVATING A POND in GEORGIA**

**TMDL IMPLEMENTATION PLANS**

**STREAMBANK & SHORELINE RESTORATION in GEORGIA**

**GESA Exemption #8**

**BUFFER VARIANCE REQUIREMENTS FOR DAMS**



## MORE STORMWATER CONFERENCES & TRAINING EVENTS



[SOUTHEAST STORMWATER ASSOCIATION \(SESWA\)](#)  
(UPCOMING CONFERENCES)



[GEORGIA ASSOCIATION OF WATER PROFESSIONALS](#) (UPCOMING CONFERENCES)



[GEORGIA RURAL WATER ASSOCIATION \(GRWA\)](#)  
(UPCOMING CONFERENCES)



[INTERNATIONAL EROSION CONTROL ASSOCIATION](#)  
SE CHAPTER (UPCOMING CONFERENCES)

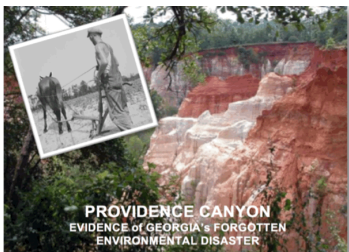


[WATER ENVIRONMENT FEDERATION](#) -  
WATERS WORTH IT! (UPCOMING CONFERENCES)



## HUMAN NATURE and CLEAN WATER

"Our population is tremendously r eliant on **state enforcement** and even more on quality local enforcement efforts to ensure our streams, rivers, lakes and coastal waters are clean. US EPA While "ENFORCEMENT" can mean "fines" or "Stop Work Orders", it shouldn't always be that way. When an MS4 Permittee (Cities, Counties, Military Bases and Universities) enforce the stormwater and state laws that govern land disturbing activities, it should be considered nothing more that



using common sense to protect our watersheds from potential impacts from stormwater. Good local enforcement can save a developer big bucks from possible 3rd party lawsuits! I've found most people agree that a **persons property value and physical health down stream is**

**just as important to that land owner, as profitability & quality of life is to the land developer up stream!**

**"There will always be.....**

**5% who will violate no matter what,**

**20% who will comply no matter what, and**

**75% who will comply only if their is local enforcement. are perceived as **non-arbitrary**".**

*"Improving the Efficiency and Effectiveness of Compliance Monitoring and Enforcement of Environmental Policies" -*

Cheryl Wasserman

**HERE's TO TIGHT LINES & GOOD TIMES  
in Clean Abundant Water!!!**

*Respecting our neighbors downstream is what America is all about and it's the NPDES permit that helps us do that! It's OUR CHILDREN that will be living through decisions we make today. NPDES is an investment into our nations future generations so they can also have an equally great place to live, swim, fish, boat, and hunt tomorrow!*

**Sincerely,**  
NPDES TRAINING INSTITUTE

T. Luke Owen, PG  
President

**WHAT MAKES AMERICA'S  
WATER QUALITY SO  
MUCH BETTER?**

[www.npdestraining.com](http://www.npdestraining.com)  
[www.ms4training.com](http://www.ms4training.com)  
[www.erosiontraining.com](http://www.erosiontraining.com)

[Luke@npdestraining.com](mailto:Luke@npdestraining.com)