



OCTOBER 2018 Newsletter

Water Volume & Sediment Pollution

"The Deadly Combination That Can't Be Ignored!"



www.NPDESTraining.com

www.ErosionTraining.com

www.MS4Training.com

DON'T FORGET!

"If you do, it's not going to be pretty!"

By now, most NPDES Permittees (and their consultants) have hopefully heard about the looming deadline to file the Notice of Intent (NOI) if your NPDES project (land disturbing activity) was operational prior to July 31, 2018. In Georgia, we are now in a brand new 5-year permit cycle, meaning it's going to be illegal to not have filed a new NOI, 90 days after the expiration of the old permit which expired on July 31, 2018.

Five years ago, when the old permit expired, NPDES Permittees were also given 90 days to file the new NOI, and not a whole lot of hoopla was given to it.

So you might be asking what makes this situation different.....and this is why.....PERMITTEE's ARE TRACKABLE now and are ALL required to file

certain documents (including NOI's) via the internet, meaning that anyone can see if the project under construction is in compliance! In other words, get used to it...if you're a land developer (ie Owner and/or Operator of a construction sites erosion plan) you have no choice but to file electronically and not via a mail carrier.

The option to refile is going to be taken down from the Georgia EPD Online System (GEOS) website at midnight, October 31st, so if you're a consultant or the like working for clients who may not be aware of this new requirement, don't horse around this time like you may have done last time (5 years ago).

WHY is all this happening?

The USEPA passed an "Electronic Reporting Rule" several years ago that required ALL STATES to require electronic reporting in one form or another. The Georgia Environmental Protection Division (EPD) reissued General NPDES Permits Nos. GAR100001, GAR100002 and GAR100003 on August 1, 2018, authorizing stormwater discharges from construction activities to the waters of the State of Georgia for a period of five years. All existing coverage under the 2013 NPDES permit expired on July 31, 2018. Coverage under the 2018 NPDES permits must be obtained through the **mandatory electronic submittal of a renewal Notice of Intent (NOI) through the Georgia EPD Online System (GEOS) for electronic permit applications.**

All projects previously covered by the 2013 NPDES Construction Permit that did not reach final stabilization as defined in the Permit and/or did not file a Notice of Termination (NOT) must renew their NOI for continued





Welcome to Georgia EPD Online System (GEOS) for Permitting, Compliance and Facility Information

Online services offer the convenience of obtaining environmental permits and submitting compliance reports online. It supports the following features:

- Establish a user account and manage all your submittals online;
- Apply environmental permits, certificates, licenses and other environmental issuances online;
- Submit environmental reports;
- Monitor processing status of your online submittals;
- Receive e-mail notifications on permitting results;
- Receive e-mail alerts for upcoming reporting obligations;
- Submit requests to revise permits or submit revised reports;
- Track historical versions of all submittals.

[Public Inquiry Portal: Search for Applications and Permits Submitted in GEOS](#)

ALERT: ALL INFORMATION SUBMITTED USING GEOS IS OPEN AND AVAILABLE TO THE PUBLIC. Information that a person claims is not subject to disclosure to the public ("Non-disclosure Claims") MUST be submitted to EPD in compliance with EPD's Procedures for Submitting Information Pursuant to a Claim That Information in the Submittal is Protected Under Georgia Law from Disclosure to the Public

- 1- Resubmittal of an updated Erosion and Sedimentation Control Plan (ES&PC Plan) that must meet the new permit requirements,
- 2- Repayment of Land Disturbance Fees, and
- 3- The project will subject to potential fines, etc. as a result of being in violation.

The following links contain videos and guidance documents to assist you in this setup:

- [GEOS NPDES Stormwater Construction Instructions for setting up GEOS RO Account.pdf](#)
- [GEOS NPDES Construction Stormwater Instructions for setting up GEOS Preparer Account.pdf](#)
- For a complete Guide to GEOS, [Click Here](#)

Note: Our courses have been updated to include this and much more. We are currently working with the state and plan on having our courses finalized soon!

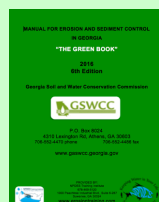
coverage under the 2018 permit using this online system. The 90 day grace period to get this accomplished will end on October 30, 2018. The main EPD webpage for the GEOS system can be found by [clicking here](#).

***PLEASE NOTE:** All sites that fail to renew coverage before the end of the grace period (Midnight - October 31st, 2018) will have to apply for new coverage under the 2018 NPDES Permit. The option for filing an NOI for renewal will be removed from the GEOS website at midnight-October 31st!

If your NOI's are not submitted by the deadline, the following will be required:



Clean Water Isn't Free Anymore!



GREENBOOK CORNER

The Manual for Erosion and Sediment Control in Georgia

Because of requests from you, our subscribers, we're launching the GREENBOOK CORNER, a discussion of specific BMPs of interest.

SpB - The SEEP BERM

The purpose of a Seep Berm needs to be understood, before they are placed on a stormwater pollution prevention plan (SWPPP).

A Seep Berm allows a 2 year, 24-hour storm to seep out while allowing larger flows to be diverted to a sediment storage area. In other words, Seep Berms are like a moat that surrounds the castle with a backdoor just in case they receive too much water. However, the castle in this case is the area of exposed soil which is in the designed SWPPP or in Georgia we call it the ES&PC (Erosion, Sedimentation & Pollution Control) Plan.

The nice thing about the Seep Berm is that it allows an exposed graded area, to be completely exposed without the fear of sediment filled stormwater discharges, leaving from an unintended exit points.

Some projects are better suited than others for Seep Berms. Erodibility of the soil and willingness to maintain are serious considerations before placing them on the plan. As a matter of fact, all BMPs need to be continually maintained. The issue is that some BMPs are more expensive and time consuming to install and maintain than others. That said, any BMP added to the plan should be *feasible* for the owner/operator. The short definition of *feasible* means "economically and technologically achievable"; a consideration worth its weight in gold, before the decision to add it to your arsenal of site BMPs.

Click on the link below to see what the Green Book says about the SpB.

[SpB SEEP BERM](#)

SpB

SEEP BERM

DEFINITION

A linear control device constructed as a diversion perpendicular to the direction of runoff to enhance dissipation and infiltration, while creating multiple sedimentation chambers with the employment of intermediate dikes.



IN THIS ISSUE

[The GREENBOOK Corner](#)

[6th EDITION GREENBOOK](#)

[The NEW GREEN BOOK and
FIELD MANUAL](#)

[MS4 CECI Course Registration](#)

[ONLINE COURSES](#)

[GSPE](#)

Quick Links

[CHECK EXAM RESULTS](#)

[COURSE SCHEDULE](#)

[BUY THE NEW 2016 FIELD
MANUAL](#)

[Download a Free Copy.](#)



View our videos on [YouTube](#)

Buy Now



[A CLICK HERE TO BUY A
2016 GREEN BOOK](#)

MS4CECI COURSES

MS4 Compliance & Enforcement Certified Inspector
The "OFFICIAL" MS4CECI Course

[CLICK HERE FOR MS4CECI ONLINE RECERTIFICATION](#)

FIELD STREAM SURVEY

OUTFALL INSPECTIONS

INDUSTRIAL FACILITY INSPECTIONS

CONSTRUCTION SITE INSPECTIONS

This course meets the MS4 NPDES Permit requirement for Training & Green Infrastructure

OCTOBER 2018

[ST. JOHN, INDIANA](#)
[October 29-30](#)

NOVEMBER 2018

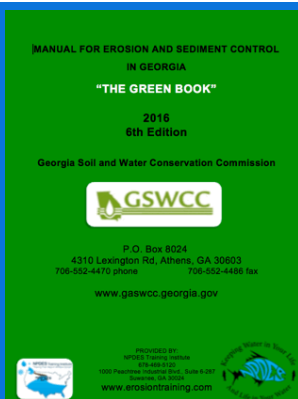
[MARIETTA, GEORGIA](#)
[November 2nd \(Renewal\)](#)

DECEMBER 2018

[MARIETTA, GEORGIA](#)
[December 6-7](#)

FEBRUARY 2019

[COLORADO SPRINGS, COLORADO](#)
[February 6-7](#)



**"THE BEST
STORMWATER
CLASS I'VE EVER
ATTENDED!"**



**"The Instructor was
knowledgeable and experienced with a lot of examples"**

**"Very practical, I've learned & received more information for my job than any
other class I've ever taken, Thank You!"**

OR
DOWNLOAD A
FREE COPY [here!](#)

AS OF JULY 1, 2016
ONLY THE 2016
EDITION GREENBOOK
CAN BE USED in
GEORGIA.

Proud Member of ...
**Greater
Atlanta
Home Builders
Association**



**American Sports
Fishing Association**

CALL RITA @

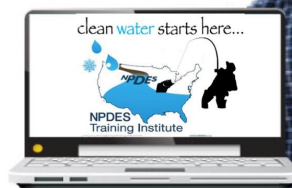
678-469-5120 for help registering!

www.MS4stormwatertraining.com

**RECERTIFICATION
IN-CLASSROOM or ONLINE
"FOR THE OUTDOORSMAN IN ALL OF US!"**

- > Convenient
- > Easy to Use
- > Available 24/7

GEOLOGICONLINE.COM

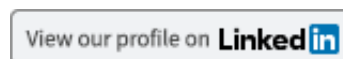
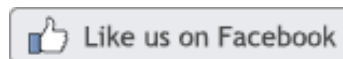


[Click Here for](#)

ONLINE RECERTIFICATION TRAINING
CLASSROOM COURSE SCHEDULE

REGISTER FOR A COURSE

EROSIONTRAININGONLINE.COM



Read About How ASFA Works To Help The American Angler



The
Weather
Channel



smart
WATERSHEDS
FOR CLEAN RIVERS AND STREAMS



AGC
Georgia
SUPPLIER/SERVICE PROVIDER

ASSOCIATED GENERAL CONTRACTORS

SAVE 10%



ALL ONLINE &
CLASSROOM
COURSES

USE
DISCOUNT COUPON
CODE
"FALL2018"

*Register for
a Course*

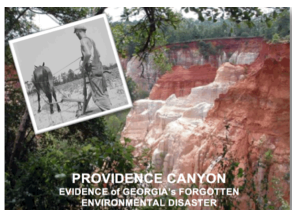
Offer Expires 11/15/
18



**NEED HELP with
SEDIMENT BASINS?
CALL JIM SPOTTS**

770-216-9514

southeastenvironmentalconsultants.com



COMPLIANCE TOOL BOX



Local Government NPDES Enforcement & Plan Review Authority

GREEN BOOK (Manual for E&SC in Georgia - New 2016)

GREEN BOOK Video Presentation

WHO NEEDS TO BE CERTIFIED in GEORGIA - FACT SHEET

March 5, 2012 Memo for Projects Less than 1-Acre

NEW 2014 303d LIST (Georgia) - for use as of July, 2016

EPD GUIDANCE TO SWCC DISTRICTS FOR PLAN REVIEWS

CITY OF ATLANTA - Green Infrastructure Information, forms, etc.

BUILDING & RENOVATING A POND in GEORGIA

TMDL IMPLEMENTATION PLANS

STREAMBANK & SHORELINE RESTORATION in GEORGIA

GESA Exemption #8

BUFFER VARIANCE REQUIREMENTS FOR DAMS

INVITATION TO JOIN THE GEORGIA SOCIETY OF PROFESSIONAL ENGINEERS

CLICK HERE to learn more about GSPE.

Betty Jean Jordan, PE
Executive Director
Georgia Society of Professional Engineers

165 Courtland Street, Suite A 235
Atlanta, GA 30303
(404) 840-2542
<https://www.facebook.com/gspeorg/>

NSPE-GA™ GEORGIA SOCIETY OF
PROFESSIONAL ENGINEERS



**We are proud to have Betty Jean as one of our
Stormwater Trainers!**

**Click here to register for your Level II Certification or
Recertification Course for designers and reviewers!**

***HERE's TO TIGHT LINES & GOOD TIMES
in Clean Abundant Water!!!***

We must ALWAYS remember that Freedom and Liberty are not free. People have sacrificed their lives and are sacrificing their lives today to give us what we so often take for granted!



Similarly, respecting our neighbors downstream and the critters that are trying to live in our urban watersheds is more important now than ever! Respecting those downstream from our actions is what America is all about, and it's compliance with NPDES Permits that prove our respect.



I thought I understood pure joy when I held a beautiful fish;

BUT NOW, holding my new granddaughter, I've truly found my happy place!

"It's OUR CHILDREN (& GRAND CHILDREN) that will be living through decisions we make today. Proper design, installation and maintenance of your SWPPP has never been more important!"



NPDES  TRAINING INSTITUTE

T. Luke Owen, PG MS4CECI
President, Principal Consultant

www.npdestraining.com
www.ms4training.com
tlowen@npdestraining.com
678-469-5120