

DID YOU KNOW?
The 6th Ed. GREEN BOOK



UPDATE



IN THIS ISSUE

[FIELD MANUAL](#)

[NEW GREENBOOK](#)

[S.T.R.E.A.M SEMINAR](#)

[ONLINE COURSES](#)

[UPCOMING EVENTS!](#)

Quick Links

[CHECK EXAM RESULTS](#)

[COURSE SCHEDULE](#)

[NEWSLETTER
ARCHIVES](#)

CLICK HERE TO PURCHASE
 THE FIELD MANUAL

Buy Now



NOTE: The 2002 is version
 of the FIELD MANUAL is the
 only one. It is NOT THE
 GREENBOOK.

What You Don't Know About Georgia's New 6th Edition Green Book

BACKGROUND

by T. Luke Owen, PG

After years of rigorous testing and analysis of best management practices (BMPs) through a reputable 3rd party testing facility, funding from the United States Environmental Protection Agency (USEPA), and program oversight by the Georgia Soil and Water Conservation Commission (GSWCC) and Technical Advisory Committee (TAC), the new 6th Edition Erosion and Sediment Control (GA E&SC) Manual became official on January 1, 2014.

The TAC was chaired by nationally recognized expert Dr. Britt Faucette, Ph.D., CPESC, LEED AP and is composed of a carefully selected group of Certified Professionals in Erosion and Sediment Control (CPESC), Professional Engineers (PE), and representatives from the Georgia Department of Transportation (GDOT), GSWCC, US Department of Agriculture Natural Resource Conservation Service (USDA-NRCS), and the Georgia



Environmental Protection Division (GAEPD). The 6th Edition E&SC Manual replaced the older 5th Edition E&SC Manual, published in 2000.

On February 21, 2014, due to a few stakeholder comments presented after the close of the official public comment period, the GSWCC State Board voted to reopen the 6th Edition E&SC Manual and testing procedures for public comment.

On July 30th, 2014 a Georgia State Representative (Stakeholder Member) wrote a letter to the GSWCC requesting that they disregard the 6th Edition GA E&SC Manual and return to the 5th Edition. On August 2, 2014, Dr. Faucette responded to Stakeholder Member with the following Letter of Concern.

FIELD MANUAL
FOR
EROSION
AND
SEDIMENT CONTROL
IN
GEORGIA

VEGETATIVE AND STRUCTURAL
BEST MANAGEMENT PRACTICES (BMPs)
FOR
LAND-DISTURBING ACTIVITIES



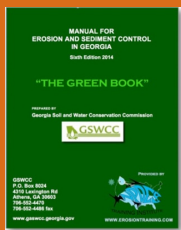
GEORGIA SOIL AND WATER
CONSERVATION COMMISSION

View our videos on **YouTube**

Buy Now

VISA MASTERCARD AMERICAN EXPRESS DISCOVER

TO ORDER YOUR HARD COPY
OF THE NEW
BIG GREENBOOK!!



PLEASE NOTE: THIS IS
NOT THE FIELD MANUAL!



LETTER OF CONCERN

by Dr. Britt Faucette, Ph.D., CPESC, LEED AP

Hello Stakeholder Member,

In an email sent by you on July 30, you requested the Georgia Soil and Water Conservation Commission (GSWCC) to disregard the 6th Edition of the Georgia Erosion and Sediment Control Manual (GA E&SC) and return to the 5th Edition.

As part of the 6th Edition, the GSWCC obtained scientific data through research conducted by a reputable 3rd party, funded by the US Environmental Protection Agency (US EPA), that showed the difference in performance between the highest performing sediment control barriers and the lowest performing sediment control barriers, allowed in the 5th edition, equates to a difference of nearly 1 ton per acre of sediment discharged from land disturbing activities. Considering the number of acres of land disturbance in the state of Georgia (GA) in a given year,

under the Construction General Permit and required under NPDES Phase 2 of the US Clean Water Act, this can equate to the allowance of thousands of tons of sediment released into GA Waters annually. Given the mandate of the GSWCC to protect and improve the quality of state waters in GA, the Stakeholder Member is explicitly requesting the GSWCC to ignore its own mandate and knowingly allow the contribution and potential release of thousands of tons of sediment into GA water bodies, annually, by ignoring this information and returning to the 5th Edition of GA E&SC Manual. It should be noted that the 6th Edition will help to prevent this from occurring and will help

to recognize the use of better performing sediment control practices and technologies, which include silt fences. Of the 13 sediment control barriers that were scientifically researched for their performance in sediment removal, the top 4 performing products/practices were silt fence products. It is important to note the 6th Edition continues to support and promote the use of silt fence products. Simultaneously, it also allows a pathway for other, non-silt fence products and innovative technologies to be used. I believe all interested parties would agree that competition in the market place is a good thing and should be encouraged.



These sediment control barriers include a variety of technologies and best management practices already approved by the US EPA National Pollutant Discharge Elimination

System (NPDES) National List of Best Management Practices (BMPs), *(it should be noted that the State of Georgia has just renewed its NPDES Permit from the US EPA)* as well as by the USDA Natural Resource Conservation Service (NRCS), the US Army Corp of Engineers, and AASHTO. As an example, see links below for US EPA and NRCS approvals for compost filter sock and check dam BMPs. In addition, this class of sediment control barriers (often referred to in the industry as sediment retention fiber rolls) are manufactured by most of the largest E&SC product manufactures in the US, are recognized by the largest industry organization in the US, the International Erosion Control Association (IECA), and have already been approved by nearly every other state environmental regulatory agency in the country.

<http://water.epa.gov/polwaste/npdes/swbmp/Compost-Filter-Socks.cfm>



FISH WITH KIDS!

http://www.nrcs.usda.gov/Internet/FSE_DOCUMENTS/stelprdb1048852.pdf

<http://water.epa.gov/polwaste/npdes/swbmp/Check-Dams.cfm>

The implementation of performance testing and standards for BMPs is a practice that is actively supported by leading industry organizations, including the [IECA](#), the [Erosion Control Technology Council \(ECTC\)](#), the [American Association of State Highway Transportation Officials \(AASHTO\)](#) National Transportation Product Evaluation Program, and the [Water Environment Federation \(WEF\)](#), as well as a growing number of state agencies. Providing standardized performance testing and benchmarks also allows the engineering and design community to know which BMPs perform well and which do not, thereby helping them make informed decisions to reduce overall risk on their projects and help safe guard land owners from non-compliance with the Federal Clean Water Act.



The P Factor (Support Practice Factor), is part of both the Universal Soil Loss Equation (USLE) and Revised Universal Soil Loss Equation (RUSLE), which were developed by the USDA to predict and determine soil erosion on land disturbing activities. This method has been used for over 50 years. The test method used in the 6th Edition is modeled after the USDA methodology that was used to create and develop the USLE and all 5 factors used in the USLE, including the P Factor, which is simply the sediment control performance of a device or practice in comparison to a bare soil. This method and similar test methods have been used by the erosion control industry, engineers & designers, and the agricultural industry successfully for many years.



After decades of pressure from all parties with an interest in protecting and improving the quality of state waters in GA, including the E&SC industry, engineers, developers, and environmental organizations, the GSWCC has finally developed a fair, equitable, and scientific way to evaluate and promote practices and

products that will help significantly in the effort to protect and improve the state waters of GA, something all of GA's citizens and industries have a profound interest in supporting.

Best Regards,

Dr. Britt Faucette, Ph.D., CPESC, LEED AP
Director of Research & Technical Services
Filtrexx International
244 Third Ave
Decatur, GA 30030

Global Corporate Headquarters:
Filtrexx International
35481 Grafton Eastern Rd
Grafton, OH 44044

For a brief auditory presentation about the 6th Edition Green Book,
[CLICK HERE](#).

OCTOBER 22, 2014
TIME TO REGISTER for this GREAT EVENT!



***WONDERING ABOUT ONLINE RENEWAL
INSTEAD OF CLASSROOM?***

**[CLICK HERE](#) for a Video Demonstration to
show you how easy it is!**



ONLINE RECERTIFICATION TRAINING!

CLASSROOM COURSE SCHEDULE

SIGN UP FOR A COURSE

EROSIONTRAININGONLINE.COM



Like us on Facebook

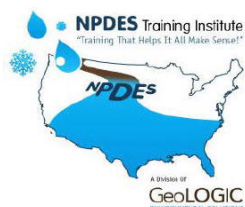
View our profile on **LinkedIn**



PROUD TO BE ON AGC's NATIONAL ENVIRONMENTAL STEERING COMMITTEE as well as their preferred STORMWATER TRAINING PROVIDER IN GEORGIA!



MORE STORMWATER CONFERENCES & TRAINING EVENTS



S.T.R.E.A.M. - City of Griffin & **NPDES TRAINING INSTITUTE** have partnered to provide Georgia's most popular Annual Stormwater & Erosion/Sedimentation Field Seminar on OCTOBER 22nd!



SOUTHEAST STORMWATER ASSOCIATION
(UPCOMING CONFERENCES)



GEORGIA ASSOCIATION OF WATER PROFESSIONALS
(UPCOMING CONFERENCES)

GRWA
(UPCOMING CONFERENCES)





[WEF](#) - WATERS WORTH IT!



[IECA SE Chapter](#)

UPCOMING CONFERENCE AUGUST-2014

MS4 CECI

Compliance & Enforcement Certified Inspector

Location: AGC of America, Georgia Chapter, Marietta

Date: August 13, 2014



"Thank you for providing this stormwater certification. The videos were excellent. The whole course really helped me understand the importance of the MS4 program!"

Officials from US EPA & GA EPD speak at this certification

LOCATION: Marietta, Georgia

DATE: August 13, 2014

[MS4 CECI Training Event](#)

The June MS4CECI training was AWESOME! (Food and snacks were great too) - all in all, a GREAT day! Course evaluations are always extremely positive! If you would like to learn more about how to effectively perform your responsibilities in the MS4 program, get certified as an MS4 Compliance and Enforcement Certified Inspector (MS4 CECI) at our next event on **August 13th, 2014!** You'll be glad you did!

The US EPA and Georgia EPD have committed to giving us ongoing updates in their talks at all of our upcoming seminars! The next MS4CECI seminar is on **August 13th**, where you too can become MS4CECI certified!

Seating limited to 20 attendees, come and listen as federal and state regulators speak about their role in the NPDES MS4, industrial, construction and post construction stormwater permit program. A role intended to assist you, the MS4 Compliance and enforcement Certified Inspector.

[Click Here for More information](#)





[SIGN UP NOW](#)

We're Almost Full!

RESERVE YOUR PLACE TODAY!

Hosted by the NPDES Training Institute, you won't find a NPDES certification course with more useful information than the MS4 CECI seminar ANYWHERE, or your money back!

Municipalities and private consultants alike love the MS4 CECI training!

"The videos with equipment demonstrations really helped make it practical"

The EPA and EPD discussions made the course practical and helped me understand how to properly regulate water quality problems in my MS4"

Great training! I feel like I know what to do now with my inspections, both for illicit discharges and construction sites."

"I liked the interaction with the instructor, updated information and all the new resources given out."



Metropolitan North
Georgia Water Planning
District



"The instructor was patient and really did a good job of answering questions"

"Excellent Course! Video's and Interaction with Instructor!"



On top of all the other material you receive, after passing your exam, you will receive a Certificate of Completion worth 8 CEUs and a MS4 CECI photo ID card.

Call us at 678-469-5120 and speak with our helpful staff and/or email us at Needinfo@MS4training.com

*HERE's TO TIGHT LINES & GOOD TIMES
in Clean Abundant Water!!!*



Let's respect our neighbors downstream!

It's important that we sacrifice a little today to give our kids an equally great place to live, swim, fish, and hunt tomorrow! There is a lot happening with water regulations that

affect a diverse community of public and private entities. If you have areas of interest that you would like included in this newsletter, please contact us at 678-469-5120.

Sincerely,
NPDES 


T. Luke Owen, PG
President/Principal Trainer and Consultant
www.npdestraining.com
www.ms4training.com
www.erosiontraining.com
Luke@npdestraining.com



