



IN THIS ISSUE

[FIELD MANUAL](#)

[NEW GREENBOOK](#)

[S.T.R.E.A.M SEMINAR](#)

[ONLINE COURSES](#)

[TOOL BOX - NOIs, NOTs & PERMITS](#)

[UPCOMING EVENTS!](#)

Quick Links

[CHECK EXAM RESULTS](#)

[COURSE SCHEDULE](#)

[NEWSLETTER ARCHIVES](#)

CLICK HERE TO PURCHASE THE FIELD MANUAL

Buy Now



NOTE: The 2002 is version of the FIELD MANUAL is the only one. It is NOT THE GREENBOOK.

by T. Luke Owen, NPDES Training Institute



Ditches are getting some special attention by the USEPA, and so are the municipal separate storm sewer systems (MS4s - see article below) that have millions of ditches in them from around the country. So what is it we need to know about a ditch and it's impact to the water quality of a river, lake or ocean that receives

the water from it? Is it over kill to focus attention on a ditch and it's potential contribution of pollution to a lake or ocean?

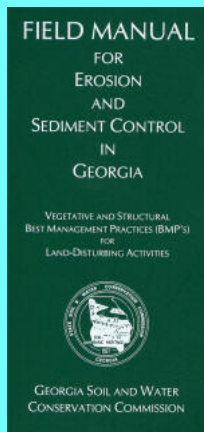
Let's briefly discuss some **indisputable facts about a DITCH**. Did you know ditches were already defined for years in the Clean Water Act?

It's just that little was done to regulate them as conduits of water pollution to downstream receptors. How they are going to be managed which will probably surprise you in the article below is where the controversy comes in.

A) When rain hits the ground (stormwater), it flows down hill and often **finds a ditch** after it's picked up dirt, goose poop, dog poop, oil, fertilizers, insecticides, etc., then flows through and into a pond, lake or ocean **through a ditch**.



B) When rain hits the ground in a urban setting it doesn't readily soak into the ground and usually **runs down hill picking up volume & velocity** because of impervious hard surfaces (concrete, asphalt, buildings, etc.). This causes higher volumes of pollution to be carried along the ground with the stormwater until it has no place further to go, which is normally a lake or the ocean.

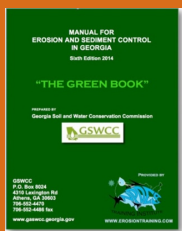


View our videos on 

Buy Now



TO ORDER YOUR HARD COPY
OF THE NEW
BIG GREENBOOK!!



PLEASE NOTE: THIS IS
NOT THE FIELD MANUAL!



C) When rain water runs through a ditch, it often **erodes the ditch** and carries extra sediment and pollutants into the local lake or ocean. Ditches are conduits that carry pollution downstream to people that live near the bottom of the watershed.

D) American Sealcoat, LLC was recently fined \$10 Million for intentionally funneling oil based pollution from their operations outfall and into the Chattahoochee River **through a ditch**. It's usually private citizen reports and complaints that generate water quality



ENVIRO Alleged Chattahoochee polluter slapped with \$10 million fine
Posted By [Maggie Lee](#) on Wed, Aug 19, 2015 at 12:20 PM



The Chattahoochee-bound ooze that cost \$10 million in fines

protection laws and their enforcement. This is why the Clean Water Act was amended in 1972 which stepped up legal accountability to the discharger for polluting our nations rivers. The Chattahoochee River is one of many rivers that funneled huge volumes of sewage

and industrial waste downstream from Atlanta to LaGrange and other small towns who had little ability to fight it. It still happens due to the nature of the expense of separating stormwater and sewer pipes, but on a much smaller scale. Sewage and industrial discharges around the world make their way **through ditches** that spread disease, make people deathly sick, and cause massive fish kills.

When you look at the purpose a ditch, in that it often funnels polluted water downstream and away from it's source in concentrated flow fashion. The question for our country should not be "Are ditches significant contributors to impaired water quality in US watersheds today?", but rather...."Just how should private industry and public regulatory officials **WORK TOGETHER** to effectively regulate them so it doesn't break the bank of companies responsible for preventing pollution from getting into our nations waters!" Remember, it takes a lot of dedicated money to pay for environmental protection, just look at Indonesia as the poster child for not protecting it's water quality.



WATER QUALITY and MS4s

A Birds Eye View Says It All

Last month I flew over Los Angeles (a Large MS4 Operator) and this is what I saw.....



We ALL need to share what Municipal Separate Storm Sewer Systems (MS4s) are, AND how vital the NPDES

permitting program is to our country's quality of life!

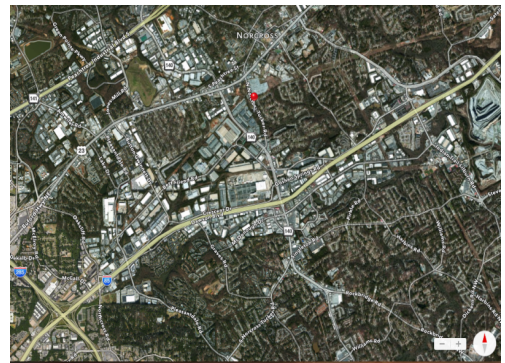
USEPA Steps Up Accountability for MS4 Permittees



On September 14, 2015 the Ninth Circuit **approved** a settlement between EPA and environmentalists that **requires EPA to propose by Dec. 17, 2015, revisions to its Clean Water Act (NPDES) general permit program for small MS4s to make cities more accountable** for reducing

stormwater pollution going to "waters of the U.S." This could force cities to further restrict runoff from construction sites and developed properties within their limits.

KEEP IN MIND, that many cities already have ordinances that go above and beyond the federal rules for construction site runoff and developed properties. Always check your local ordinances before beginning a construction project or an industrial operation!

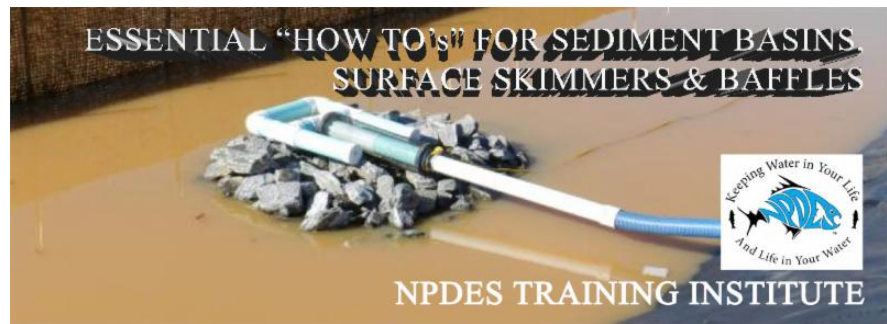


FISH WITH KIDS!

MONDAY, OCTOBER 26, 2015

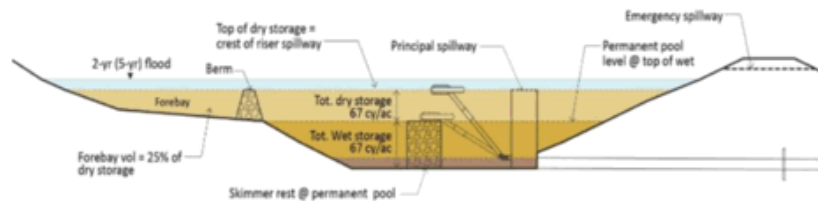
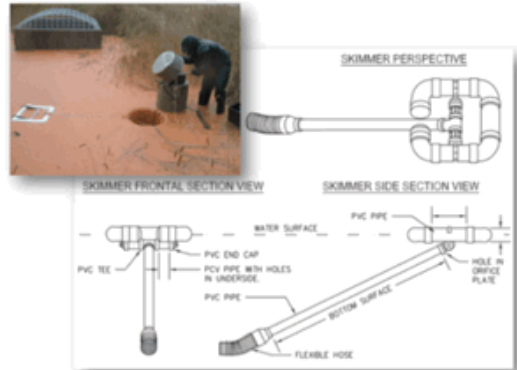
Also **QUALIFIES** for
GSWCC 1A, 1B & II RECERTIFICATION

REGISTRATION Near Closing!



If you need some clarity when it comes to sediment basin design, installation and maintenance of surface skimmers and baffles, this class will cover everything you **need** to know!

BONUS: A certificate of completion will be provided for each attendee that can be used to fulfill your GSWCC re-certification as well!



Answers to questions covered in the class will include:

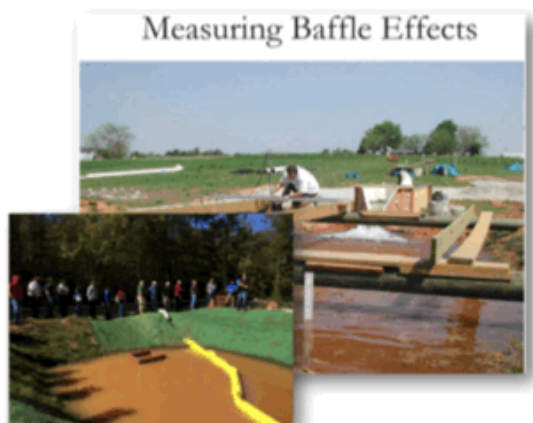
- 1) What types of Surface skimming (Sk) devices can I legally install?
- 2) How do I connect the skimmer to the outlet of a temporary basin?
- 3) What kind of baffle designs will work best in various situations?
- 4) Are there resources available to design and construct one myself so I can save money?
- 5) Can I use the **5th Edition Greenbook** instead of the **6th Edition** and not worry about installing a surface skimmer device?

Who Should Attend:

Contractors, Design Professionals, Engineers, Consultants, E&S Installation & Maintenance personnel, Landscape Architects, Equipment operators, etc.

Participants will learn:

- Sediment basins and the control devices (skimmers and baffles) installed for water quality.
- Regulatory changes in sediment basin design and installation
- New required components of sediment basins, including best practices for design, installation and maintenance.
- Criteria to inspect and maintain sediment basin BMPs and components for compliance with project permits.



SIGN UP BY [CLICKING HERE](#) or call Rita at 678-469-5120



WONDERING ABOUT ONLINE RENEWAL INSTEAD OF CLASSROOM?

[CLICK HERE for a
QUICK TUTORIAL VIDEO](#)



**LEVEL 1A, LEVEL 1B and LEVEL II
ONLINE RECERTIFICATION!**

[CLASSROOM COURSE SCHEDULE](#)

[SIGN UP FOR A COURSE](#)

EROSIONTRAININGONLINE.COM



Like us on Facebook

View our profile on **LinkedIn**



**PROUD TO BE ON AGC's NATIONAL
ENVIRONMENTAL STEERING COMMITTEE**

"Waters of the US" LEGAL CHALLENGE UPDATE

Multiple states have filed suit against EPA and the Corps challenging the rule, claiming the new WOTUS definition is an "unconstitutional and impermissible expansion of federal power over the states and



their citizens and property owners." Numerous industry groups have also teamed up to challenge the rule in various federal district and appellate courts.



[Other lawsuits like the one above](#), one by a farmer are also making into the media.

On July 28, the U.S. Judicial Panel on Multidistrict Litigation (JPMDL) issued an **order to merge all of the lawsuits** over the Waters of the US (WOTUS) rule that have been filed in various courts of appeal, holding that the United States Court of Appeals for the Sixth Circuit will hear the consolidated suits. The JPMDL scheduled a hearing on October 2, 2015, on DOJ's motion to consolidate ten challenges to the WOTUS rule from eight district courts.

The REAL STORY Behind regulating DITCHES in the new WOTUS rule may not be as bad as the media wants us to think it is!

THIS IS THE DEAL.....

*According to the USEPA and Army Corp of Engineers (ACOE) under the new WOTUS definition, if you factor in the new ditch exclusions that cover both ephemeral and intermittent ditches, **the final rule actually reduces the universe of jurisdictional ditches** - in comparison to the 2008 Rapanos guidance (i.e., pre-rule).*



*Contractors may find that ACOE Corps field staff are more consistently finding that they **DO NOT** have jurisdiction over intermittent ditches - whereas in the past those intermittent ditches may have been more closely scrutinized on a case-by-case analysis as a potential tributary. Even in a situation where the ditch exclusions **DO NOT** apply, the*



permittee may still need to consider whether the maintenance activity in the ditch is exempt.

COMPLIANCE TOOL BOX



[GREEN BOOK \(Manual for E&SC in Georgia - New 2014\)](#)

[GREEN BOOK Video Presentation](#)

[GREEN BOOK Update Presentation Free Download](#)

[GREEN BOOK Transition Period Guidance \(NOW CANCELLED\)](#)

[2013 NOI & NOT Forms](#)

[2013 FACT SHEET - NPDES General Permit for Construction \(GA\)](#)

[2013 FACT SHEET ADDENDUM - NPDES General Permit for Construction](#)

[2013 GAR100001 - NPDES GENERAL PERMIT - STAND ALONE](#)

[2013 GAR100002 - NPDES GENERAL PERMIT - INFRASTRUCTURE](#)

[2013 GAR100003 - NPDES GENERAL PERMIT - COMMON DEVELOPMENT](#)

[WHO NEEDS TO BE CERTIFIED in GEORGIA - FACT SHEET](#)

[March 5, 2012 Memo for Projects Less than 1-Acre](#)

[2012 303d LIST - GEORGIA](#)

[2007 EPD GUIDANCE TO SWCC DISTRICTS FOR PLAN REVIEWS](#)

[CITY OF ATLANTA - Forms, Checklists & CAD Sample Plans](#)

[2009 MODEL ORDINANCE \(Read Page 7, paragraph C\)](#)

[BUILDING & RENOVATING A POND in GEORGIA](#)

[CONCRETE WASHOUT PROCEDURES](#)

[STATE WATERS \(CCouch Ltr 2004\)](#)

[LOCAL ISSUING AUTHORITIES - NEW FEB 2012 List](#)

[ALTERNATIVE BMP GUIDANCE DOC](#)

[TMDL IMPLEMENTATION PLANS](#)

[STREAMBANK & SHORELINE RESTORATION in GEORGIA](#)

[GESA Exemption #8](#)

[BUFFER VARIANCE REQUIREMENTS FOR DAMS](#)





ESSENTIAL "How To's" for SEDIMENT BASINS NPDES TRAINING

INSTITUTE Due to POPULAR DEMAND, we are offering another Sediment Basin

course on October 28th, which has also been approved for recertification credits for the GSWCC program.



LIMITED SEATING
[CLICK HERE TO REGISTER](#)



SOUTHEAST STORMWATER ASSOCIATION (UPCOMING CONFERENCES)



GAWP UPCOMING CONFERENCES



GRWA UPCOMING CONFERENCES



WEF - WATERS WORTH IT!



IECA SE Chapter UPCOMING CONFERENCES



MS4 CECI Compliance & Enforcement Certified Inspector

Federal and State Officials speak

[CLICK HERE to LEARN MORE](#)



Provided by the NPDES Stormwater Training Institute, you won't find a NPDES certification course with more useful information than the MS4 CECI seminar ANYWHERE, or your money back!

Municipalities and private consultants around the country LOVE MS4 CECI training!

"The videos with equipment demonstrations really helped make it practical"

The EPA and state regulator discussions made the course practical and helped me understand how to properly regulate water quality problems in my MS4"

Great training! I feel like I know what to do now with my inspections, both for illicit discharges and construction sites."

"I liked the interaction with the instructor, updated information and all the new resources given out."

"The instructor was patient and really did a good job of answering questions"

"Excellent Course! Video's and Interaction with Instructor!"



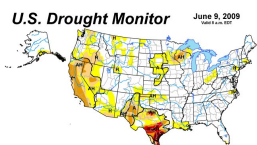
In addition to the material you receive, after passing your exam, you will receive a Certificate of Completion worth 14 CEUs and a MS4 CECI photo ID card.

Call us at 678-469-5120 and speak with Rita or Tami and/or email us at Needinfo@MS4training.com



**HERE's TO TIGHT LINES & GOOD TIMES
in Clean Abundant Water!!!**

***It's important that we sacrifice a little today to give our kids an equally great place to live, swim, fish, and hunt tomorrow!
There is a lot happening with water regulations that affect a diverse community of public and private entities. If you have***



US Drought Monitor



areas of interest that you would like included in this newsletter, please contact us at 678-469-5120.



T. Luke Owen, PG
President/Principal Trainer
and Consultant

www.npdestraining.com
www.ms4training.com
www.erosiontraining.com
Luke@npdestraining.com

