



#### IN THIS ISSUE

[FIELD MANUAL](#)

[NEW GREENBOOK](#)

[S.T.R.E.A.M SEMINAR](#)

[ONLINE COURSES](#)

[TOOL BOX - NOI's, NOTs & PERMITS](#)

[UPCOMING EVENTS!](#)

#### Quick Links

[CHECK EXAM RESULTS](#)

[COURSE SCHEDULE](#)

[NEWSLETTER ARCHIVES](#)

CLICK HERE TO PURCHASE  
THE FIELD MANUAL

**Buy Now**



NOTE: The 2002 is version of the FIELD MANUAL is the only one. It is NOT THE GREENBOOK.

## The METRO ATLANTA POPULATION EXPLOSION & THE IMPACT ON AVAILABLE CLEAN WATER



Population growth produces jobs in the construction sector which is good economically but we cannot forget the challenges we must face with the massive growth coming back to join us in Georgia. Water quality challenges that are born from the removal of forests, construction related sediment in stormwater runoff, and the addition of hard impervious surfaces that

adds volume & velocity of stormwater, is a big problem for Georgia. Yes, along with a recovering economy in one of the nations fastest growing states (Georgia), water volume and water quality challenges are multiplied at the same time and must be taken seriously if Georgia is to hold on to a strong growing economy instead of one where people choose to leave for greener pastures because of water resource issues.

A good hard look at Atlanta's Regional Commission (ARC) rundown on our population growth is important to know. The attached article explores ARC's annual population estimates for 2014 to assess how we are recovering from the slowdown experienced during the Great Recession.



Here are some of the key findings:

- Between April 1, 2013 and April 1, 2014, the 10-county Atlanta region added 52,700 new residents, the largest single-year growth since the Great Recession.
- Fulton County added the most new residents last year, up 12,700 new residents, followed by Gwinnett (+11,900), Cobb (+9,600) and DeKalb

(+6,300).

- Between 2010 and 2014, the region averaged 41,000 new residents each year. But between 1990 and 2010, the region

FIELD MANUAL  
FOR  
EROSION  
AND  
SEDIMENT CONTROL  
IN  
GEORGIA

VEGETATIVE AND STRUCTURAL  
BEST MANAGEMENT PRACTICES (BMP'S)  
FOR  
LAND-DISTURBING ACTIVITIES



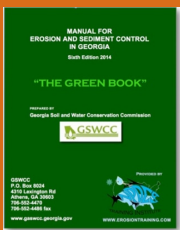
GEORGIA SOIL AND WATER  
CONSERVATION COMMISSION

View our videos on **YouTube**

**Buy Now**



TO ORDER YOUR HARD COPY  
OF THE NEW  
BIG GREENBOOK!!



PLEASE NOTE: THIS IS  
NOT THE FIELD MANUAL!



averaged 77,000 new residents.  
[MORE](#) for ARCs Report!

## WESTERN US DROUGHT is a Good Reminder of Georgia's Drought Just a few Years Ago



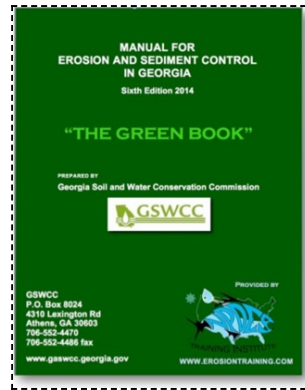
As California closes out its eighth month of a drought State of Emergency, effects of the water shortage are being felt across the state. Hundreds of residents in rural San Joaquin Valley have become the first Californians to run out of tap water as dwindling flows from the Tule River have caused their wells to dry up. The Marines' Camp Pendleton has increased its recycled water production by 50 percent, and more than 4,000 wildfires have burned more than 80,000 acres since January 1. Even the mountains are moving- without water to weigh them down, some parts of California's mountains have moved upward more than half an inch.

[CLICK HERE](#) FOR MORE DROUGHT PHOTOS

## The 6th Edition Green Book

Printed and Bound  
\$45 plus S&H

Fully Updated



Buy Now



## THE NEW MANUAL SET's THE BMP TESTING STANDARDS NATIONALLY

with support of the USEPA, AASHTO, International Erosion Control Association (IECA), Water Environment Federation (WEF) & over 19 different states!

**READ THE NPDES TRAINING NEWSLETTER JULY UPDATE FOR A FULL HISTORY AND EXPLANATION OF THIS STATE OF THE ART MANUAL!**

(If you would prefer to download a free copy [\*\*CLICK HERE\*\*](#))

---

## MS4 Permittees & WATERS of the US

The U.S. EPA and the U.S. Army Corps of Engineers have released a proposed rule that would amend the existing definition of "Waters of the United States". The proposed rule would alter permitting programs under the Clean Water Act that regulate

dredging, filling and stormwater discharges, and it would expand other regulatory obligations.



**FISH WITH KIDS!**

The Associated General Contractors of America (AGC) and 11 other groups active in the real estate development, construction, and management fields called on the Environmental Protection Agency (EPA) and the US Army Corps of Engineers (Corps) to categorically exclude municipal separate storm sewer systems (MS4s) from being





considered "waters of the U.S." (WOTUS) in official comments submitted to the agencies' proposed rulemaking.

[CLICK HERE](#) TO LEARN MORE from AGC of America

[CLICK HERE](#) to LEARN MORE from US EPA

Public Comment Period Ends October 20th!

**OCTOBER 22, 2014**  
**TIME TO REGISTER for this GREAT EVENT!**



**Griffin Annual S.T.R.E.A.M and BMP Demonstration Field Day - 2014**

Information Register Now

WHEN  
Wednesday, October 22, 2014  
8:00 AM - 5:00 PM

[REGISTER NOW](#)

The City of Griffin in cooperation with the NPDES Training Institute is now accepting

Summary  
Invitation  
Location

**WONDERING ABOUT ONLINE RENEWAL  
INSTEAD OF CLASSROOM?**



**ONLINE RENEWAL IS EASY!**

[CLICK HERE for a Quick Video Demonstration](#)

**LEVEL 1A, LEVEL 1B and LEVEL II  
ONLINE RECERTIFICATION !**

**CLASSROOM COURSE SCHEDULE**

**SIGN UP FOR A COURSE**

**EROSIONTRAININGONLINE.COM**



Like us on Facebook

View our profile on **LinkedIn**



**PROUD TO BE ON AGC's NATIONAL ENVIRONMENTAL STEERING COMMITTEE**

Which Water Would You Prefer to Swim or Fish?



**COMPLIANCE TOOL BOX**



**NPDES Training Institute**  
"Training That Helps It All Make Sense!"



[GREEN BOOK \(Manual for E&SC in Georgia - New 2014\)](#)

[GREEN BOOK Video Presentation](#)

[GREEN BOOK Update Presentation Free Download](#)

[GREEN BOOK Transition Period Guidance \(NOW CANCELLED\)](#)

[2013 NOI & NOT Forms](#)

[2013 FACT SHEET - NPDES General Permit for Construction \(GA\)](#)

[2013 FACT SHEET ADDENDUM - NPDES General Permit for Construction](#)

[2013 GAR100001 - NPDES GENERAL PERMIT - STAND ALONE](#)

[2013 GAR100002 - NPDES GENERAL PERMIT - INFRASTRUCTURE](#)

[2013 GAR100003 - NPDES GENERAL PERMIT - COMMON DEVELOPMENT](#)

[WHO NEEDS TO BE CERTIFIED in GEORGIA - FACT SHEET](#)

[March 5, 2012 Memo for Projects Less than 1-Acre](#)

[2012 303d LIST - GEORGIA](#)

[2007 EPD GUIDANCE TO SWCC DISTRICTS FOR PLAN REVIEWS](#)

[CITY OF ATLANTA - Forms, Checklists & CAD Sample Plans](#)



[2009 MODEL ORDINANCE \(Read Page 7, paragraph C\)](#)

[BUILDING & RENOVATING A POND in GEORGIA](#)

[CONCRETE WASHOUT PROCEDURES](#)

[STATE WATERS \(CCouch Ltr 2004\)](#)

[LOCAL ISSUING AUTHORITIES - NEW FEB 2012 List](#)

[ALTERNATIVE BMP GUIDANCE DOC](#)

[TMDL IMPLEMENTATION PLANS](#)

[STREAMBANK & SHORELINE RESTORATION in GEORGIA](#)

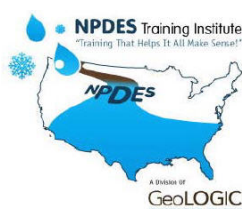
[GESA Exemption #8](#)

[BUFFER VARIANCE REQUIREMENTS FOR DAMS](#)

---



## MORE STORMWATER CONFERENCES & TRAINING EVENTS



[S.T.R.E.A.M - City of Griffin & NPDES TRAINING INSTITUTE](#) have partnered to provide Georgia's most popular Annual Stormwater & Erosion/Sedimentation Field Seminar on OCTOBER 22nd!



[SOUTHEAST STORMWATER ASSOCIATION](#)  
(UPCOMING CONFERENCES)



[GEORGIA ASSOCIATION OF WATER PROFESSIONALS](#)  
(UPCOMING CONFERENCES)

[GRWA](#)  
(UPCOMING CONFERENCES)



[WEF](#) - WATERS WORTH IT!



[IECA SE Chapter](#)

UPCOMING CONFERENCE AUGUST-2014

## MS4 CECI

### Compliance & Enforcement Certified Inspector

Officials from US EPA & GA EPD speak

[MS4 CECI Training Event](#)



[CLICK HERE to LEARN MORE](#)



Hosted by the NPDES Training Institute, you won't find a NPDES certification course with more useful information than the MS4 CECI seminar ANYWHERE, or your money back!

*Municipalities and private consultants alike love the MS4 CECI training!*

*"The videos with equipment demonstrations really helped make it practical"*

*The EPA and EPD discussions made the course practical and helped me understand how to properly regulate water quality problems in my MS4"*

*Great training! I feel like I know what to do now with my inspections, both for illicit discharges and construction sites."*

*"I liked the interaction with the instructor, updated information and all the new resources given out."*



*"The instructor was patient and really did a good job of answering questions"*

*"Excellent Course! Video's and Interaction with Instructor!"*

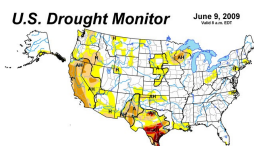


*In addition to the material you receive, after passing your exam, you will receive a Certificate of Completion worth 8 CEUs and a MS4 CECI photo ID card.*

*Call us at 678-469-5120 and speak with our helpful staff and/or email us at [Needinfo@MS4training.com](mailto:Needinfo@MS4training.com)*



International Erosion  
Control Association  
**JOIN TODAY**



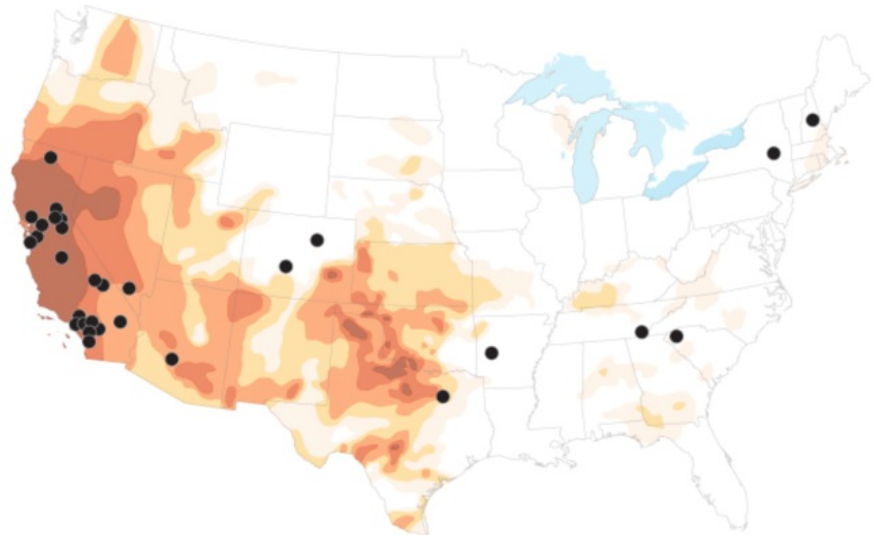
**US Drought Monitor**

## Your Bottled Water Probably Comes From a Drought Zone

### Lots of Your Bottled Water Comes From Drought Zones

Where Aquafina, Dasani, Arrowhead, and Crystal Geyser get their water

Abnormally dry Moderate drought Severe drought Extreme drought Exceptional drought



Weather Channel

The long-term Western drought is a problem that's causing all of us to suffer. As the ground dries up and vegetation dies all over California, the thriving bottled water business **is looking at serious issues ahead**, reports Mother Jones. Below is a map created using the main sources of water for four bottled-water companies - **Dasani, Aquafina, Crystal Geyser and Arrowhead**. Then, they overlaid the current **U.S. Drought Monitor**, which measures the extent and severity of the drought all over the country.

[\*\*MORE\*\*](#) from the Weather Channel

***HERE's TO TIGHT LINES & GOOD TIMES***



*in Clean Abundant Water!!!*

***It's important that we sacrifice a little today to give our kids an equally great place to live, swim, fish, and hunt tomorrow! There is a lot happening with water regulations that affect a diverse community of public and private entities. If you have areas of interest that you would like included in this newsletter, please contact us at 678-469-5120.***



Metropolitan North  
Georgia Water Planning  
Distr



T. Luke Owen, PG  
President/Principal Trainer  
and Consultant

[www.npdestraining.com](http://www.npdestraining.com)  
[www.ms4training.com](http://www.ms4training.com)  
[www.erosiontraining.com](http://www.erosiontraining.com)  
[Luke@npdestraining.com](mailto:Luke@npdestraining.com)

