



October 2013



IN THIS ISSUE

[QUESTIONS & ANSWERS](#)

[WE SERVE MEALS!](#)

[GOOD INTENTIONS
GONE BAD!](#)

[ONLINE COURSES](#)

[2013 NPDES NOIs, NOTs
& PERMITS](#)

[CLEAN WATER
ENFORCEMENT](#)

[GUARANTEED
TRAINING!](#)

[UPCOMING EVENTS!](#)

[DAMS ON THE HOOCH](#)

[MS4 CERTIFICATION
CARD](#)

Quick Links

[CHECK EXAM RESULTS](#)

[COURSE SCHEDULE](#)

[NEWSLETTER
ARCHIVES](#)

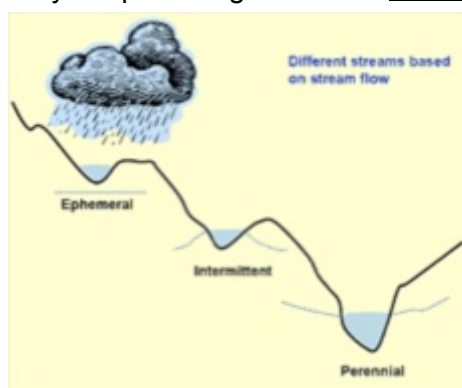


Order Your Field Manual
Today!

Greetings!

You have until November 6, 2013 to voice your opinion before the USEPA turns serious decisions into regulations that will affect the public, and how stormwater professionals manage our watersheds! One goal of the rule is to clarify which waters are not subject to CWA jurisdiction and which activities do not require CWA permits. The proposed rule DOES NOT change existing agricultural exemptions.

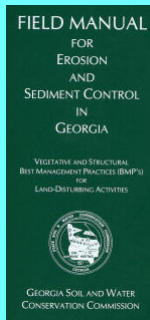
EPA has just released a draft report titled "Connectivity of Streams and Wetlands to Downstream Waters: A Review and Synthesis of Scientific Evidence." The report will be used by the USEPA & US Army Corps of Engineers in a December 2013 rulemaking session



that will be used to clarify the jurisdiction of the Clean Water Act, and will be used to clarify "connectivity," of ephemeral (wet weather ditches), wetlands, etc., **and will have a big impact on the stormwater community & construction industry.**

The EPA is asking for public comments that MUST be received by November 6, 2013.

[MORE](#)



View our videos on 



FISH WITH KIDS!



We serve LUNCH for ALL initial courses! This is included in your registration fee, and we did not raise our prices.

- Attendees receive a **FREE FIELD MANUAL & updates** at all classroom trainings.
- **SATURDAY** Level 1A Fundamentals & Level 1A/1B and Level II Re-cert courses will resume in February 2014 in Norcross!

SCHEDULE OF COURSES

[CLICK HERE to Register](#)

If you have special requests, We Listen!
678-469-5120
rita@erosiontraining.com

eSTORMWATER CORNER

QUESTION 1:

I just learned that my city is a MS4 community and that my water bill is going to go up. What the heck is a an MS4? Is the government getting out of control with all these new fees and charges they're forcing me to pay?



ANSWER 1:

First of all, we all need to understand that streets, sidewalks, parking lots, subdivisions and shopping centers do not come without stormwater related economic and environmental consequences.

Manmade hardscapes are built to give us all a great place to live. I'm personally grateful for paved roads, my house, and the hotels that make my life comfortable, however these manmade structures cover up the earth's surface and do not allow the rainwater to soak into the canopy of a forest or into the top soils that once were there and kept our water volume down to a minimum and also kept it clean. Responsible, forward thinking construction is good for our economy, however the impacts from typical hardscapes we still build today and in our past, forces rainwater to act in a way that causes water volume (flooding) and poor water quality (pollution) to be too much for us to handle. A MS4 (municipal separate storm sewer system) is America's way of dealing with the massive increase of stormwater volume and pollution that we have caused ourselves through land development.

Officially, an MS4 is a conveyance or system of conveyances (including roads with drainage systems, municipal streets, catch basins, curbs, gutters, ditches, man-made channels, or storm drains) that are owned or operated by a state, city, town, borough, county, parish, district, association, or other public body.



I've attached a brief video where we walk from the top of the Suwanee Creek Watershed all the way down to where the creek enters the Chattahoochee River. In the ["What is a watershed, Really?"](#) video, we see just a glimpse of the storm damage and water quality impacts to our communities when it rains. The operator of an MS4 is trying to mitigate and/or remediate the damage to our watersheds from our land development activities (hopefully in a financially responsible way).

[MORE](#)

QUESTION 2:

How much water hits the ground with a 1-inch rain on 1-acre in Georgia?

ANSWER 2:



This is 27,000 gallons/minute flow is being pumped into a river from a flooded area following a hurricane. Pretty nasty!

Buford, Georgia went through a 6-inch rain in 24-hours on May 18 2013. We need to respect stormwater!!

A 30-inch pipe, outputting 27,000 gallons of water per minute, spews out blackened water at the 17th Street Canal in New Orleans on Friday, Sept. 9, 2005, as the city is slowly drained following hurricane Katrina. (AP Photo/Steven Schme)

EROSION CAN COST A LOT! "GOOD INTENTIONS GONE BAD"





Future Capital Holding Corporation (FSGC) filed suit in November 2009 against the city for approving development plans for an apartment complex and adjacent senior living residences then failing to follow through for providing a proper stormwater management system. As outlined in the original complaint, the water flows openly onto a portion of "usable" land owned by the management company effectively making it a dumping area.

In September, the jury decided against the city in the amount of \$219,975 in actual damages, \$39,295 interest and \$108,096 in attorney fees for the plaintiff.

[MORE](#)

**"CONSERVATION EDUCATION
FOR THE OUTDOORSMAN IN ALL OF US!"**

- > Convenient
- > Easy to Use
- > Available 24/7

[**GEOLOGICONLINE.COM**](http://GEOLOGICONLINE.COM)



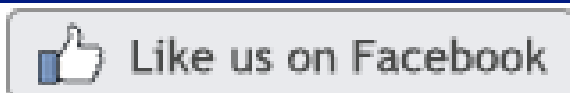
Click Here for

ONLINE RECERTIFICATION TRAINING!

[PRINT A COURSE SCHEDULE](#)

[SIGN UP FOR A COURSE](#)

EROSIONTRAININGONLINE.COM





PROUD TO BE AGC's STORMWATER TRAINING PROVIDER

COMPLIANCE TOOL BOX



[2013 NOI & NOT Forms](#)

[2013 FACT SHEET - NPDES General Permit for Construction \(GA\)](#)

[2013 FACT SHEET ADDENDUM - NPDES General Permit for
Construction \(GA\)](#)

[2013 GAR100001 - NPDES GENERAL PERMIT - STAND ALONE](#)

[2013 GAR100002 - NPDES GENERAL PERMIT - INFRASTRUCTURE](#)

[2013 GAR100003 - NPDES GENERAL PERMIT - COMMON DEVELOPMENT](#)

[March 5, 2012 Memo for Projects Less than 1-Acre](#)

[2012 303d LIST - GEORGIA](#)

[2007 EPD GUIDANCE TO SWCC DISTRICTS FOR PLAN REVIEWS](#)

[CITY OF ATLANTA - CAD Sample Plans](#)

[2009 MODEL ORDINANCE \(Read Page 7, paragraph C\)](#)

[BUILDING & RENOVATING A POND in GEORGIA](#)

[CONCRETE WASHOUT PROCEDURES](#)

[STATE WATERS \(CCouch Ltr 2004\)](#)

[LOCAL ISSUING AUTHORITIES - NEW FEB 2012 List](#)

[ALTERNATIVE BMP GUIDANCE DOC](#)

[TMDL IMPLEMENTATION PLANS](#)

[PLAN REVIEW GUIDANCE DOC](#)

[NPDES FACT SHEET \(Summarized changes\)](#)

[STREAMBANK & SHORELINE RESTORATION in GEORGIA](#)

[GESA Exemption #8](#)

[BUFFER VARIANCE REQUIREMENTS FOR DAMS](#)

CLEAN WATER LAW ENFORCEMENT

GEORGIA EPD ENFORCEMENT

PROPOSED ORDERS:

Under authority of the Water Quality Control Act (including Surface Water Allocation) :



Facility:	<u>Lake Alice</u> and surrounding areas/Cumming; order issued to the Marcus Mashburn, Jr. and Alice S. Mashburn Family Trust and the City of Cumming
Location:	Forsyth County
Order Number:	EPD-WQ-5476
Cause of Order:	Sediment released because earthen dam failed/collapsed; sediment impacted state waters including Lake Lanier; this order supercedes administrative order EPD-WQ-AO 5458
Requirement(s) of Order:	Obtain services of certified design engineer to provide guidance for immediate and temporary stabilization of all disturbed areas; have installed proper erosion and sedimentation controls to prevent further release of sediment into state waters until site is completely stabilized; submit detailed assessment to EPD, of extent of sediment deposition into state waters; develop plan/with schedule, for removal of deposited sediment from state waters, and permanent stabilization of all disturbed/affected areas; after public notice, public comment, and upon approval of EPD and U.S. Army Corps of Engineers, implement plan
Settlement Amount:	
Date Notice Posted:	September 30, 2013
Comment Period Closes:	October 30, 2013



Send Dr. Bert Langley-Manager/Mountain District
Comments To: Environmental Protection Division
Post Office Box 3250
Cartersville, Georgia 30120

Facility: City of Valdosta sewer system

Location: Lowndes County

Order Number: EPD-WQ-5478

Cause of Order: Major spills to waters of the state; heavy rains/flooding causing damage to sewer system and Withlacoochee water pollution control plant

Immediately implement revised Sewer Overflow Response & Reporting Procedures, as approved; implement interim plan for meeting permit compliance at WPCP; complete relocation of Withlacoochee WPCP & improvements to sewer system according to construction schedule, to include: pump station, force main, headworks & equalization basin to be completed by July 2016,

Requirement(s) of Order: 2)complete relocation of Withlacoochee WPCP to new location 60 ft above current flood level & continue ongoing repairs to existing plant by August 2017, 3)by December 2018, complete 5 year collection system evaluation program for entire sewer collection system; additionally complete supplemental environmental project that will result in water quality improvement or water conservation, completing by December 31, 2016;

Settlement Amount: None

Date Notice Posted: September 25, 2013

Comment Period Closes: October 25, 2013

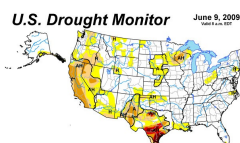
Mr. James A. Capp , Chief, Watershed Protection Branch

Send Environmental Protection Division
Comments To: 4220 International Parkway, Suite 101
Atlanta, Georgia 30354

EXECUTED ORDERS

Under authority of the Water Quality Control Act (including Surface Water Allocation) :

NONE FOR THE WEEK OF 10-14 through 10-18



US Drought Monitor



1. Want some feedback from our past students? Read reviews from our **"Raving Fans"**
2. **DON'T FORGET ABOUT OUR ONLINE COURSES FOR THE CONSTRUCTION INDUSTRY to name a few:**
 1. Hazard Communication
 2. Heat Stress
 3. Lockout-Tagout Awareness
 4. Hearing Protection
 5. Personal Protective Equipment (PPE)
3. **We are here to Help YOU!**
We can set you up so you can perform your own inspections and water sampling, or we can do them for you. We can give you a killer deal on an EPA Compliant **Hanna Turbidimeter**. We can also help even if it's just answering a question or two.



Contact us anytime at 678-469-5120
or info@npdestraining.com

MORE STORMWATER CONFERENCES

[SOUTHEAST STORMWATER ASSOCIATION \(SESWA\)](#)
(UPCOMING CONFERENCES)

[GEORGIA ASSOCIATION OF WATER PROFESSIONALS](#)
(UPCOMING CONFERENCES)

[GEORGIA RURAL WATER ASSOCIATION \(GRWA\)](#)
(UPCOMING CONFERENCES)

[INTERNATIONAL EROSION CONTROL ASSOCIATION \(IECA\)](#)
(UPCOMING CONFERENCES)

DAMS ON THE CHATTAHOOCHEE



GOAT ROCK DAM GOAT ROCK LAKE



Goat Rock Dam

Completed in 1912, Goat Rock Dam has changed very little since it was first constructed. Owned by Georgia Power, it produces hydroelectric power and impounds Goat Rock Lake. It is located on the downstream end of Goat Rock Lake, about 9 miles north of Columbus. In May 2000, VA Tech Hydro received a contract for two 8.7-MW axial turbines and generators to

re-power Units 1&2, originally built in 1915 and 1920, respectively, with 3-MW Camelback Francis turbines.

See more at: <http://www.brownsguides.com/v/chattahoochee-river-dams/#sthash.JnMZw9tq.dpuf>

NEW

MS4 CERTIFICATION

After taking the [MS4 STORMWATER TREATMENT SYSTEM CERTIFIED INSPECTOR \(STSCI\) course](#), [you will receive a certification card with your photo](#). The MS4 certification card proves that you have been trained and have been educated about the MS4 program, inspections, and reporting requirements!



We can also help you with your annual reporting. We have teamed with CBI, the nations premier MS4 Reporting Software company who are working stormwater professionals. If you are having a difficult time organizing all of those records and submitting that Annual Report to you state environmental agency, we can

help! Not only do we provide MS4 Training for cities, counties, DOTs and universities, we also get you connected with a cost effective solution for your MS4 Annual Reporting Requirements!

The [MS4 Web software](#) is customizable state of the art software that can make annual reporting less expensive, much simpler, and a lot easier!

CONTACT US if you want to be MS4 certified and/or need more information about our highly rated training and MS4 reporting software!



*Before the Clean Water Act was passed, sediment, sewage, and chemicals caused America's rivers, like the Chattahoochee River, to be void of fish. As Americans, we cannot take our eyes off of the importance of water quality. **Respecting our neighbors downstream** is what we try to remind people! It's important that we sacrifice a little to give our future generations an equally great place to work, live, fish, hunt, and play.*



There is a lot happening today with water regulations that affect a diverse community of public and private entities. If you have areas of interest that you would like included in this newsletter, please contact us at 678-469-5120.

Sincerely,
NPDES TRAINING INSTITUTE

T. Luke Owen, PG
President/Principal Trainer and Consultant
www.npdestraining.com
www.ms4training.com
www.erosiontraining.com
Luke@npdestraining.com

