

**MAY 2014**



**NEWSLETTER**



**IN THIS ISSUE**

[QUESTIONS & ANSWERS](#)

[QUESTIONS & ANSWERS](#)

[ONLINE COURSES](#)

[TOOL BOX - NOI's, NOTs & PERMITS](#)

[GUARANTEED TRAINING!](#)

[UPCOMING EVENTS!](#)

[CLEAN WATER VIOLATIONS](#)

## Did you know the laws that protect streams and wetlands are going through a renovation?

The USEPA's proposed changes may have a dramatic impact on water quality and may be good or bad for America's immediate and long term future. The U.S. Environmental Protection Agency and U.S. Army Corps of Engineers jointly released a proposed rule to clarify protection under the Clean Water Act for streams and wetlands that form the foundation of the nation's water resources. Determining Clean Water Act protection for streams and wetlands became

confusing and complex following Supreme Court decisions in 2001 and 2006. The [proposed rule](#) was published in the Federal Register on Monday, April 21, 2014.

The will be open for 91 days and will close on Monday, July 21, 2014.



### Quick Links

[CHECK EXAM RESULTS](#)

[COURSE SCHEDULE](#)

[NEWSLETTER ARCHIVES](#)

CLICK HERE TO PURCHASE  
THE FIELD MANUAL

**Buy Now**



NOTE: The 2002 is version of the FIELD MANUAL is the only one. It is NOT THE GREENBOOK.

### [WHAT THE RULE DOES AND DOESN'T DO!](#)

## **JUNE 11th, DON'T MISS IT!**

**The US EPA & GA EPD speak at the  
Associated General Constructors of America  
in Marietta, Georgia June 11th, 2014**

### [MS4 CECI Training Event](#)

Want to learn more about the MS4 program and and get certified as an MS4 Compliance and Enforcement Certified Inspector (MS4 CECI)?

# FIELD MANUAL FOR EROSION AND SEDIMENT CONTROL IN GEORGIA

VEGETATIVE AND STRUCTURAL  
BEST MANAGEMENT PRACTICES (BMP'S)  
FOR  
LAND-DISTURBING ACTIVITIES



GEORGIA SOIL AND WATER  
CONSERVATION COMMISSION

View our videos on **YouTube**

## US EPA UPDATE



You're in for a  
treat on June 11th  
when you attend  
our next seminar!



**Reserved for  
course  
participants  
only** with limited

seating, come and

listen as federal and state regulators speak about their role in the NPDES MS4, Construction and Post Construction stormwater permit program.

**SIGN UP NOW**

**SEATING IS LIMITED!**

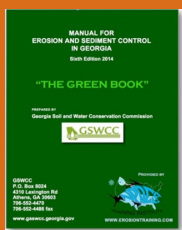
**RESERVE YOUR PLACE TODAY!**

Hosted by the NPDES Training Institute, you won't find a certification course with more useful information than the MS4 CECI seminar ANYWHERE, or your money back!

**Buy Now**



**ORDER YOUR HARD COPY OF  
THE NEW GREENBOOK  
TODAY!!**



**PLEASE NOTE: THIS IS  
NOT THE FIELD MANUAL!**

*Municipalities and private  
consultants alike love the  
MS4 CECI training!*

*"Great training! I feel  
like I know what to do  
now with my  
inspections, both for  
illicit discharges and  
construction sites."*



*"I liked the interaction  
with the instructor, updated information and all the new  
resources given out."*

*"The instructor took the time to make sure we understood  
our material. I feel like he really cares about what he's  
training!"*

*"Excellent Course! Video's and Interaction with Instructor!"*



On top of all the other material you receive, after passing your exam, you will receive a Certificate of Completion worth 8 CEUs and a MS4 CECI photo ID card.

Call us at 678-469-5120 and speak with our helpful staff and/or email us at [Needinfo@MS4training.com](mailto:Needinfo@MS4training.com)



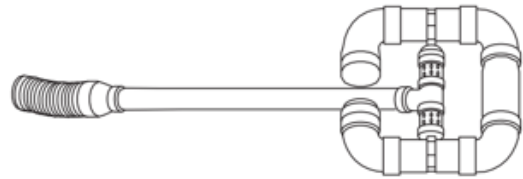
**What is a  
FLOATING SURFACE SKIMMER?**

## "Do I have to use it on my erosion plan?"

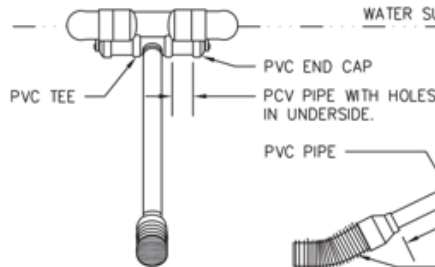
### Sk - FLOATING SURFACE SKIMMER

NOTE:  
SKIMMER CONFIGURATION SHOWN IS  
TYPICAL. THE DESIGNER/ENGINEER  
MAY SUBMIT AN ALTERNATE SKIMMER  
DETAIL FOR REVIEW.

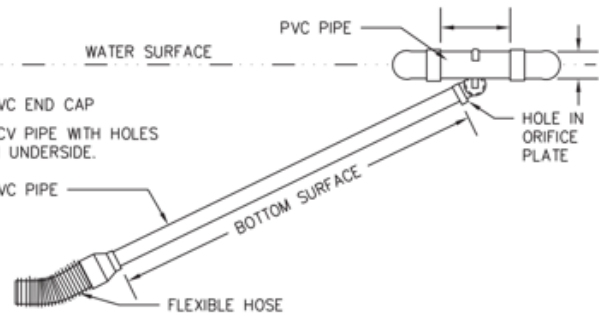
SKIMMER PERSPECTIVE



SKIMMER FRONTAL SECTION VIEW



SKIMMER SIDE SECTION VIEW



*A floating surface skimmer is a buoyant device that releases and/or drains water from the surface of sediment ponds, traps or basins at a controlled rate of flow. It "skims", or dewater, from the water surface where sediment concentrations are at a minimum in the water column instead of draining from the bottom where sediment concentrations are their highest, and drains to a riser or the backside of a dam.*

The US EPA, Georgia EPD and every other state in the country now require the use of a surface water skimming devices on all temporary sediment ponds on NPDES Permitted sites during construction. If it's thought the device will not work on any given project, a thorough explanation for avoiding it's use must be submitted with the Erosion Sedimentation and Pollution Control (ES&PC) Plan.

While the new Manual for Erosion and Sediment Control (the GREEN BOOK) will not be required for use until January 1, 2016 on Georgia construction sites, the new GREEN BOOK does have the [Floating Surface Skimmer design discussed on pages 2-9 and 6-243 thru 6-248.](#)

### **CONSERVATION EDUCATION** **"FOR THE OUTDOORSMAN IN ALL OF US!"**

**We are ON TOP of the New Regulations**  
2014 EROSION AND MS4 TRAINING COURSES ARE  
**UPDATED** TO GEORGIA NPDES PERMITS AND STATE



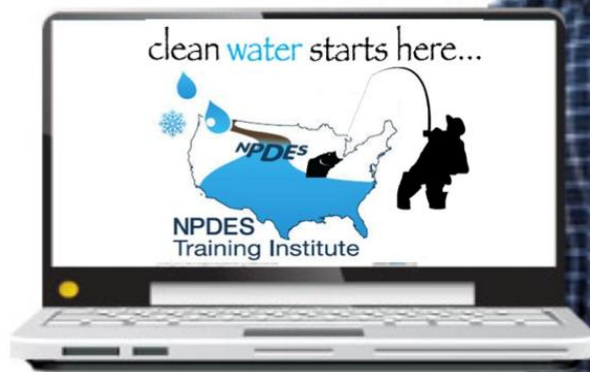
**FISH WITH KIDS!**



WATER REGULATIONS!

- > Convenient
- > Easy to Use
- > Available 24/7

[GEOLOGICONLINE.COM](http://GEOLOGICONLINE.COM)



*Click Here for*

**[ONLINE RECERTIFICATION TRAINING!](#)**

**[CLASSROOM COURSE SCHEDULE](#)**

**[SIGN UP FOR A FOR A COURSE](#)**

**[EROSIONTRAININGONLINE.COM](http://EROSIONTRAININGONLINE.COM)**



Like us on Facebook

View our profile on **Linked** 



**[PROUD TO BE AGC's STORMWATER  
TRAINING PROVIDER](#)**





# COMPLIANCE TOOL BOX



[GREEN BOOK \(Manual for E&SC in Georgia - New 2014\)](#)

[GREEN BOOK Video Presentation](#)

[GREEN BOOK Update Presentation Free Download](#)

[GREEN BOOK Transition Period Guidance \(NOW CANCELLED\)](#)

[2013 NOI & NOT Forms](#)

[2013 FACT SHEET - NPDES General Permit for Construction \(GA\)](#)

[2013 FACT SHEET ADDENDUM - NPDES General Permit for Construction](#)

[2013 GAR100001 - NPDES GENERAL PERMIT - STAND ALONE](#)

[2013 GAR100002 - NPDES GENERAL PERMIT - INFRASTRUCTURE](#)

[2013 GAR100003 - NPDES GENERAL PERMIT - COMMON DEVELOPMENT](#)

[WHO NEEDS TO BE CERTIFIED in GEORGIA - FACT SHEET](#)

[March 5, 2012 Memo for Projects Less than 1-Acre](#)

[2012 303d LIST - GEORGIA](#)

[2007 EPD GUIDANCE TO SWCC DISTRICTS FOR PLAN REVIEWS](#)

[CITY OF ATLANTA - Forms, Checklists & CAD Sample Plans](#)

[2009 MODEL ORDINANCE \(Read Page 7, paragraph C\)](#)

[BUILDING & RENOVATING A POND in GEORGIA](#)

[CONCRETE WASHOUT PROCEDURES](#)

[STATE WATERS \(CCouch Ltr 2004\)](#)

[LOCAL ISSUING AUTHORITIES - NEW FEB 2012 List](#)

[ALTERNATIVE BMP GUIDANCE DOC](#)

[TMDL IMPLEMENTATION PLANS](#)

[STREAMBANK & SHORELINE RESTORATION in GEORGIA](#)

[GESA Exemption #8](#)

[\*\*BUFFER VARIANCE REQUIREMENTS FOR DAMS\*\*](#)

---

**WE GUARANTEE OUR TRAINING and DO NOT CHARGE  
YOU FOR A RETEST IF YOU RETURN!**



Want some feedback from our past students? Read reviews from our **"Raving Fans"**

### **We are here to Help YOU!**



We can set you up so you can perform your own inspections and water sampling, or we can do them for you. We can give you a killer deal on an EPA Compliant **Hanna Turbidimeter**. We can also help even if it's just answering a question or two. Contact us anytime at 678-469-5120 or [info@npdestraining.com](mailto:info@npdestraining.com)



## **MORE STORMWATER CONFERENCES & TRAINING EVENTS**

**SOUTHEAST STORMWATER ASSOCIATION (SESWA)**  
(UPCOMING CONFERENCES)

**GEORGIA ASSOCIATION OF WATER PROFESSIONALS**  
(UPCOMING CONFERENCES)

**GEORGIA RURAL WATER ASSOCIATION (GRWA)**  
(UPCOMING CONFERENCES)

**INTERNATIONAL EROSION CONTROL ASSOCIATION (IECA)**  
SE CHAPTER (UPCOMING CONFERENCES)

**WATER ENVIRONMENT FEDERATION** - WATERS WORTH IT!



## **CLEAN WATER VIOLATIONS**

Under authority of the Water Quality Control Act (including Surface Water Allocation) :

**Facility:** Spanish Moss Lane project  
site/Lawrenceville; order issued to Gwinnett County and  
Ms. Kristina T. Nolan  
**Location:** Gwinnett County  
**Order Number:** EPD-WQ-6022  
**Date of Issue:** April 29, 2014  
**Cause of Order:** Ongoing erosion on property/Watershed Improvement Project(determined by county);  
**Requirement(s) of Order:** County and Ms. Nolan will work together to correct continued erosion on property; Ms. Nolan will obtain all necessary permits from the US Army Corps of Engineers before starting construction activities; County and Ms. Nolan shall provide to EPD, proper buffer restoration plan for Phase I to restore buffer; upon approval, implement plan as emergency actions; any additional land disturbing activities within buffer will require stream buffer variance  
**Settlement Amount:** None

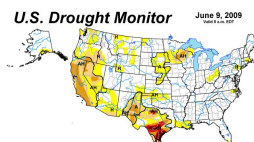


International Erosion  
Control Association  
**JOIN TODAY**

**Facility:** City of West Point sewer system  
**Location:** Harris County  
**Order Number:** EPD-WRP-14-006  
**Date of Issue:** April 25, 2014  
**Cause of Order:** Violations of NPDES Permit and spill to waters of the state  
**Requirement(s) of Order:** Correct immediately  
**Settlement Amount:** \$1500.00

**Facility:** SynCot Plastics/Cartersville  
**Location:** Bartow County  
**Order Number:** EPD-WQ-6020  
**Date of Issue:** April 25, 2014  
**Cause of Order:** Unpermitted industrial waste discharges to waters of the state  
**Requirement(s) of Order:** Submit corrective action plan/schedule including detailed measures facility will take to ensure industrial waste will not be discharged to waters of the state  
**Settlement Amount:** \$10,000.00

**Facility:** Tencate Protective Fabrics-Southern Mills, Inc.  
**Location:** Upson County  
**Order Number:** AMENDMENT # 2 TO EPD-WQ-5990



**US Drought Monitor**

**Date of Issue:** April 14, 2014  
**Cause of Order:** Schedule extension to take additional measures to improve operation of land application system  
**Requirement(s) of Order:** Authorized to discharge under current Permit conditions until September 15, 2014, or until Director makes Permit determination  
**Settlement Amount:** None

---

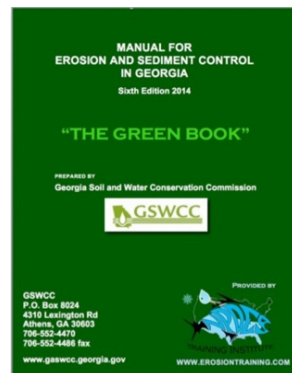
## The Green Book - Printed and Bound

### THIS IS NOT THE FIELD MANUAL

This is the full updated Manual for Erosion and Sediment Control



Metropolitan North  
Georgia Water Planning  
District



**Buy Now**



(If you would prefer to download a free copy [CLICK HERE](#))

---

*HERE's TO TIGHT LINES & GOOD TIMES  
in Clean Abundant Water!!!*





***Respecting our neighbors downstream***  
*is the BIG REMINDER!* It's important that we sacrifice a little to give our kids an equally great place to live, swim, fish, and hunt!

***There is a lot happening today with water regulations that affect a diverse community of public and private entities. If you have areas of interest that you would like included in this newsletter, please contact us at 678-469-5120.***



Sincerely,  
NPDES  TRAINING  
INSTITUTE  


T. Luke Owen, PG  
President/Principal Trainer and Consultant  
[www.npdestraining.com](http://www.npdestraining.com)  
[www.ms4training.com](http://www.ms4training.com)  
[www.erosiontraining.com](http://www.erosiontraining.com)  
[Luke@npdestraining.com](mailto:Luke@npdestraining.com)