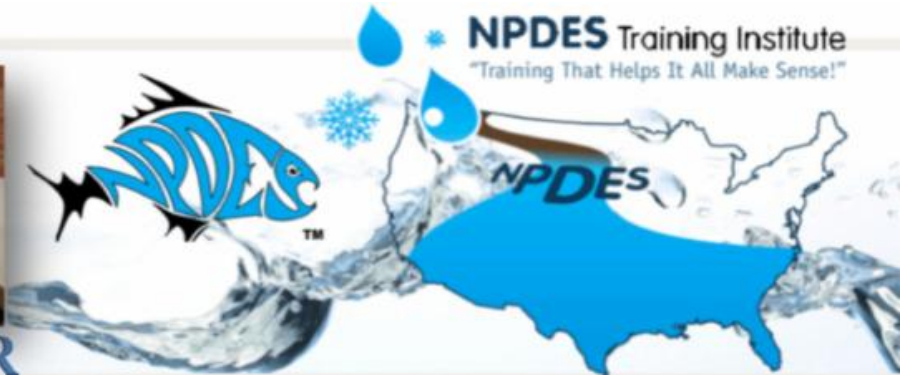


**JUNE 2014**



**NEWSLETTER**



**IN THIS ISSUE**

[FIELD MANUAL](#)

[NEW GREENBOOK](#)

[AMREP FIRE KILLS 10,000 FISH](#)

[S.T.R.E.A.M SEMINAR](#)

[ONLINE COURSES](#)

[TOOL BOX - NOIs, NOTs & PERMITS](#)

[UPCOMING EVENTS!](#)

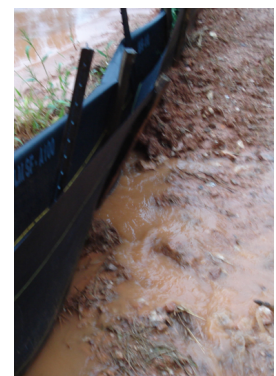
[CLEAN WATER VIOLATIONS](#)

## GDOT Sets a great example for other DOTs across the state and will not use Silt Fence as a Check Dam Anymore!

Most of us say, "It's About Time!" but let's think about the options GDOT had before using compost filter socks. The options can still be expensive both in terms of material and labor to install and remove. Recently Georgia Environmental Protection Division (EPD) notified the Georgia Department of Transportation (GDOT) that silt fence check dams installed in ditches



and arranged in either upstream V shapes or W shapes (as shown on GDOT Construction Detail D-24D), should no longer be used. EPD's decision comes after testing by the Georgia Soil & Water Conservation Commission (GSWCC) that yielded failed results on the effectiveness of silt fence fabric check dams. The issues noted were:



- 1 - Ineffective at retaining silt on the upstream side, and
- 2 - Excessive scour to the ditch on the downstream side due to water running around the ends and top of the fabric check dams.

**Effective immediately, GDOT has decided to discontinue the use of silt fence fabric check dams.**

## Quick Links

[CHECK EXAM RESULTS](#)

[COURSE SCHEDULE](#)

[NEWSLETTER ARCHIVES](#)

CLICK HERE TO PURCHASE THE FIELD MANUAL

**Buy Now**



NOTE: The 2002 is version of the FIELD MANUAL is the only one. It is NOT THE GREENBOOK.

# FIELD MANUAL FOR EROSION AND SEDIMENT CONTROL IN GEORGIA

VEGETATIVE AND STRUCTURAL  
BEST MANAGEMENT PRACTICES (BMP'S)  
FOR  
LAND-DISTURBING ACTIVITIES



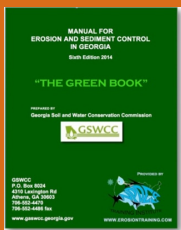
GEORGIA SOIL AND WATER  
CONSERVATION COMMISSION

View our videos on **YouTube**

**Buy Now**



TO ORDER YOUR HARD COPY  
OF THE NEW  
BIG GREENBOOK!!



PLEASE NOTE: THIS IS  
NOT THE FIELD MANUAL!



## Georgia Check Dam Options

Silt fence fabric check dams are no longer allowed  
as a BMP on all Georgia DOT projects

INTERDEPARTMENT CORRESPONDENCE

SUBJECT: Discontinuing the use of "Silt Fence Fabric Check Dam"

Recently the Georgia Department of Natural Resources/Environmental Protection Division (EPD) notified the Department that "silt fence fabric check dams" would no longer be allowed as a BMP on infrastructure construction projects. Fabric check dams are typically Type D-24(D). Disches and arranged in either upstream V shapes or W shapes (as shown D-24(D)).

EPD's decision comes after testing by the Georgia Soil & Water Conservation Commission of the effectiveness of silt fence fabric check dams. The results showed that silt fence fabric check dams are ineffective at retaining silt on the upstream side, and (2) excessive scour on the side due to water running around the ends and top of the fabric check dam.

Therefore, effective immediately, the Georgia Department of Transportation (DOT) will discontinue the use of silt fence fabric check dams on all DOT projects. Acceptable options for check dams in ditches are:

- **Stone Check Dam (Cd-S)** (Pay-Item 163-0527) (refer to GDOT Standard Specifications for Construction, Section 605.02)
- **Baled Straw Check Dam (Cd-Hb)** (Pay-Item 163-0529) (no current specification in the GSWCC Manual for Erosion and Sediment Control as of the 6th Edition)
- **Compost Filter Sock Check Dam (Cd-Fs)** (no current GDOT specification, but installation and maintenance available - refer to the GSWCC Manual for Erosion and Sediment Control in Georgia 6th Edition).

To comply with this decision, GDOT projects submitted for upcoming construction shall submit an approved Notice of Intent (NOI) to the Georgia Department of Transportation (DOT) by either Revision before advertisement, Amendment after advertisement, or Use-On-Construction Revision after award. Projects that already have an approved NOI do not require a revision.

Revisions to ESPCPs resulting from this decision are not expected to shift to scheduled construction Let Dates.

Three options are available

**Stone Check Dam**

STONE CHECK DAM (2'-10" TYP) DESTRUCTIBLE

24" MAXIMUM

Difficult to remove

**Baled Straw Check Dam**

2" X 2" STAKE OR #4 REBAR (2 PER BALES)

BALE PLACED FLAT SIDE DOWN

ORIGINAL GROUND

Requires trenching

**Compost Filter Sock Check Dam**

EXCESS SOCK MATERIAL TO BE DRAIN IN AND TIED OFF TO STAKE AT BOTH ENDS

COMPOST SOCKS SIZED TO SUIT CONDITIONS (SEE APPROVED LIST)

4" MAX

4" MAX

2" X 2" WOODEN STAKES OR #4 REBAR

BED/BANK JUNCTION

Flow

Easiest to install, maintain, and remove

See above memo for the ACCEPTABLE options for check dams in ditches are:

A - Stone Check Dam (Cd-S) - (Difficult to Remove).

B - Baled Straw Check Dam (Cd-Hb), (Must Trench Bale Behind), or

C - Compost Filter Sock Check Dam (Cd-Fs) (Fastest to Install, Maintain and Remove).

**filtrex**  
**DitchChexx™**

Filtrex® DitchChexx™ is the **original** compost sock for check dams. Use it **instead** of stone or straw bales.

Refer to the new GSWCC Manual for Erosion and Sediment Control (2014 **GREEN BOOK UPDATE DISCUSSION**) in Georgia 6th Edition for specific information).

**AMREP FIRE  
KILLS 10,000 FISH**

## SOPE CREEK, MARIETTA, GEORGIA

*As great as the Clean Water Act is at protecting and preserving our water quality, it is no match against things like this.*

by Haisten Willis, June 11, 2014



According to a report from the Georgia Department of Natural Resources, an estimated 9,590 fish were killed in Sope Creek following a May 23 chemical plant fire.

The report said water runoff from suppression of the fire at AmRep entered a private pond on Sope Creek, where

the dead fish were found. Dead fish were also found in the creek itself, directly below the pond.

The AmRep manufacturing center is on Industrial Park Road near Cobb Parkway and Allgood Road in Marietta. The plant, which makes professional-grade chemical products, broke out in a two-alarm fire, engulfing the entire warehouse and burning a building to the ground.

Days after the fire, Cobb residents called Marietta Power and Water to report dead and dying fish in the creek, which runs a about 2 miles south of the plant in east Cobb.

Read more: [The Marietta Daily Journal - Report About 10 000 fish in Sope Creek killed following AmRep fire](#)



**OCTOBER 22, 2014**

**TIME TO REGISTER for this GREAT EVENT!**





**Griffin Annual S.T.R.E.A.M and BMP Demonstration Field Day - 2014**

InformationRegister Now

WHEN

Wednesday, October 22, 2014  
8:00 AM - 5:00 PM

REGISTER NOW

The City of Griffin in cooperation with the NPDES Training Institute is now accepting

Summary

Invitation

Location

Fears of EPA 'land grab' create groundswell against water rule.





FISH WITH KIDS!

Lawmakers are up in arms over an Environmental Protection Agency (EPA) proposal that they fear could give federal officials expansive new powers over private property and farmland.



The EPA is seeking to redefine what bodies of water fall under the agency's jurisdiction for controlling pollution. The scope of the final Clean Water Act (CWA) rule is of critical importance, as any area covered would require a federal permit for certain activities.

The rule is facing a groundswell of opposition from lawmakers, who fear the EPA is engaged in a "land grab" that could stop farmers and others from building fences, digging ditches or draining ponds.

Read more: <http://thehill.com/policy/energy-environment/210130-fears-of-epa-land-grab-create-groundswell-against-water-rule#ixzz35XsQgZkw>

## **CONSERVATION EDUCATION**

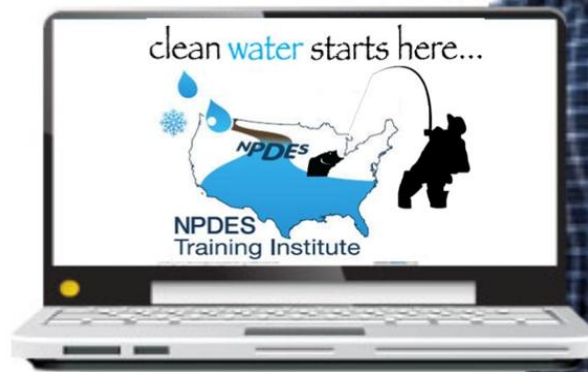
**"FOR THE OUTDOORSMAN IN ALL OF US!"**

### **WE GUARANTEE OUR TRAINING!**

2014 E&S CLASSES & MS4 TRAINING COURSES ARE  
**UPDATED** TO NPDES PERMITS AND STATE WATER  
REGULATIONS!

- > Convenient
- > Easy to Use
- > Available 24/7

**GEOLOGICONLINE.COM**



*Click Here for*

### **ONLINE RECERTIFICATION TRAINING!**

**CLASSROOM COURSE SCHEDULE**

**SIGN UP FOR A FOR A COURSE**

**EROSIONTRAININGONLINE.COM**



Like us on Facebook

View our profile on **LinkedIn**



**PROUD TO BE AGC's STORMWATER  
TRAINING PROVIDER**

## COMPLIANCE TOOL BOX



[GREEN BOOK \(Manual for E&SC in Georgia - New 2014\)](#)

[GREEN BOOK Video Presentation](#)

[GREEN BOOK Update Presentation Free Download](#)

[GREEN BOOK Transition Period Guidance \(NOW CANCELLED\)](#)

[2013 NOI & NOT Forms](#)

[2013 FACT SHEET - NPDES General Permit for Construction \(GA\)](#)

[2013 FACT SHEET ADDENDUM - NPDES General Permit for Construction](#)

[2013 GAR100001 - NPDES GENERAL PERMIT - STAND ALONE](#)

[2013 GAR100002 - NPDES GENERAL PERMIT - INFRASTRUCTURE](#)

[2013 GAR100003 - NPDES GENERAL PERMIT - COMMON DEVELOPMENT](#)

[WHO NEEDS TO BE CERTIFIED in GEORGIA - FACT SHEET](#)

[March 5, 2012 Memo for Projects Less than 1-Acre](#)

[2012 303d LIST - GEORGIA](#)

[2007 EPD GUIDANCE TO SWCC DISTRICTS FOR PLAN REVIEWS](#)

[CITY OF ATLANTA - Forms, Checklists & CAD Sample Plans](#)

[2009 MODEL ORDINANCE \(Read Page 7, paragraph C\)](#)

[BUILDING & RENOVATING A POND in GEORGIA](#)

[CONCRETE WASHOUT PROCEDURES](#)

[STATE WATERS \(CCouch Ltr 2004\)](#)

[LOCAL ISSUING AUTHORITIES - NEW FEB 2012 List](#)

[ALTERNATIVE BMP GUIDANCE DOC](#)

[TMDL IMPLEMENTATION PLANS](#)

[STREAMBANK & SHORELINE RESTORATION in GEORGIA](#)

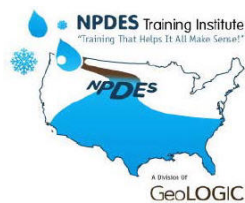
[GESA Exemption #8](#)

[BUFFER VARIANCE REQUIREMENTS FOR DAMS](#)

---



## MORE STORMWATER CONFERENCES & TRAINING EVENTS



[S.T.R.E.A.M. - City of Griffin &](#)

[NPDES TRAINING INSTITUTE](#) have partnered to provide Georgia's most popular Annual Stormwater & Erosion/Sedimentation Field Seminar on OCTOBER 22nd!



[SOUTHEAST STORMWATER ASSOCIATION](#)  
(UPCOMING CONFERENCES)



[GEORGIA ASSOCIATION OF WATER PROFESSIONALS](#)  
(UPCOMING CONFERENCES)



[GRWA](#)  
(UPCOMING CONFERENCES)



[WEF - WATERS WORTH IT!](#)

---

MS4 CECI



The US EPA & GA EPD speak at the  
Associated General Constructors of America  
in Marietta, Georgia August 13, 2014

[MS4 CECI Training Event](#)



The June MS4CECI training was AWESOME! (Food and snacks were great too) - all in all, a GREAT day! Course evaluations were extremely positive! If you would like to learn more about how to effectively perform your responsibilities in the MS4 program, get certified as an MS4 Compliance and Enforcement Certified Inspector (MS4 CECI) at our next event on **August 13th, 2014!** You'll be glad you did!

The US EPA and Georgia EPD have committed to giving us ongoing updates in their talks at all of our upcoming seminars! The next MS4CECI seminar is on **August 13th**, where you too can become MS4CECI certified!

Seating limited to 20 attendees, come and listen as federal and state regulators speak about their role in the NPDES MS4, industrial, construction and post construction stormwater permit program. A role intended to assist you, the MS4 Compliance and enforcement Certified Inspector.



**[Click Here for More information](#)**



**[SIGN UP NOW](#)**

**SEATING IS LIMITED to 20**





## RESERVE YOUR PLACE TODAY!

Hosted by the NPDES Training Institute, you won't find a NPDES certification course with more useful information than the MS4 CECI seminar ANYWHERE, or your money back!

*Municipalities and private consultants alike love the MS4 CECI training!*

*"The videos with equipment demonstrations really helped make it practical"*

*The EPA and EPD discussions made the course practical and helped me understand how to properly regulate water quality problems in my MS4"*

*Great training! I feel like I know what to do now with my inspections, both for illicit discharges and construction sites."*

*"I liked the interaction with the instructor, updated information and all the new resources given out."*

*"The instructor was patient and really did a good job of answering questions"*

*"Excellent Course! Video's and Interaction with Instructor!"*



On top of all the other material you receive, after passing your exam, you will receive a Certificate of Completion worth 8 CEUs and a MS4 CECI photo ID card.

Call us at 678-469-5120 and speak with our helpful staff and/or email us at [Needinfo@MS4training.com](mailto:Needinfo@MS4training.com)

## CLEAN WATER VIOLATIONS

Under authority of the Water Quality Control Act (including Surface Water Allocation):

<b>Facility:</b>	City of Grantville land application system(pond #4)
<b>Location:</b>	Coweta County
<b>Order Number:</b>	EPD-WQ-MDA-14-003
<b>Date of Issue:</b>	June 04,2014
<b>Cause of Order:</b>	Violations of NPDES Permit/exceeded Permit limitations
<b>Requirement(s) of Order:</b>	Correct immediately
<b>Settlement Amount:</b>	<b>\$3,100</b>

<b>Facility:</b>	City of Waco(land application system)
<b>Location:</b>	Haralson County
<b>Order Number:</b>	EPD-WQ-MDO-14-024
<b>Date of Issue:</b>	June 04,2014
<b>Cause of Order:</b>	Violations of NPDES





**Requirement(s) of Order:**

Permit/exceeded Permit limits

Correct immediately

**Settlement Amount: \$480**

**Facility:**

City of Cornelia sewer system

**Location:**

Habersham County

**Order Number:**

EPD-WQ-MDO-14-009

**Date of Issue:**

June 03,2014

**Cause of Order:**

Unpermitted discharges to waters of the state

**Requirement(s) of Order:**

Correct immediately

**Settlement Amount: \$1,750**

**Facility:**

Miller Transporters, Inc./Garden City

**Location:**

Chatham County

**Order Number:**

EPD-WQ-6028

**Date of Issue:**

June 03,2014

**Cause of Order:**

Industrial Pretreatment Permit application for renewal not submitted in timely manner; **discharged from facility to Garden City's sewage system after expiration of permit expiration date**

**Requirement(s) of Order:**

Comply with all conditions/requirements of current Permit until new pretreatment permit is issued

**Settlement Amount: \$1,000**

**Facility:**

KaMin LLC/Wrens

**Location:**

Jefferson County

**Order Number:**

EPD-WQ-6029

**Date of Issue:**

June 02,2014

**Cause of Order:**

Violations of NPDES Permit/unpermitted discharges to Mill Branch and Reedy Creek; incorrect measurements for pH

**Requirement(s) of Order:**

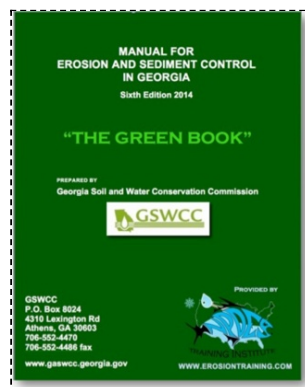
KaMin (a kaolinite clay mining company) has taken voluntary mitigative actions to correct compliance violations; has installed automatic/cutoff systems at facility's two permitted outfalls; provide documentation that verifies installation of equipment, including all pipeline, pressure transducers, flow meters and continuous level transmitters; submit Assessment, Maintenance and Improvement Plan / schedule to prevent unpermitted pollutant releases to waters of the state; plan is for impoundments that do not discharge directly through permitted outfalls;

**Settlement Amount: \$19,500**

## The Green Book - Printed and Bound \$45 plus S&H

### **THIS IS NOT THE FIELD MANUAL**

This is the full updated Manual for Erosion and Sediment Control



**Buy Now**



(If you would prefer to download a free copy [\*\*CLICK HERE\*\*](#))

---

*HERE's TO TIGHT LINES & GOOD TIMES  
in Clean Abundant Water!!!*



**Respecting our neighbors downstream is the BIG REMINDER!** It's important that we sacrifice a little today to give our kids an equally great place to live, swim, fish, and hunt tomorrow!

**There is a lot happening with water regulations that affect a diverse community of public and private entities. If you have areas**

**of interest that you would like included in this newsletter, please contact us at 678-469-5120.**

**Sincerely,**  
NPDES   

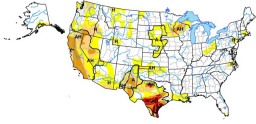

T. Luke Owen, PG  
President/Principal Trainer and Consultant  
[www.npdestraining.com](http://www.npdestraining.com)

[www.ms4training.com](http://www.ms4training.com)  
[www.erosiontraining.com](http://www.erosiontraining.com)  
[Luke@npdestraining.com](mailto:Luke@npdestraining.com)



International Erosion  
Control Association  
**JOIN TODAY**

U.S. Drought Monitor June 9, 2009  
D000 F000 D00



**US Drought Monitor**



**WATER  
USE IT  
WISELY.**

Metropolitan North  
Georgia Water Planning  
District



