

# DECEMBER 2014



## IN THIS ISSUE

[FIELD MANUAL](#)

[NEW GREENBOOK](#)

[FISH WITH KIDS!](#)

[ENFORCEMENT](#)

[GRIFFIN SEMINAR A HUGE SUCCESS!](#)

[ONLINE COURSES](#)

[TOOL BOX - NOIs, NOTs & PERMITS](#)

[UPCOMING EVENTS!](#)

## Quick Links

[CHECK EXAM RESULTS](#)

[COURSE SCHEDULE](#)

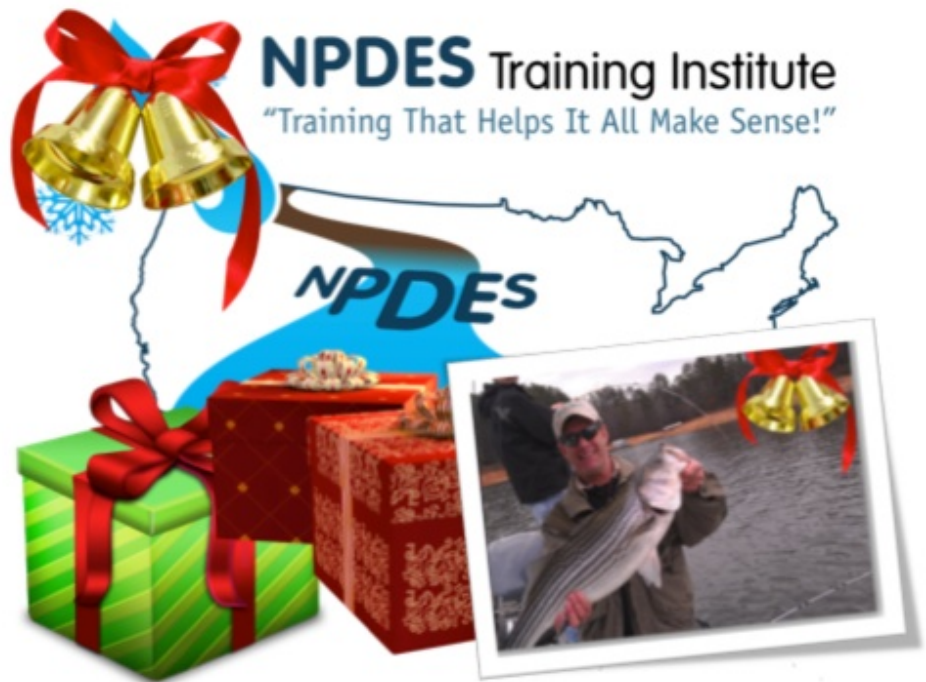
[NEWSLETTER ARCHIVES](#)

CLICK HERE TO PURCHASE  
THE FIELD MANUAL

**Buy Now**



NOTE: The 2002 is version  
of the FIELD MANUAL is the  
only one. It is NOT THE  
GREENBOOK.



**MEET YOUR END OF YEAR CEU REQUIREMENTS**

**& RECEIVE A 20% DISCOUNT**

**NOW THROUGH DECEMBER 24th when you REGISTER for  
any online or classroom course** (must use code "HOLIDAY2014")

[www.erosiontraining.com](http://www.erosiontraining.com)

[www.npdestraining.com](http://www.npdestraining.com)

[www.ms4training.com](http://www.ms4training.com)

**PLUS**

# FIELD MANUAL FOR EROSION AND SEDIMENT CONTROL IN GEORGIA

VEGETATIVE AND STRUCTURAL  
BEST MANAGEMENT PRACTICES (BMP'S)  
FOR  
LAND-DISTURBING ACTIVITIES



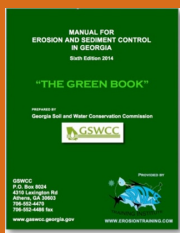
GEORGIA SOIL AND WATER  
CONSERVATION COMMISSION

View our videos on **YouTube**

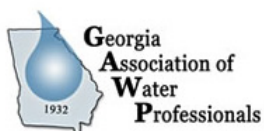
**Buy Now**



TO ORDER YOUR HARD COPY  
OF THE NEW  
BIG GREENBOOK!!



PLEASE NOTE: THIS IS  
NOT THE FIELD MANUAL!



We will present One Person with their choice of a **GUIDED  
STRIPER FISHING TRIP**

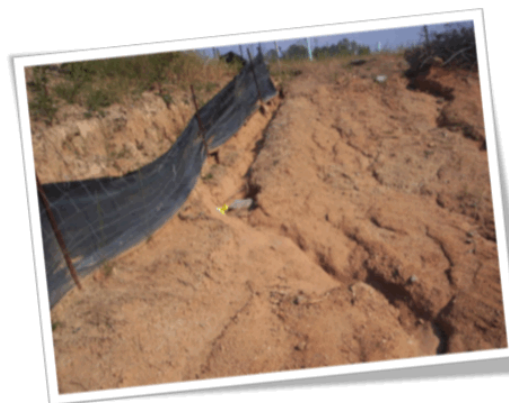
or

**\$200 BASS PRO GIFT CARD**

when they register using discount code  
"HOLIDAY2014" before December 24th  
(Gift will be delivered after January 1, 2015)

**PROFESSIONAL GUIDE - CLAY CUNNINGHAM**  
**"CATCHING NOT FISHING"**

## SUPERINTENDENTS & TMDLs (A Necessary Relationship!)



Sediment Missing Here is Sitting at the  
Bottom of the Chattahoochee River,  
see below.

In towns and cities across America, land disturbing activities are a necessary component of our economic growth, but can also have a huge negative impact on water quality for us and our fish populations. If we don't keep things tidy along the way the consequences pile up to be enormous. Just look at China today as one of many examples of a prosperous industrial manufacturing

engine that has and is burning up it's air, land, and water resources like it's going out of style!

The negative impact to our water quality occurs when stormwater containing large amounts pollutants (sediment)



FISH WITH KIDS!

drains into the local watershed, filling it up with mud, removing oxygen, water storage capacity and suffocating the fish, fish eggs, and the critters (macro-invertebrates) that crawl on the bottom. Any creek, stream, river or lake can only take so much pollution (sediment in this case) before its water can no longer support the natural life living within it. When a segment of a



Chattahoochee River



creek can no longer clean itself out naturally given the sediment load it receives every time it rains, scientists call it an "impaired stream" segment.

**The good news** about this tough situation for the USA is the Clean Water Act and the rules that now require we monitor our watersheds and implement plans to either prevent or

repair a damaged water body.

One method to repair a stream is for stormwater pollution prevention plans (SWPPPs) to be properly implemented. In Georgia, we call SWPPPs for construction the "erosion plan" or E&SC Plan or Erosion, Sedimentation and Pollution Control Plan (ES&PC Plan). The not so good and challenging news is that the people who implement the plan must do a good job in designing, installing and maintaining the best management practices

(BMPs) in the SWPPP if our watersheds are to be protected. This is where the rubber meets the road and when the **superintend** takes responsibility for properly installing and maintaining the BMPs like mulching, grassing, sediment ponds, inlet sediment traps, etc., that will reduce the total maximum daily load



(TMDL) of sediment in the stream so it can recover. In the United States, impaired streams are placed in a special list called a "303d list" and must be reported to the USEPA with a plan called a TMDL Implementation Plan on the impaired stream segment will be fixed!

A river that is biologically impaired for fish and macro-invertebrates because of sediment get a little more attention from the TMDL Implementation Plan by requiring the construction site of 1-acre or more of disturbed land, located within 1-mile upstream and in the same watershed to design, install and maintain 4 extra BMPs on their SWPPPs. In addition, if a construction site is going to disturb 50-acres or more, NPDES permittees are also required to implement extra 4 extra BMPs because of the large potential pollutant load from 50-acres of graded land that could end up "in the creek"!





#### QUESTION:

So, what should a superintendent do?

#### ANSWER:

*Do what the SWPPP calls for and change it or have the design pro change it as necessary if it doesn't work. Keep up with your record keeping and work on stabilizing your soils first, then controlling the sediment second. In other words,*

*keep the mulch down, stabilize those soils and clean out your BMPs....our future depends on it!*

To learn more about TMDLs [Click this link](#) for a very informative description of our method of cleaning up impaired streams!

## BIG ANNOUNCEMENT for 2015

### **2-DAY**

### THE MS4 COMPLIANCE & ENFORCEMENT CERTIFIED INSPECTOR TRAINING is now a 2-day event

SPEAKERS INCLUDE

**US EPA, GA EPD & MS4 Operators**



MS4 Compliance & Enforcement Certified Inspector



[CLICK HERE to LEARN  
THE DETAILS](#)

DUE TO POPULAR DEMAND, the NPDES Training Institute has made the MS4 CECI classroom only course into a 2-day classroom and field training experience.

In 2014, we trained stormwater professionals representing Alabama, Arizona, California, Georgia, Maine, New Hampshire, Nevada, Tennessee & Texas and the overwhelming vote gathered in our course evaluation forms expressed the need for a 2-day course which will allow more time for the information to sink in and also allow the attendee to apply their newfound knowledge to field situations. Upon completion, you will have the knowledge and tools necessary to perform your duties as an MS4 Compliance and Enforcement Certified



Inspector with a certificate of completion and a certification card credentialed by the NPDES Stormwater Training Institute.

[CLICK HERE TO REGISTER](#)

*Municipalities and private consultants alike love our MS4 CECI training!*



*"Thanks for a great course! I'm able to take this training back to my MS4 and know what to do to begin our compliance and enforcement efforts!" 12-10-14*

*"Large amount of information covered, great handouts, organized presentations, comfortable learning environment!" 12-10-14*

*"I like most the manual with the powerpoints to write notes. Luke was an excellent speaker & instructor." 12-10-14*

*"The videos with equipment demonstrations really helped make it practical" 2014*

*"The EPA and EPD discussions made the course practical and helped me understand how to properly regulate water quality problems in my MS4", 2014*

*"I liked the interaction with the instructor, updated information and all the new resources given out", 2103*

*"The instructor was very knowledgeable, patient and really did a good job of answering questions", 2013*



*In addition to the material you receive, after passing your exam, you will receive a Certificate of Completion worth 8 CEUs and a MS4 CECI photo ID card.*

*Call us at 678-469-5120 and speak with our helpful staff and/or email us at [Needinfo@MS4training.com](mailto:Needinfo@MS4training.com)*



**CLEAN WATER ENFORCEMENT**

**USEPA FINES COSTCO WHOLESALE CORPORATION**

**\$20,660** for unauthorized release of sediment into tributaries and directly into Lake Lanier.

Under the Permit, developers and construction companies must design, install and maintain stormwater controls to prevent construction area runoff from polluting nearby streams and lakes. Without these controls, pollutants typically associated with construction sites, such as sediment, oil and grease, and concrete washout can enter nearby waterways.

**TO READ THE LIST OF VIOLATIONS, [CLICK HERE!](#)**



## THE INSIDE SCOOP on USEPA's COMPLIANCE FINDINGS & ENFORCEMENT ACTIONS



While a prolonged regional drought is devastating for the millions of people relying on clean abundant water, a superintendant is more than likely ecstatic about being in a drought when he's responsible for erosion and sediment control on his project. Why you ask, because when it doesn't rain his project there's no downstream impact to draw attention to not properly designing, installing and maintaining best management practices (BMPs)!

When the USEPA gets involved in an enforcement action, it is surprising the violations that could have easily been avoided.

See below.....





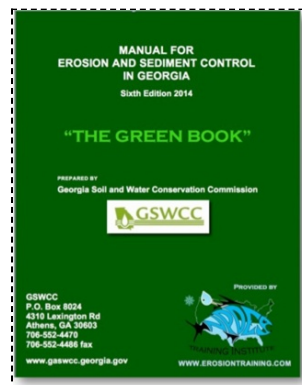


## The 6th Edition Green Book

Printed and Bound

\$45 plus S&H

Fully Updated



Buy Now



### THE NEW MANUAL SET's THE BMP TESTING STANDARDS NATIONALLY

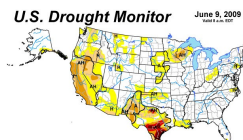
with support of the USEPA, AASHTO, International Erosion Control Association (IECA), Water Environment Federation (WEF) & over 19 different states!

**READ THE NPDES TRAINING NEWSLETTER JULY UPDATE  
FOR A FULL HISTORY AND EXPLANATION OF THIS STATE  
OF THE ART MANUAL!**

(If you would prefer to download a free copy [CLICK HERE](#))



International Erosion  
Control Association  
**JOIN TODAY**



**US Drought Monitor**

## **WONDERING ABOUT ONLINE RENEWAL INSTEAD OF CLASSROOM?**



**ONLINE RENEWAL IS EASY!**

**[CLICK HERE for a  
Quick Video Demonstration](#)**

**LEVEL 1A, LEVEL 1B and LEVEL II  
ONLINE RECERTIFICATION !**

**CLASSROOM COURSE SCHEDULE**

**[SIGN UP FOR A COURSE](#)**

**[EROSIONTRAININGONLINE.COM](http://EROSIONTRAININGONLINE.COM)**



Like us on Facebook

View our profile on **LinkedIn**



**PROUD TO BE ON AGC's NATIONAL ENVIRONMENTAL  
STEERING COMMITTEE**

## **COMPLIANCE TOOL BOX**



**NPDES Training Institute**  
"Training That Helps It All Make Sense!"



**[GREEN BOOK \(Manual for E&SC in Georgia - New 2014\)](#)**

**[GREEN BOOK Video Presentation](#)**

**[GREEN BOOK Update Presentation Free Download](#)**

**[GREEN BOOK Transition Period Guidance \(NOW CANCELLED\)](#)**





Metropolitan North  
Georgia Water Planning

[2013 NOI & NOT Forms](#)

[2013 FACT SHEET - NPDES General Permit for Construction \(GA\)](#)

[2013 FACT SHEET ADDENDUM - NPDES General Permit for Construction](#)

[2013 GAR100001 - NPDES GENERAL PERMIT - STAND ALONE](#)

[2013 GAR100002 - NPDES GENERAL PERMIT - INFRASTRUCTURE](#)

[2013 GAR100003 - NPDES GENERAL PERMIT - COMMON DEVELOPMENT](#)

[WHO NEEDS TO BE CERTIFIED in GEORGIA - FACT SHEET](#)

[March 5, 2012 Memo for Projects Less than 1-Acre](#)

[2012 303d LIST - GEORGIA](#)

[2007 EPD GUIDANCE TO SWCC DISTRICTS FOR PLAN REVIEWS](#)

[CITY OF ATLANTA - Forms, Checklists & CAD Sample Plans](#)

[2009 MODEL ORDINANCE \(Read Page 7, paragraph C\)](#)

[BUILDING & RENOVATING A POND in GEORGIA](#)

[CONCRETE WASHOUT PROCEDURES](#)

[TMDL IMPLEMENTATION PLANS](#)

[STREAMBANK & SHORELINE RESTORATION in GEORGIA](#)

[GESA Exemption #8](#)

[BUFFER VARIANCE REQUIREMENTS FOR DAMS](#)



## MORE STORMWATER CONFERENCES & TRAINING EVENTS



**S.T.R.E.A.M SEMINAR - WAS A HUGE SUCCESS. OVER 220 Stormwater professionals attended the conference, many of which said it was the best stormwater seminar they've ever attended. Thanks to all who made it happen!!!**

[SOUTHEAST STORMWATER ASSOCIATION](#)



## UPCOMING CONFERENCES



## GEORGIA ASSOCIATION OF WATER PROFESSIONALS UPCOMING CONFERENCES



## GRWA UPCOMING CONFERENCES



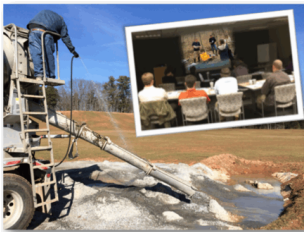
## WEF - WATERS WORTH IT!



## IECA SE Chapter UPCOMING CONFERENCES

## HERE's TO TIGHT LINES & GOOD TIMES in Clean Abundant Water!!!

***It's important that we sacrifice a little today to give our kids an equally great place to live, swim, fish, and hunt tomorrow!  
There is a lot happening with water regulations that affect a diverse community of public and private entities. If you have areas of interest that you would like included in this newsletter, please contact us at 678-469-5120.***



T. Luke Owen, PG  
President/Principal  
Trainer and Consultant

[www.npdestraining.com](http://www.npdestraining.com)  
[www.ms4training.com](http://www.ms4training.com)  
[www.erosiontraining.com](http://www.erosiontraining.com)  
[Luke@npdestraining.com](mailto:Luke@npdestraining.com)



<https://www.linkedin.com/in/npdestraining>

