



#### IN THIS ISSUE

##### [ONLINE COURSES](#)

[MS4 CECI Certification](#)

[TOOL BOX - NOIs, NOTs & PERMITS](#)

[GUARANTEED TRAINING!](#)

[UPCOMING EVENTS!](#)

[CLEAN WATER VIOLATIONS](#)

#### Quick Links

[CHECK EXAM RESULTS](#)

[COURSE SCHEDULE](#)

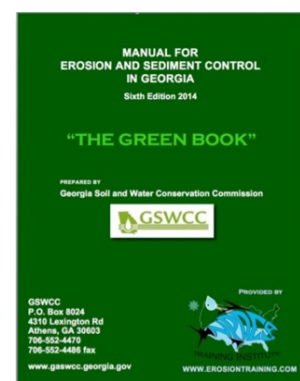
[NEWSLETTER ARCHIVES](#)

## Do you want some **FREE EDUCATION**, and also learn about the new "Green Book"?

We have taken the Georgia Soil Water Conservation Commission's presentation (that they and their Technical Advisory Committee developed), and spiced it up with photos, narration, and a tad more content to teach people about the existing changes to the "Green Book".

[There is no charge for watching the presentation.](#)

Although some have said we should charge for the course, we believe it's more important to get the word out into the hands of those who are curious. Just [click on this link](#) or the Green Book above, log in with your email address, and start watching!



I think you'll agree the Georgia Soil and Water Conservation Commission and the Technical Advisory Committee did a phenomenal job in putting together a manual that is said by many to be the best E&S Manual ever published in our country! I am personally grateful for their hard work. I hope you enjoy the presentation!

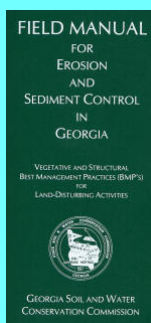
## ARE YOU A TERTIARY PERMITTEE or NPDES Inspector for lots within a common development?)

Quite a few builders who have bought lots in partially developed subdivisions, have asked about the new compliance requirements for Tertiary Permittees. So here's a brief summary.....

*First of all, a Tertiary Permittee is a lot owner in a subdivision built on or after the year 2000, where the Primary Permittee (the individual or company who built the subdivision) is no longer around. (Read the GAR100003 NPDES Permit for the actual definition). In other words, if you're a builder in a partially developed subdivision, the over all development no longer has 1 entity responsible for the turbidity leaving the stormwater treatment facility, you are now responsible for what leaves your land disturbance according to your plan. We've been getting a lot of questions lately from individual builders purchasing lots within a formerly bankrupted subdivisions (otherwise*



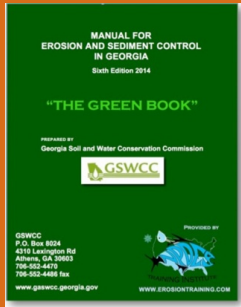
Order Your Field Manual Today!



View our videos on 

**Pay Now**

**Order Your Hard Copy of  
the Green Book**



known as common developments) as to what they should do for filing permit applications. The most common question has been..... "Do I need to contact the Georgia Environmental Protection Division (GA-EPD) with a permit application" and if so, when will they get back to me with a



permit?"

**Answer:** First of all, the GA-EPD will not be getting back to you with a permit. The NPDES General Permitting program calls for a builder to download a form called a Notice of intent (NOI) as well as the NPDES General Permit that has the rules to follow, written in it. Part IV is of particular interest to

builders because it lays out the specific inspection and rainfall measuring requirements identified in the NPDES program.

Installation and Maintenance of the silt fence, mulch, grassing and other best management practice (BMP) requirements are more specifically layed out in the

[Georgia Green Book](#) and/or [Field Manual](#) (which we give out for free in our initial classes). The NOI that must be sent to the GA-EPD District Office is called a [Tertiary NOI](#).

Download the form, fill it out correctly, and send it to the GAEPDs District Office for coverage under the [GAR100003 General Permit](#). You will need to contact the local county or city (known as the Local Issuing Authority (LIA)) and also submit your permit application paperwork to them (including but not limited to the NOI, ES&PC Plan, Plan Review Checklist, fees, etc). Instructions for how to fill out the NOI are in the file when you download it.

[Click here](#) for a very helpful document that GA EPD prepared specifically for Tertiary Permittees to help identify the most efficient way to permit your particular project. Hope that helps!

**Georgia Dumps Sewage into Florida  
Rivers..... and FL residents  
not happy about it!**



The City of Valdosta, Georgia has reported over one-million gallons of untreated wastewater spilled into local waterways and onto local streets. It's the third time since 2009 that the same Valdosta waste water plant has contaminated Florida waters. In fact, it's nearly a year to the day since the last time the plant unleashed a flood of sewage on the Suwannee and Withlacoochee Rivers that kept residents downstream from fishing, swimming and boating in the rivers. The stormwater and sewage combination was overflowing from several manholes yesterday in local neighborhoods.



[MORE](#)



**FISH WITH KIDS!**



*As our population growth continues to stress our aging water infrastructure, our job as water professionals is more critical now than ever before if we don't want to follow China's example of polluted rivers and groundwater.*

## CHINA'S POISONOUS WATERWAYS

April 4, 2014



DEAD HOGS are the tip of the Pollutant Iceberg  
for China's Rivers

BEIJING - Over the past few years, trips back to my home village, Huaihua Di, on the Lanxi River in Hunan Province, have been clouded by news of deaths - deaths of people I knew well. Some





were still young, only in their 30s or 40s. When I returned to the village early last year, two people had just died, and a few others were dying. *Water Pollution from factories, human waste and stormwater is the problem!*

My father conducted an informal survey last year of deaths in our village, which has about 1,000 people, to learn why they died and the ages of the deceased. After visiting every household over the course of two weeks, he and two village elders came up with these numbers: Over 10 years, there were 86 cases of cancer. Of these, 65 resulted in death; the rest are terminally ill. Most of their cancers are of the digestive system. In addition, there were 261 cases of snail fever, a parasitic disease, that led to two deaths.

[MORE](#)

---

## **CONSERVATION EDUCATION**

**"FOR THE OUTDOORSMAN IN ALL OF US!"**

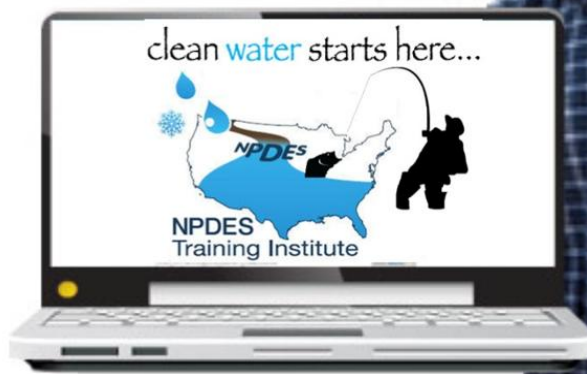
### **We are ON TOP of the New Regulations**

2014 EROSION AND MS4 TRAINING COURSES ARE **UPDATED** TO GEORGIA NPDES PERMITS AND STATE WATER REGULATIONS!



- > Convenient
- > Easy to Use
- > Available 24/7

[\*\*GEOLOGICONLINE.COM\*\*](http://GEOLOGICONLINE.COM)



*Click Here for*

**[ONLINE RECERTIFICATION TRAINING!](#)**

**[CLASSROOM COURSE SCHEDULE](#)**

**[SIGN UP FOR A FOR A COURSE](#)**

**[EROSIONTRAININGONLINE.COM](http://EROSIONTRAININGONLINE.COM)**



Like us on Facebook

View our profile on **LinkedIn**



**PROUD TO BE AGC's STORMWATER  
TRAINING PROVIDER**

## MS4 CECI Seminar

(MS4 Compliance & Enforcement  
Certified Inspector)

[Click Here](#) or on the photo below,  
or call Rita at 678-469-5120 to  
reserve your spot for the  
popular MS4 CECI  
course!

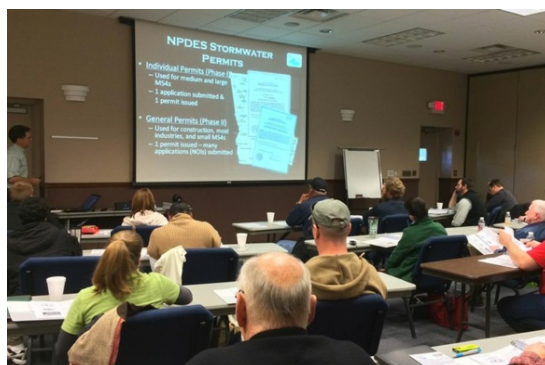
If you want to know how  
to conduct a site  
inspection as an MS4  
Inspector, take our  
class!

You'll be glad you did, or  
your money back! After  
taking the [MS4 CECI  
course and passing the  
exam](#), you will receive a:

1- MS4 CECI Certification Card (with your photo), and

2 - Certificate of Completion.

[CONTACT US](#) anytime if you have  
questions or need more  
information!



-----  
This is what people are saying



*Municipalities and private consultants alike  
love the MS4 training mostly because it takes  
the mystery away from their responsibilities and  
gives specific direction on how to perform  
their duties!*

*"Great training! I feel like I know  
what to do now with my inspections, both for illicit*

*discharges and construction sites."*

*"I liked the interaction with the instructor, updated information and all the new resources given out."*

*"The instructor took the time to make sure we understood our material. I feel like he really cares about what he's training!"*

*"Excellent Course! Video's and Interaction with Instructor!"*

## COMPLIANCE TOOL BOX



[GREEN BOOK \(Manual for E&SC in Georgia - New 2014\)](#)

[GREEN BOOK Update Presentation Free Download](#)

[GREEN BOOK Transition Period Guidance \(NOW CANCELLED\)](#)

[2013 NOI & NOT Forms](#)

[2013 FACT SHEET - NPDES General Permit for Construction \(GA\)](#)

[2013 FACT SHEET ADDENDUM - NPDES General Permit for Construction](#)

[2013 GAR100001 - NPDES GENERAL PERMIT - STAND ALONE](#)

[2013 GAR100002 - NPDES GENERAL PERMIT - INFRASTRUCTURE](#)

[2013 GAR100003 - NPDES GENERAL PERMIT - COMMON DEVELOPMENT](#)

[WHO NEEDS TO BE CERTIFIED in GEORGIA - FACT SHEET](#)

[March 5, 2012 Memo for Projects Less than 1-Acre](#)

[2012 303d LIST - GEORGIA](#)

[2007 EPD GUIDANCE TO SWCC DISTRICTS FOR PLAN REVIEWS](#)

[CITY OF ATLANTA - Forms, Checklists & CAD Sample Plans](#)

[2009 MODEL ORDINANCE \(Read Page 7, paragraph C\)](#)

[BUILDING & RENOVATING A POND in GEORGIA](#)

[CONCRETE WASHOUT PROCEDURES](#)

[STATE WATERS \(CCouch Ltr 2004\)](#)

[LOCAL ISSUING AUTHORITIES - NEW FEB 2012 List](#)

[ALTERNATIVE BMP GUIDANCE DOC](#)

[TMDL IMPLEMENTATION PLANS](#)



## STREAMBANK & SHORELINE RESTORATION in GEORGIA

### GESA Exemption #8

## BUFFER VARIANCE REQUIREMENTS FOR DAMS

---



**WE GUARANTEE OUR TRAINING and DO NOT CHARGE YOU FOR A RETEST, IF YOU RETURN!**

1. Want some feedback from our past students? Read reviews from our **"Raving Fans"**
2. **ONLINE OSHA COURSES FOR CONSTRUCTION** (to name a few):
  1. Hazard Communication
  2. Heat Stress
  3. Lockout-Tagout Awareness
  4. Hearing Protection
  5. Personal Protective Equipment (PPE)
3. **We are here to Help YOU!**  
We can set you up so you can perform your own inspections and water sampling, or we can do them for you. We can give you a killer deal on an EPA Compliant **Hanna Turbidimeter**. We can also help even if it's just answering a question or two.

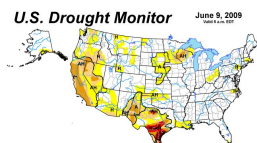


Contact us anytime at 678-469-5120  
or [info@npdestraining.com](mailto:info@npdestraining.com)





International Erosion  
Control Association  
**JOIN TODAY**



**US Drought Monitor**



## STORMWATER CONFERENCES & TRAINING EVENTS

[SOUTHEAST STORMWATER ASSOCIATION \(SESWA\)](#)  
(UPCOMING CONFERENCES)

[GEORGIA ASSOCIATION OF WATER PROFESSIONALS](#)  
(UPCOMING CONFERENCES)

[GEORGIA RURAL WATER ASSOCIATION \(GRWA\)](#)  
(UPCOMING CONFERENCES)

[INTERNATIONAL EROSION CONTROL ASSOCIATION \(IECA\)](#)  
SE CHAPTER (UPCOMING CONFERENCES)

[WATER ENVIRONMENT FEDERATION](#) - WATERS WORTH IT

---

## CLEAN WATER VIOLATIONS



James and Darlene Spies knew only one thing when they had a bulkhead built to protect their St. Simons Island property from erosion: Glynn County said they could do it.  
The Georgia EPD, however, later disagreed and fined them \$10,000.

The dispute includes a simple question of whether the county or state was right about whether what is known as wrested vegetation - which both a county ordinance and state law use as a starting point for measuring where structures can be built near marshes - was present.

### [MORE](#)

*Without knowing more about his case, it sounds to me like it probably involves the issue of a "Marsh Jurisdictional Line" (MJL) not wrested vegetation. If that's true, cases like this do not allow a Local Issuing Authority to determine a MJL, rather the Coastal Resources Division from the Georgia Department of Natural Resources takes the reigns. Hmmm, I wonder how this unfortunate*



*situation could have been avoided?*

The following enforcement action was issued by GAEPD.

**Facility:** Hamilton Landing, Dudley Lane, Lot 144/St Simons Island; order issued to Mr. James and Mrs Darlene Spies  
**Location:** Glynn County  
**Order Number:** EPD-WQ-E&S-6005  
**Date of Issue:** March 27,2014  
**Cause of Order:** Land disturbing activity within 25 ft buffer without variance  
**Requirement(s) of Order:** Immediately cease work on site except installation/maintenance of temporary or permanent erosion/sediment controls, and implementation of approved corrective action plan; stabilization features already in place may remain if Mr. & Mrs. Spies complies with all conditions of order; install/maintain all necessary E&S controls required until corrective action plan is completed; provide new buffer CAP prepared by expert in coastal vegetation and the Coastal Stormwater Supplement; CAP shall include plan to restore buffer areas with native vegetation, time schedule for buffer restoration including vegetation replanting and plan to ensure stormwater run-off(fertilizers, pesticides etc.) does not flow untreated directly into surface water; upon approval, implement plan

**Settlement Amount:** \$5000.00

A copy of a single executed order will be provided at no charge. Additional copies are available at 25 cents per page prepaid. To order copies, call 1-888-373-5947 (404/657-5947 inside Atlanta dialing area).

-----  
**MS4 municipality pays a BIG FINE!**

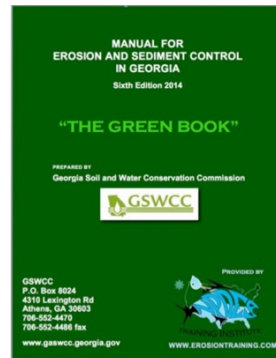
Clark County will pay \$3 million over six years for violating their MS4 NPDES Permit, according to terms of a settlement announced Wednesday that ends years of litigation. The county will also pay \$600,000 to the plaintiffs to cover attorney fees. Although this is Clark County, Washington it has implications nationwide!

The \$3 million will be paid to an independent third party, the Lower Columbia Fish Recovery Board, which will "oversee projects to protect and restore Clark County rivers and streams harmed by stormwater pollution".



## MORE

Green Book - Printed and Bound



**Buy Now**



*HERE's TO TIGHT LINES &  
GOOD TIMES i n Clean  
Abundant Water!!!*

**Respecting our neighbors  
downstream** is the **BIG  
REMINDER!** It's important that we  
sacrifice a little to give our future  
generations an equally great place to  
live, fish, and hunt!

***There is a lot happening today with water regulations that  
affect a diverse community of public and private entities. If  
you have areas of interest that you would like included in  
this newsletter, please contact us at 678-469-5120.***

**Sincerely,**  
NPDES  TRAINING  
INSTITUTE



T. Luke Owen, PG  
President/Principal Trainer and Consultant  
[www.npdestraining.com](http://www.npdestraining.com)  
[www.ms4training.com](http://www.ms4training.com)  
[www.erosiontraining.com](http://www.erosiontraining.com)  
[Luke@npdestraining.com](mailto:Luke@npdestraining.com)

