



November 2018 Newsletter

NPDES Training Institute



"Training That Helps It All Make Sense!"



www.npdestraining.com
www.NPDEstraining.com
www.EROSIONtraining.com
www.MS4Training.com

HAPPY THANKSGIVING

Means a Good Job AND Good Water Quality!

WHAT MAKES AMERICA'S WATER QUALITY SO MUCH BETTER?



A country that has both good paying jobs and good water quality, makes people want to live in it. Our ability to profit from our hard work coupled with improving and maintaining surface water quality, are **TOP CONTENDERS for the #1 Spot of what makes America, the Beautiful!** "Together, they are an integral part of the fabric that makes America a country that is truly beautiful and capable of giving it's citizens a quality of life, worth living". Without either one of them, America would be no different than the countries many people are fleeing from today. Many do not realize that in America, we invest back into our environment mostly through government programs, that unfortunately few people know or understand. We pay because we can afford to, with our good paying jobs. That said, a good job is only half the equation to living a life that is enjoyable. The other half involves spending our hard earned money on fun things at stores like Bass Pro Shops, Adventure Outdoors and Academy Sports to name a few. If you doubt that, just drive to a

Bass Pro Shop store this weekend; sit in your car for a minute and witness the hundreds, if not thousands of people spending their money on a fishing poles, reels, lures, and fish finders, not only for themselves, but also as gifts for that special someone they hope will share their joy of playing in America's environment.

Spreading the good news of America's Point Source NPDES permitting program is my chosen profession; and it stems from my love of America, a country that has provided myself, my family, and friends an incredible quality of life. A country I served as a United States Marine and a country that continues to give back much more than I have given it. Today, I've learned that my quality of life is directly dependent on both (1) the money I get from my job, and (2) the water quality I wish to enjoy. Without either one of them, the lives of over 330 million Americans would suffer greatly.

THANKSGIVING in AMERICA must be more today than a mere nod of appreciation. Supporting your local [municipal separate storm sewer systems \(MS4's\)](#) can go along ways in demonstrating your sincere appreciation for water quality. Everyone, including our political leaders, must support properly managed MS4s. MS4s Matter in America like never before!

This Thursday as you eat that turkey, ham, keto diet or vegan meal; I hope you decide to express your thankfulness for America by deciding to support watershed protection in 2019.

Happy Thanksgiving!



MS4s Matter!

IN THIS ISSUE

[6th EDITION GREENBOOK](#)

[The NEW GREEN BOOK and
FIELD MANUAL](#)

[The GREENBOOK Corner](#)

[MS4 CECI Course Registration](#)

[ONLINE COURSES](#)

[GSPE](#)

Quick Links

[CHECK EXAM RESULTS](#)

[COURSE SCHEDULE](#)

[BUY THE NEW 2016 FIELD
MANUAL](#)

[Download a Free Copy.](#)

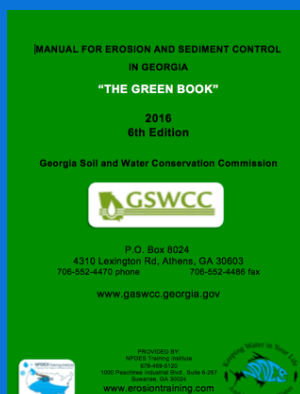


View our videos on 

Buy Now



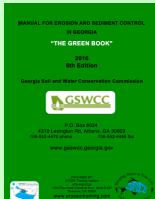
[Â CLICK HERE TO BUY A
2016 GREEN BOOK](#)



GREENBOOK CORNER

The Manual for Erosion and Sediment Control in Georgia

Because of requests from you, our subscribers, we're launching the GREENBOOK CORNER, a discussion of specific BMPs of interest.



Dc - Stream Diversion Channel

Always check the Georgia Georgia EPD Watershed Protection Branch for buffer variance requirements. Also check with the Army Corp of Engineers when dredge or fill operations will occur within the stream channel.

PURPOSE

To protect the streambed from erosion and allow work "in the dry".

CONDITIONS

Temporary stream diversion channels shall be used only on following streams with a drainage area less than one square mile. Structures or methodology for crossing streams with larger drainage areas should be designed with methods that more accurately define the actual hydrologic and hydraulic parameters that will affect the functioning of the structure. A Stream Buffer Variance from the GA EPD may be required, unless specifically exempt from the Act and all other appropriate agencies, including the U.S. Army Corps of Engineers, must be contacted to ensure compliance with other laws.

PLANNING CONSIDERATIONS

Utilities or roads frequently cross and impact live streams creating a potential for excessive sediment loss into a stream by both the disturbance of the approach areas and by the work within the stream bed and banks.

DEFINITION

A temporary channel constructed to convey flow around a construction site while a permanent structure is being constructed in the stream channel.



[Dc - Stream Diversion Channel](#)

MS4CECI COURSES

MS4 Compliance & Enforcement Certified Inspector
The "OFFICIAL" MS4CECI Course

[CLICK HERE FOR MS4CECI ONLINE RECERTIFICATION](#)

OR
DOWNLOAD A
FREE COPY [here!](#)

AS OF JULY 1, 2016
ONLY THE 2016
EDITION GREENBOOK
CAN BE USED in
GEORGIA.

Proud Member of ...

Greater
Atlanta
Home Builders
Association

WATERWATCHPRO
SPECIAL YEAR-END OFFER FOR
NPDES TRAINING INSTITUTE SUBSCRIBERS!

1. GET THE WATERWATCH PRO APP

2. ENTER COUPON CODE "NPDES"

3. PAY NO MONTHLY MAINTENANCE FEE
FOR THE FIRST 6 MONTHS WHEN YOU UPGRADE
FROM FREE TRIAL TO PAID ACCOUNT - A \$69 SAVINGS!

HURRY - LIMITED TIME OFFER ENDS 12/31/2018!

An easy way to meet your
NPDES daily rainfall recording
requirement.



**American Sports
Fishing Association**

Read About How
ASFA Works To Help
The American
Angler



This course meets the MS4 NPDES Permit Green Infrastructure
Requirement for Training

2018

MARIETTA, GEORGIA
December 6-7

2019

Contact us at rita@ndpestraining.com or calling 678-469-5120
to register for the following dates

MS4CECI 2-Day Course Marietta, Georgia

- February 21 - 22
- May 20 - 21
- August 19 - 20
- November 18-19

MS4CECI Recertification

Marietta, Georgia

- February 13
- May 17
- August 16
- November 14

"THE BEST STORMWATER CLASS I'VE EVER ATTENDED!"

***"The Instructor was knowledgeable and experienced
with a lot of examples".***

***"Very practical, I've learned & received more information for
my job than any other class I've ever taken.***



**The
Weather
Channel**



**smart
WATERSHEDS**
FOR CLEAN RIVERS AND STREAMS



Thank You!"

CALL RITA @

**678-469-5120 for help registering.
www.MS4stormwatertraining.com**



Catching Urban Stormwater

Australia has already started to test a network of drainages with mesh so that plastics and other pollutants do not reach rivers or sea.

For this to work here in the USA, maintenance means first and foremost, public education & outreach to prevent trash from entering the drainages, and second, Pubic Works Departments having dedicated staff available to maintain these systems.



What do you think? Is this approach practical for your MS4? Are they worth testing?

RECERTIFICATION IN-CLASSROOM or ONLINE "FOR THE OUTDOORSMAN IN ALL OF US!"

- > Convenient
- > Easy to Use
- > Available 24/7

GEOLOGICONLINE.COM





Click Here for

ONLINE RECERTIFICATION CLASSROOM COURSE SCHEDULE

REGISTER FOR A COURSE

EROSIONTRAININGONLINE.COM

 Like us on Facebook

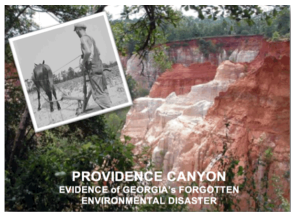
View our profile on 



ASSOCIATED GENERAL CONTRACTORS

NEED HELP with
SEDIMENT BASINS?
CALL JIM SPOTTS
770-216-9514

southeastenvironmentalconsultants.com



SAVE 10%



ALL ONLINE &
CLASSROOM
COURSES

USE
DISCOUNT COUPON
CODE
"THANKYOU2018 "

*Register for
a Course*

Offer Expires 12/15/
18

COMPLIANCE TOOL BOX



Local Government NPDES Enforcement & Plan Review Authority

[GREEN BOOK \(Manual for E&SC in Georgia - New 2016\)](#)

[GREEN BOOK Video Presentation](#)

[WHO NEEDS TO BE CERTIFIED in GEORGIA - FACT SHEET](#)

[March 5, 2012 Memo for Projects Less than 1-Acre](#)

[NEW 2014 303d LIST \(Georgia\) - for use as of July, 2016](#)

[EPD GUIDANCE TO SWCC DISTRICTS FOR PLAN REVIEWS](#)

[CITY OF ATLANTA - Green Infrastructure Information, forms, etc.](#)

[BUILDING & RENOVATING A POND in GEORGIA](#)

[TMDL IMPLEMENTATION PLANS](#)

[STREAMBANK & SHORELINE RESTORATION in GEORGIA](#)

[GESA Exemption #8](#)

[BUFFER VARIANCE REQUIREMENTS FOR DAMS](#)

INVITATION TO JOIN

THE GEORGIA SOCIETY OF PROFESSIONAL ENGINEERS

[CLICK HERE](#) to learn more about GSPE.


Betty Jean Jordan, PE
Executive Director
Georgia Society of Professional Engineers

165 Courtland Street, Suite A 235
Atlanta, GA 30303
(404) 840-2542
<https://www.facebook.com/gspeorg/>






**We are proud to have Betty Jean as one of our
Stormwater Trainers!**

**[Click here](#) to register for your Level II Certification or
Recertification Course for designers and reviewers!**



**SPECIAL YEAR-END OFFER FOR
NPDES TRAINING INSTITUTE SUBSCRIBERS!**

**1. GET THE WATERWATCH PRO APP**



**2. ENTER
COUPON CODE
'NPDES'**

**3. PAY NO MONTHLY MAINTENANCE FEE
FOR THE FIRST 6 MONTHS WHEN YOU UPGRADE
FROM FREE TRIAL TO PAID ACCOUNT - A \$60 SAVINGS!**

HURRY – LIMITED TIME OFFER ENDS 12/31/2018!

***HERE'S TO TIGHT LINES & GOOD TIMES
in Clean Abundant Water!!!***



We, at the NPDES Training Institute, work hard for you, the people in our country that serve the public everyday in their jobs to build America strong and regulate the integrity of our nations urban watersheds!

We must ALWAYS remember that Freedom and Liberty are not free. People have sacrificed their lives and are sacrificing their lives today to give us what we so often take for granted!

Respecting our neighbors downstream and the fish trying to live in our urban watersheds is more important now than ever! Respecting those downstream from our actions is what America is all about, and it's compliance with NPDES Permits that prove our respect.



SEMPER FI!



T. Luke Owen, PG MS4CECI
President, Principal Consultant

www.npdestraining.com

www.ms4training.com

tlowen@npdestraining.com

678-469-5120