



What's the value of clean water to you?

If a fish could talk, what would it say?

Point sources of pollution originally killed American Rivers like the Cuyahoga, Nashua and Chattahoochee Rivers to name a few, only decades ago. The USEPA defines a



NON-POINT SOURCE POLLUTION

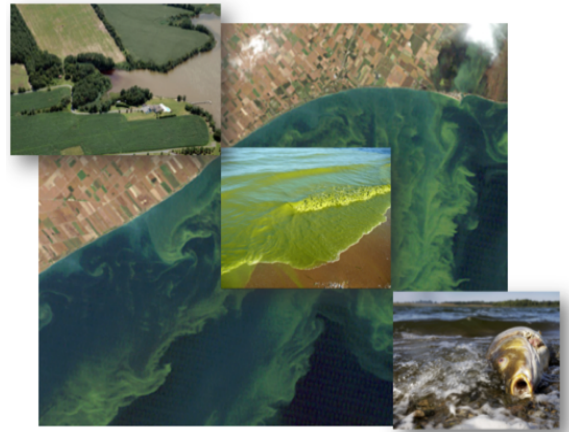
"Point Source" as any discernible, confined and discrete conveyance, including but not limited to any pipe, ditch, channel, tunnel, conduit, well, discrete fissure, container, rolling stock, concentrated animal feeding operation, or vessel or other floating craft, from which pollutants are or may be discharged. This term does not include agricultural storm water discharges and return flows from irrigated agriculture.

Today however, IT'S NOT **point sources of pollution that are polluting and killing aquatic habitat**it's the **non-point sources** of pollution often caused by hard working American's (farmers and urban residents) that un-intentionally pollute someones' water downstream.

The term "nonpoint source" is defined to mean any source of water pollution that does not meet the legal definition of "point source" in the Clean Water Act.

While most American's overwhelmingly voted for clean water in 1972, how would we vote today? How

valuable is clean water is to you?



IN THIS ISSUE

[QUESTIONS & ANSWERS](#)

[HELPFUL LINKS](#)

[ONLINE COURSES](#)

[USEPA SUED, AGAIN!](#)

[WATER WARS UPDATE](#)

[GUARANTEED TRAINING!](#)

[TOOL BOX - NOIs, NOTs & PERMITS](#)

[UPCOMING EVENTS!](#)

Quick Links

[CHECK EXAM RESULTS](#)

[COURSE SCHEDULE](#)

[NEWSLETTER ARCHIVES](#)

CLICK HERE TO PURCHASE
THE FIELD MANUAL

Buy Now



NOTE: The 2002 version of
the FIELD MANUAL is the only
one. It is NOT THE
GREENBOOK.

**RECERTIFICATION
IN CLASSROOM or ONLINE**
"FOR THE OUTDOORSMAN IN ALL OF US!"

**The "Most Effective Construction
Stormwater Training Ever!"**

**We are ON TOP
of the New Regulations!**

- > Convenient
- > Easy to Use
- > Available 24/7

GEOLOGICONLINE.COM



Click Here for

ONLINE RECERTIFICATION TRAINING!

CLASSROOM COURSE SCHEDULE

SIGN UP FOR A FOR A COURSE

EROSIONTRAININGONLINE.COM

FIELD MANUAL FOR EROSION AND SEDIMENT CONTROL IN GEORGIA

VEGETATIVE AND STRUCTURAL
BEST MANAGEMENT PRACTICES (BMP'S)
FOR
LAND-DISTURBING ACTIVITIES



GEORGIA SOIL AND WATER
CONSERVATION COMMISSION

View our videos on **YouTube**



Like us on Facebook

View our profile on **LinkedIn**

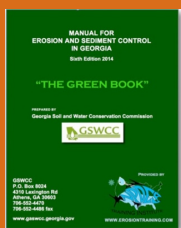


**PROUD TO BE AGC's
STORMWATER TRAINING PROVIDER**

Buy Now



ORDER YOUR HARD COPY OF
THE NEW GREENBOOK
TODAY!!



PLEASE NOTE: THIS IS
NOT THE FIELD MANUAL!

USEPA Sued AGAIN for Not Enforcing Clean Water Rules

The EPA and the NRDC agreed to a settlement agreement where EPA will publish a notice of intent to propose rulemaking by 12/17/15 and publish a final rule by 11/17/16, regarding the Phase 2 MS4 permits. The Agreement stems from a 2014 lawsuit seeking to enforce the provisions of a 2003 order finding that the general permitting scheme of EPA's Phase 2 MS4 rules allows small MS4s to design stormwater pollution control programs without adequate regulatory and public oversight, and violates the CWA because it does not require EPA to review the content of the MS4's Notices of Intent to discharge.



[**MORE**](#)

The NEW GREEN BOOK is Almost Out!

Here's what's
happening!

The newly revised
2016 Edition of the
Manual for Erosion
and Sediment
Control (Green Book)

is just about to
launch. It has been
revised based on comments received during the public comment



CONSERVATION CORNER

At the NPDES Training
Institute we believe **BALANCE**
is the key to America's future
quality of life. Keeping
industry, construction and

environmental protection strong in America is vital. Membership in organizations that promote environmentally responsible construction and industrial economic sectors as well as organizations that promote environmental protection are awesome groups to join! *Members from the following organizations attend NPDES Training Institute courses, however the NPDES Training Institute does not claim their endorsement!*



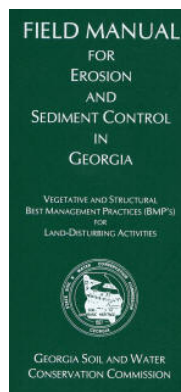
FISH WITH KIDS!

period. To address the comments, the Carl Vinson Institute of Government at the University of Georgia worked with representatives from GSWCC, the Georgia Environmental Protection Division (EPD), and Georgia Department of Transportation (GDOT).

Both, the responses to comments received & the Revised Manual can be found at this link under "Related Items":

<http://gaswcc.georgia.gov/2016-edition-manual-erosion-and-sediment-control>

Following approval by the Erosion and Sediment Control Overview Council prior to December 1, 2015, the revised 2016 Edition of the Manual will become effective on January 1, 2016.



Many are asking, "**Will the state publish an updated Field Manual with the new BMPs in it?**" Today, thousands of construction workers, regulators, design professionals and plan reviewers have a 2002 Field Manual. Since many of the BMPs are called something different, many people want to know what they should do?

Stay tuned, the Georgia Soil and Water Conservation Commission will be diligently working on the updated Field Manual, as soon as the new 2016 Green Book becomes official.

USEPA MUST WAIT TO ENFORCE the NEW WOTUS RULE!

The United States Court of Appeals for the Sixth Circuit has issued a nationwide stay of the [new federal regulation](#) redefining "waters of the U.S." (WOTUS) for the purposes of the Clean Water Act. The U.S. Environmental Protection Agency and U.S. Army Corps of Engineers proposed and then finalized the new regulation in an effort to clarify the scope of the statute's requirements. The questions that lie at the heart of this and several other cases is whether the federal agencies went further than the Clean Water Act statute permits and whether they followed the appropriate procedures. The court's order blocks the implementation of the new rule nationwide and preserves the status quo until the court can decide whether it has jurisdiction over the case and the resulting power to address those legal questions.



[MORE](#)



WE GUARANTEE OUR TRAINING and DO NOT CHARGE YOU FOR A RETEST IF YOU RETURN!

Read reviews from former students and
"Raving Fans"

We are here to Help YOU!



We can set you up so you can perform your own inspections and water sampling, or we can do them for you. Contact us anytime at 678-469-5120 or info@npdestraining.com



MS4 CECI Classroom & Stream Monitoring Course

NEXT CLASS is ALMOST FULL!

DECEMBER 10, 2015



"Straight from the horses mouth"! We have USEPA & state stormwater regulators communicate the most recent information in our NPDES Training Institute courses!

MS4 CECI Training Event

Stormwater professionals and government officials in the business for decades say the MS4 CECI course is the most effective stormwater training course they've ever attended. The MS4 Compliance and Enforcement Certified Inspector (MS4 CECI) credential is highly sought after by federal, state and municipalities as well as consultants from all over the United States!



"This was the Best, most thorough storm water class that I've ever taken."

"Luke has a way of communicating potentially boring & complicated issues in a way that made the class fun and challenging at the same time. Great Course!"

"The instructor took the time to make sure we understood our material. I feel like he really cares about what he's training!"

"Excellent Course! Video's and Interaction with Instructor!"



Upon successful completion of the course and passing the exam, you will receive a Certificate of Completion and a MS4 CECI photo ID card.

Call us at 678-469-5120 and speak with Rita or sign up at ms4training.com.

COMPLIANCE TOOL BOX



[GREEN BOOK \(Manual for E&SC in Georgia - New 2014\)](#)

[GREEN BOOK Video Presentation](#)

[GREEN BOOK Update Presentation Free Download](#)

[GREEN BOOK Transition Period Guidance \(NOW CANCELLED\)](#)

[2013 NOI & NOT Forms](#)

[2013 FACT SHEET - NPDES General Permit for Construction \(GA\)](#)

[2013 FACT SHEET ADDENDUM - NPDES General Permit for Construction](#)

[2013 GAR100001 - NPDES GENERAL PERMIT - STAND ALONE](#)

[2013 GAR100002 - NPDES GENERAL PERMIT - INFRASTRUCTURE](#)

[2013 GAR100003 - NPDES GENERAL PERMIT - COMMON DEVELOPMENT](#)

[WHO NEEDS TO BE CERTIFIED in GEORGIA - FACT SHEET](#)

[March 5, 2012 Memo for Projects Less than 1-Acre](#)



[2012 303d LIST - GEORGIA](#)

[2007 EPD GUIDANCE TO SWCC DISTRICTS FOR PLAN REVIEWS](#)

[CITY OF ATLANTA - Forms, Checklists & CAD Sample Plans](#)

[2009 MODEL ORDINANCE \(Read Page 7, paragraph C\)](#)

[BUILDING & RENOVATING A POND in GEORGIA](#)

[CONCRETE WASHOUT PROCEDURES](#)

[STATE WATERS \(CCouch Ltr 2004\)](#)

[LOCAL ISSUING AUTHORITIES - NEW FEB 2012 List](#)

[ALTERNATIVE BMP GUIDANCE DOC](#)

[TMDL IMPLEMENTATION PLANS](#)

[STREAMBANK & SHORELINE RESTORATION in GEORGIA](#)

[GESA Exemption #8](#)

[BUFFER VARIANCE REQUIREMENTS FOR DAMS](#)



MORE STORMWATER CONFERENCES & TRAINING EVENTS

[SOUTHEAST STORMWATER ASSOCIATION \(SESWA\)](#)
(UPCOMING CONFERENCES)

[GEORGIA ASSOCIATION OF WATER PROFESSIONALS](#) (UPCOMING CONFERENCES)

[GEORGIA RURAL WATER ASSOCIATION \(GRWA\)](#)
(UPCOMING CONFERENCES)

[INTERNATIONAL EROSION CONTROL ASSOCIATION \(IECA\)](#)
SE CHAPTER (UPCOMING CONFERENCES)

[WATER ENVIRONMENT FEDERATION](#) - WATERS WORTH IT!

HERE's TO TIGHT LINES & GOOD TIMES



International Erosion
Control Association
JOIN TODAY



in Clean Abundant Water!!!



Respecting our neighbors downstream is the BIG REMINDER! It's OUR CHILDREN that will be living through decisions we've made today! It's important that we sacrifice a little to give our kids an equally great place to live, swim, fish, and hunt tomorrow!

There is a lot happening today with water regulations that affect a diverse community of public and private entities. If you have areas of interest that you would like included in this newsletter, please contact me at 678-469-5120.

Sincerely,
NPDES TRAINING INSTITUTE

A handwritten signature in blue ink, appearing to read 'T. Luke Owen'.

T. Luke Owen, PG
President/Principal Trainer and Consultant
www.npdestraining.com
www.ms4training.com
www.erosiontraining.com
Luke@npdestraining.com

