



MARCH - 2016

"There are no easy answers, but there are simple answers. We must have the courage to do what we know is morally right."
Ronald Reagan



www.npdestraining.com
www.erosiontraining.com
www.ms4training.com

Are state and local regulators overly aggressive at enforcing land disturbance permits established to protect their watersheds? If you're a land developer paying for the design, installation and maintenance of erosion, sedimentation and pollution control plans (ES&PC Plans) and the fines that accompany improper compliance efforts, you might say "Yes"; but if you're a resident living in a nice house on the lake that fills with sediment every time it rains, you would probably say "NO".



PERMIT COMPLIANCE

Don't forget the two types of violations we're trying to avoid in the construction business....permit violations and water quality violations. Focusing on permit compliance will save your lunch when water quality is violated. How much should a land developer or builder invest into the proper design, installation and maintenance of erosion plans? How much enforcement should a developer get when he doesn't install and maintain stormwater devices on his erosion plan?

LESSONS LEARNED

The Georgia Erosion and Sedimentation Act (GESA of 1975) and the Clean Water Act and respective NPDES Permits were created because there was imbalance and people were not happy with their land and water resource condition. For many years society grew in their dis-

satisfaction about mud in the streets and polluted rivers and lakes. But today, the effectiveness of these laws have caused many to forget what it was like back then before we had regulations.

As a stormwater consultant and training provider, educating and training thousands of people from all over the country, I find that it most often takes damage to a person's health or property (i.e. quality of life) for them care about water quality. States, counties, and cities must have clean water and reservoirs full of water (not mud) to provide a quality of life worth living for their residents. We need it today, our kids & grandkids need it tomorrow, our animals need it, and our fish require it.

by T. Luke Owen



SHORT VIDEO

THE BASICs of a STORMWATER TREATMENT SYSTEM

America has developed an ingenious method of keeping sediment and other pollutants out of our watersheds.

Watch this short 10-minute video that will give you a very basic understanding how a stormwater treatment system designed for a construction site should operate.

[CLICK HERE](#) to watch (immediately following the white board talk Dr. Jim Spotts will feature (for 2 minutes) good and bad BMP installations.



IN THIS ISSUE

[6th EDITION GREENBOOK](#)

[SEDIMENT BASIN CLASS](#)

[ONLINE COURSES](#)

[CWA VIOLATIONS](#)

[WATER QUALITY TOOL BOX](#)

[DRUGGED SALMON](#)

[STORMWATER CONFERENCES
& EVENTS](#)

[GUARANTEED TRAINING!](#)

Quick Links

[CHECK EXAM RESULTS](#)

SEDIMENT BASINS

BAFFLES, RETROFITS & SURFACE SKIMMERS



COURSE SCHEDULE

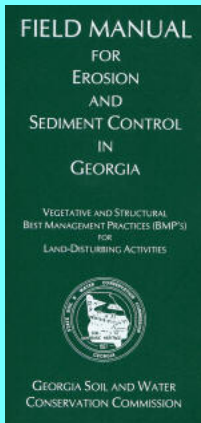
NEWSLETTER ARCHIVES

CLICK HERE TO PURCHASE THE
FIELD MANUAL

Buy Now



NOTE: The 2002 version of the
FIELD MANUAL is the only one.
It is NOT THE GREENBOOK.



View our videos on **YouTube**

Buy Now



**CLICK HERE FOR
YOUR COPY OF THE
2016 GREEN BOOK**

MARCH 28, 2016

[CLICK HERE](#)



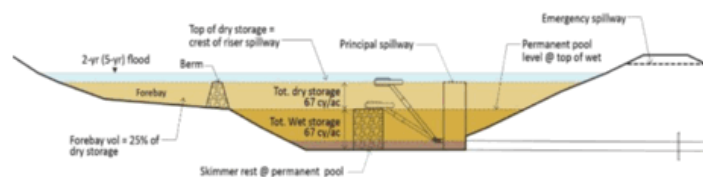
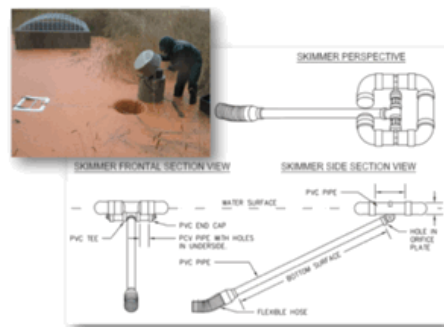
Also serves to **RECERTIFY** your
Level 1A, 1B or II Card

Effective "How To's" for Sediment Basins, Baffles and Skimmers
This course is designed to educate through **classroom and practical field application** the design, installation and maintenance considerations for your water treatment devices.

Dr. James Spotts is recognized internationally as a leading expert in the design, installation and maintenance of erosion and sediment control devices. This course is designed to teach you the latest techniques and considerations for truly effective sediment basin operations.

If you need some clarity when it comes to sediment basin design, installation and maintenance of surface skimmers and baffles, this class will cover everything you **need** to know!

BONUS: A certificate of completion will be provided for each attendee that can be used to fulfill your GSWCC re-certification as well!



Answers to questions covered in the class will include:

- 1) What types of Surface skimming (Sk) devices can I legally install?
- 2) How do I connect the skimmer to the outlet of a temporary basin?
- 3) What kind of baffle designs will work best in various situations?
- 4) Are there resources available to design and construct one myself so I can save money?
- 5) Can I use the **5th Edition Greenbook** instead of the **6th Edition** and not worry about installing a surface skimmer device?

"This class just keeps getting
Better & **BETTER!**"

**RECERTIFICATION
IN-CLASSROOM or ONLINE
"FOR THE OUTDOORSMAN IN ALL OF US!"**

MANUAL FOR EROSION AND SEDIMENT CONTROL
IN GEORGIA
"THE GREEN BOOK"
2016
6th Edition

Georgia Soil and Water Conservation Commission



P.O. Box 8024
4310 Lexington Rd, Athens, GA 30603
706-552-4470 phone 706-552-4486 fax
www.gswcc.georgia.gov



PROVIDED BY:
NPDES TRAINING INSTITUTE
1000 Peachtree Industrial Blvd., Suite 6100
Buckhead, GA 30329
www.erosiontraining.com



- > Convenient
- > Easy to Use
- > Available 24/7

GEOLOGICONLINE.COM



Click Here for

[ONLINE RECERTIFICATION TRAINING!](#)

[CLASSROOM COURSE SCHEDULE](#)

[SIGN UP FOR A FOR A COURSE](#)

EROSIONTRAININGONLINE.COM

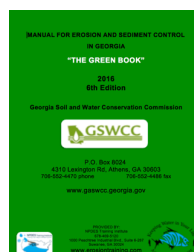


Like us on Facebook

View our profile on **LinkedIn**



PROUD TO BE AGC's
STORMWATER TRAINING PROVIDER



TO ORDER your [NEW 6th EDITION GREENBOOK](#) [Click Here](#)

or

DOWNLOAD A [FREE COPY](#) [here!](#)



Video to the 2016 Changes to the
GREEN BOOK

CLEAN WATER ACT VIOLATIONS

PRISON and FINES

Tennessee Grease Hauling Company and Executives Sentenced for CWA Violations --

On February 19, 2016,
SOUTHERN GREASE
COMPANY was
sentenced in federal
district court for the
Middle District of
Tennessee to pay a
**criminal fine of
\$280,000 and to forfeit
an additional \$113,500.**



Southern Grease Pump Station



Southern Grease pleaded guilty in May 2015 to four felony violations arising from its illegal disposal of waste grease into municipal sewer systems. Southern Grease, which contracted with restaurants and other customers in Tennessee and Kentucky to collect and dispose of the customers' waste grease, illegally discharged waste grease into grease interceptors that were connected to the municipal sewer systems. This illegal dumping of grease caused substantial damage to municipal sewer systems by clogging pipes and interrupting the operation of pump stations.

[MORE](#)



COMPLIANCE TOOL BOX



[GREEN BOOK \(Manual for E&SC in Georgia - New 2016\)](#)

[GREEN BOOK Video Presentation](#)

[2013 NOI & NOT Forms](#)

[2013 FACT SHEET - NPDES General Permit for Construction \(GA\)](#)

[2013 FACT SHEET ADDENDUM - NPDES General Permit for Construction](#)

[2013 GAR100001 - NPDES GENERAL PERMIT - STAND ALONE](#)

[2013 GAR100002 - NPDES GENERAL PERMIT - INFRASTRUCTURE](#)

[2013 GAR100003 - NPDES GENERAL PERMIT - COMMON DEVELOPMENT](#)

[WHO NEEDS TO BE CERTIFIED in GEORGIA - FACT SHEET](#)

[March 5, 2012 Memo for Projects Less than 1-Acre](#)

[2012 303d LIST - GEORGIA](#)

[EPD GUIDANCE TO SWCC DISTRICTS FOR PLAN REVIEWS](#)

[CITY OF ATLANTA - Forms, Checklists & CAD Sample Plans](#)

[2009 MODEL ORDINANCE \(Read Page 7, paragraph C\)](#)

[BUILDING & RENOVATING A POND in GEORGIA](#)

[TMDL IMPLEMENTATION PLANS](#)

[STREAMBANK & SHORELINE RESTORATION in GEORGIA](#)

[GESA Exemption #8](#)

[BUFFER VARIANCE REQUIREMENTS FOR DAMS](#)

SEATTLE AREA SALMON ARE LOADED WITH ANTI-DEPRESSANTS & OTHER DRUGS FROM HUMAN SEWAGE

(What about fish in the Chattahoochee River?)

BY ELAISHA STOKES

The everyday chemicals that humans ingest to relieve pain, fight depression and diabetes, or treat infection are winding up in the tissue of fish in Washington's Puget Sound.



A study in the journal Environmental Pollution detected unusually high levels of drugs like Advil, Benadryl, Prozac, and even birth control pills, in the tissue of salmon.

The culprit, according to the study, is human waste.

"About 45 of the 150 chemicals we examined were found in the fish," said James Meador, the lead author of the study and an aquatic toxicologist working with the National Oceanic and Atmospheric Administration. "Some of them were at high concentrations. That's the kind of information that raises eyebrows."

[MORE](#)



MORE STORMWATER CONFERENCES & TRAINING EVENTS

[**GEORGIA FARM & EROSION CONTROL EXPO**](#)

APRIL 29, 2016

[SOUTHEAST STORMWATER ASSOCIATION \(SESWA\)](#)

(UPCOMING CONFERENCES)

[GEORGIA ASSOCIATION OF WATER](#)

[PROFESSIONALS](#) (UPCOMING CONFERENCES)

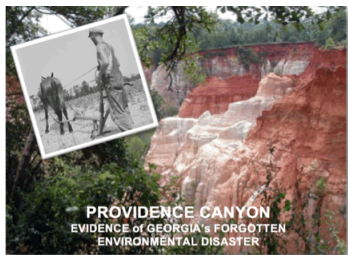
[GEORGIA RURAL WATER ASSOCIATION \(GRWA\)](#)

(UPCOMING CONFERENCES)

[INTERNATIONAL EROSION CONTROL ASSOCIATION \(IECA\)](#)

SE CHAPTER (UPCOMING CONFERENCES)

[WATER ENVIRONMENT FEDERATION](#) - WATERS WORTH IT!



HERE's TO TIGHT LINES & GOOD TIMES in Clean Abundant Water!!!



Please remember our military men and women serving the USA who always need our support!

Respecting our neighbors downstream is what NPDES is all about. It's OUR CHILDREN that will be living through decisions we make today.

NPDES is an investment into our nations future generations so they can also have an equally great place to live, swim, fish, boat, and hunt tomorrow!

A lot is happening today with water regulations that affect a diverse community of public and private entities. If you have areas of interest that you would like included in this newsletter, please contact me at 678-469-5120.



As of February 2016, the NPDES Training Institute will present video's imbedded in various articles of this newsletter. The purpose of implementing video is to introduce concepts and considerations in a different media for purposes related to increasing awareness and education in the water management community. The intent is not to demonstrate the "only" way but only offer considerations and possible alternative solutions to the challenges faced by design, installation and maintenance personnel with regard to managing stormwater and other environmental concerns in urban and rural watersheds. Demonstrating ones "intent to comply" with the NPDES Permit and other federal, state

and local requirements will protect our watersheds, as well as our pocket books in the future.

Sincerely,
NPDES TRAINING INSTITUTE


T. Luke Owen, PG
President/Principal Trainer and Consultant
www.npdestraining.com
www.ms4training.com
www.erosiontraining.com
Luke@npdestraining.com

WE GUARANTEE OUR TRAINING and DO NOT CHARGE YOU FOR A RETEST IF YOU RETURN!



Read reviews from former students and
"Raving Fans"

We are here to Help YOU!

We can set you up so you can perform your own inspections and water sampling, or we can do them for you. Contact us anytime at 678-469-5120 or info@npdestraining.com

