



IN THIS ISSUE

[QUESTIONS & ANSWERS](#)
[6th EDITION GREENBOOK](#)
[HELPFUL LINKS](#)
[ONLINE COURSES](#)
[TOOL BOX - NOIs, NOTs & PERMITS](#)
[GUARANTEED TRAINING!](#)
[UPCOMING EVENTS!](#)

Quick Links

[CHECK EXAM RESULTS](#)
[COURSE SCHEDULE](#)
[NEWSLETTER ARCHIVES](#)

CLICK HERE TO PURCHASE
 THE FIELD MANUAL

Buy Now



NOTE: The 2002 is version of the FIELD MANUAL is the only one. It is NOT THE GREENBOOK.

YES, a pollutant can be legally discharged into a state water without specific NPDES permit authorization, for now.

Taft Stettinius & Hollister LLP
 Devin D. Parram
 March 16 2015



WHOA.... the 6th Circuit Court of Appeals says "YES", that it's OK for a permittee to discharge a pollutant not specifically NPDES permitted! This case is important because it is the first circuit court decision that extends the permit shield defense to general permits. However, the court's conclusion was based largely on the

facts of the case and the particular language of the KDOW's general permit. Two separate cases show that some courts may find that generic language within a general permit can make the permit holder liable for discharges of certain pollutants even though these pollutants are not specifically delineated in the general permit. While this decision should provide some comfort to general permit holders that the permit shield may be applied, it is important for permit holders to strictly comply with all requirements of the permitting authority and conditions of their general permits.

[**MORE**](#)

**RECERTIFICATION
 IN CLASSROOM or ONLINE**

FIELD MANUAL
FOR
EROSION
AND
SEDIMENT CONTROL
IN
GEORGIA

VEGETATIVE AND STRUCTURAL
BEST MANAGEMENT PRACTICES (BMP'S)
FOR
LAND-DISTURBING ACTIVITIES



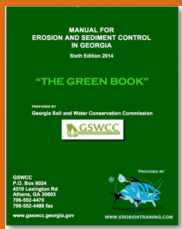
GEORGIA SOIL AND WATER
CONSERVATION COMMISSION

View our videos on **YouTube**

Buy Now



ORDER YOUR HARD COPY OF
THE NEW GREENBOOK
TODAY!!



PLEASE NOTE: THIS IS
NOT THE FIELD MANUAL!



CONSERVATION CORNER

At the NPDES Training
Institute we believe **BALANCE**
is the key to America's
future quality of life.
Keeping industry,

"FOR THE OUTDOORSMAN IN ALL OF US!"

We are ON TOP of the New Regulations

- > Convenient
- > Easy to Use
- > Available 24/7

GEOLOGICONLINE.COM



Click Here for

ONLINE RECERTIFICATION TRAINING!

CLASSROOM COURSE SCHEDULE

SIGN UP FOR A FOR A COURSE

EROSIONTRAININGONLINE.COM

 Like us on Facebook

View our profile on **LinkedIn**



**PROUD TO BE AGC's STORMWATER
TRAINING PROVIDER**



**Georgia Soil and Water
Conservation Commission**

construction and environmental protection strong in America is vital. Membership in organizations that promote environmentally responsible construction and industrial economic sectors as well as organizations that promote environmental protection are awesome groups to join! *Members from the following organizations attend NPDES Training Institute courses, however the NPDES Training Institute does not claim their endorsement!*



FISH WITH KIDS!

The Georgia Soil and Water Conservation Commission (GSWCC) could be going away!

The GSWCC provides information, oversight, and assistance in Georgia to maintain and conserve soil and water quality. ***The bill would remove the authority of GSWCC for approving the Manual for Erosion and Sediment Control in Georgia (Green Book), from the Commission and places it under a group comprised of individuals from GDOT contractors, eliminating oversight of the GSWCC appointed Stakeholder Advisory Board.***

Stay Tuned for more information next newsletter

DOES ROAD SALT KILL FISH, REALLY?

Is road salt draining through a stormdrain to a creek from deicing operations a problem for the wildlife? [Check out this article](#) for some informative data. [Click on this link for another article.](#)



When increased for extended periods of time, it looks like high chloride concentrations can negatively affect or kill aquatic organisms. Those organisms left in the stream are salt tolerant, reducing overall biodiversity, which therefore would make the stream IMPAIRED, and available for placement on the 303(d) list. Based on U.S. Environmental Protection Agency (EPA)

water quality criteria, chloride levels at or above 230 mg/L for more than four days are harmful to aquatic life.

It's an interesting subject, because it draws in the discussion of public safety versus environmental protection. They're both important, so what should we do?

[**MORE**](#)

MS4 CECI Classroom & Stream Monitoring Course **is now 2-days**

Get the MOST RECENT stormwater information "Straight from the horses mouth"! We have federal and state stormwater regulators communicate the most recent information in our NPDES Training Institute courses!



MS4 CECI Training Event

Dubbed by stormwater professionals and government officials in the business for over 2 decades, as "the most effective stormwater training course they've ever attended", the MS4 Compliance and Enforcement Certified Inspector (MS4 CECI) credential is being attended by federal, state and municipalities as well as consultants from all over the

United States? You're in for a treat when you attend this course!

"Great training! I feel like I know what to do now with my inspections."

"I liked the interaction with the instructors, updated information and all the new resources given out."



"The instructor took the time to make sure we understood our material. I feel like he really cares about what he's training!"

"Excellent Course! Video's and Interaction with Instructor!"



Upon successful completion, you will receive a Certificate of Completion and a MS4 CECI photo ID card when you pass the test.

Call us at 678-469-5120 and speak with Rita, or sign up at ms4training.com.

The 6th Edition GREEN BOOK

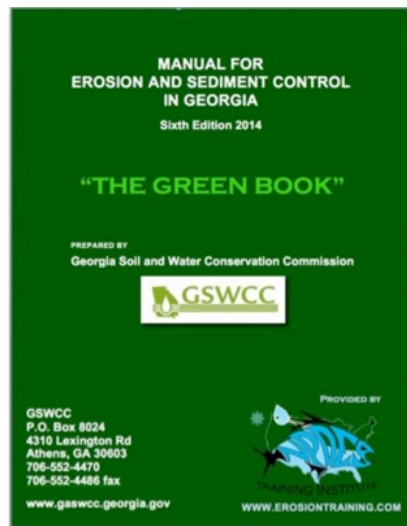
(back by popular demand)

[CLICK HERE](#) FOR A BRIEF VIDEO SUMMARIZING THE CHANGES IN THE NEW GREEN BOOK!

MANUAL FOR EROSION & SEDIMENT CONTROL

NOTE: While the Surface Skimmer is ONLY identified in the NEW 6th EDITION GREEN BOOK, it is the only Best Management Practice (BMP) that can be implemented in a design by a Level II Design Professional while using the 5th Edition Green Book as the primary source of (BMPs).





www.gswcc.georgia.gov

If you are a certified Level II Design Professional or Plan Preparer in Georgia, please review the following information to ensure that you are meeting the requirements of the Erosion and Sedimentation Act of 1975 and are aware of news regarding the *Manual for Erosion and Sediment Control in Georgia*: The Erosion and Sedimentation Act of 1975 requires that, as a minimum, protections at least as stringent as the state general permit; and best management

practices, including sound conservation and engineering practices to prevent and minimize erosion and resultant sedimentation, must be consistent with, and no less stringent than, those practices contained in the Manual for Erosion and Sediment Control In Georgia published by the State Soil and Water Conservation Commission as of January 1 of the year in which the land-disturbing activity was permitted.

For calendar year 2015, both the 5th and 6th editions of the Manual for Erosion and Sediment Control can be used as in 2014.

There is no recognized approved products list for the 6th edition of the Manual. The only approved products list recognized is the GA DOT Qualified Products List (QPL) recognized in the 5th edition, unless the product was a part of the 2013 (5th Edition) of the Manual.

Products not listed on a DOT QPL List must follow NPDES Alternative Practice standards for use on Land Disturbing Activity sites unless the product was a part of the 2013 (5th Edition) of the Manual. No new products or practices will be reviewed by the GSWCC State Board during this time period.

In the 5th edition of the *Manual for Erosion and Sediment Control in Georgia*, sediment barriers are labeled Type A, Type B, or Type C. In the 6th edition of the *Manual for Erosion and Sediment Control in Georgia*, sediment barriers are labeled Sensitive or Non-sensitive.

For calendar year 2015, it is allowable to use Type C products in sensitive areas and to use Type A and Type B products in non-sensitive areas.

[CLICK HERE](#) to download the 6th Edition Green Book.

[CLICK HERE](#) to purchase the bound 6th Edition Green Book.

[CLICK HERE](#) to download the old 5th Edition Green Book.



COMPLIANCE TOOL BOX



[GREEN BOOK \(Manual for E&SC in Georgia - New 2014\)](#)

[GREEN BOOK Video Presentation](#)

[GREEN BOOK Update Presentation Free Download](#)

[GREEN BOOK Transition Period Guidance \(NOW CANCELLED\)](#)

[2013 NOI & NOT Forms](#)

[2013 FACT SHEET - NPDES General Permit for Construction \(GA\)](#)

[2013 FACT SHEET ADDENDUM - NPDES General Permit for Construction](#)

[2013 GAR100001 - NPDES GENERAL PERMIT - STAND ALONE](#)

[2013 GAR100002 - NPDES GENERAL PERMIT - INFRASTRUCTURE](#)

[2013 GAR100003 - NPDES GENERAL PERMIT - COMMON DEVELOPMENT](#)

[WHO NEEDS TO BE CERTIFIED in GEORGIA - FACT SHEET](#)

[March 5, 2012 Memo for Projects Less than 1-Acre](#)

[2012 303d LIST - GEORGIA](#)

[2007 EPD GUIDANCE TO SWCC DISTRICTS FOR PLAN REVIEWS](#)

[CITY OF ATLANTA - Forms, Checklists & CAD Sample Plans](#)

[2009 MODEL ORDINANCE \(Read Page 7, paragraph C\)](#)

[BUILDING & RENOVATING A POND in GEORGIA](#)

[CONCRETE WASHOUT PROCEDURES](#)

[STATE WATERS \(CCouch Ltr 2004\)](#)

[LOCAL ISSUING AUTHORITIES - NEW FEB 2012 List](#)

[ALTERNATIVE BMP GUIDANCE DOC](#)

[TMDL IMPLEMENTATION PLANS](#)

[STREAMBANK & SHORELINE RESTORATION in GEORGIA](#)

[GESA Exemption #8](#)

[BUFFER VARIANCE REQUIREMENTS FOR DAMS](#)

WE GUARANTEE OUR TRAINING and DO NOT CHARGE YOU FOR A RETEST IF YOU RETURN!



International Erosion
Control Association
JOIN TODAY



Do you want to read feedback from our past students? Read reviews from our "[Raving Fans](#)"

We are here to Help YOU!



We can set you up so you can perform your own inspections and water sampling, or we can do them for you. Contact us anytime at 678-469-5120 or info@npdestraining.com



MORE STORMWATER CONFERENCES & TRAINING EVENTS

[SOUTHEAST STORMWATER ASSOCIATION \(SESWA\)](#)
(UPCOMING CONFERENCES)

[GEORGIA ASSOCIATION OF WATER PROFESSIONALS](#) (UPCOMING CONFERENCES)

[GEORGIA RURAL WATER ASSOCIATION \(GRWA\)](#)
(UPCOMING CONFERENCES)

[INTERNATIONAL EROSION CONTROL ASSOCIATION \(IECA\)](#)
SE CHAPTER (UPCOMING CONFERENCES)

[WATER ENVIRONMENT FEDERATION](#) - WATERS WORTH IT!

***HERE's TO TIGHT LINES & GOOD TIMES
in Clean Abundant Water!!!***

Respecting our neighbors downstream
is the BIG REMINDER! It's important that we sacrifice a little to give our kids an equally great place to live, swim, fish, and hunt!

There is a lot happening today with water regulations that affect a diverse community of public and private entities. If you have areas of interest that you would like included in this newsletter, please contact us at 678-469-5120.



Sincerely,
NPDES TRAINING
INSTITUTE

T. Luke Owen, PG
President/Principal
Trainer and Consultant

www.npdestraining.com
www.ms4training.com
www.erosiontraining.com
Luke@npdestraining.com

