



JULY 2016 Newsletter



We've all learned when someone receives something of value for free, they don't typically appreciate it. Similarly, when people enjoy an urban creek or river and don't see dead fish and/or don't get sick, they are usually unaware of why that is and don't know it's NPDES permit compliance and enforcement efforts that have protected their water from pollution. It takes a lot of money from employed Americans who pay water & stormwater utility bills to continue our record of having clean abundant water in the United States and more specifically, Georgia. BUT only if we comply and enforce the NPDES rules we already have.

The MS4 Compliance and Enforcement Certified Inspector credential teaches specifics about our nations method of providing clean water for everyone, not just the privileged few which is the case in so many other countries today.

America's view and/or lack of awareness of how we protect our waters is a problem in our country and causes many of our citizens to be complacent about clean water.

The MS4 CECI course is 2-days that takes the mystery out of the NPDES Permit responsibilities an inspector or program manager might have and validates the HUGE positive



www.MS4stormwatertraining.com

effect NPDES compliance has on your specific watersheds. Sign up and receive a **15% Discount** for the upcoming class on **August 1st, 2016**. Call us at 678-469-5120 for answers to questions or register at www.ms4training.com.

STAY TUNED.....

The New NPDES General Permits for Construction WILL BE POSTED VERY SOON!

ALSO..... the state law (GESA) is amended to clarify the definition of **minor land disturbance**.

[CLICK HERE](#) to go to Georgia EPDs amendment.

IN THIS ISSUE

[GEORGIA E&S LAWS](#)

[6th EDITION GREENBOOK](#)

[US EPA DECISION to not
require](#)

[GUARANTEED TRAINING!](#)

[ONLINE COURSES](#)

[EPA FACTS for REGION IV](#)

[The NEW GREEN BOOK and
FIELD MANUAL](#)

[COMPLIANCE TOOL BOX](#)

[STORMWATER CONFERENCES](#)

[CHIPPER SAFETY COURSE](#)

Quick Links

[CHECK EXAM RESULTS](#)

[COURSE SCHEDULE](#)

[NEWSLETTER ARCHIVES](#)

BUY THE NEW 2016 FIELD MANUAL

The NEW 2016 version of the
FIELD MANUAL. It is NOT THE
GREENBOOK.

US EPA Decides **NOT** To Regulate FORESTRY ROADS for Stormwater

USEPA

40 CFR Chapter I
Area.

Register CITATION].
**SUPPLEMENTARY
INFORMATION :**

I. General Information

A. Applicability

This document does not
impose requirements on any
entity.

B. Obtaining Copies of This Document and Related Information

1. Docket

EPA has established a docket for this action under Docket ID No. [EPA-HQ-OW-2015-0668; FRL-9948-62-OW]. Publicly available docket materials are available either electronically through www.regulations.gov or in hard copy at the EPA Docket Center, (EPA/DC) EPA West, Room 3334, 1301 Constitution Ave. NW., Washington, DC. The EPA Docket Center Public Reading Room is open from 8:30 a.m. to 4:30 p.m.,

[EPA-HQ-OW-2015-0668; FRL-9948-62-OW]

Decision Not To Regulate Forest Road Discharges Under the Clean Water Act; Notice of Decision

AGENCY : Environmental Protection Agency (EPA).

ACTION : Decision.



**STATE DOT ROADS
NPDES PERMIT REQUIREMENTS**



**FORESTRY ROADS
NO NPDES PERMIT REQUIREMENTS**

SUMMARY : The Environmental Protection Agency (EPA) is providing notice of the Agency's decision that **no additional regulations are needed to address stormwater discharges from forest roads** under Section 402(p) (6) of the Clean Water Act (CWA) at this time. This

FIELD MANUAL
FOR
EROSION
AND
SEDIMENT CONTROL
IN
GEORGIA

VEGETATIVE AND STRUCTURAL
BEST MANAGEMENT PRACTICES (BMP'S)
FOR
LAND-DISTURBING ACTIVITIES



GEORGIA SOIL AND WATER
CONSERVATION COMMISSION

View our videos on **YouTube**

document responds to the remand in *Environmental Defense Center, Inc. v. U.S. EPA*, 344 F.2d 832 (9th Cir. 2003) that requires EPA to consider whether the CWA requires the Agency to regulate stormwater discharges from forest roads.

DATES : This decision shall be considered issued for purposes of judicial review at 1 p.m. Eastern time on July 11, 2016.

FOR FURTHER INFORMATION CONTACT :

Prasad Chumble, EPA Headquarters, Office of Water, Office of Wastewater Management via email at chumble.prasad@epa.gov or telephone at 202-564-0021.

[MORE](#)



WE GUARANTEE OUR TRAINING and DO NOT CHARGE YOU FOR A RETEST IF YOU RETURN!



Read reviews from former
"Raving Fans"

We are here to Help YOU!
Call us at 678-469-5120!



Buy Now



**CLICK HERE FOR
YOUR COPY OF THE
2016 GREEN BOOK**

MANUAL FOR EROSION AND SEDIMENT CONTROL
IN GEORGIA

"THE GREEN BOOK"

2016
6th Edition

Georgia Soil and Water Conservation Commission



P.O. Box 8024
4310 Lexington Rd, Athens, GA 30603
706-552-4470 phone 706-552-4466 fax

www.gaswcc.georgia.gov



PRODUCED BY:
NPDES TRAINING INSTITUTE
1000 Peachtree Industrial Blvd., Suite 6100
Buckhead, GA 30329
www.erosiontraining.com



Proud Member of ...

Greater
Atlanta
Home Builders
Association

**RECERTIFICATION
IN-CLASSROOM or ONLINE**
"FOR THE OUTDOORSMAN IN ALL OF US!"

- > Convenient
- > Easy to Use
- > Available 24/7

GEOLOGICONLINE.COM



Click Here for

ONLINE RECERTIFICATION TRAINING!

CLASSROOM COURSE SCHEDULE

SIGN UP FOR A FOR A COURSE

EROSIONTRAININGONLINE.COM



Like us on Facebook

View our profile on **LinkedIn**



ASSOCIATED GENERAL CONTRACTORS



GREATER ATLANTA HOME BUILDERS



NPDES Permit FACTS



If you live in the southeast, you live in EPA Region IV of the United States. In Region IV, did you know there are approximately.....

- 8,000 Industrial Facilities
- 36,000 construction sites
- 361 Phase I MS4 Permittees
- 567 Phase II MS4 Permittees

"Our population is tremendously reliant on **state enforcement** and even more on local **MS4 enforcement efforts** to ensure our streams, rivers, lakes and coastal waters are clean. US EPA

"There will always be

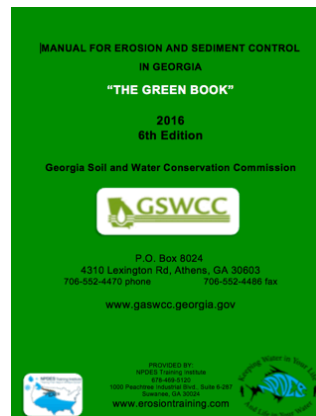
***5% of individuals who will violate no matter what,
20% of individuals who will comply no matter what, and
75% of individuals who will comply only if the violators are
punished or the requirements are perceived as **non-arbitrary**".***

Definition:

Non-arbitrary: subject to individual will or judgement without restriction; contingent solely upon one's discretion.

"Improving the Efficiency and Effectiveness of Compliance Monitoring and Enforcement of Environmental Policies" - Cheryl Wasserman

**FOR YOUR your NEW
6th EDITION GREENBOOK [Click Here](#)**



OR
DOWNLOAD A [FREE COPY](#) here!

AS OF JULY 1, 2016 ONLY THE
6th EDITION GREENBOOK CAN
BE USED ON NEW ES&PC PLANS.

COMPLIANCE TOOL BOX



Local Government NPDES Enforcement & Plan Review Authority

[GREEN BOOK \(Manual for E&SC in Georgia - New 2016\)](#)

[GREEN BOOK Video Presentation](#)

[2013 NOI & NOT Forms](#)

[2013 FACT SHEET - NPDES General Permit for Construction \(GA\)](#)

[2013 FACT SHEET ADDENDUM - NPDES General Permit for Construction](#)

[2013 GAR100001 - NPDES GENERAL PERMIT - STAND ALONE](#)

[2013 GAR100002 - NPDES GENERAL PERMIT - INFRASTRUCTURE](#)

[2013 GAR100003 - NPDES GENERAL PERMIT - COMMON DEVELOPMENT](#)

[WHO NEEDS TO BE CERTIFIED in GEORGIA - FACT SHEET](#)

[March 5, 2012 Memo for Projects Less than 1-Acre](#)

[NEW 2014 303d LIST \(Georgia\) - for use as of July, 2016](#)

[EPD GUIDANCE TO SWCC DISTRICTS FOR PLAN REVIEWS](#)

[CITY OF ATLANTA - Forms, Checklists & CAD Sample Plans](#)

[2009 MODEL ORDINANCE \(Read Page 7, paragraph C\)](#)

[BUILDING & RENOVATING A POND in GEORGIA](#)

[TMDL IMPLEMENTATION PLANS](#)

[STREAMBANK & SHORELINE RESTORATION in GEORGIA](#)

[GESA Exemption #8](#)



BUFFER VARIANCE REQUIREMENTS FOR DAMS



MORE STORMWATER CONFERENCES & TRAINING EVENTS



[SOUTHEAST STORMWATER ASSOCIATION \(SESWA\)](#)
(UPCOMING CONFERENCES)



[GEORGIA ASSOCIATION OF WATER PROFESSIONALS](#) (UPCOMING CONFERENCES)



[GEORGIA RURAL WATER ASSOCIATION \(GRWA\)](#)
(UPCOMING CONFERENCES)

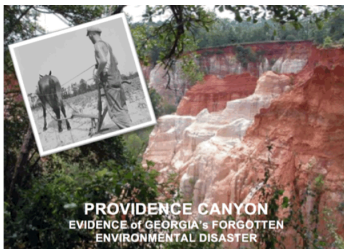


[INTERNATIONAL EROSION CONTROL ASSOCIATION](#)
SE CHAPTER (UPCOMING CONFERENCES)



[WATER ENVIRONMENT FEDERATION](#) -
WATERS WORTH IT! (UPCOMING CONFERENCES)

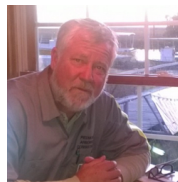
Chipper Operator Specialist Workshop



Accidents involving brush chippers are a significant concern for tree care and landscape employers, the tree care workers who operate the equipment and manufacturers alike. Strong anecdotal information from the field tells us that chipper operators receive little or no formal training on chipper operation and field maintenance. TCIA's Tree Care Academy Chipper Operator Specialist course is designed to train tree care crews in hazards, as well as accepted practices for brush chipper operation and other associated tasks. The course, which is built for crew members who often do not receive formal training opportunities, will increase involvement with self-policing.

To REGISTER, or be a VENDOR
please contact the Georgia Arborist Association

QUESTIONS?
404-913-1422
info@georgiaarborist.org



Russell is the owner & principle trainer for Piedmont Arborist Consultants, LLC. He is a Tree Care Safety Specialist with the Tree Care Industry Association. He serves on the Board of the Rockdale County Soil and Conservation District and Georgia Arborist Association. He has a BS in Plant Biology from Valdosta State University and is a Certified Arborist and Municipal Specialist with the International Society of Arboriculture.
www.georgiaarborist.org

When:

September 7, 2016; 8:30
a.m. – 2:45 p.m.

Where:

Rockdale County
Extension Service, 1400
Parker Road, Conyers GA

Registration Cost \$25

Registration. Includes
cost of chipper safety
training manual, breakfast
and lunch.

To Register:

Please contact the
Georgia Arborist
Association to register. If
you wish to be a vendor
or have any questions
then you must also contact
the Georgia Arborist
Association.

HERE's TO TIGHT LINES & GOOD TIMES in Clean Abundant Water!!!

Respecting our neighbors downstream is what America is all about and it's the NPDES permit that helps us do that! It's OUR CHILDREN that will be living through decisions we make today. NPDES is an investment into our nations future generations so they can also have an equally great place to live, swim, fish, boat, and hunt tomorrow!

In 2016, I started presenting video's in various articles. They've become very popular and when viewed remember the purpose of implementing video is to introduce concepts and considerations in a different media for purposes related to increasing awareness and education in the water management community. The intent is not to demonstrate the "only" way but only offer considerations and possible alternative solutions to the challenges faced by design, installation and maintenance personnel with regard to managing stormwater and other environmental concerns in urban and rural watersheds. Demonstrating ones "intent to comply" with the NPDES Permit and other federal, state and local requirements will protect our watersheds, as well as our pocket books in the future.





Luke@npdestraining.com

Sincerely,
NPDES  TRAINING
INSTITUTE



T. Luke Owen, PG
President/Principal Trainer and
Consultant

www.npdestraining.com

www.ms4training.com

www.erosiontraining.com