



"The nation behaves well if it treats its natural resources as assets which it must turn over to the next generation, increased and not impaired in value."

-Theodore Roosevelt

www.gaepd.org



IN THIS ISSUE

[QUESTIONS & ANSWERS](#)

[HELPFUL LINKS](#)

[WATER WARS UPDATE](#)

[ONLINE COURSES](#)

[TOOL BOX - NOIs, NOTs & PERMITS](#)

[UPCOMING EVENTS!](#)

Quick Links

[CHECK EXAM RESULTS](#)

[COURSE SCHEDULE](#)

[NEWSLETTER ARCHIVES](#)

New **NOTICE OF INTENT (NOI)** for GEORGIA

FOR LAND DISTURBING ACTIVITIES
GREATER THAN or EQUAL to 1-ACRE

The Notice on Intent forms for **Primary Permittees** have been revised - The NOI for Primary Permittees has been revised to include the **land disturbance fee** calculations and submission instructions.

The revised **NOI for Primary Permittees Version 2015** form is now available in both **PDF Adobe**

NOTICE OF INTENT

VERSION June 2015



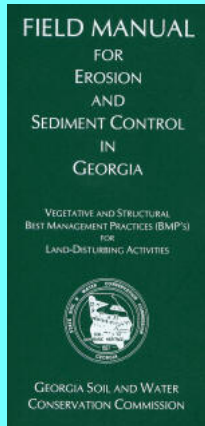
[CLICK HERE FOR THE 2015 REVISED NOI](#)

CLICK HERE TO PURCHASE
THE FIELD MANUAL

Buy Now



NOTE: The 2002 version of the FIELD MANUAL is the only one. It is NOT THE GREENBOOK.



View our videos on **YouTube**



CONSERVATION CORNER

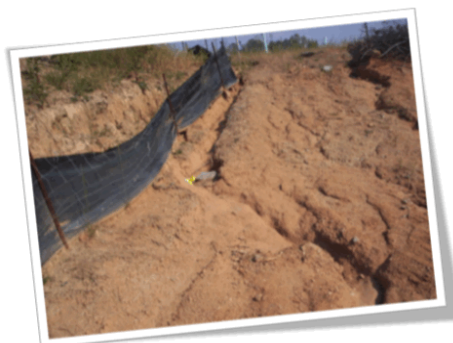
At the NPDES Training Insitute we believe BALANCE is the key to America's future quality of life. Keeping industry, constuction and environmental protection strong in America is vital. Membership in organizations that promote environmentally responsible construction and industrial economic sectors as well as organizations that promote environmental protection are awesome groups to join!

Reader and MS Word formats.

The **PDF Adobe NOI** can be completed electronically - however, the applicant cannot save the data typed on the PDF Adobe Reader form and cannot submit the PDF Adobe Reader form electronically. A completed and signed copy with the applicable attachments must be mailed to the appropriate EPD District office (as listed in the documents instructions) and a second completed and signed copy with the check/money order (when applicable) must be mailed to the EPD bank lockbox.

MAIL Checks/Money Orders to EPD LOCK BOX NOT THE EPD District office!

MS Word - the NOI form must be completely (print or type) and signed. A completed and signed copy with the applicable attachments must be mailed to the appropriate EPD District office and a second completed and signed copy with the check/money order (when applicable) must be mailed to the EPD bank lockbox. Checks/money orders should never be mailed to the EPD District offices.



FORMS THAT HAVE NOT CHANGED:

The NOI forms for Secondary, Blanket Secondary and Tertiary Permittees and Notice of Termination forms have not changed - permittees should continue to use the Version 2013 NOI forms for Secondary, Blanket Secondary and Tertiary Permittees and all Notices of Termination.

[CLICK HERE](#) to download either the .pdf or word doc file.

CLEAN WATER ACT ENFORCEMENT

MUNICIPALITIES (MS4S) TARGETED IN CLEAN WATER CRACKDOWN!



Following studies that showed the nation's stormwater regulatory program wasn't meeting objectives under the Clean Water Act, the USEPA has been bringing the hammer down on municipalities whose mandated stormwater protection efforts bore little activity, and in some cases, no activity. That comprehensive review, among many the EPA has launched could foreshadow things to come as the USEPA carries out an aggressive crackdown of regulatory noncompliance of the Clean Water Act Phase II stormwater laws established to protect Americans from contaminants such as sediment, fertilizers, pesticides and gasoline.

"We know what our guys are doing, which is correct, but we didn't have the documentation to say, yes, this has been done," Strohecker said. "We know darn well all of our guys don't let gas

Members from the following organizations attend NPDES Training Institute courses, however the NPDES Training Institute does not claim their endorsement!



spill into a storm drain. Those were the kinds of things that were frustrating."

What municipalities with stormwater management permits (MS4S) **are required to do under**



federal law. They must:

- * **Educate** the public about the impacts of stormwater discharges.
- * **Promote** public involvement in stormwater management initiatives.
- * **Create** a storm sewer system map, showing locations of all outfalls and locations of waterways, and an ordinance prohibiting discharges into storm sewer systems.
- * **Have** an ordinance in place to control erosion and sediment at construction sites.
- * **Have** a program to require post-construction stormwater controls to reduce the amount of pollutants getting into stormwater systems.
- * **Have** a program in place to prevent pollutant runoff, such as oil, fuel and pesticides from municipal properties.

[MORE](#)



SALT MARSH BUFFERS PROTECTION PROCEDURES



FISH WITH KIDS!

Coastal Marshlands Protection Act of 1970 O.C.G.A. 12-5-280-297

The coastal marshlands:

- comprise a vital natural resource system...
- is the habitat of many species of marine life and wildlife...
- provide a great buffer against flooding and erosion...
- help control and disseminate pollutants...
- vitally linked to the economy of Georgia's coastal zone and to that of the entire state...
- costly, if not impossible, to reconstruct or rehabilitate once adversely impacted by man related activities...
- essential to health, safety, and welfare of all the citizens of the state...

The General Assembly finds and declares that activities and structures in the coastal marshlands must be regulated to ensure the values and functions of the coastal marshlands are not impaired...

Georgia Department of Natural Resources
Coastal Resources Division

Salt Marsh Buffers are now permanently protected as of Governor Deal's signature on May 6, 2015. How they're actually going to be protected is up to the state law and the stakeholders who are meeting and gaining public comment on the methods to implement salt marsh protection procedures.

The 2nd and most recent meeting was on July 14, 2015.

[CLICK HERE](#) to learn more!

RECERTIFICATION IN CLASSROOM or ONLINE *"FOR THE OUTDOORSMAN IN ALL OF US!"*

We are ON TOP of the New Regulations

- > Convenient
- > Easy to Use
- > Available 24/7

GEOLOGICONLINE.COM



Click Here for



ONLINE RECERTIFICATION TRAINING!

[CLASSROOM COURSE SCHEDULE](#)

[SIGN UP FOR A FOR A COURSE](#)

EROSIONTRAININGONLINE.COM



Like us on Facebook

View our profile on **Linked** 



PROUD TO BE AGC's STORMWATER TRAINING PROVIDER

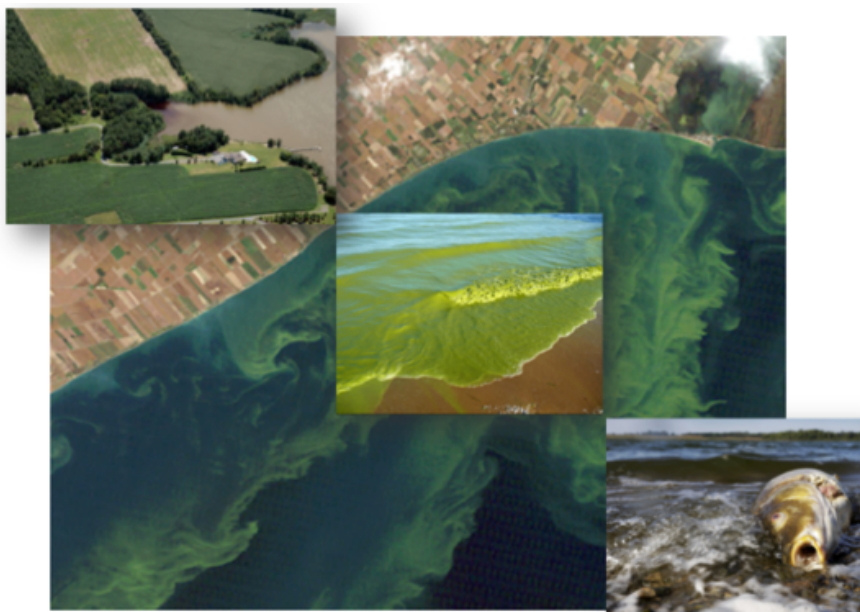
WHAT's the SOLUTION?

AGRICULTURE

VS

WATER QUALITY

Click on the various photo's for related articles



LAKE ERIE ALGAE BLOOM

Given our world population explosion, it's the quandary of food production versus water quality in todays world! The same drive for efficiency that lowers the cost of eating also damages our soil and



water if we let it, and so far we're letting it! China's been suffering and it's getting even worse for them!

This is where the problem starts.....

Farmers near chicken houses or hog farms often take lots of manure and spread it on their fields, partly just to get rid of it and partly for its value as fertilizer. Chicken and hog growers also sell their manure directly to farmers. Crops, need much more nitrogen than phosphorus. When farmers use manure to give their crops an optimal amount of nitrogen, they oversupply phosphorus.



Boat motoring through an algae bloom

This is happening everywhere, where you have large concentrations



Florida Manatee Struggling to Survive

of animal production, you tend to have a buildup of nutrients - phosphorus is the one that accumulates - in soils around concentrated animal-producing regions. Phosphorus is one of the nutrients that plants need to grow, and for most of human history, farmers always needed more of it. This is not the case today!

Traditionally, farmers got phosphorus from animal manure. So if you grew crops like corn or wheat, it was good to have poultry or hogs nearby. Your grain fed the animals, and their manure fed your crops. Everything worked together.

Then came industrial fertilizer: big phosphorus mines; factories for making the other important nutrient, nitrogen; and railroads or highways to carry that fertilizer to any farmer who needed it.

With the development of the inorganic fertilizer

industry, it's possible to grow grain without having animals nearby. So you decouple the animal agriculture from the grain agriculture, and there you have it today.....POOR WATER QUALITY!

Lake Erie Algae Blooms are coming back with a vengeance in 2015! A massive red tide is moving it's way up the Pacific Coast, fish and manatees are dying in record numbers in some areas! Is it really all that bad? Well....let's just say that if it's not in your area, it is somewhere else in America, and not just a few places either!

RED TIDE



DAY



NIGHT

California Red Ti





MS4 CECI Classroom & Stream Monitoring Course



"Straight from the horses mouth"! We have federal and state stormwater regulators communicate the most recent information in our NPDES Training Institute courses!

MS4 CECI Training Event

Stormwater professionals and government officials in the business for decades say the MS4 CECI course is the most effective stormwater training course they've ever attended.

The MS4 Compliance and Enforcement Certified Inspector (MS4 CECI) credential is highly sought after by federal, state and municipalities as well as consultants from all over the United States?

"This was the Best, most thorough storm water class that I've ever taken.

"Luke has a way of communicating potentially boring & complicated issues in a way that made the class fun and challenging at the same time. Great Course!"

"The instructor took the time to make sure we understood our material. I feel like he really cares about what he's training!"

"Excellent Course! Video's and Interaction with Instructor!"

Upon successful completion of the course, you will receive a Certificate of Completion and a MS4 CECI photo ID card when you





pass the test.

Call us at 678-469-5120 and speak with Rita, or sign up at ms4training.com.

COMPLIANCE TOOL BOX



[GREEN BOOK \(Manual for E&SC in Georgia - New 2014\)](#)

[GREEN BOOK Video Presentation](#)

[GREEN BOOK Update Presentation Free Download](#)

[GREEN BOOK Transition Period Guidance \(NOW CANCELLED\)](#)

[2013 NOI & NOT Forms](#)

[2013 FACT SHEET - NPDES General Permit for Construction \(GA\)](#)

[2013 FACT SHEET ADDENDUM - NPDES General Permit for Construction](#)

[2013 GAR100001 - NPDES GENERAL PERMIT - STAND ALONE](#)

[2013 GAR100002 - NPDES GENERAL PERMIT - INFRASTRUCTURE](#)

[2013 GAR100003 - NPDES GENERAL PERMIT - COMMON DEVELOPMENT](#)

[WHO NEEDS TO BE CERTIFIED in GEORGIA - FACT SHEET](#)

[March 5, 2012 Memo for Projects Less than 1-Acre](#)

[2012 303d LIST - GEORGIA](#)

[2007 EPD GUIDANCE TO SWCC DISTRICTS FOR PLAN REVIEWS](#)

[CITY OF ATLANTA - Forms, Checklists & CAD Sample Plans](#)

[2009 MODEL ORDINANCE \(Read Page 7, paragraph C\)](#)

[BUILDING & RENOVATING A POND in GEORGIA](#)

[CONCRETE WASHOUT PROCEDURES](#)

[STATE WATERS \(CCouch Ltr 2004\)](#)

[LOCAL ISSUING AUTHORITIES - NEW FEB 2012 List](#)

[ALTERNATIVE BMP GUIDANCE DOC](#)

[TMDL IMPLEMENTATION PLANS](#)

[STREAMBANK & SHORELINE RESTORATION in GEORGIA](#)



International Erosion
Control Association
JOIN TODAY

BUFFER VARIANCE REQUIREMENTS FOR DAMS



MORE STORMWATER CONFERENCES & TRAINING EVENTS



[SOUTHEAST STORMWATER ASSOCIATION \(SESWA\)](#)
(UPCOMING CONFERENCES)

[GEORGIA ASSOCIATION OF WATER PROFESSIONALS](#) (UPCOMING CONFERENCES)

[GEORGIA RURAL WATER ASSOCIATION \(GRWA\)](#)
(UPCOMING CONFERENCES)

[INTERNATIONAL EROSION CONTROL ASSOCIATION \(IECA\)](#)
SE CHAPTER (UPCOMING CONFERENCES)

[WATER ENVIRONMENT FEDERATION](#) - WATERS WORTH IT!

HERE's TO TIGHT LINES & GOOD TIMES in Clean Abundant Water!!!

*Questions worth asking yourself
now that the world is growing by
over 200,000 people every day and
America growing by almost 6
thousand people per day.....*

*Do my actions today support my
children (or grandchildren) to grow up
in a environmentally healthy America
tomorrow? Am I PROUD TO BE AN
AMERICAN or am I GRATEFUL to be
an AMERICAN?*

*Personally, I want to be thought of as an American who is PROUD of my decisions that contribute to
society in a positive way both now and into the future. But just as important I want to be thought of
as GRATEFUL for the individuals who chose to sacrifice their lives in battle for my country, as well*





as individual business owners who invest their profits into protecting our environmental, in particular my water quality so I can enjoy the liberties I take advantage of today! I believe it's within all people to think of others before themselves.
After all, isn't that one of America's pillars and why we are the most generous society on earth?!



There is a lot happening today with water regulations that affect a diverse community of public and private entities. If you have areas of interest that you would like included in this newsletter, please contact us at 678-469-5120.



Sincerely,
NPDES TRAINING INSTITUTE

T. Luke Owen, PG
President/Principal Trainer and Consultant

www.npdestraining.com

www.ms4training.com

www.erosiontraining.com

Luke@npdestraining.com