



"Runoff Reduction", "Low Impact Development (LID), Green Infrastructure (GI); What are these terms and **why** should you care?

Short story is this.....



People are mess makers and have historically caused serious water quality problems in our rivers, lakes and oceans to the point of causing millions of people to get sick and/or die at a young age. This occurred because of untreated sewage and factory pollution (point sources) that drained into our creeks, rivers, lakes and coastal areas untreated. Years ago, before 1972, America was no different than many countries around the world today. In America however, there are severe penalties levied against sewage treatment plants and factories

when they allow untreated waste water into our country's waterways. As a result, the immediately toxic pollution is no longer consistently discharged into our rivers, lakes and coastal areas.

In 1987, America realized that stormwater was transferring a lot of pollution into our watersheds and this continues to be a rapidly growing problem. How we know the task of protecting our watersheds, is a lot more complex than just picking on factories and human waste discharges.



Today, we've found that simply treating water from the obvious sources of pollution does not fix the water quality problem. We now understand that high volumes of water pollution often drains into our watersheds from **stormwater runoff** from many different sources (non-point sources) in a single city, and as a result, toxic levels of pollution are accumulating to the point of causing human disease, death, fish kills, etc.



America has spent a lot of time and money studying this problem, and we've finally realized that mother nature has offered the best stormwater pollution cleaning system imaginable, a **forest**! If we simply slow down the water where it can infiltrate back into the ground, the pollution is also significantly reduced.

Once again, simple mother nature is offers the best solution at protecting our watersheds. There is absolutely no better treatment system than a forest. In other

words, if we try to develop stormwater management systems that mimic a forest's ability to infiltrate stormwater back into the ground, we can also remove a lot of the pollution by simply allowing the earth to treat & clean the pollution itself.

GI, LID, or RUNOFF REDUCTION methods are just different names for the same thing; mans best effort to mimic mother natures perfect water treatment system, a forest. Studies show that by infiltrating the first 1 inch of rain back into the ground, we can achieve almost 100% reduction in total suspended solids (dirt, pollution, etc.) that would otherwise end up in our rivers and coasts.

Infiltrating roughly 85% of the rain events we see in Georgia, back into the ground so there is no runoff, is the goal!

Call Rita or Tami with any questions you might have at 678-469-5120, or go to www.erosiontraining.com to schedule yourself or your organization for a great course.



UPCOMING CLASSES (see below)

Level 1A Fundamentals ([Blue Card](#)) [Click Here](#)

February 3 - Conyers
February 9 - Macon
February 13, Marietta
February 17, Norcross
March 3rd, Lawrenceville
March 3rd, Conyers

Level 1B Advanced Fundamentals ([Red Card](#)) [Click Here](#)

February 23-24, Marietta

Level II Introduction to Design ([Tan/Gray Card](#)) [Click Here](#)

for Design Pro's (Tan Card) and Plan Reviewers (Gray Card)
February 27-28, Norcross

Level 1A, 1B, II RECERTIFICATION

February 10 Macon
February 17 Conyers
February 28 Norcross

ONLINE RECERT (ANY TIME)

MS4 Compliance Enforcement Certified Inspector (MS4CECI)

March 2-3, Tempe, Arizona
March 6-7, Marietta, Georgia

MS4CECI - RECERTIFICATION

February 16, Marietta

<< February 2017 >>						
Search for Courses	Sunday	Monday	Tuesday	Wednesday	Thursday	Friday
ZIP/Postal Code <input type="text"/>	29	30	31	February 1	2	3
Events Within 5 Miles						Level 1A Fundamentals
Course Selection Show All	5	6	7	8	9	10
Location City Show All					Level 1A Fundamentals	Level 1A & 1B Re-Certification
View by Month (Sun-Sat)	12	13	14	15	16	17
Starting on Month Year February 2017		Level 1A Fundamentals			RENEWAL for Certified MS4	Level 1A Fundamentals Level 1A/1B & Level II Re-
Search Clear	19	20	21	22	23	24
					Level 1B Advanced Fundamentals 2.23&24.17 Marietta	
	26	27	28	March 1	2	3
		Level II Introduction to Design 2.27&28.17 Norcross Level 1A/1B & Level II Re-			Certified MS4 Compliance &	Level 1A Fundamentals Level 1A Fundamentals

MS4 CECI COURSE

Now with
GREEN INFRASTRUCTURE
(LOW IMPACT DEVELOPMENT)

This course meets the MS4 NPDES Permit requirement for training & **Green Infrastructure**.

TEMPE, ARIZONA
MARCH 2nd - 3rd, 2017

MARIETTA, GEORGIA
MARCH 6th - 7th, 2017

INDIANAPOLIS, INDIANA
AUGUST 10th - 11th, 2017
CALL RITA to REGISTER!

LAS VEGAS, NEVADA
SEPTEMBER 26th - 28th, 2017
CALL RITA to REGISTER!



"THE BEST STORMWATER CLASS I'VE EVER ATTENDED!"

CALL RITA at 678-469-5120 if you need help registering!

IN THIS ISSUE

UPCOMING CLASSES

MS4 CECI Course Registration

The NEW GREEN BOOK and
FIELD MANUAL

AMERICA's WATERSHEDS

WHY IS CERTIFICATION
IMPORTANT?

LOCAL ENFORCEMENT

ONLINE COURSES

COMPLIANCE TOOL BOX

STORMWATER CONFERENCES

AMERICA's WATERSHEDS

Can You Find the Chattahoochee-Flint-Appalachicola
Watershed (hint.....it's green)

*"Water always goes where it wants to go, and nothing in
the end can stand against it."*

Margaret Atwood

Quick Links

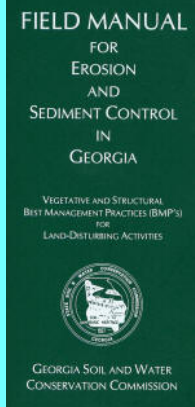
CHECK EXAM RESULTS

COURSE SCHEDULE

NEWSLETTER ARCHIVES

BUY THE NEW 2016 FIELD MANUAL

The NEW 2016 version of the
FIELD MANUAL. It is NOT THE
GREENBOOK.

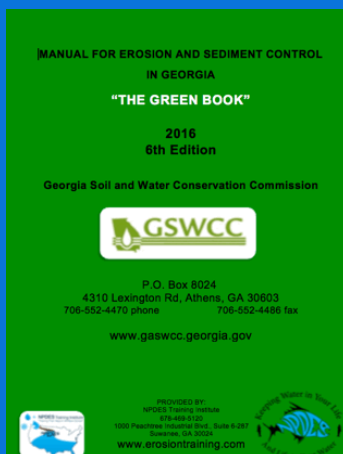


View our videos on 

Buy Now

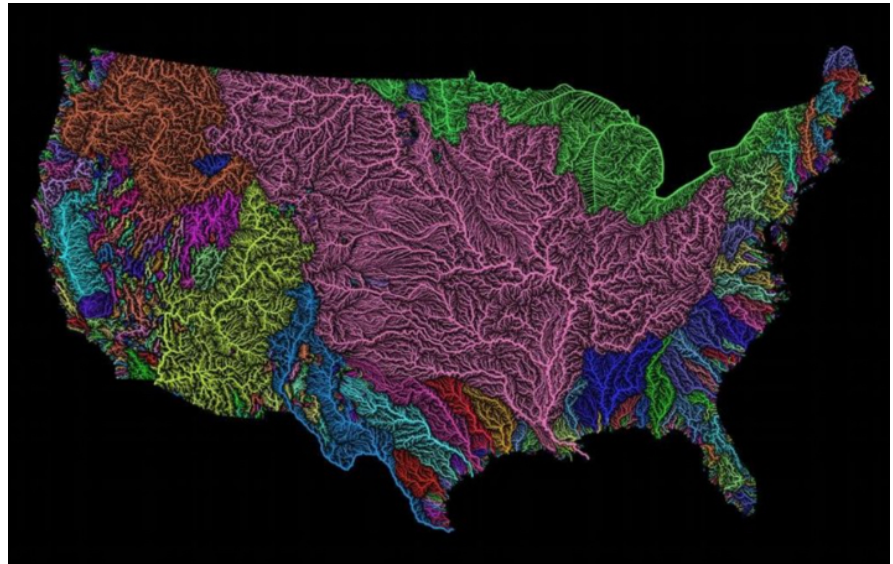


[CLICK HERE FOR
YOUR COPY OF THE
2016 GREEN BOOK](#)



OR
DOWNLOAD A
[FREE COPY](#) [here!](#)

USA has more than 25,000 Rivers that travel a total of



3.5 million miles. Every river in a color drains to the same river, which then drains into the ocean. The giant basin in the middle of the country is the Mississippi River basin. The Chattahoochee River is like a creek compared to other major rivers like the Ohio and the Missouri that drain into the massive behemoth Mississippi River.

[MORE](#)

WHY IS CERTIFICATION SO IMPORTANT?



*Certification **if taught by a good trainer,** is one of the most effective ways of demonstrating your knowledge and proficiency regarding stormwater treatment system design, compliance and enforcement. Operating a stormwater treatment system (land disturbing activity), is challenging to say the least when it rains, and impossible to operate well IF the responsible person is not properly trained in the art of permit compliance and best management practice (BMP) implementation!*

*Certification works when it's viewed like it's a drivers license. The certificate or card demonstrates a person's ability to properly **design, install & maintain** a the erosion, sediment and pollution control plan in a way that complies with the rules & regulations on the road; rules that have been put in place because of the huge potential damage to people and the environment if sediment is allowed to leave a construction site in an irresponsible manner.*



AS OF JULY 1, 2016
ONLY THE 2016
EDITION GREENBOOK
CAN BE USED in
GEORGIA.

Proud Member of ...

Greater
Atlanta
Home Builders
Association



The
Weather
Channel

Being certified is like being licensed to operate a truck. Your card demonstrates your willingness and professional ability to perform your duties in a highly professional manner, so your actions do not damage the financial health of your employer, people downstream, or the health of our watersheds. Certification shows others that you know what you're doing and understand the legal and technical implications behind an NPDES Permitting program that holds people accountable for the damage their land disturbances can cause to others downstream!



If you really want to know the WHY behind your erosion and sediment control service to our country and WHY it is SO IMPORTANT, take a class from the NPDES Training Institute.
WE GUARANTEE OUR TRAINING!

We are a company that ALWAYS gives you more than you expect, where you NEVER PAY MORE THAN ONCE!

LOCAL ISSUING AUTHORITY ENFORCEMENT is critical to America's Quality of Life

Our population is tremendously r eliant on **state enforcement** and even more on **local enforcement efforts** that ensure our streams, rivers, lakes and coasts are protected.



Research shows:

5% will violate water quality laws no matter what,

20% will comply with water quality laws no matter what, and

75% will comply only with effective local enforcement!

"Improving the Efficiency and Effectiveness of Compliance Monitoring and Enforcement of Environmental Policies"

Cheryl Wasserman

RECERTIFICATION
IN-CLASSROOM or ONLINE
"FOR THE OUTDOORSMAN IN ALL OF US!"



- > Convenient
- > Easy to Use
- > Available 24/7

GEOLOGICONLINE.COM



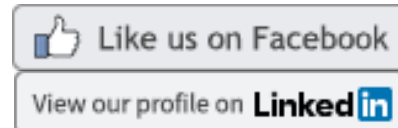
[Click Here for](#)

ONLINE RECERTIFICATION TRAINING

CLASSROOM COURSE SCHEDULE

SIGN UP FOR A FOR A COURSE

EROSIONTRAININGONLINE.COM



ASSOCIATED GENERAL CONTRACTORS



GREATER ATLANTA HOME BUILDERS



COMPLIANCE TOOL BOX



NPDES Training Institute
"Training That Helps It All Make Sense!"



Local Government NPDES Enforcement & Plan Review Authority

GREEN BOOK (Manual for E&SC in Georgia - New 2016)



**NEED HELP with
DUST CONTROL,
SEDIMENT BASINS?
CALL JIM SPOTTS**

770-216-9514

southeastenvironment
alconsultants.com



[GREEN BOOK Video Presentation](#)

[WHO NEEDS TO BE CERTIFIED in GEORGIA - FACT SHEET](#)

[March 5, 2012 Memo for Projects Less than 1-Acre](#)

NEW [2014 303d LIST \(Georgia\) - for use as of July, 2016](#)

[EPD GUIDANCE TO SWCC DISTRICTS FOR PLAN REVIEWS](#)

[CITY OF ATLANTA - Forms, Checklists & CAD Sample Plan](#)

[BUILDING & RENOVATING A POND in GEORGIA](#)

[TMDL IMPLEMENTATION PLANS](#)

[STREAMBANK & SHORELINE RESTORATION in GEORGIA](#)

[GESA Exemption #8](#)

[BUFFER VARIANCE REQUIREMENTS FOR DAMS](#)



MORE STORMWATER CONFERENCES & TRAINING EVENTS



[SOUTHEAST STORMWATER ASSOCIATION \(SESWA\)](#)
(UPCOMING CONFERENCES)



[GEORGIA ASSOCIATION OF WATER
PROFESSIONALS](#) (UPCOMING CONFERENCES)



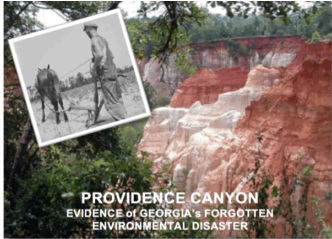
[GEORGIA RURAL WATER ASSOCIATION \(GRWA\)](#)
(UPCOMING CONFERENCES)



[INTERNATIONAL EROSION CONTROL ASSOCIATION
SE CHAPTER](#) (UPCOMING CONFERENCES)



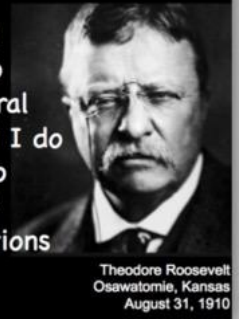
[WATER ENVIRONMENT FEDERATION -
WATERS WORTH IT!](#) (UPCOMING CONFERENCES)



HERE's TO TIGHT LINES & GOOD TIMES in Clean Abundant Water!!!

Respecting our neighbors downstream is what America is all about and it's the NPDES permit that helps us do that! It's OUR CHILDREN that will be living through decisions we make today. NPDES is an investment into our nations future generations so they can also have an equally great place to live, swim, fish, boat, and hunt tomorrow!

"Conservation means development as much as it does protection. I recognize the right and duty of this generation to develop and use the natural resources of our land but I do not recognize the right to waste them, or to rob, by wasteful use, the generations that come after us."



Theodore Roosevelt
Osawatimie, Kansas
August 31, 1910



Sincerely,
NPDES TRAINING INSTITUTE

T. Luke Owen, PG
President

www.npdestraining.com
www.ms4training.com
www.erosiontraining.com
tlowen@npdestraining.com