



IN THIS ISSUE

[MS4 INSPECTOR
CERTIFICATION](#)

[WE SERVE MEALS!](#)

[TOOL BOX - NOIs, NOTs
& PERMITS](#)

Quick Links

[CHECK EXAM RESULTS](#)

[COURSE SCHEDULE](#)

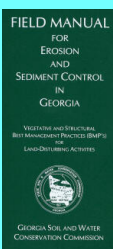
[NEWSLETTER
ARCHIVES](#)



In Georgia, when it comes to buffer protection for state waters, change is always in the wind and often lands in the middle of somebody's business venture. In the case of coastal saltwater marshes, buffer protection is dependent upon an interpretation of the state law. Most agree that buffers for saltwater marshes have been difficult to deal with for land developers and home owners alike, because of the use of something called the "Marsh Jurisdictional Line" which is based more on the presence of salt marsh habitat and not an area of "wrested vegetation".



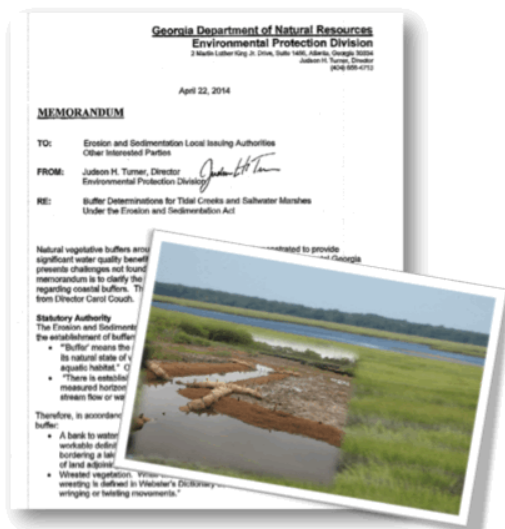
Order Your Field Manual
Today!

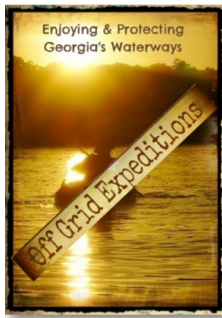


View our videos on [YouTube](#)

[Click here](#) or the photo for the most recent letter issued by Judd Turner, Director of the Georgia Environmental Protection Division that removes the requirement of 25' buffer protection of saltwater marshes when an area of "wrested vegetation" is not present. While wrested vegetation is not defined in the Georgia Erosion and Sedimentation Act (GESA), tens of thousand of certified personnel on in the construction community can tell you that it is defined in the "Field Guide for Determining the Presence of State Waters That Require a Buffer" (Field Guide). As a matter of fact, over 70,000 people in the land development community in Georgia who have received either a Level 1A Fundamentals, Level 1B Advanced Fundamentals, or Level 2 Introduction to Design certification have learned the definition of Wrested Vegetation, as that being defined on Page 2 in the Field Guide that they receive in their certification course, and that it means the "movement of water that removes soil, debris and vegetation, creating a clear demarcation between water flow and vegetative growth" and also that buffers for salt water marshes are measured from the Marsh Jurisdictional Line as determined habitat by employees of the Coastal Resources Division, Georgia Department of Natural Resources.

Is it a good decision or a bad one to remove buffer protection of saltwater marshes when there is not an area of wrested vegetation? When does federal protection of saltwater mashes begin? We all have our opinions about things like this, but one thing we can all agree, is that time will truly tell us if the land and water sacrifices we make today will be good or bad for future of Georgia residents. I think we should ask China and get their perspective on this issue, now that their Ministry for the Environment has said that it may be too late to recover from the





FISH WITH KIDS!



environmental damage they've caused to their land, air and water resources from land development and industrial pollution. As my mentor from the past, Theodore Roosevelt, puts it.....



"I recognize the right and duty of this generation to develop and use the natural resources of our land; but I do not recognize the right to waste them or to rob by wasteful use, the generations that come after us."

Our politicians today should measure every decision they make on our behalf against Theodore Roosevelt's wise counsel.

Spring Online Recert DISCOUNT!!!

From NOW thru June 30th, use the code "spring15" when checking out and you'll receive \$15 off of your online recert training. **Register NOW!**



MS4 CECI Seminar

MS4 Compliance & Enforcement Certified Inspector

The USEPA and Georgia EPD are now committed to speaking at all of our MS4 CECI Courses. Getting a real perspective from the federal and state governments is key to the success of an MS4 operator. Cross trained staff are learning how to effectively perform stormwater inspection and outfall investigations to meet their MS4 Permit requirement. Employees and consultants alike can perform their duties as MS4 Compliance and Enforcement Certified Inspectors and that's a good thing!

Our next class is **June 11th!**

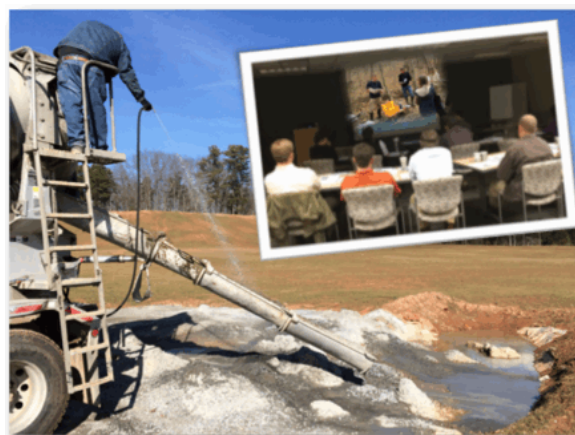
[Click Here](#) or on the photo to sign up online, or call Rita at 678-469-5120 to reserve your spot for the MS4 COMPLIANCE & ENFORCEMENT CERTIFIED INSPECTOR course!



After taking the [MS4 CECI course and passing the exam.....](#), you will receive:

- 1 - a complete Course Book including the Georgia Stormwater Pollution Prevention Manual.
- 2 - EPA's IDDE Manual
- 3 - MS4 CECI Certification Card (with your photo), and
- 4 - Certificate of Completion.

CONTACT US anytime if you have questions or need more information at 678-469-5120 or email us at rita@ms4stormwatertraining.com



REGISTER FOR A COURSE

By attending one of our Level 1A, 1B or II Erosion and Sediment Control Courses, you not only get some of the best stormwater education in the country, but you also receive a **FREE FIELD MANUAL, and current E&S and NPDES information** at all [initial](#) classroom trainings.

- If **SATURDAY** works better for your Level 1A Fundamentals & Level 1A/1B and Level II Re-cert course, we have those too!

SCHEDULE OF COURSES



[CLICK HERE to Register](#)

If you have special requests, We Listen!
678-469-5120
rita@erosiontraining.com

COMPLIANCE TOOL BOX



[2013 NOI & NOT Forms](#)

[2013 FACT SHEET - NPDES General Permit for Construction \(GA\)](#)

[2013 FACT SHEET ADDENDUM - NPDES General Permit for Construction](#)

[2013 GAR100001 - NPDES GENERAL PERMIT - STAND ALONE](#)

[2013 GAR100002 - NPDES GENERAL PERMIT - INFRASTRUCTURE](#)

[2013 GAR100003 - NPDES GENERAL PERMIT - COMMON DEVELOPMENT](#)

[WHO NEEDS TO BE CERTIFIED in GEORGIA - FACT SHEET](#)

[March 5, 2012 Memo for Projects Less than 1-Acre](#)

[2012 303d LIST - GEORGIA](#)

[2007 EPD GUIDANCE TO SWCC DISTRICTS FOR PLAN REVIEWS](#)

[CITY OF ATLANTA - Forms, Checklists & CAD Sample Plans](#)

[2009 MODEL ORDINANCE \(Read Page 7, paragraph C\)](#)

[BUILDING & RENOVATING A POND in GEORGIA](#)

[CONCRETE WASHOUT PROCEDURES](#)

[STATE WATERS \(CCouch Ltr 2004\)](#)

[LOCAL ISSUING AUTHORITIES - NEW FEB 2012 List](#)

[ALTERNATIVE BMP GUIDANCE DOC](#)

[TMDL IMPLEMENTATION PLANS](#)

[STREAMBANK & SHORELINE RESTORATION in GEORGIA](#)

[GESA Exemption #8](#)

[BUFFER VARIANCE REQUIREMENTS FOR DAMS](#)



*Before the Clean Water Act was passed, sediment, sewage, and chemicals caused America's rivers, like the Chattahoochee River, to be void of fish. I wouldn't have dared send my dog into a many of America's waterways to retrieve a bird or tennis ball, but today I'm happy to see my dog swim in most of our rivers, lakes and coastal areas. As **Americans**, we cannot take our eyes off of the importance of paying for our water quality. Strong economic growth through the construction and industrial sectors is key if we are to have clean water in America. Water quality protection as we grow a strong vibrant economy is the end game and key to America's future. With that comes the daily goal of **Respecting our neighbors downstream** because after all, WE ALL LIVE DOWN STREAM! Here's to tight lines, healthy dogs, and good times in clean abundant water!*

There is a lot happening today with water regulations that affect a diverse community of public and private entities. If you have areas of interest that you would like included in this newsletter, please contact us at 678-469-5120.

Sincerely,
NPDES  TRAINING INSTITUTE

A handwritten signature in blue ink, appearing to read "T. Luke Owen".

T. Luke Owen, PG
President/Principal Trainer and Consultant
www.npdestraining.com
www.ms4training.com
www.erosiontraining.com
Luke@npdestraining.com