



When is preventing a little pollution like sediment, wet concrete or cow manure running into a creek, to much of a financial cost? When does it become an unreasonable government rule?

When is a little fertilizer, pesticide or dog poop running from a front yard into a storm drain, end up being to much for the local lake to handle without it being huge problem for people and fish later on?



These are just a few of the questions our country is wrestling with now and probably will be wrestling with forever, but I believe WE must never stop wrestling with them!

Every American should be knowledgeable about what's happening with state and federal waters rules and regulations; and how our elected federal and state government officials choose to address the challenges to the chemical, physical and biological integrity of our nations watersheds. As an American, I want to have clean creeks, rivers, lakes and coastal waters, Lord knows I've been in countries that didn't have them. That said, it doesn't make it easy just because we live in the good ol' USA. I have friends and know of a lot of folks who are good hard working people who work on the land for a living; people like ranchers, timber harvesters, land developers and builders with jobs that can easily damage and pollute watersheds, especially when it rains.

That said then, when is a little pollution to much when it comes to protecting our watersheds and water quality in a country exploding by the millions?

I think the answer is found in changing our paradigm.....as Abraham Lincoln once said, "we must disenthral ourselves" from past notions that clean water is always available, and realistically embrace the work (time, effort and money) that must be invested if we are to

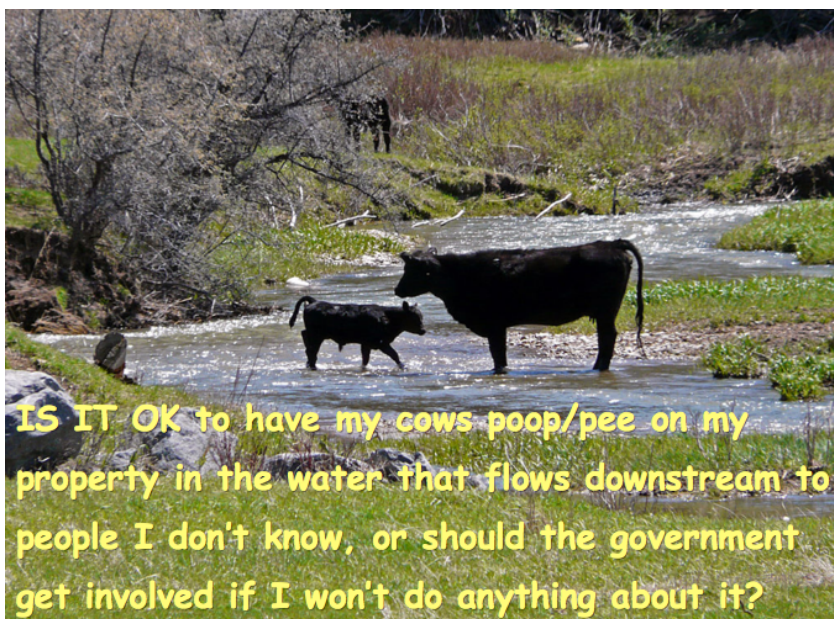


have healthy creeks, rivers, lakes and oceans!

On January 31st, almost 2 weeks ago, the Environmental Protection Agency (EPA) and the Army Corps of Engineers (ACOE) issued a final rule adding an applicability date of February 2020, to the "Clean Water Rules definition of 'Waters of the United States'" (the 2015 WOTUS Rule). With the applicability rule, the agencies intend to maintain the status quo by adding an applicability date to

the 2015 WOTUS Rule with the intent of providing **continuity and regulatory certainty**, while the EPA and ACOE continue to consider possible revisions to the 2015 Rule.

The bottom line is this.....it doesn't look like anything will change from what they are now for at least a couple of years. According to the applicability rule, the EPA & ACOE will administer the regulations in place prior to the 2015 Rule, and will continue to interpret the statutory term "waters of the United States" to mean the waters covered by those regulations, as they are currently being implemented, consistent with Supreme Court decisions and practice, and as informed by applicable agency guidance documents. To read the Applicability Rule, [click here](#).



IS IT OK to have my cows poop/pee on my property in the water that flows downstream to people I don't know, or should the government get involved if I won't do anything about it?

Many Tough Questions with No Easy Answer.

T. Luke Owen, PG [MS4CECI](#)

SAVE 10%

ALL ONLINE & CLASSROOM
COURSES

USE DISCOUNT COUPON CODE
"FEBRUARY 2018 "



Offer Expires 2/28/ 18

Offer Expires February, 2018

NPDES General Permits (click on the following links for GEORGIA)

1 - CONSTRUCTION General Permits

For construction NPDES General Permits you can use the online system submittal, but it will be required this year after July 31, 2018. Within the GEOS site, you will find [upcoming training events](#), [Training Materials](#) (containing detailed Reference Guides and Quick Guides), [Submittal Instructions Video](#), and a [Getting Started Page](#) to assist you in using GEOS for all the NPDES submittal requirements.



2 - MS4 Phase II General Permit (Effective 12-6-17)

Green Infrastructure is heavily implemented in the new MS4 Permit. Please contact Anna Truszczynski at anna.truszczynski@dnr.ga.gov or Lisa Perrett at lisa.perrett@dnr.ga.gov

[Click Here for Draft Red Lined Changes](#)

[Click Here for the Small MS4 Phase II FACT SHEET](#)

3 - INDUSTRIAL General Permit

2017 GUIDANCE FOR MINOR LAND-DISTURBING ACTIVITIES (GAEPD)

The intent of this document is to clarify minor land-disturbing activities as defined in GESA and the NPDES General Permits for Storm Water Discharges Associated with Construction Activity Common Development and Stand Alone Permits, as follows:

[CLICK HERE FOR MORE](#)

IN THIS ISSUE

RECERTIFICATION

[The NEW GREEN BOOK and
FIELD MANUAL](#)

[ONLINE COURSES](#)

[MS4 CECI Course Registration](#)

[STORMWATER CONFERENCES](#)

[AMERICA NEEDS LOCAL
ENFORCEMENT](#)

Quick Links

[CHECK EXAM RESULTS](#)

[COURSE SCHEDULE](#)

[NEWSLETTER ARCHIVES](#)

[BUY THE NEW
2016 FIELD MANUAL](#)



View our videos on [YouTube](#)

Buy Now



[CLICK HERE FOR YOUR
COPY OF THE 2016
GREEN BOOK](#)

IN-CLASSROOM or ONLINE
"FOR THE OUTDOORSMAN IN ALL OF US!"

- > Convenient
- > Easy to Use
- > Available 24/7

GEOLOGICONLINE.COM

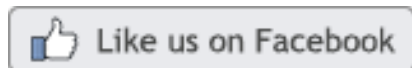


[*Click Here for*](#)

ONLINE RECERTIFICATION TRAINING
CLASSROOM COURSE SCHEDULE

REGISTER FOR A COURSE

EROSIONTRAININGONLINE.COM



View our profile on [LinkedIn](#)



ASSOCIATED GENERAL CONTRACTORS

MANUAL FOR EROSION AND SEDIMENT CONTROL
IN GEORGIA

"THE GREEN BOOK"

2016
6th Edition

Georgia Soil and Water Conservation Commission



P.O. Box 8024
4310 Lexington Rd, Athens, GA 30603
706-552-4470 phone 706-552-4488 fax

www.gswcc.georgia.gov



PROVIDED BY
NPDES Training, Inc.
1000 Peachtree Industrial Blvd., Suite 6-207
Smyrna, GA 30084
www.erosiontraining.com



MS4CECI COURSE

MS4 Compliance & Code Enforcement Certified Inspector
The "OFFICIAL" MS4CECI Course

[CLICK HERE FOR MS4CECI RECERTIFICATION](#)

*FIELD STREAM SURVEY
OUTFALL INSPECTIONS
INDUSTRIAL FACILITY INSPECTIONS
CONSTRUCTION SITE INSPECTIONS*

OR
DOWNLOAD A
FREE COPY *here!*

AS OF JULY 1, 2016
ONLY THE 2016
EDITION GREENBOOK
CAN BE USED in
GEORGIA.

This course meets the MS4 NPDES Permit requirement for
Training & Green Infrastructure

[MARIETTA, GEORGIA](#)
[March 19-20, 2018](#)

[JEFFERSON CITY, MISSOURI](#)
[March 5 - 6, 2018](#)

[INDIANA, SOUTHERN REGION](#)
[JUNE 7 - 8, 2018](#)

[INDIANA, NORTHERN REGION](#)
[JUNE 11-12, 2018](#)

[SAN CLEMENTE, CALIFORNIA](#)
[July 23 - 24, 2018](#)

[MS4CCEI](#) (A shortened stormwater course for TriState Seminar)
[LAS VEGAS, NEVADA](#)
[SEPTEMBER 26th - 27th, 2018](#)



Proud Member of ...

Greater
Atlanta
Home Builders
Association

"THE BEST STORMWATER CLASS I'VE EVER ATTENDED!"
CALL RITA @

678-469-5120 for help registering!

www.MS4stormwatertraining.com



[American Sports Fishing Association](#)

*Read About How
ASFA Works To Help
The American
Angler*



COMPLIANCE TOOL BOX



NPDES Training Institute
"Training That Helps It All Make Sense!"



[Local Government NPDES Enforcement & Plan Review Authority](#)

[GREEN BOOK \(Manual for E&SC in Georgia - New 2016\)](#)

[GREEN BOOK Video Presentation](#)

[WHO NEEDS TO BE CERTIFIED in GEORGIA - FACT SHEET](#)

[March 5, 2012 Memo for Projects Less than 1-Acre](#)

NEW [2014 303d LIST \(Georgia\) - for use as of July, 2016](#)

[EPD GUIDANCE TO SWCC DISTRICTS FOR PLAN REVIEWS](#)

[CITY OF ATLANTA - Green Infrastructure Information, forms, etc.](#)

[BUILDING & RENOVATING A POND in GEORGIA](#)

[TMDL IMPLEMENTATION PLANS](#)

[STREAMBANK & SHORELINE RESTORATION in GEORGIA](#)

[GESA Exemption #8](#)

[BUFFER VARIANCE REQUIREMENTS FOR DAMS](#)



**MORE STORMWATER CONFERENCES &
TRAINING EVENTS**



[SOUTHEAST STORMWATER ASSOCIATION \(SESWA\)](#)
(UPCOMING CONFERENCES)



**NEED HELP with
SEDIMENT BASINS?
CALL JIM SPOTTS
770-216-9514**

southeastenvironment.alconsultants.com



**GEORGIA ASSOCIATION OF WATER
PROFESSIONALS** (UPCOMING CONFERENCES)



GEORGIA RURAL WATER ASSOCIATION (GRWA)
(UPCOMING CONFERENCES)



**INTERNATIONAL EROSION CONTROL ASSOCIATION
SE CHAPTER** (UPCOMING CONFERENCES)



**WATER ENVIRONMENT FEDERATION -
WATERS WORTH IT!** (UPCOMING CONFERENCES)



**INDIANA WATER ENVIRONMENT ASSOCIATION -
UPCOMING CONFERENCES**



TRISTATE SEMINAR (Arizona - California - Nevada)

**INVITATION TO JOIN
THE GEORGIA SOCIETY
OF PROFESSIONAL ENGINEERS**

[CLICK HERE](#) to learn more about GSPE.

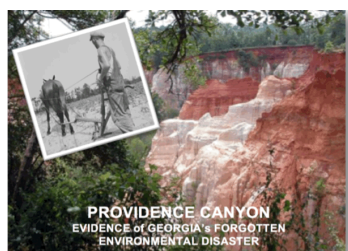
Betty Jean Jordan, PE
Executive Director
Georgia Society of Professional Engineers

165 Courtland Street, Suite A 235
Atlanta, GA 30303
(404) 840-2542

<https://www.facebook.com/gspeorg/>



**We are proud to have Betty Jean as one of our
Stormwater Trainers.**



[Click here](#) to register for your Level II Certification or Recertification Course.

HERE's TO TIGHT LINES & GOOD TIMES in Clean Abundant Water!!!

Let us ALWAYS remember that Freedom and Liberty are not free. People have sacrificed their lives and are sacrificing their lives today that give us what we so often take for granted!

Similarly, respecting our neighbors downstream and the critters that are trying to live in our urban watersheds is more important now than ever! Respecting those downstream from our actions is what America is all about, and it's compliance with NPDES Permits that prove our respect.



"It's OUR CHILDREN that will be living through decisions we make today."

NPDES TRAINING INSTITUTE

T. Luke Owen, PG
President

www.npdestraining.com
www.ms4training.com
www.erosiontraining.com
tlowen@npdestraining.com