



WHY SHOULD YOU CARE that EPA issued the final 2017 Construction General Permit (CGP) on Wednesday, January 11, 2017. THIS IS WHY..... Many states use the USEPAs Construction General Permit as a template for possible changes they will make when their permits expire. The issue with that, is this.....the USEPA is the permitting authority for just a handful of states, forty six to be exact, and Georgia is not one of them.



The CGP took effect on February 16, 2017 and will last for five years. It is similar to the 2012 CGP it replaces and includes discharge limitations and requirements for self-inspections, corrective actions, staff training, and development of a Stormwater Pollution Prevention Plan. It also includes several new protections such as requiring waste containers to have lids or cover when not in use or at the end of the business day, requiring controls to minimize exposure of building materials containing PCBs to precipitation and stormwater, and requiring large disturbances to be stabilized faster.

Georgia's CGP will expire July 31, 2018. As we grow as one of the fastest growing states in the country, I believe it's not so much what Georgia's may or may not add to their CGP, it's more about how they decide to continue to defund the state programs intended to protect our water quality. Given that sediment is filling up our reservoirs, one's containing water for a growing population, it's important more now than ever, that land disturbing activities feel they are accountable for protecting our future quality of life.

[MORE](#)

Water Pollution Responsible for Deformed Bass



The Susquehanna River's decade-long mutant bass mystery moved a cast closer to a solution with the release of study findings that for the first time identified herbicides and endocrine-disrupting compounds from agricultural sources as likely causes.

The multi-year study released Monday by the state Department of Environmental Protection and the Pennsylvania Fish and Boat Commission also found that pathogens and parasites are probable contributors to the mutations and population decline afflicting what was once

one of the best bass fisheries in the eastern U.S. [MORE](#)

UPCOMING CLASSES

WE PROVIDE CUSTOMIZED ONSITE TRAINING AT YOUR FACILITY

Course Calendar													
March 2017													
Search for Courses	Sunday	Monday	Tuesday	Wednesday	Thursday	Friday	Saturday						
ZIP/Postal Code Events Within 5 Miles				March 1	Certified MS4 Compliance &	Level 1A Fundamentals	Level 1A Fundamentals						
Course Selection						Level 1A Fundamentals	Level 1A Fundamentals						
Show All						Level 1A Fundamentals	Level 1A Fundamentals						
Location City						Level 1A Fundamentals	Level 1A Fundamentals						
Show All						Level 1A Fundamentals	Level 1A Fundamentals						
View by						Level 1A Fundamentals	Level 1A Fundamentals						
Month (Sun-Sat)						Level 1A Fundamentals	Level 1A Fundamentals						
Starting on						Level 1A Fundamentals	Level 1A Fundamentals						
February 2017						Level 1A Fundamentals	Level 1A Fundamentals						
Search Clear						Level 1A Fundamentals	Level 1A Fundamentals						



Level 1A Fundamentals (Blue Card) [Click Here](#)

March 2 - Norcross
 March 3 - Conyers
 March 3 - Lawrenceville
 March 9 - Atlanta
 March 10 - Marietta
 March 14 - Marietta RECERTIFICATION
 March 16 - Cartersville
 March 17 - Cartersville RECERTIFICATION
 March 20 - Columbus
 March 21 - Columbus RECERTIFICATION
 March 24 - Augusta
 March 24 - Norcross
 March 24 - Gainesville
 March 28 - Norcross RECERTIFICATION
 March 31 - Tifton

Level 1B Advanced Fundamentals (Red Card) [Click Here](#)

March 14 - Marietta RECERTIFICATION
 March 17 - Cartersville RECERTIFICATION

March 21 - Columbus RECERTIFICATION
March 27 & 28 - Norcross
March 28 - Norcross RECERTIFICATION

Level II Introduction to Design (Tan/Gray Card) [Click Here](#)

for Design Pro's (Tan Card) and Plan Reviewers (Gray Card)

March 13 & 14 - Marietta
March 14 - Marietta RECERTIFICATION
March 17 - Cartersville RECERTIFICATION
March 21 - Columbus RECERTIFICATION
March 28 - Norcross RECERTIFICATION

MS4 Compliance Enforcement Certified Inspector (MS4CECI)

March 2-3, Tempe, Arizona
March 6-7, Marietta, Georgia

Save 10%

2017

**MARCH - STATEWIDE
RECERTIFICATION IN-CLASSROOM COURSES**

OR

**APRIL - SAVANNAH
FULL or RECERT IN-CLASSROOM COURSES**

**USE COUPON CODE
"SPRING10PERCENT"**

You must contact Rita at 678-469-5120 for your discount

Offer Expires: March 31, 2017

IN THIS ISSUE

[DEFORMED BASS](#)

[UPCOMING CLASSES](#)

[The NEW GREEN BOOK and
FIELD MANUAL](#)

[MS4 CECI Course Registration](#)

[WHY IS CERTIFICATION
IMPORTANT?](#)

[AMERICA NEEDS LOCAL
ENFORCEMENT](#)

[ONLINE COURSES](#)

[STORMWATER CONFERENCES](#)

Quick Links

[CHECK EXAM RESULTS](#)

[COURSE SCHEDULE](#)

[NEWSLETTER ARCHIVES](#)

MS4 CECI COURSE

***NEW MODULE
GREEN INFRASTRUCTURE***

**This course meets the MS4 NPDES Permit requirement for
training & *Green Infrastructure*.**

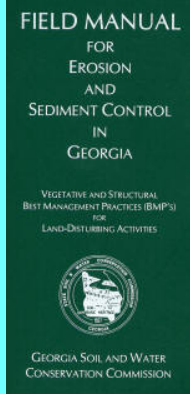
**TEMPE, ARIZONA
MARCH 2nd - 3rd, 2017**

**MARIETTA, GEORGIA
MARCH 6th - 7th, 2017**

**INDIANAPOLIS, INDIANA
AUGUST 10th - 11th, 2017
*CALL RITA to REGISTER!***

**BUY THE NEW 2016 FIELD
MANUAL**

The NEW 2016 version of the
FIELD MANUAL. It is NOT THE
GREENBOOK.

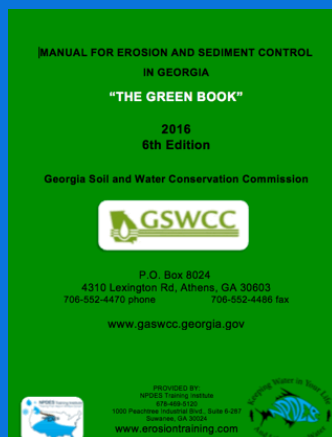


View our videos on 

Buy Now



**CLICK HERE FOR YOUR
COPY OF THE 2016
GREEN BOOK**



**OR
DOWNLOAD A
FREE COPY here!**

**AS OF JULY 1, 2016
ONLY THE 2016 EDITION**

LAS VEGAS, NEVADA
SEPTEMBER 26th - 28th, 2017
CALL RITA to REGISTER!



***"THE BEST
STORMWATER CLASS
I'VE EVER ATTENDED!"***

CALL RITA @ 678-469-5120 for help registering!

**WHY IS CONSTRUCTION SITE
CERTIFICATION SO IMPORTANT?**



Certification works when it's viewed like it's a drivers license. The certificate or card demonstrates a person's ability to properly **design, install & maintain** the erosion, sediment and pollution control plan that makes sense & complies with the rules & regulations on the road; rules that have been put in place because of the huge potential damage to people and the environment if sediment is allowed to leave a construction site in an irresponsible manner.

Being certified is like being licensed to operate a vehicle or heavy equipment. Your card demonstrates your professional ability to perform your duties in a highly professional manner, so your actions do not damage the financial health of your employer, people downstream, or the health of our watersheds.

Certification shows others that you know what you're doing and understand the legal and technical implications behind an NPDES Permitting program that holds people accountable for the damage their land disturbances can cause to others downstream!

If you really want to know the WHY behind your erosion and sediment control service to our country and WHY it is SO IMPORTANT, take a class from the NPDES Training Institute .
WE GUARANTEE OUR TRAINING!

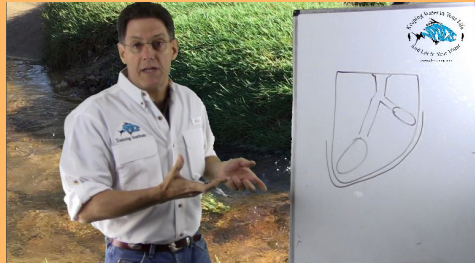
We are a company that ALWAYS gives you more than you expect, where you NEVER PAY MORE THAN ONCE!

Visit us at www.npdestraining.com OR
Call Rita at 678-469-5120

GREENBOOK CAN BE
USED in GEORGIA.

Proud Member of ...

Greater
Atlanta
Home Builders
Association



LOCAL ENFORCEMENT Is Critical to America's FUTURE Quality of Life

Our History with the Clean Water Act has proven over and over again that accountability for water quality permits is a must! It's clear to see the Georgia EPD is under funded as proven by the small number of inspectors they've employed in one of the fastest growing states in the country. America is tremendously reliant on local enforcement efforts that ensure our streams, rivers, lakes and coasts are protected.

Research shows:

5% will violate water quality laws no matter what,

20% will comply with water quality laws no matter what, and

75% will comply only with effective local enforcement!

"Improving the Efficiency and Effectiveness of Compliance Monitoring and Enforcement of Environmental Policies"

Cheryl Wasserman



RECERTIFICATION
IN-CLASSROOM or ONLINE
"FOR THE OUTDOORSMAN IN ALL OF US!"

**The
Weather
Channel**



**smart
WATERSHEDS**
FOR CLEAN RIVERS AND STREAMS

- > Convenient
- > Easy to Use
- > Available 24/7

GEOLOGICONLINE.COM



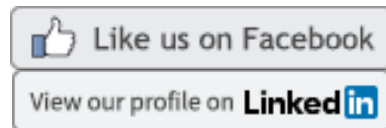
[Click Here for](#)

ONLINE RECERTIFICATION TRAINING

CLASSROOM COURSE SCHEDULE

SIGN UP FOR A FOR A COURSE

EROSIONTRAININGONLINE.COM



ASSOCIATED GENERAL CONTRACTORS



GREATER ATLANTA HOME BUILDERS



**NEED HELP with
DUST CONTROL,
SEDIMENT BASINS?
CALL JIM SPOTTS**

770-216-9514

southeastenvironmentalconsultants.com



COMPLIANCE TOOL BOX



NPDES Training Institute
"Training That Helps It All Make Sense!"



Local Government NPDES Enforcement & Plan Review Authority

GREEN BOOK (Manual for E&SC in Georgia - New 2016)

GREEN BOOK Video Presentation

WHO NEEDS TO BE CERTIFIED in GEORGIA - FACT SHEET

March 5, 2012 Memo for Projects Less than 1-Acre

NEW 2014 303d LIST (Georgia) - for use as of July, 2016

EPD GUIDANCE TO SWCC DISTRICTS FOR PLAN REVIEWS

CITY OF ATLANTA - Forms, Checklists & CAD Sample Plan

BUILDING & RENOVATING A POND in GEORGIA

TMDL IMPLEMENTATION PLANS

STREAMBANK & SHORELINE RESTORATION in GEORGIA

GESA Exemption #8

BUFFER VARIANCE REQUIREMENTS FOR DAMS



**MORE STORMWATER CONFERENCES &
TRAINING EVENTS**



SOUTHEAST STORMWATER ASSOCIATION (SESWA)
(UPCOMING CONFERENCES)



**GEORGIA ASSOCIATION OF WATER
PROFESSIONALS** (UPCOMING CONFERENCES)



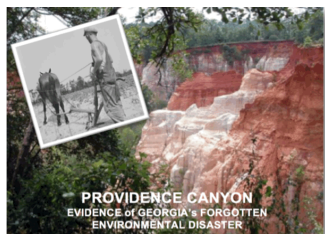
GEORGIA RURAL WATER ASSOCIATION (GRWA)
(UPCOMING CONFERENCES)



INTERNATIONAL EROSION CONTROL ASSOCIATION
SE CHAPTER (UPCOMING CONFERENCES)



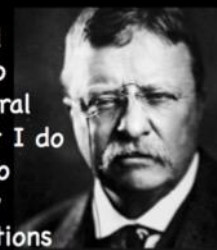
WATER ENVIRONMENT FEDERATION -
WATERS WORTH IT! (UPCOMING CONFERENCES)



***HERE's TO TIGHT LINES & GOOD TIMES
in Clean Abundant Water!!!***

Respecting our neighbors downstream is what America is all about and it's the NPDES permit that helps us do that! It's OUR CHILDREN that will be living through decisions we make today. NPDES is an investment into our nations future generations so they can also have an equally great place to live, swim, fish, boat, and hunt tomorrow!

"Conservation means development as much as it does protection. I recognize the right and duty of this generation to develop and use the natural resources of our land but I do not recognize the right to waste them, or to rob, by wasteful use, the generations that come after us."



Theodore Roosevelt
Osawatomie, Kansas
August 31, 1910



Sincerely,
NPDES TRAINING INSTITUTE

T. Luke Owen, PG
President

www.npdestraining.com
www.ms4training.com
www.erosiontraining.com
tlowen@npdestraining.com