



DECEMBER 2017 Newsletter



Trout Can't Reproduce When Their Eggs are Buried...
"Let's keep the dirt out of our creeks!"



www.npdestraining.com

www.NPDEstraining.com

www.Erosiontraining.com

www.MS4training.com

678-469-5120

"What should you do about site inspections & water sampling when it snows?", is a question that should be asked by NPDES site inspectors after a weekend that dumped 6" snow in Georgia. For northern parts of the country 6" of snow is laughable, but not in Georgia. While a one-inch rain produces a little over 27,000 gallons of water/acre; 1-inch of snow produces various amounts of water depending on air temperature and various other factors.

Georgia's NPDES General Permits do not require extra inspections or water sampling when it snows. That said, it doesn't mean there aren't significant impacts that can occur from the snowmelt runoff itself. When snow melts and runs off site or saturates soils on site causing slope failure. Snow melt runoff can be a cause unexpected impacts to construction schedules/site maintenance expenses with resulting watershed disasters.

As a construction superintendent or site compliance inspector ([Level 1A Blue Card](#) certified in Georgia), the potential impacts downstream from snow melt are real. Performing inspections is necessary to mitigate potential damage to BMPs (silt fence, mulch, sediment basins, etc.) that can be disabled from high volumes of sediment in the snowmelt runoff. Don't forget sheet erosion produces, on average, more sediment than the other three (splash, rill or gully) types of erosion.

Daily, weekly and monthly NPDES inspections and resulting maintenance of BMPs must continue regardless of amount of rain or snowmelt your project encounters. It's a good idea to visit the



General Permit
No. GAR10001

Georgia
Natural Resources
Section Division

Discharge Under The
Age Elimination System
Used With Construction Activity
Construction Projects

A Water Quality Control Act (Georgia Law
"State Act," the Federal Clean Water Act, and
the "Clean Water Act," and the Rules and
and Acts, new and existing storm water point
sources to have a permit, upon submittal of a
storm water associated with construction activity
in accordance with the limitations, monitoring
is 1 through VI listed.

This permit shall become effective on September 24, 2013.

This permit and the authorization to discharge shall expire at midnight, July 31, 2018.

Signed this 23rd day of September 2013




Director
Environmental Protection Division



Lake Allatoona Tributary

site after it snows, investigate and/or mitigate the potential damage that might occur to BMPs that have a potential impact to the downhill permitter of the site. **Proper Design, Installation & Maintenance of your site plan and related BMPs is more important now than ever.**

T. Luke Owen, PG MS4CECI

SAVE 10%



ALL ONLINE & CLASSROOM
COURSES

USE DISCOUNT COUPON CODE
"CHRISTMAS 2017"

*Register for
a Course*

Offer Expires December 31, 2017

GEORGIA's NPDES General Permits (click on the following links)

[1 - CONSTRUCTION General Permits](#)

[2 - MS4 Phase II General Permit \(Effective December 6, 2017\)](#)

Green Infrastructure is heavily implemented in the new MS4 Permit. Please contact Anna Truszczynski at anna.truszczynski@dnr.ga.gov or Lisa Perrett at lisa.perrett@dnr.ga.gov

[Click Here for Draft Red Lined Changes](#)

[Click Here for the Small MS4 Phase II FACT SHEET](#)

[3 - INDUSTRIAL General Permit](#)

[2017 GUIDANCE FOR MINOR LAND-DISTURBING ACTIVITIES \(GAEPD\)](#)

The intent of this document is to clarify minor land-disturbing activities as defined in GESA and the NPDES General Permits for Storm Water Discharges Associated with Construction Activity Common



Development and Stand Alone Permits, as follows:
[CLICK HERE FOR MORE](#)

IN THIS ISSUE

[The NEW GREEN BOOK and
FIELD MANUAL](#)

[ONLINE COURSES](#)

[MS4 CECI Course Registration](#)

[AMERICA NEEDS LOCAL
ENFORCEMENT](#)

[STORMWATER CONFERENCES](#)

Quick Links

[CHECK EXAM RESULTS](#)

[COURSE SCHEDULE](#)

[NEWSLETTER ARCHIVES](#)

[BUY THE NEW 2016 FIELD MANUAL](#)

It is NOT THE GREEN BOOK.



View our videos on YouTube

Buy Now



[CLICK HERE FOR YOUR
COPY OF THE 2016
GREEN BOOK](#)

RECERTIFICATION IN-CLASSROOM or ONLINE *"FOR THE OUTDOORSMAN IN ALL OF US!"*

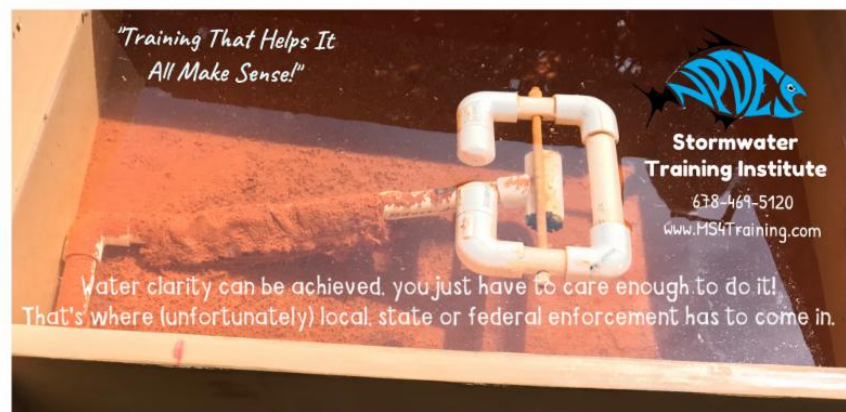
- > Convenient
- > Easy to Use
- > Available 24/7

[GEOLOGICONLINE.COM](#)



[Click Here for](#)

ONLINE RECERTIFICATION TRAINING



ILLEGAL

vs

IMPROPER

[CLASSROOM COURSE SCHEDULE](#)

[REGISTER FOR A COURSE](#)

[EROSIONTRAININGONLINE.COM](#)

MANUAL FOR EROSION AND SEDIMENT CONTROL
IN GEORGIA

"THE GREEN BOOK"

2016
6th Edition

Georgia Soil and Water Conservation Commission



P.O. Box 8024
4310 Lexington Rd, Athens, GA 30603
706-552-4470 phone 706-552-4488 fax
www.gswcc.georgia.gov



PROVIDED BY:
NPDES Training, Inc.
100 Peachtree Industrial Blvd., Suite 6-207
Savannah, GA 30324
www.erosiontraining.com



Like us on Facebook

View our profile on **LinkedIn**



ASSOCIATED GENERAL CONTRACTORS

OR
DOWNLOAD A
FREE COPY *here!*

AS OF JULY 1, 2016
ONLY THE 2016
EDITION GREENBOOK
CAN BE USED in
GEORGIA.

Proud Member of ...

Greater
Atlanta
Home Builders
Association

MS4 CECI COURSE

MS4 Compliance & Code Enforcement Certified Inspector
The "OFFICIAL" MS4CECI Course

[CLICK HERE FOR MS4CECI RECERTIFICATION](#)

***FIELD STREAM SURVEY
OUTFALL INSPECTIONS
INDUSTRIAL FACILITY INSPECTIONS
CONSTRUCTION SITE INSPECTIONS***

This course meets the MS4 NPDES Permit requirement for
Training & Green Infrastructure

[ALANTA, GEORGIA](#)
[December 18 - 19, 2017](#)

[JEFFERSON CITY, MISSOURI](#)
[March 5 - 6, 2018](#)

[SAN CLEMENTE, CALIFORNIA](#)
[March 12 - 13, 2018](#)

[MS4CCEI \(A shortened stormwater course for TriState Seminar\)](#)
[LAS VEGAS, NEVADA](#)
[SEPTEMBER 26th - 27th, 2018](#)



**"THE BEST STORMWATER CLASS
I'VE EVER ATTENDED!"
CALL RITA @**

678-469-5120 for help registering!

www.MS4stormwatertraining.com

**INVITATION TO JOIN
THE GEORGIA SOCIETY
OF PROFESSIONAL ENGINEERS**

**[CLICK HERE](#) for more information on what GSPE
can do for you.**

Betty Jean Jordan, PE
Executive Director
Georgia Society of Professional Engineers

165 Courtland Street, Suite A 235
Atlanta, GA 30303
(404) 840-2542

<https://www.facebook.com/gspeorg/>

NSPE-GA™ GEORGIA SOCIETY OF
PROFESSIONAL ENGINEERS



**We are proud to have Betty Jean as one of our
top Level II Design Professional Trainers.**

**[Click here](#) to register for your Level II Certification
or Recertification Course.**

**Regulatory Enforcement on a Local Level
Is Critical to America's Water Quality**

Clean water laws don't matter unless people comply and enforce them. Human nature proves over and over again that accountability for compliance is when they are actually effective.





Today, it appears the Georgia EPD is tremendously under funded as proven by the small number of inspectors they've employed in one of the fastest growing states in the country.

Georgia is reliant on knowledgeable **local enforcement efforts** that ensure our streams, rivers and lakes are protected.

US EPA Research shows:

5% will violate water quality laws no matter what,

20% will comply with water quality laws no matter what, and

75% will comply only with effective local enforcement!

"Improving the Efficiency and Effectiveness of Compliance Monitoring and Enforcement of Environmental Policies"

Cheryl Wasserman



COMPLIANCE TOOL BOX



NPDES Training Institute
"Training That Helps It All Make Sense!"



Local Government NPDES Enforcement & Plan Review Authority

GREEN BOOK (Manual for E&SC in Georgia - New 2016)

GREEN BOOK Video Presentation

WHO NEEDS TO BE CERTIFIED in GEORGIA - FACT SHEET



**NEED HELP with
SEDIMENT BASINS?
CALL JIM SPOTTS
770-216-9514**

southeastenvironmentalconsultants.com



[March 5, 2012 Memo for Projects Less than 1-Acre](#)

NEW [2014 303d LIST \(Georgia\) - for use as of July, 2016](#)

[EPD GUIDANCE TO SWCC DISTRICTS FOR PLAN REVIEWS](#)

CITY OF ATLANTA - [Green Infrastructure Information, forms, etc.](#)

[BUILDING & RENOVATING A POND in GEORGIA](#)

[TMDL IMPLEMENTATION PLANS](#)

[STREAMBANK & SHORELINE RESTORATION in GEORGIA](#)

[GESA Exemption #8](#)

[BUFFER VARIANCE REQUIREMENTS FOR DAMS](#)



MORE STORMWATER CONFERENCES & TRAINING EVENTS



[SOUTHEAST STORMWATER ASSOCIATION \(SESWA\)](#)
(UPCOMING CONFERENCES)



[GEORGIA ASSOCIATION OF WATER PROFESSIONALS](#) (UPCOMING CONFERENCES)



[GEORGIA RURAL WATER ASSOCIATION \(GRWA\)](#)
(UPCOMING CONFERENCES)



[INTERNATIONAL EROSION CONTROL ASSOCIATION](#)
SE CHAPTER (UPCOMING CONFERENCES)



[WATER ENVIRONMENT FEDERATION](#) -
WATERS WORTH IT! (UPCOMING CONFERENCES)



INDIANA WATER ENVIRONMENT ASSOCIATION - UPCOMING CONFERENCES

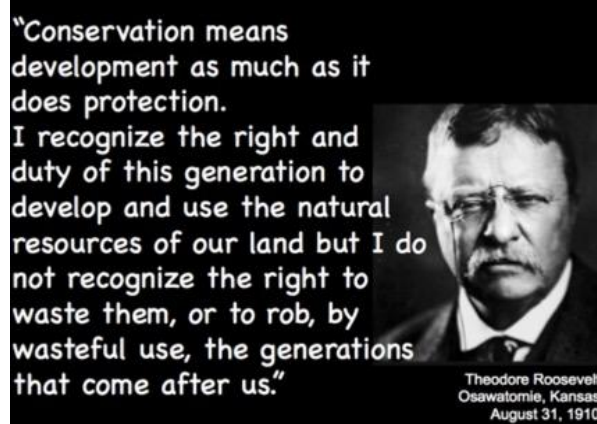


TRISTATE SEMINAR (Arizona - California - Nevada)

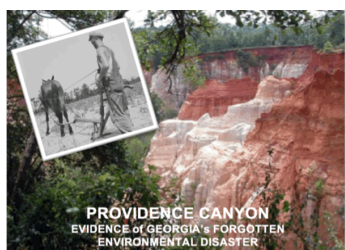
HERE's TO TIGHT LINES & GOOD TIMES in Clean Abundant Water!!!

Let us ALWAYS remember that Freedom and Liberty are not free. People have sacrificed their lives and are sacrificing their lives today that give us what we so often take for granted today.

Similarly, respecting our neighbors downstream and the critters that are trying to live in our urban watersheds is more important now than ever! Respecting those downstream from our actions is what America is all about, and it's compliance with NPDES Permits that prove our respect.
It's OUR CHILDREN that will be living through decisions we make today.



Sincerely,
NPDES TRAINING INSTITUTE



[Signature]



T. Luke Owen, PG
President
www.npdestraining.com
www.ms4training.com
www.erosiontraining.com
tlowen@npdestraining.com