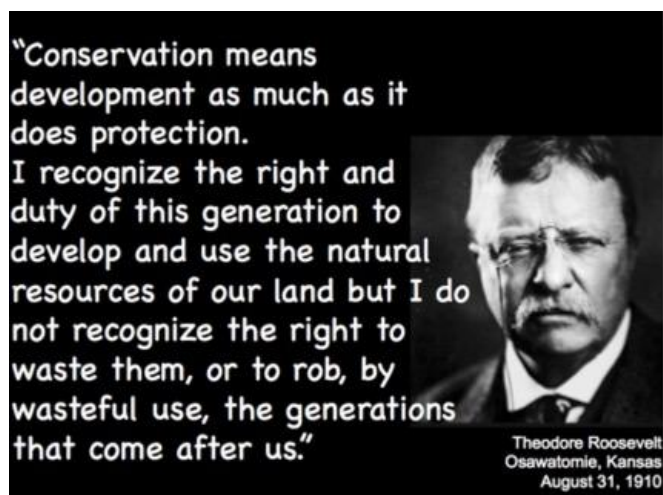




Theodore Roosevelt said it best.....

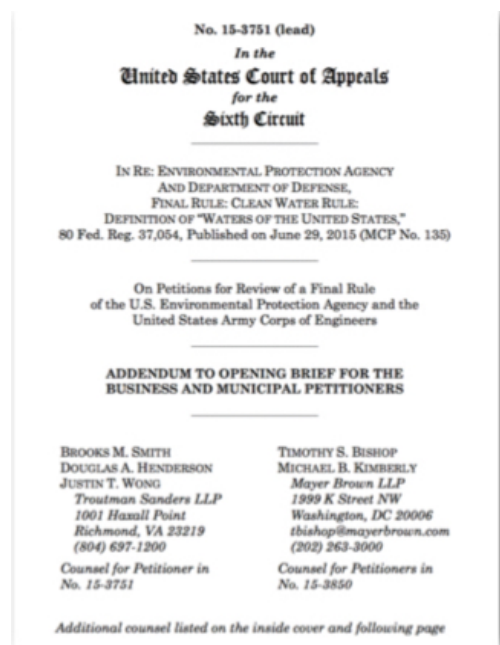


As our nation struggles to find balance between economic growth and environmental protection for our quality of life, what comes to your mind when you read the words erosion & sediment control, MS4 NPDES Permit compliance & enforcement, or **United States Environmental Protection Agency (EPA)**? Do you think about America having better water quality than most of the world because of federal, state and local environmental enforcement; or do you believe we don't need laws that make people accountable for poor water quality they created?

What do you think of the EPAs recent efforts to redefine Waters of the United States (WOTUS)? A lot of organizations, both public and private, have challenged the EPAs efforts to redefine WOTUS, Click Here to view the [petition to the 6th circuit court of appeals](#).

In 2017, lets all help people learn to support efforts to improve and maintain America's water quality. It's important today and even more important tomorrow!

*Call Rita or Tami with any questions you might have at 678-469-5120, or go to [www.erosiontraining.com](http://www.erosiontraining.com) to schedule yourself or your organization for one of our courses.*



# MS4 CECI COURSE

This course meets the MS4 NPDES Permit requirement for training.

**JOIN US FOR A CLASSROOM & FIELD EXPERIENCE** that hundreds of MS4 Inspectors have said is the "Best Stormwater Course" they've ever attended!

**TEMPE, ARIZONA - [CLICK HERE TO REGISTER MARCH 2nd - 3rd, 2017](#)**

**MARIETTA, GEORGIA - [CLICK HERE to REGISTER MARCH 6th - 7th, 2017](#)**

**LAS VEGAS, NEVADA**  
**REGISTER SEPTEMBER 26th - 28th, 2017**  
*CALL RITA to register for this seminar*



**CALL RITA at 678-469-5120 if you need help registering!**

## **IN THIS ISSUE**

[MS4 CECI Course Registration](#)

[QUESTIONS & ANSWERS](#)

[6th EDITION GREENBOOK](#)

[The NEW GREEN BOOK and  
FIELD MANUAL](#)

## **Clean Water Act Enforcement** **US EPA**

[DUST CONTROL HELP](#)  
[CLEAN WATER VIOLATIONS](#)  
[ONLINE COURSES](#)  
[COMMON CONSTRUCTION SITE VIOLATIONS!](#)  
[COMPLIANCE TOOL BOX](#)  
[STORMWATER CONFERENCES](#)  
[CLEAN WATER & HUMAN NATURE](#)

## Quick Links

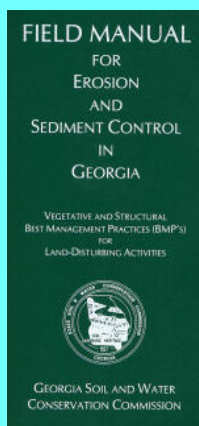
[CHECK EXAM RESULTS](#)

[COURSE SCHEDULE](#)

[NEWSLETTER ARCHIVES](#)

## BUY THE NEW 2016 FIELD MANUAL

The NEW 2016 version of the FIELD MANUAL. It is NOT THE GREENBOOK.



View our videos on [YouTube](#)

**Buy Now**



[CLICK HERE FOR YOUR COPY OF THE 2016 GREEN BOOK](#)



## Princess Cruise Lines to Pay Largest-Ever Criminal Penalty for Deliberate Vessel Pollution

*Company to Implement Remedial Measures on All Carnival Companies Visiting U.S. Ports*

Princess Cruise Lines Ltd. plead guilty and agreed to pay a **\$40 million penalty**, the largest criminal penalty ever from a cruise line, for the deliberate illegal discharge of oil contaminated waste, and intentional acts to cover it up. [MORE](#)

## GA EPD - Illegal Pond Construction



Facility:	Ripley Pond Site Construction Project
Location:	Brooks County
Order Number:	EPD-WQ-8199
Date of Issue:	November 17, 2016
Cause of Order:	Failure to comply with NPDES general permit for Construction activities; Stream Buffer Encroachment
Requirement(s) of Order:	w/in 5 days implement BMPs; w/in 30 days provide stream bank stabilization
Settlement Amount:	\$3700.00

*Not actual pond*

**RECERTIFICATION  
 IN-CLASSROOM or ONLINE  
 "FOR THE OUTDOORSMAN IN ALL OF US!"**



MANUAL FOR EROSION AND SEDIMENT CONTROL  
IN GEORGIA

"THE GREEN BOOK"

2016  
6th Edition

Georgia Soil and Water Conservation Commission



P.O. Box 8024  
4310 Lexington Rd, Athens, GA 30603  
706-552-4470 phone 706-552-4486 fax

www.gswcc.georgia.gov



PROVIDED BY:  
NPDES Training Institute  
1500 Peachtree Industrial Blvd., Suite 6-287  
Savannah, GA 30339  
www.erosiontraining.com



- > Convenient
- > Easy to Use
- > Available 24/7

GEOLOGICONLINE.COM



[Click Here for](#)

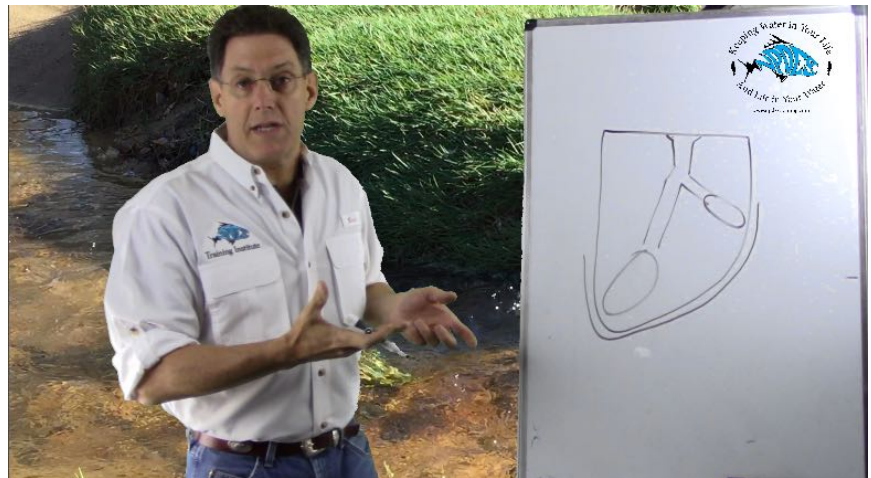
## ONLINE RECERTIFICATION TRAINING

OR  
DOWNLOAD A  
**FREE COPY** here!

AS OF JULY 1, 2016  
ONLY THE 2016  
EDITION GREENBOOK  
CAN BE USED in  
GEORGIA.

Proud Member of ...

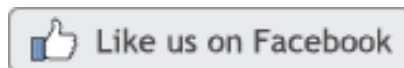
Greater  
**Atlanta**  
**Home Builders**  
Association



**CLASSROOM COURSE SCHEDULE**

**SIGN UP FOR A FOR A COURSE**

**EROSIONTRAININGONLINE.COM**



View our profile on **LinkedIn**



**ASSOCIATED GENERAL CONTRACTORS**



**GREATER ATLANTA HOME BUILDERS**

## COMMON CONSTRUCTION SITE VIOLATIONS THE USEPA WANTS YOU TO KNOW ABOUT so You Don't Make the Mistakes Others Have Made!



**DOCUMENTATION, DOCUMENTATION,  
HONEST DOCUMENTATION!**

### USEPA ISSUES FINAL PHASE 2 MS4 PERMIT

The Environmental Protection Agency (EPA) is revising the regulations governing regulated small municipal separate storm sewer system (MS4) permits to respond to a remand from the United States Court of Appeals for the Ninth Circuit in



*Environmental Defense Center, et al. v. EPA*, 344 F.3d 832 (9th Cir. 2003). In that decision, the court determined the following:

- 1) the regulations for providing coverage under small MS4 general permits did not provide for adequate public notice and opportunity to request a hearing, additionally
- 2) the court found EPA failed to require permitting authority review of the best management practices (BMPs) to be used at a particular MS4 to ensure that the small MS4 permittee reduces pollutants in the discharge from their systems to the "maximum extent practicable" (MEP). The final rule establishes two alternative approaches a permitting authority can use to issue National Pollutant Discharge Elimination (NPDES) general

permits for small MS4s and meet the requirements of the court remand.

The signed rule represents **the most flexible alternative** considered by the Agency as far as NPDES MS4 permit holders are concerned.

[MORE](#)

---

## COMPLIANCE TOOL BOX



[Local Government NPDES Enforcement & Plan Review Authority](#)

[GREEN BOOK \(Manual for E&SC in Georgia - New 2016\)](#)

[GREEN BOOK Video Presentation](#)

[2013 NOI & NOT Forms](#)

[2013 FACT SHEET - NPDES General Permit for Construction \(GA\)](#)

[2013 FACT SHEET ADDENDUM - NPDES General Permit for Construction](#)

[WHO NEEDS TO BE CERTIFIED in GEORGIA - FACT SHEET](#)

[March 5, 2012 Memo for Projects Less than 1-Acre](#)

**NEW** [2014 303d LIST \(Georgia\) - for use as of July, 2016](#)

[EPD GUIDANCE TO SWCC DISTRICTS FOR PLAN REVIEWS](#)

[CITY OF ATLANTA - Forms, Checklists & CAD Sample Plan](#)

[BUILDING & RENOVATING A POND in GEORGIA](#)

[TMDL IMPLEMENTATION PLANS](#)

[STREAMBANK & SHORELINE RESTORATION in GEORGIA](#)

[GESA Exemption #8](#)

[\*\*BUFFER VARIANCE REQUIREMENTS FOR DAMS\*\*](#)

---





Questions about  
DUST CONTROL?  
CALL JIM SPOTTS  
770-216-9514

southeastenvironment  
alconsultants.com



## MORE STORMWATER CONFERENCES & TRAINING EVENTS



[SOUTHEAST STORMWATER ASSOCIATION \(SESWA\)](#)  
(UPCOMING CONFERENCES)



[GEORGIA ASSOCIATION OF WATER PROFESSIONALS](#) (UPCOMING CONFERENCES)



[GEORGIA RURAL WATER ASSOCIATION \(GRWA\)](#)  
(UPCOMING CONFERENCES)



[INTERNATIONAL EROSION CONTROL ASSOCIATION](#)  
SE CHAPTER (UPCOMING CONFERENCES)



[WATER ENVIRONMENT FEDERATION](#) -  
WATERS WORTH IT! (UPCOMING CONFERENCES)

### Stormwater Permit Compliance & Enforcement is CRITICAL to America's Future Quality of Life

Our population is tremendously r eliant on **state enforcement** and even more on quality local enforcement efforts to ensure our streams, rivers, lakes and coasts.

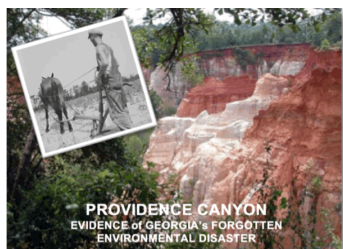
*A persons property value and physical health down stream is just as important to that land owner, as profitability & quality of life is to the land developer up stream!*

**Research shows:**

5% will violate water quality laws no matter what,

20% will comply with water quality laws no matter what, and





**75% will comply only if** their is local enforcement and compliance is perceived as non-arbitrary.

*"Improving the Efficiency and Effectiveness of Compliance Monitoring and Enforcement of Environmental Policies"*

Cheryl Wasserman

## HERE's TO TIGHT LINES & GOOD TIMES in Clean Abundant Water!!!

*Respecting our neighbors downstream is what America is all about and it's the NPDES permit that helps us do that! It's OUR CHILDREN that will be living through decisions we make today. NPDES is an investment into our nations future generations so they can also have an equally great place to live, swim, fish, boat, and hunt tomorrow!*



**Sincerely,**  
NPDES TRAINING INSTITUTE

T. Luke Owen, PG  
President

[www.npdestraining.com](http://www.npdestraining.com)  
[www.ms4training.com](http://www.ms4training.com)  
[www.erosiontraining.com](http://www.erosiontraining.com)  
[tlowen@npdestraining.com](mailto:tlowen@npdestraining.com)