



DECEMBER 2015 NEWSLETTER



The Transition Period for Implementing the New Green Book in 2016

On January 1st, 2016, revisions to the Manual for Erosion and Sediment Control in Georgia (the Green Book) become effective. The State of Georgia will allow a **6 Month Transition Period, Ending on June 30, 2016.**

Revisions include:

- 1) new names for existing BMPs,
- 2) the addition of new BMPs, as well as
- 3) a new process that will allow someone to add new BMP's to the Green Book found in Appendix A-2



The procedure for joining the Equivalent BMP List is found in Appendix A-2 of the Green Book.

All plans which were completed and sealed prior to July 1st 2016 may utilize the products and practices as specified in the Manual (Fifth and Sixth Editions). These may include previously approved plans with revisions, plans which had not been previously approved but were in the review process, or new plan submittals created prior to July 1st 2016. Any plans received on or after July 1st 2016, are to utilize the new Manual (2016 Edition).



During this 6 month transition period, plans should not be denied based on minor inconsistencies, such as incorrect codes (i.e. Mb instead of Ss or PM instead of Tac or FI-Co). However, the GSWCC recommends the reviewer should note all inconsistencies on the plan review sheet. If the Plan is deficient in other areas, the minor inconsistencies should be included in the reasons for denial.

If you have any questions please contact Ben Ruzowicz or Brady Hart at 706-552-4474.

New Green Book Training

SIGN UP FOR A SEDIMENT BASIN CLASS where we teach practical steps for installation and maintenance of Sediment Basins, and remove the mystery behind dewatering devices and baffles as discussed in the NEW Green Book.

IN THIS ISSUE

[QUESTIONS & ANSWERS](#)

[CONSERVATION CORNER](#)

[ONLINE COURSES](#)

[GUARANTEED TRAINING!](#)

Quick Links

[CHECK EXAM RESULTS](#)

[COURSE SCHEDULE](#)

[NEWSLETTER
ARCHIVES](#)

CLICK HERE TO PURCHASE THE
FIELD MANUAL

Buy Now



NOTE: The 2002 version of the
FIELD MANUAL is the only one.
It is NOT THE GREENBOOK.

FIELD MANUAL
FOR
EROSION
AND
SEDIMENT CONTROL
IN
GEORGIA

VEGETATIVE AND STRUCTURAL
BEST MANAGEMENT PRACTICES (BMP'S)
FOR
LAND-DISTURBING ACTIVITIES



GEORGIA SOIL AND WATER
CONSERVATION COMMISSION

RECERTIFICATION IN-CLASSROOM or ONLINE *"FOR THE OUTDOORSMAN IN ALL OF US!"*

- > Convenient
- > Easy to Use
- > Available 24/7

GEOLOGICONLINE.COM



Click Here for

ONLINE RECERTIFICATION TRAINING!

CLASSROOM COURSE SCHEDULE

SIGN UP FOR A FOR A COURSE

EROSIONTRAININGONLINE.COM



Like us on Facebook

View our profile on **LinkedIn**

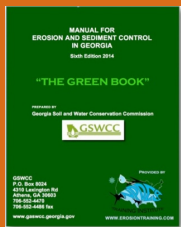


View our videos on 

Buy Now



**ORDER YOUR HARD COPY OF
THE NEW GREENBOOK TODAY!!**



**PLEASE NOTE: THIS IS
NOT THE FIELD MANUAL!**



PROUD TO BE AGC's **STORMWATER TRAINING PROVIDER**

Making common sense, common practice in the construction world is sometimes difficult to say the least. The article below does a great job of spelling out the "common sense" activities that didn't happen at Garden Homes, but things many construction companies are also guilty of not doing. If it wasn't for enforcement of the Clean Water Act, our children would have little hope for clean creeks, rivers and lakes. It's all of our jobs to think of the future implications of our actions today, and keep the dirt out of the creeks.



Sediment is our nations number one problem child when it comes to fouling up our limited water resources. Trout are easily killed by sediment, and striped bass cannot reproduce in many of our lakes because of

sediments suffocating effects their eggs. Let's learn from others mistakes and open our eyes up to the very real pollution impacts our individual sites have collectively!

EPA ENFORCEMENT

Garden Homes violated numerous stormwater requirements at ten of the company's sites by:

- 1) failing to conduct and document weekly inspections;**
- 2) failing to install perimeter silt fencing along the perimeter of their construction sites;**
- 3) failing to maintain a spill kit on-site; and**
- 4) allowing fuel to spill on the ground uphill from an unprotected catch basins.**

The violations at issue in this case were found at multiple construction sites owned and/or operated by Garden Homes through their affiliates.

Repetitive violations continued to persist despite two administrative penalty actions taken by the EPA against affiliates of Garden





Homes.

In addition to the civil penalty, the company agreed to designate an employee as a corporate-wide Stormwater Manager to oversee development of SWPPP, employee training, and conduct routine unannounced compliance inspections. In addition, each construction site will also be required to have a Site Stormwater Manager.

While a few months old , [this stormwater enforcement case](#) by US EPA and Department of Justice (DOJ) is just one of the many cases underscoring the increased focus by EPA on construction site stormwater compliance for both road construction and home/building construction.



WE GUARANTEE OUR TRAINING and DO NOT CHARGE YOU FOR A RETEST IF YOU RETURN!

Read reviews from former students and **"Raving Fans"**

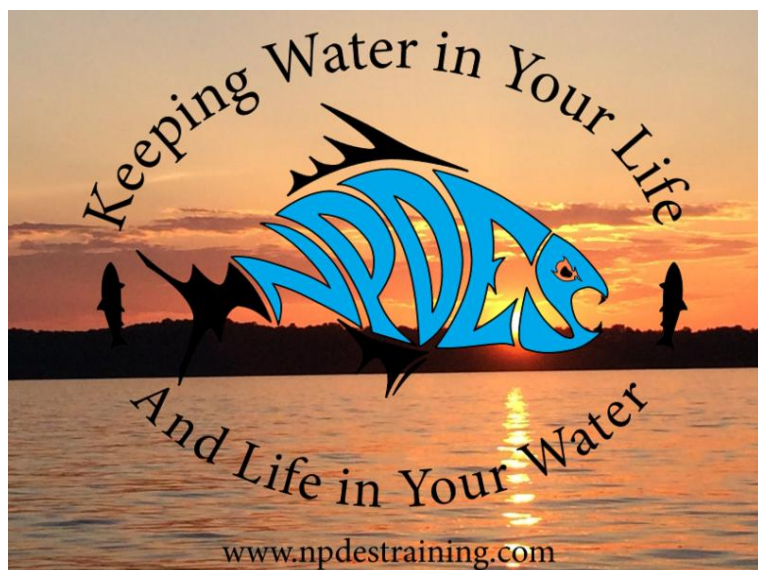
We are here to Help YOU!



We can set you up so you can perform your own inspections and water sampling, or we can do them for you. Contact us anytime at 678-469-5120 or info@npdestraining.com



***HERE's TO TIGHT LINES,
GREAT HUNTS & GOOD TIMES
in Clean Abundant Water!!!***



Please remember our military men and



women serving our country over the holidays.

*Respecting our neighbors downstream is what NPDES is all about and the **BIG REMINDER**. It's OUR CHILDREN that will be living through decisions we've made today. It's important that we sacrifice a little to give our kids an equally great place to live, swim, fish, and hunt tomorrow!*

There is a lot happening today with water regulations that affect a diverse community of public and private entities. If you have areas of interest that you would like included in this newsletter, please contact me at 678-469-5120.



Sincerely,
NPDES TRAINING INSTITUTE

T. Luke Owen, PG
President/Principal Trainer and Consultant
www.npdestraining.com
www.ms4training.com
www.erosiontraining.com
Luke@npdestraining.com