



A COMPARISON..... INDUSTRIAL WASTEWATER TREATMENT SYSTEMS & CONSTRUCTION SITES!

For years, I installed & maintained active & passive water treatment systems for industrial facilities in the Rocky Mountains and western United States. Early in my career I discovered the joy of figuring out how to make dirty water clean again. I learned from some brilliant people (designers and installers) and it gave me a deep understanding of the importance of each facet of the water treatment business in that designers are just as important as the installation and maintenance people of these systems. It also gave me a tremendous amount of respect and appreciation for the role our water treatment professionals play in our America today.

I remember in one of my first installations the importance of a good and consistent maintenance schedule. If that didn't happen, then thousands of dollars could be wasted in emergency travel and cleaning expenses when the systems malfunctioned from being clogged up. I realized early in my career that all the knowledge, experience, brilliance and passion invested into a beautiful wastewater treatment system was not going to be enough to make dirty water clean again **IF** it was not going to be maintained!



Pollution Prevention not Pollution Control
is the **GOAL!**
MAINTENANCE - MAINTENANCE -
MAINTENANCE

Now that stormwater (not industrial process water) is my world, I've found things haven't really changed much in terms of the importance of a properly designed, installed and maintained water treatment system. I've learned that both types of treatment systems, (ie 1) process water for an industrial facility, and 2) stormwater pollution prevention plan (SWPPP) for a construction site; both require a lot of maintenance if they're going to work. The water source, volume and pollutant load is a little different from one to the other, but the reliance on effective maintenance of each is the same! In other words, **PROPER MAINTENANCE** is just as important as the **SWPPP DESIGN**. It not only involves good training, but also personal motivation from the operator (ie superintendent for a NPDES permitted site) to spend the time and money necessary for the system to work properly.

Cleaning out
neglected
water
treatment
systems

regardless of the reason or the source (ie construction or industrial) is incredibly time consuming, expensive and results in damage to our country's quality of life. A lack of maintenance is hazardous to not only the fish and wildlife that must rely on good

water quality to survive, but also the people downstream that value their own personal health and property values. Given our population explosion into watersheds that have never seen development on the scale we're seeing it today; a properly designed, installed and maintained stormwater treatment system is more important than ever before!

T. Luke Owen, PG [MS4CECI](#)

A Grateful American (and brand new Grandpa!)



Clean Water isn't free anymore! The sooner we realize that, the healthier America will be!



GREENBOOK CORNER

The Manual for Erosion and Sediment Control in Georgia

Because of requests from you, our subscribers, we're launching the GREENBOOK CORNER, a discussion of specific BMPs of interest. To start things off, we're going to discuss the most common BMP we hear about, which is the SD4!

(SD4) SEDIMENT TRAPS Georgia's popular (and fairly new) BMP

DO THEY WORK?

Why do we now have SD4s when just a few years ago, they were not identified in the Green Book. The word on the street is organizations that build our infrastructure (ie linear publicly funded projects) were the ones that pushed for SD4s to begin with. In other words, it's more practical for meeting a 67 cubic yard per acre sediment storage requirement, than an SD3 (temporary sediment basin) on linear projects.

Level II Designers love them, because they meet a need for reducing the cost for the sediment storage requirement on any project, not just linear ones.

Level 1A Installers love them, because they're simple, less labor intensive and are easier to maintain. The problem many regulators report is the severe lack of proper installation and maintenance.

As a matter of fact, it's the **Level 1B** certified local regulator (Local Issuing Authority) that more often than not says SD4s are not installed very well, let alone maintained. As a matter of fact, some LIAs highly discourage their use on plan submittals, simply because they are so poorly installed and maintained.

All that said, let's take a look at what the Green Book says.

[SD4 TEMPORARY SEDIMENT TRAP](#)

Temporary Sediment Trap

Sd4



IN THIS ISSUE

[The GREENBOOK Corner](#)

[6th EDITION GREENBOOK](#)

[The NEW GREEN BOOK and
FIELD MANUAL](#)

[MS4 CECI Course Registration](#)

[ONLINE COURSES](#)

[GSPE](#)

Quick Links

[CHECK EXAM RESULTS](#)

MS4CECI COURSES

MS4 Compliance & Code Enforcement Certified Inspector
The "OFFICIAL" MS4CECI Course

[CLICK HERE FOR MS4CECI ONLINE RECERTIFICATION](#)

FIELD STREAM SURVEY

OUTFALL INSPECTIONS

INDUSTRIAL FACILITY INSPECTIONS

CONSTRUCTION SITE INSPECTIONS

[COURSE SCHEDULE](#)

[NEWSLETTER ARCHIVES](#)

[BUY THE NEW 2016 FIELD
MANUAL](#)

[Download a Free Copy.](#)

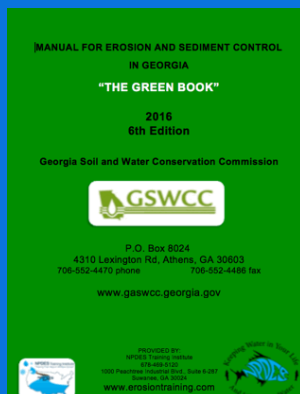


View our videos on 

Buy Now



[A CLICK HERE TO BUY A
2016 GREEN BOOK](#)



OR
DOWNLOAD A
FREE COPY here!

AS OF JULY 1, 2016
ONLY THE 2016
EDITION GREENBOOK
CAN BE USED in
GEORGIA.

This course meets the MS4 NPDES Permit requirement for Training & Green Infrastructure

SEPTEMBER 2018

MARIETTA, GEORGIA - FULL
September 17-18

MS4CCEI (A shortened 1-day stormwater course for Arizona, California, Nevada TriState Seminar only)

September 24th (Renewal) - FULL

September 25th (1 day) - FULL

OCTOBER 2018

ST. JOHN, INDIANA
October 29-30

NOVEMBER 2018

MARIETTA, GEORGIA
November 2nd (Renewal).

DECEMBER 2018

MARIETTA, GEORGIA
December 6-7

FEBRUARY 2019

COLORADO SPRINGS, COLORADO
February 6-7



"THE BEST STORMWATER CLASS I'VE EVER ATTENDED!"

"The Instructor was knowledgeable and experienced with a lot of examples"

"Very practical, I've learned & received more information for my job than any other class I've ever taken, Thank You!"

CALL RITA @

678-469-5120 for help registering!

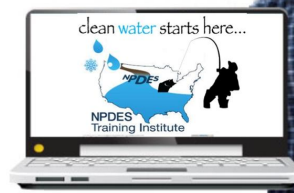
www.MS4stormwatertraining.com

RECERTIFICATION
IN-CLASSROOM or ONLINE
"FOR THE OUTDOORSMAN IN ALL OF US!"

Proud Member of ...
**Greater
Atlanta
Home Builders
Association**

- > Convenient
- > Easy to Use
- > Available 24/7

GEOLOGICONLINE.COM




[Click Here for](#)

ONLINE RECERTIFICATION TRAINING
CLASSROOM COURSE SCHEDULE

REGISTER FOR A COURSE

EROSIONTRAININGONLINE.COM

 Like us on Facebook

View our profile on [LinkedIn](#)



**American Sports
Fishing Association**

*Read About How
ASFA Works To Help
The American
Angler*



ASSOCIATED GENERAL CONTRACTORS



SAVE 10%

**ALL ONLINE &
CLASSROOM
COURSES**

**USE
DISCOUNT COUPON
CODE
"FALL2018"**

The
Weather
Channel



smart
WATERSHEDS
FOR CLEAN RIVERS AND STREAMS



NEED HELP with
SEDIMENT BASINS?
CALL JIM SPOTTS
770-216-9514

southeastenvironmentalconsultants.com

**GETTING IT DONE IN BOTH
THE CLASSROOM & THE FIELD!**

A collage for the Stormwater Training Institute. It includes a photo of workers in safety gear at a construction site, a photo of a classroom with people at tables, and a portrait of a smiling man in a blue polo shirt. Text at the bottom reads 'Stormwater Training Institute', '678-469-5120', and 'www.NPDESTraining.com'. A blue fish logo is also present.

Register for
a Course

Offer Expires 10/15/
18

COMPLIANCE TOOL BOX



Local Government NPDES Enforcement & Plan Review Authority

GREEN BOOK (Manual for E&SC in Georgia - New 2016)

GREEN BOOK Video Presentation

WHO NEEDS TO BE CERTIFIED in GEORGIA - FACT SHEET

March 5, 2012 Memo for Projects Less than 1-Acre

NEW 2014 303d LIST (Georgia) - for use as of July, 2016

EPD GUIDANCE TO SWCC DISTRICTS FOR PLAN REVIEWS

CITY OF ATLANTA - Green Infrastructure Information, forms, etc.

BUILDING & RENOVATING A POND in GEORGIA

TMDL IMPLEMENTATION PLANS

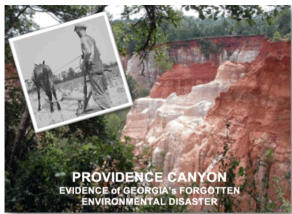
STREAMBANK & SHORELINE RESTORATION in GEORGIA

GESA Exemption #8

BUFFER VARIANCE REQUIREMENTS FOR DAMS

**INVITATION TO JOIN
THE GEORGIA SOCIETY
OF PROFESSIONAL ENGINEERS**

[CLICK HERE](#) to learn more about GSPE.



Betty Jean Jordan, PE
Executive Director
Georgia Society of Professional Engineers

165 Courtland Street, Suite A 235
Atlanta, GA 30303
(404) 840-2542
<https://www.facebook.com/gspeorg/>



**We are proud to have Betty Jean as one of our
Stormwater Trainers!**

**[Click here](#) to register for your Level II Certification or
Recertification Course for designers and reviewers!**

**HERE's TO TIGHT LINES & GOOD TIMES
in Clean Abundant Water!!!**

We must ALWAYS remember that Freedom and Liberty are not free. People have sacrificed their lives and are sacrificing their lives today to give us what we so often take for granted!

Similarly, respecting our neighbors downstream and the critters that are trying to live in our urban watersheds is more important now than ever! Respecting those downstream from our actions is what America is all about, and it's compliance with NPDES Permits that prove our respect.



I thought I understood pure joy when I held a beautiful fish; BUT NOW, holding my new granddaughter, I've truly found my happy place!

"It's OUR CHILDREN & GRAND CHILDREN that will be living through decisions we make today. Proper design, installation and maintenance of your SWPPP has never been more important!"

NPDES TRAINING INSTITUTE
T. Luke Owen, PG
President

www.npdestraining.com
www.ms4training.com
tlowen@npdestraining.com
678-469-5120