



A LOCAL COMPANY FINED MILLIONS for POLLUTING the CHATTAHOOCHEE

Judge reduces fine from **\$332.4 MILLION to \$10 MILLION for Clean Water Act violations** when American Sealcoat Manufacturing, LLC was found guilty of illegally discharging pollutants through a **"significant nexus to a traditional navigable water"** namely, the Chattahoochee River!

WSBTV Craig Lucie - A judge just handed down a \$10 million fine against a local company accused of polluting the Chattahoochee River with toxic chemicals. Channel 2's Craig Lucie interviewed the man who took video of the dump site and sparked our [original investigation from Jodie Fleischer back in February](#).

ENVIRO Alleged Chatthoochee polluter slapped with \$10 million fine

Posted By [Maggie Lee](#) on Wed, Aug 19, 2015 at 12:20 PM



FILE PHOTO COURTESY CHATTAHOOCHEE RIVERKEEPER
The Chattahoochee-bound ooze that cost \$10 million in fines



"Just on this side of Industrial Parkway and less than 100 feet from river is where they were dumping oily material," said Jason Ulseth. Jason is the riverkeeper who took the video which lead a U.S. District Court Judge to levy a \$10 million fine on American Sealcoat Manufacturing.

"It sends a powerful message to the entire industrial community that this type of pollution and these problems are taken very seriously and will not be tolerated," said Ulseth.

[MORE](#)

IN THIS ISSUE

[QUESTIONS & ANSWERS](#)

[HELPFUL LINKS](#)

**Water Quality Violations
VS
Discharge Permit Violations**

[WATER WARS UPDATE](#)

[ONLINE COURSES](#)

[TOOL BOX - NOIs, NOTs & PERMITS](#)

[UPCOMING EVENTS!](#)

Quick Links

[CHECK EXAM RESULTS](#)

[COURSE SCHEDULE](#)

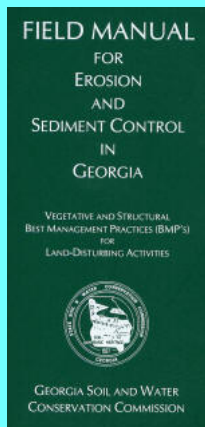
[NEWSLETTER ARCHIVES](#)

CLICK HERE TO PURCHASE
THE FIELD MANUAL

Buy Now



NOTE: The 2002 version of the FIELD MANUAL is the only one. It is NOT THE GREENBOOK.



View our videos on YouTube



How does the project you work on demonstrate an intent to comply with a discharge permit? When someone chooses to disregard their NPDES permit requirements that were developed with the purpose of sediment and chemical pollution out America's streams, rivers, lakes, and coastal areas, they face some serious penalties, like fines up to \$37,500 per violation per day and even criminal jail time! Of course, we've all just read about the \$10 MILLION dollar fine against American Sealcoat Manufacturing, LLC. I "have a sneaking hunch" they could have avoided such a harsh penalty if they didn't choose to blow off their Industrial NPDES General Permit requirements, what do you think? In other words, what may have cost them to set up and monitor their site would not be wasted on paying Clean Water Act permit violations and the costs to clean up their own mess!



Blowing off the rules that protect our legal right to clean water can be significant.

According to Section 301(a) of the Clean Water Act:
"Except as in compliance with this section and sections 302, 306, 307, 318, 402, and 404 of this Act, the discharge of any pollutant by any person shall be unlawful."

Is your site in compliance with the permit when you get hammered with a massive amount of rain water?

Step #1 is figuring out what the words "discharge of any pollutant by any person" means:

DISCHARGE OF ANY POLLUTANT = "any addition of any pollutant to navigable waters from any point source".

[CLICK HERE](#) to keep reading about the world's most successful water law ever implemented!!

REMEMBER, at the end of the day our goal is to preserve our quality of life not just for this generation, but for that of our children and our children's children!



**HEY,
DON'T FORGET!**

CONSERVATION CORNER

At the NPDES Training Institute we believe BALANCE is the key to America's future quality of life. Keeping industry, construction and environmental protection strong in America is vital. Membership in organizations that promote environmentally responsible construction and industrial economic sectors as well as organizations that promote environmental protection are awesome groups to join! *Members from the following organizations attend NPDES Training Institute courses, however the NPDES Training Institute does not claim their endorsement!*

On September 1st (in just a few days), the New **NOTICE OF INTENT (NOI)** for Construction is going to be **REQUIRED** when submitting your ES&PC Plan!



[CLICK HERE for the New NOI](#)

LAKE LANIER POLLUTION from Poultry Plants Continue to Pollute Flat Creek Gainesville Times - June 2015



In 2009, a concerned resident called Chattahoochee Riverkeeper after seeing dead fish floating in Flat Creek. We contacted the state, which found more than 100 dead fish and "gray-colored sludge, floating debris and putrescent foam entering the creek below the outfalls from the (Pilgrim's Pride) facility."

A review of state files then revealed years of polluted stormwater flowing from the Pilgrim's Pride facility, but Georgia's Environmental Protection Division allowed the company to continue to just monitor the problem and not fix it. Multiple complaints were made by CRK to the EPD following the fish kill with no

resolution.

The federal Clean Water Act, passed in 1972, requires that pollution sources such as Gainesville's sewage plant and the chicken plants upgrade their treatment systems to meet specific standards. In many places, significant funds were invested and most waterways are cleaner today.



But, Flat Creek, a 6-mile tributary that flows through Gainesville and is the focus of a new city greenspace program, is still polluted with



high levels of bacteria when it rains. The stream flows through city neighborhoods, near schools and churches before entering Lake Lanier, which provides drinking water for 4 million people and is visited by 7.5 million people annually.

[MORE](#)

ALGAE BLOOMS ARE TAKING OVER SURFACE WATERS!

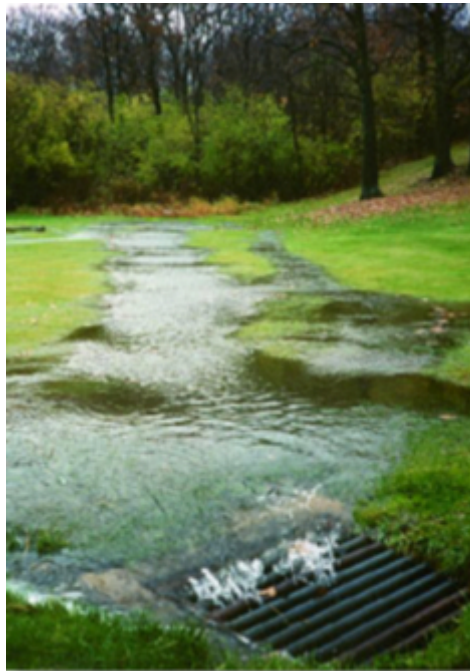
AGRICULTURE VS WATER QUALITY



FISH WITH KIDS!

"We've gotta problem!" Agricultural runoff is killing our lakes and coastal waterways. Agriculture is exempt from NPDES accountability. Good people who farm for large companies are trying to produce food with fertilizers and pesticides that are needed for food production but are horrible for water quality, and hundreds of thousands of people are seeing and feeling the impact! The same drive for efficiency that lowers the cost of eating also damages our soil and water if we let it, and so far we're letting it! Asian countries have been suffering and it's getting even worse for them!

Where you have large concentrations of animal production, you tend to have a buildup of nutrients - phosphorus is the one that accumulates - in soils around concentrated animal-producing regions. Phosphorus is one of the nutrients that plants need to grow, and for most of human history, farmers always needed more of it. Traditionally, farmers got phosphorus from animal manure. So if you grew crops like corn or wheat, it was good to have poultry or hogs nearby. Your grain fed the animals, and their manure fed your crops. Everything worked together.



Then came industrial fertilizer: big phosphorus mines; factories for making the other important nutrient, nitrogen; and railroads or highways to carry that fertilizer to any farmer who needed it.

With the development of the inorganic fertilizer industry, it's possible to grow grain without having animals nearby. So you decouple the animal agriculture from the grain agriculture, and there you have it today.....POOR WATER QUALITY!

In our country when enough people stand up and say enough is enough, something



like the Chesapeake Bay TMDL Implementation Plan gets rolling. Even though the challenge is great, it's better than what China is doing for their horrible algae blooms, which is not much!



Lake Erie Algae

Blooms are coming back with a vengeance this year and red tides moving up the Pacific Coast! Fish and manatees are dieing in record numbers in some areas! Everyone needs to be aware of the work and sacrifice it takes to protect our water. It's worth it in the end, we've already proven that in America!

[MORE](#)

**RECERTIFICATION
IN CLASSROOM or ONLINE
"FOR THE OUTDOORSMAN IN ALL OF US!"**

We are ON TOP of the New Regulations

- > Convenient
- > Easy to Use
- > Available 24/7

GEOLOGICONLINE.COM



Click Here for

[ONLINE RECERTIFICATION TRAINING!](#)

[CLASSROOM COURSE SCHEDULE](#)

[SIGN UP FOR A FOR A COURSE](#)

EROSIONTRAININGONLINE.COM



Like us on Facebook

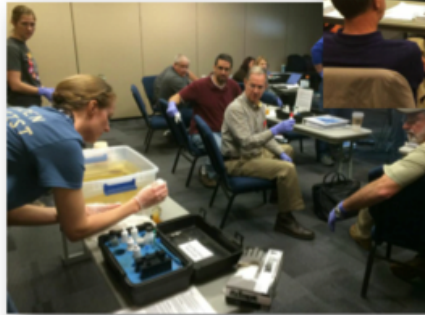
View our profile on **LinkedIn**



PROUD TO BE AGC's STORMWATER TRAINING PROVIDER

[MS4 CECI](#)
**MS4 Compliance & Enforcement
Certified Inspector**





MS4 CECI Training Event

We just finished our August MS4 CECI certification course and it was awesome! Stormwater professionals and government officials in the business for decades say the MS4 CECI course is the most effective stormwater training course they've ever attended.

"Luke has a way of communicating potentially boring & complicated issues in a way that made the class fun and challenging at the same time. Great Course!"

"The instructor didn't just flip through power point slides. I feel like he really cares about the people he's training!"

"The course was challenging and interactive, I enjoyed the water sampling and stream survey excersizes in the field."

"Luke obviously loves what he does. His passion for preserving our country's quality of life is truly inspiring."



Upon successful completion of the course, you will receive a Certificate of Completion and a MS4 CECI photo ID card when you pass the test.

Call us at 678-469-5120 and speak with Rita, or sign up at ms4training.com.





COMPLIANCE TOOL BOX



[GREEN BOOK \(Manual for E&SC in Georgia - New 2014\)](#)

[GREEN BOOK Video Presentation](#)

[GREEN BOOK Update Presentation Free Download](#)

[GREEN BOOK Transition Period Guidance \(NOW CANCELLED\)](#)

[2013 NOI & NOT Forms](#)

[2013 FACT SHEET - NPDES General Permit for Construction \(GA\)](#)

[2013 FACT SHEET ADDENDUM - NPDES General Permit for Construction](#)

[2013 GAR100001 - NPDES GENERAL PERMIT - STAND ALONE](#)

[2013 GAR100002 - NPDES GENERAL PERMIT - INFRASTRUCTURE](#)

[2013 GAR100003 - NPDES GENERAL PERMIT - COMMON DEVELOPMENT](#)

[WHO NEEDS TO BE CERTIFIED in GEORGIA - FACT SHEET](#)

[March 5, 2012 Memo for Projects Less than 1-Acre](#)

[2012 303d LIST - GEORGIA](#)

[2007 EPD GUIDANCE TO SWCC DISTRICTS FOR PLAN REVIEWS](#)

[CITY OF ATLANTA - Forms, Checklists & CAD Sample Plans](#)

[2009 MODEL ORDINANCE \(Read Page 7, paragraph C\)](#)

[BUILDING & RENOVATING A POND in GEORGIA](#)

[CONCRETE WASHOUT PROCEDURES](#)

[STATE WATERS \(CCouch Ltr 2004\)](#)

[LOCAL ISSUING AUTHORITIES - NEW FEB 2012 List](#)

[ALTERNATIVE BMP GUIDANCE DOC](#)

[TMDL IMPLEMENTATION PLANS](#)

[STREAMBANK & SHORELINE RESTORATION in GEORGIA](#)

[GESA Exemption #8](#)

[BUFFER VARIANCE REQUIREMENTS FOR DAMS](#)



MORE STORMWATER CONFERENCES & TRAINING EVENTS

[SOUTHEAST STORMWATER ASSOCIATION \(SESWA\)](#)
(UPCOMING CONFERENCES)

[GEORGIA ASSOCIATION OF WATER PROFESSIONALS](#) (UPCOMING
CONFERENCES)

[GEORGIA RURAL WATER ASSOCIATION \(GRWA\)](#)
(UPCOMING CONFERENCES)

[INTERNATIONAL EROSION CONTROL ASSOCIATION \(IECA\)](#)
SE CHAPTER (UPCOMING CONFERENCES)

[WATER ENVIRONMENT FEDERATION](#) - WATERS WORTH IT!



HERE's TO TIGHT LINES & GOOD TIMES in Clean Abundant Water!!!

Do my actions today support my children (or grandchildren) to grow up in a environmentally and economically healthy America tomorrow?

I think most American's want to be thought of as an American who is PROUD of their decisions that contribute to society in a positive way both now and into the future. Let's be GRATEFUL for the individuals who chose to sacrifice their lives in battle for my country, as well as individual business owners who invest their hard earned profits into protecting our water quality so we can enjoy the liberties that we take advantage of today!

After all, isn't that one of America's pillars and why we are the most generous society on earth?!



A LOT is happening today with water regulations that affect a diverse community of public and private entities. Defining a "Water of the United States" (WOTUS) is getting a lot of attention as it should, so stay



tuned for significant updates to this critical definition.

If you have areas of interest that you would like included in this newsletter, please contact us at 678-469-5120.

Sincerely,
NPDES  **TRAINING INSTITUTE**

T. Luke Owen, PG
President/Principal Trainer and Consultant
www.npdestraining.com
www.ms4training.com
www.erosiontraining.com
Luke@npdestraining.com

