



MAY 2020 NEWSLETTER

Chattahoochee River

"Some reasons why "conservation" in the form of site inspections & maintenance is so important!"



www.npdestraining.com

www.NPDEStraining.com
678-469-5120

NPDES Stormwater Training Institute

Why hold a Pre-construction (Precon) Meeting?
When it comes to preventing sediment from leaving your project, we all need to remember that water quality doesn't recognize COVID-19's "new normal" or whatever that means. Regarding construction related land disturbing activities, America's surface water quality will always depend on effective communication and the pre-construction meeting is how we start the process. The precon meeting is also when the local MS4 inspector has the opportunity to stand up and speak to the project work team and inform them of the adjacent watersheds and the regulatory expectations project owner/operators have regarding compliance with Stormwater Pollution Prevention Plan (SWPPP) design, installation and maintenance of the Best Management Practices (BMPs) involved. Establishing good communication at the beginning of the job is key to effective cooperation throughout



the project schedule between all involved parties, and helps ensure the successful implementation of a project by identifying and preventing potential problems (and NPDES Permit violations) in advance. This article from Contech Engineered Solutions ([CLICK HERE](#)) outlines when and how to conduct an effective pre-construction meeting, who should be involved and what items should be considered.

Sincerely,
T. Luke Owen, PG MS4CECI MS4GIT
President, NPDES Stormwater Training Institute

WE ARE HERE TO TRAIN YOU SAFELY!



**CLICK PICTURE
for 1 Minute Video of Our Training Policy**

**CALL US at 678-469-5120 or
Email Rita@npdestraining.com**

UPCOMING CLASSES

INITIAL CERTIFICATION COURSES



Level 1A Fundamentals Blue Card [Click Here](#)

Level 1B Advanced Fundamentals Red Card [Click Here](#)

Level II Intro to Design Tan / Gray Card [Click Here](#)
for Design Pros (Tan Card) and Plan Reviewers (Gray Card)

RECERTIFICATION COURSES - CLASSROOM

Classroom

Level 1A - Level 1B or Level II [Click Here](#)

Online

Understanding GEOS, the NPDES General Permit & State Waters [Click Here](#)

Trees and Their Design in Construction [Click Here](#)

**Call us at 678-469-5120 or
Email Rita@npdestraining.com**

MS4CECI

MS4 Compliance & Enforcement Certified Inspector

Classroom



MS4CECI 2-Day Classroom/Field Course [Click Here](#)

MS4CECI - **Classroom** RECERTIFICATION [Click Here](#)

We're Excited to Announce the LAUNCH of our NEW ONLINE MS4CECI Recertification and other courses!

**Feel free to call and speak with a person that will help you!
Call 678-469-5120 or
email Rita@npdestraining.com. We're always here to serve you!**

MS4GIT **MS4 Green Infrastructure Technician** [Click Here](#)

The MS4GIT Course is a 1-day training experience focusing on Green Infrastructure BMPs and their installation & maintenance. Attendees will learn how to identify and solve issues surrounding poor maintenance, as well as avoid GI failures entirely. This course was designed especially for stormwater managers, stormwater engineers and consultants, MS4 Inspectors and maintenance crews.



Upon completion, trainees will have learned to:

- Implement correct construction sequencing protocol for BMPs
- Understand how to read a BMP landscape plan
- Identify soil mixtures and calculate soil / material volumes
- Identify and select appropriate plants for BMPs
- Understand maintenance requirements of BMPs
- Identify common problems and solutions for BMPs
- Understand how to implement a landscape maintenance plan
- Evaluate plant performance and how to replace failing plants



WHAT IS A BIOSWALE?
CLICK PHOTO
FOR BRIEF VIDEO

WE GUARANTEE OUR TRAINING

The NPDES Stormwater Training Institute promises to deliver more!
Our reputation is built on providing YOU the best stormwater education, taught
by **EXPERIENCED INSTRUCTORS**, that you'll find anywhere!

**PLUS, you NEVER pay twice for the same course you take from us
if you don't pass the test!**

IN THIS ISSUE

[UPCOMING CLASSES](#)

[The NEW GREEN BOOK and FIELD MANUAL](#)

[AMERICA's WATERSHEDS](#)

Quick Links

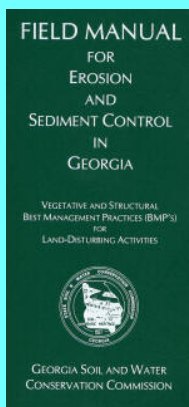
[CHECK EXAM RESULTS](#)

[COURSE SCHEDULE](#)

[NEWSLETTER ARCHIVES](#)

[BUY THE NEW 2016 FIELD MANUAL](#)

The NEW 2016 version of the FIELD MANUAL. It is NOT THE GREENBOOK.



View our videos on 

Buy Now



TECH TALK

Tech Talk is a forum for resolving erosion and sediment control and/or construction related problems from a technical perspective. Technical questions are submitted by the reader; suggestions may be from Southeast Environmental Consultants, LLC (SEC) or other sources. In this instance, T. Luke Owen has written the article. The reader is solely responsible for the results, if suggestions are implemented.

The Surface Water Skimmer (Sk)

Is it fair to expect an Sk to effectively dewater a construction site? For some time now, federal and state environmental protection agencies have been requiring construction sites to consider the placement of an Sk to dewater temporary sediment basins and permanent detention ponds while land disturbing activities are taking place.

Known as a passive dewatering device for construction sites, a surface water skimmer best management practice (BMP) withdraws water from the surface of a temporary sediment basin or retrofitted detention pond. The intention of a

highest quality water from the basin through the outfall pipe, reducing outfall flow velocities and allowing the sediment to further settle in the basin instead of the stream, river or lake off site. What many stormwater

Floating Surface Skimmer

Sk



DEFINITION

A floating surface skimmer is a buoyant device that releases/drains water from the surface of sediment ponds, traps or basins at a controlled rate of flow. It "skims", or dewater, from the water surface where sediment concentrations are at a minimum in the water column instead of draining from the bottom where sediment concentrations are their highest, and drains to a riser or the backside of a dam.

Floating surface skimmers release a low rate of flow, draining the basin slowly at a nearly constant rate. The inlet of the skimmer device is sized according to the basin volume and designed to drain the basin in a fixed amount of time. Traditional sediment basin outlet designs use a perforated riser for dewatering, which allows water to leave the basin from all depths.



professionals outside of Georgia don't understand is that our state has strict discharge limits established in our NPDES General Permit. Therefore, the pressure that designers and installers place on these passive dewatering devices to discharge almost-clear water is difficult to attain and what may

consider to be unrealistic, especially when fine sediment is not properly treated prior to draining through the skimmer.

All things considered, are local permitting authorities (enforcement inspectors) expecting these devices to work, or do they give the contractors a pass, since "it's hard and unfair?" Unless a permittee and the regulatory inspector are aware of how stormwater treatment systems for construction sites should operate and are then motivated to put forth the effort to properly design, install, inspect and maintain them, not only will the Sk and retrofit (Rt) fail, but so will any structural control device, every time. It's essential that BMPs are properly designed, installed and maintained.

MANUAL FOR EROSION AND SEDIMENT CONTROL
IN GEORGIA
"THE GREEN BOOK"
2016
6th Edition

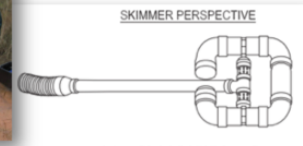
Georgia Soil and Water Conservation Commission



P.O. Box 8024
4310 Lexington Rd, Athens, GA 30603
706-552-4470 phone 706-552-4486 fax
www.gswcc.georgia.gov

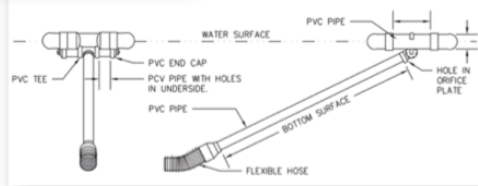


PROVIDED BY:
WATER WATCH PRO
478-488-0100
1000 Piedmont Avenue, Suite 600
www.erosiontraining.com



SKIMMER FRONTAL SECTION VIEW

SKIMMER SIDE SECTION VIEW



OR
DOWNLOAD A
FREE COPY of the
Green Book here!

AS OF JULY 1, 2016 ONLY THE
2016 EDITION GREENBOOK
CAN BE USED IN GEORGIA.

10% DISCOUNT

**Contact Rita at 678-469-5120 for
your 10% Discount
on any course!**

USE CODE
CleanWater!





[POND GUIDE for LAND OWNERS](#)



**NEED HELP with Site
Inspections or erosion
control problems!
CALL JIM SPOTTS**

770-216-9514
southeastenvironment
alconsultants.com



**HERE'S TO TIGHT LINES & GOOD TIMES
in AMERICA's Threatened
Clean & Abundant Water!**



America's past water pollution and the modern day pollution found in countries like China, are just another reminder of how important it is that we comply with the Clean Water Act's water quality rules and regulations! Every time you go fishing, or jump in the lake to take a swim, be grateful for our NPDES permitting program that makes it all possible. Respecting our neighbors downstream is what America is all about and it's the NPDES permit that helps us do that!

Permit compliance is an investment in our nation's future generations, so our children will also have an equally great place live, swim, fish, boat and hunt tomorrow!

Sincerely,
NPDES  **TRAINING INSTITUTE**

T. Luke Owen, PG MS4CECI
Owner/Operator

www.npdestraining.com
www.ms4training.com
www.erosiontraining.com
tlowen@npdestraining.com