



[Visit our website](#)

[View All Courses](#)



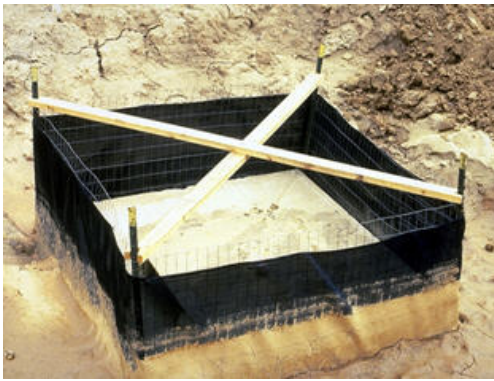
Greetings!

When it comes to delivering a product, what's more important: the cart or the horse that delivers it? If you think about it, it's impossible to deliver the product without both the cart and the horse. Following that line of thinking, when it comes to America's fishable and swimmable rivers (the product), what's

more important; compliance with federal and state clean water permits and local ordinances OR the job-producing construction and industrial economic sectors that pay for it all? I think we can all agree that it's both.

That said, the operator of the cart and the horse (you and I) are the ones that must stand in the gap to help people understand the "common sense" behind complying with the regulations that protect our fishable and swimmable water resources. As the third most populated country in the world, properly designing, installing and maintaining best management practices (BMPs) are more critical today than ever! So why do so many land developers blow off the rules intended to protect our water? I think it's a combination of factors, but one thing is for sure; human nature has proven over and over again that, unfortunately, it often takes enforcement (or the fear of it) for a company's management to require their superintendents to properly design, install and maintain their BMPs. Let's all step up and take the pollutants carried by stormwater runoff more seriously. Our kids and the watersheds we want them to enjoy, deserve it!

T. Luke Owen, PG MS4CECI MS4GIT
President, NPDES Stormwater Training Institute



Good ol' SILT FENCE

Silt fence is the most commonly used (and often misused) sediment control device found on construction projects today. It must be correctly installed and routinely maintained to function properly. Placing silt fence perpendicular to the direction of sheet flow and anchoring the fabric in a 6-inch trench is critical for it to perform as designed.

When it comes to sediment barriers, silt fences can be problematic with heavy rain events. They can fail

to adequately drain water when fine silt and clay are in high concentrations can fill the pore spaces, which prevents water flow.

If removed or punctured to allow the water to drain (see photo), silt and sediment will be allowed to flow at higher volumes and velocities, rendering the silt fence useless to begin with and putting the job site out of compliance. Silt fences are not always a "BEST" management practice when they're not placed on the design correctly, or used to funnel sediment laden stormwater to our creeks, rivers and lakes. A properly designed, installed and maintained silt fence barrier will be compliant and cost efficient, as it protects downstream receptors of stormwater runoff.



Call us at 678-469-5120 or shoot us an email at helpdesk@npdestraining.com to set up a customized training for your company or group.

Quick Links

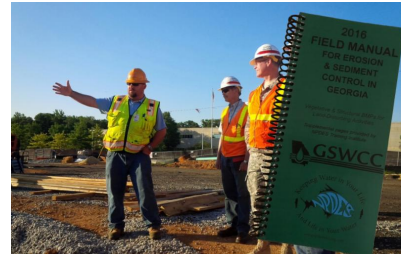


[CHECK EXAM RESULTS](#)

[COURSE SCHEDULE](#)

[NEWSLETTER ARCHIVES](#)

TECH TALK



Tech Talk is a forum for resolving erosion and sediment control and/or construction related problems from a technical perspective. Questions are submitted by the reader; suggestions may be from the NPDES Training Institute, [Southeast Environmental Consultants, LLC](#) ([SEC](#)), or other sources. The reader is solely responsible for the results, if suggestions are implemented.



USES



**CLICK TO START
A FREE TRIAL**



Time of Report	Precipitation	Last 5 min	1 Hour
2020-07-10 10:00	0.00in	0.00in	0.00in
2020-07-10 11:00	0.00in	0.00in	0.00in
2020-07-10 12:00	0.00in	0.00in	0.00in
2020-07-10 13:00	0.00in	0.00in	0.00in
2020-07-10 14:00	0.00in	0.00in	0.00in
2020-07-10 15:00	0.00in	0.00in	0.00in
2020-07-10 16:00	0.00in	0.00in	0.00in
2020-07-10 17:00	0.00in	0.00in	0.00in
2020-07-10 18:00	0.00in	0.00in	0.00in
2020-07-10 19:00	0.00in	0.00in	0.00in
2020-07-10 20:00	0.00in	0.00in	0.00in
2020-07-10 21:00	0.00in	0.00in	0.00in
2020-07-10 22:00	0.00in	0.00in	0.00in
2020-07-10 23:00	0.00in	0.00in	0.00in
2020-07-11 00:00	0.00in	0.00in	0.00in
2020-07-11 01:00	0.00in	0.00in	0.00in
2020-07-11 02:00	0.00in	0.00in	0.00in
2020-07-11 03:00	0.00in	0.00in	0.00in
2020-07-11 04:00	0.00in	0.00in	0.00in
2020-07-11 05:00	0.00in	0.00in	0.00in
2020-07-11 06:00	0.00in	0.00in	0.00in
2020-07-11 07:00	0.00in	0.00in	0.00in
2020-07-11 08:00	0.00in	0.00in	0.00in
2020-07-11 09:00	0.00in	0.00in	0.00in



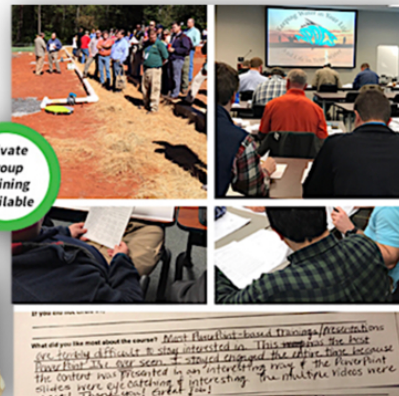
Categories of COMMON VIOLATIONS...

- 1 - Failure to apply for NPDES coverage
- 2 - Failure to prepare a SWPPP
- 3 - Inadequate BMPs on the SWPPP
- 4 - Failure to implement BMPs
- 5 - Failure to maintain BMPs
- 6 - Failure to conduct or document Inspections

**YES
We Can
Travel To
You!**



Private
group
training
available



For More Information or to Schedule a Class:

678-469-5120

or

Rita@npdestraining.com



ONLINE

**MS4 Stormwater
Inspector**

Meets EPA's MS4 Permit Requirement
for Qualified Personnel Training

678-469-5120
www.NPDEstraining.com



The **MS4
Stormwater
Inspector 4-Hour
Online Course**
[CLICK HERE
for a Brief Video &
Course Description](#)

Call Rita at 678-

469-5120

or if you prefer you can email

Rita@npdestraining.com

[CLICK HERE TO REGISTER](#)

We're Here to Serve You!

GSWCC

GEORGIA EROSION & SEDIMENT CONTROL

INITIAL CERTIFICATION COURSES



Level 1A - Blue Card

Level 1B - Red Card

Level II- Tan/Grey
Card

RE-CERTIFICATION COURSES



SEDIMENT BASINS

4 PDHs

Whether it's Filter Rings, Baffles, Flocculants or a Surface Skimmer, Dr. Jim Spotts and I provide training on how to integrate Best Management Practices

Filter Ring

Fr



DEFINITION

A temporary stone barrier constructed at storm drain inlets and pond outlets.

PURPOSE

This structure reduces flow velocities, preventing the failure of other sediment control devices. It also helps prevent sediment from leaving the site or entering drainage systems, prior to permanent stabilization of the disturbed area.

(BMPs) into the site plan so your sediment basin can actually do its job and prevent sediment from entering our watersheds.

We hope to see you at our next class!

[Sediment Basins - REGISTER HERE](#)

Online Courses -

GEOS, Site Inspections & State Waters

Trees & Construction, Site Inspections & State Waters

Classroom Courses -

Level 1A - Level 1B or Level II

STORMWATER COURSES



WE GUARANTEE OUR TRAINING!

Our reputation is built on providing YOU the best stormwater education, taught by **EXPERIENCED INSTRUCTORS** that know how to effectively teach!

You NEVER pay twice for the same course you take from us, EVEN if you don't pass the test!

MS4CECI

Initial 2-Day Classroom/Field Course

CLASSROOM - [Click Here](#)

Recertification 4-Hour Course

ONLINE - [Click Here](#)



MS4GIT

MS4 Green Infrastructure Technician

The MS4GIT Course is a 1-day training experience focusing on Green Infrastructure BMPs and their installation & maintenance. Attendees will learn how to identify and solve issues surrounding poor maintenance, as well as avoid GI failures entirely. This course was designed especially for stormwater managers, stormwater engineers and consultants, MS4 Inspectors and maintenance crews.



Upon completion, trainees will have learned to:

- Implement correct construction sequencing protocol for BMPs
- Understand how to read a BMP landscape plan
- Identify soil mixtures and calculate soil / material volumes
- Identify and select appropriate plants for BMPs
- Understand maintenance requirements of BMPs
- Identify common problems and solutions for BMPs
- Understand how to implement a landscape maintenance plan
- Evaluate plant performance and how to replace failing plants



[CLICK HERE TO REGISTER](#)

**10% OFF any
course!**

[Claim Now](#)

[Shop Our Merchandise](#)



We Can't Give Up on Demanding NPDES Permit Compliance from Polluters! Even When They're American Cities!

America's past water pollution and the severe modern day pollution found in some American cities, as well as countries like China and India, send a resounding message of the importance of NPDES permit compliance.

What cities like [Los Angeles \(see right\)](#), Seattle, Washington, Portland, Oregon, etc. are doing is inexcusable in America. They are willingly

violating their NPDES MS4 Permit by pressure washing human excrement and other pollutants directly down their storm drains. These violators are just another reminder of how important it is that we Americans demand compliance with Clean Water Act NPDES rules & regulations! Every time you go fishing or jump in the lake to take a swim, be grateful for our NPDES permitting program that makes it all possible. Respecting our neighbors downstream is what America is all about and it's compliance with NPDES Permits that helps us do that!



"We all need to view NPDES Permit compliance as an investment in our nation's future quality of life, so our children will also have an equally great place to live, swim, fish, boat and hunt tomorrow! " T. Luke Owen

Sincerely,

T. Luke Owen, PG MS4CECI MS4GIT

Owner/Operator - Principal Trainer

www.npdestraining.com

tlowen@npdestraining.com

