



JUNE 2020 NEWSLETTER

Clear Water in a Sediment Basin following a 2" rain event is possible!

"The proper use of anionic polyacrylamide works!"



www.npdestraining.com

www.NPDEStraining.com
678-469-5120

NPDES Stormwater Training Institute

Operating and maintaining a stormwater treatment system on a construction site is not for the faint of heart. One reason is the fact that the construction site (area of land disturbed) **is** the stormwater treatment system!

When the superintendent and/or compliance inspector views the project as a treatment system of practices (i.e. vegetative and structural) that are there to keep the pollutants (mostly sediment) out of a downstream river or lake, then and only then does erosion and sediment control make sense. Sediment is one of the most damaging watershed pollutants in the country.

The General Contractor (owner and/or operator) must have a stormwater treatment mindset in order ensure that the site plan and the vegetative and structural best management practices (BMPs) are ready for the next rain event.



A BMP that is not often used, but can keep the dirt on site, is anionic polyacrylamide (PAM). Applied as a tackier (Tac) or a flocculant (FI-Co), PAM can be a real game changer and can help the contractor keep the sediment in his stormwater discharges to a minimum.

We offer a quarterly [Sediment Basins and Surface Skimmers 4-hour course](#) in which Dr. Jim Spotts provides training on how to properly apply PAM to keep your turbidity discharges to a minimum. It's worth 4 PDHs. We hope to see you at our next class!

Sincerely,
T. Luke Owen, PG MS4CECI MS4GIT
President, NPDES Stormwater Training Institute

WE ARE HERE TO TRAIN YOU SAFELY

(in the Classroom or Online)



CALL US at 678-469-5120 or
Email Rita@npdestraining.com

UPCOMING CLASSES

INITIAL CERTIFICATION COURSES



Level 1A Fundamentals **Blue Card**

[Click Here](#)

Level 1B Advanced Fundamentals **Red Card**

[Click Here](#)

Level II Intro to Design **Tan / Gray Card**

for Design Pros (Tan Card) and Plan Reviewers (Gray Card)

[Click Here](#)

RECERTIFICATION COURSES - CLASSROOM

Classroom

Level 1A - Level 1B or **Level II** [Click Here](#)

Online

- GEOS, Site Inspections & State Waters [Click Here](#)

- Trees & Construction, Site Inspections & State Waters [Click Here](#)

Call us at 678-469-5120 or
Email Rita@npdestraining.com

MS4CECI



First 2-Day Course is Classroom & Field

MS4CECI 2-Day Classroom/Field Course [Click Here](#)

RECERTIFICATION - 4 Hours

ONLINE MS4CECI [Click Here](#)

CLASSROOM MS4CECI [Click Here](#)

We're Excited to Announce the LAUNCH of our NEW ONLINE MS4CECI Recertification and other courses!

**To answer any questions you might have, feel free to call and
speak with a real person at 678-469-5120
or if you prefer you can
email Rita@npdestraining.com!**

We're always here to serve you!

MS4GIT

MS4 Green Infrastructure Technician

[Click Here](#)

The MS4GIT Course is a 1-day training experience focusing on Green Infrastructure BMPs and their installation & maintenance. Attendees will learn how to identify and solve issues surrounding poor maintenance, as well as avoid GI failures entirely. This course was designed especially for stormwater managers, stormwater engineers and consultants, MS4 Inspectors and maintenance crews.



Upon completion, trainees will have learned to:

- Implement correct construction sequencing protocol for BMPs
- Understand how to read a BMP landscape plan
- Identify soil mixtures and calculate soil / material volumes
- Identify and select appropriate plants for BMPs
- Understand maintenance requirements of BMPs
- Identify common problems and solutions for BMPs
- Understand how to implement a landscape maintenance plan
- Evaluate plant performance and how to replace failing plants



WHAT IS A BIOSWALE?

[CLICK PHOTO
FOR BRIEF VIDEO](#)

WE GUARANTEE OUR TRAINING

The NPDES Stormwater Training Institute promises to deliver more! Our reputation is built on providing YOU the best stormwater education, taught by **EXPERIENCED INSTRUCTORS**, that you'll find anywhere!

PLUS, you NEVER pay twice for the same course you take from us if you don't pass the test!

IN THIS ISSUE

UPCOMING CLASSES

The NEW GREEN BOOK and FIELD MANUAL

AMERICA'S WATERSHEDS

Quick Links

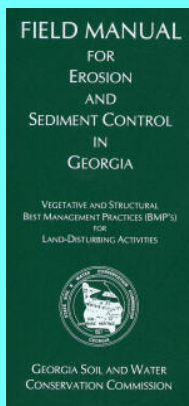
[CHECK EXAM RESULTS](#)

[COURSE SCHEDULE](#)

[NEWSLETTER ARCHIVES](#)

BUY THE NEW 2016 FIELD MANUAL

The NEW 2016 version of the FIELD MANUAL. It is NOT THE GREENBOOK.



View our videos on YouTube

Buy Now



TECH TALK



Tech Talk is a forum for resolving erosion and sediment control and/or construction related problems from a technical perspective. Technical questions are submitted by the reader; suggestions may be from NPDES Training Institute, Southeast Environmental Consultants, LLC (SEC) or other sources. In this instance, Luke Owen has written the article. The reader is solely responsible for the results, if suggestions are implemented.

The Filter Ring (Fr)

Properly installed and well maintained Filter Rings (Fr) are necessary to prevent a sediment basin's outlet from getting overwhelmed with the load of sediment that can accumulate in it, sometimes even within a single rain event! According to the Green Book, Filter Rings **shall** be used in conjunction with other sediment control measures, except where other practices defined in this Manual are not appropriate (such as inlets to concrete flumes). They can be installed at or around devices such as inlet sediment traps, temporary down drain inlets and detention pond retrofits to provide additional sediment filtering capacity.

Filter Ring

Fr

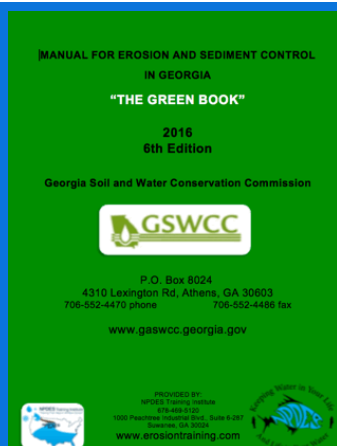


DEFINITION

A temporary stone barrier constructed at storm drain inlets and pond outlets.

PURPOSE

This structure reduces flow velocities, preventing the failure of other sediment control devices. It also helps prevent sediment from leaving the site or entering drainage systems, prior to permanent stabilization of the disturbed area.



OR
 DOWNLOAD A
FREE COPY of the
 Green Book here!

**AS OF JULY 1, 2016 ONLY THE
 2016 EDITION GREENBOOK
 CAN BE USED IN GEORGIA.**



[CLICK HERE to LEARN MORE](#)



As in the photo above, the filter ring may also be placed below storm drains that discharge into detention ponds, creating a centralized area, or "forebay", for sediment accumulation. This provides for easier, more localized clean-out of the pond.

A formal design is not required, but the standards addressed in the Green Book must be used. The filter ring shall surround all sides of the structure receiving runoff from disturbed areas. It should be placed a minimum of four feet and in some cases should be placed 8 - 10 feet from the structure. The ring is not intended to substantially impound water, which would cause flooding or damage to adjacent areas. [Check out the Green Book to learn more!](#)

Coronavirus Brings Surge Of Sewer Clogs To Wastewater Operations

by Peter Chawaga, Water Online



The majority of Philadelphia's 19 sewer and stormwater pumping stations have experienced clogs from face masks, gloves and wipes, sanitary sewer overflows spiked by 33 percent from February to March in Houston due to clogs, and airfield maintenance workers at Beale Air Force Base in Northern California have shifted their responsibilities to focus on clearing out the base's plumbing.



[POND GUIDE for LAND OWNERS](#)

The spread of the virus has changed our daily lives and introduced challenges throughout our public systems. Drinking water and wastewater operations across the country have been no exception.

[Read More](#)

10% DISCOUNT

**Contact Rita at 678-469-5120 for
your 10% Discount
on any course!**

USE CODE

CleanWater!

**HERE'S TO TIGHT LINES & GOOD TIMES
in AMERICA's
Clean & Abundant Water!**



**NEED HELP with Site
Inspections or erosion
control problems!**

CALL JIM SPOTTS

770-216-9514

southeastenvironment
alconsultants.com



America's past water pollution and the modern day pollution found in countries like China are just another reminder of how important it is that we comply with America's Clean Water Act NPDES rules and regulations! Every time you go fishing or jump in the lake to take a swim, be grateful for our NPDES permitting program that makes it all possible. Respecting our neighbors downstream is what America is all about and it's the NPDES permit that helps us do that!

We all need to view NPDES Permit compliance as an investment in our nation's future, so our children will also have an equally great place to live, swim, fish, boat and hunt tomorrow!

Sincerely,



