



www.npdestraining.com

www.NPDEStraining.com
678-469-5120

NPDES Stormwater Training Institute

Why are underground stormwater detention systems used so often now?

In many locations, detention ponds are built above ground. However, in most places where land is scarce, detention systems are placed underground to save room for development above. The initial expense for these underground systems is higher due to excavation costs, but the payoff comes in the form of land made available for parking garages, athletic fields, roads, homes and office buildings. Modern-day systems now have the strength and flexibility to work on all kinds of sites.



Given that 85% of Americans live in urbanized watersheds in America today, stormwater has to go somewhere and often the best place is not the stormwater catch basin. During high flow rain events, storm sewers can be overwhelmed and consequently, flooding occurs. Detention systems serve to prevent that flooding. The below article examines a variety of ways that stormwater experts have managed onsite runoff via underground detention systems. It provides an overview of several of these projects, discusses the factors to consider when choosing your system, and highlights the positive results that come from implementing the right one.

[CLICK HERE](#) to read more about various types of underground detention systems

Written by Robert Baxter

STORMWATER, November 2019

UPCOMING CLASSES INITIAL CERTIFICATION COURSES



Level 1A Fundamentals **Blue Card** [Click Here](#)

Level 1B Advanced Fundamentals **Red Card** [Click Here](#)

RECERTIFICATION COURSES - CLASSROOM

Classroom

- **Level 1A** - **Level 1B** or **Level II** [Click Here](#)
- **SPECIAL** SEDIMENT BASIN COURSE in AUGUSTA (Evans), GA [Click Here](#)

Online

- Understanding GEOS, the NPDES General Permit & State Waters [Click Here](#)
- Trees and Their Design in Construction [Click Here](#)



MS4CECI

MS4 Compliance & Enforcement Certified Inspector Classroom

MS4CECI 2-Day Classroom/Field Course [Click Here](#)

MS4CECI - **Classroom** Recertification [Click Here](#)

Online

- MS4CECI - **Online** Recertification [Click Here](#)



MS4GIT

MS4 Green Infrastructure Technician [Click Here](#)

IN THIS ISSUE

[UPCOMING CLASSES](#)

[The NEW GREEN BOOK and FIELD MANUAL](#)

[AMERICA's WATERSHEDS](#)

[WHY IS CERTIFICATION IMPORTANT?](#)

[LOCAL ENFORCEMENT](#)

[STORMWATER CONFERENCES](#)

AMERICA'S WATERSHEDS

Can You Find the Chattahoochee-Flint-Apalachicola
Watershed? (hint: it's green)

*"Water always goes where it wants to go, and nothing in
the end can stand against it."*

Margaret Atwood

Quick Links

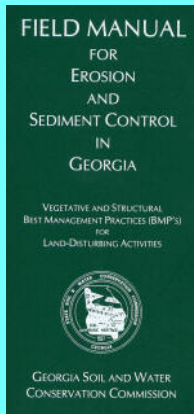
[CHECK EXAM RESULTS](#)

[COURSE SCHEDULE](#)

[NEWSLETTER ARCHIVES](#)

BUY THE NEW 2016 FIELD MANUAL

The NEW 2016 version of the FIELD MANUAL. It is NOT THE GREENBOOK.



View our videos on 

Buy Now



MANUAL FOR EROSION AND SEDIMENT CONTROL
IN GEORGIA

"THE GREEN BOOK"

2016
6th Edition

Georgia Soil and Water Conservation Commission



P.O. Box 8024
4310 Lexington Rd, Athens, GA 30603
706-552-4470 phone 706-552-4486 fax

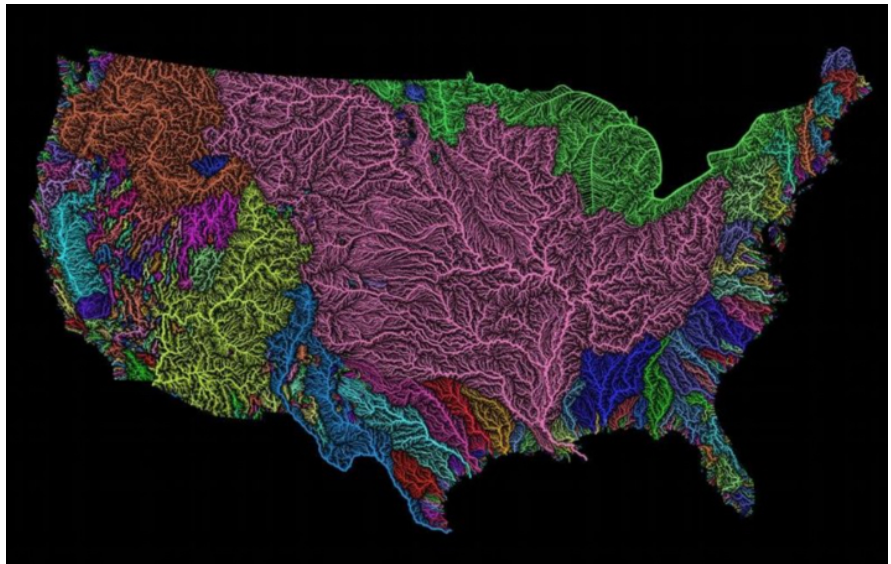
www.gswcc.georgia.gov



PRODUCED BY
NPDES Training Manual
1000 Peachtree Industrial Blvd., Suite 400
Buckhead, GA 30329
www.erosiontraining.com



**OR
DOWNLOAD A**



The US has more that 25,000 rivers that travel a total of 3.5 million miles. Each color above represents a river's drainage basin and shows the many rivers that connect to the same main river, which then drains into the ocean. The giant basin in the middle of the country is the Mississippi River basin. The Chattahoochee River is more like a creek compared to other major rivers such as the Ohio and the Missouri that drain into the massive Mississippi River.

[MORE](#)

WHY IS CERTIFICATION SO IMPORTANT?



Certification courses, when **taught by an experienced trainer and good communicator**, are one of the most effective ways of demonstrating your knowledge and proficiency regarding stormwater treatment system design, compliance and enforcement. Operating best management practices (BMPs) is challenging to say the least, and impossible to do if the person responsible is not properly educated and trained in the art of permit compliance and BMP implementation!

Being certified is like being licensed to operate a vehicle. Your card demonstrates your willingness and ability to perform your duties in a highly professional manner, ensuring that your actions do not damage the financial health of your employer, the physical health of the people downstream and/or the aquatic habitat of the adjacent waterway. Certification shows others that you are knowledgeable, competent and that you understand the legal and technical implications behind the NPDES permitting program and its mission of holding responsible

FREE COPY of the
Green Book here!

**AS OF JULY 1, 2016 ONLY
THE 2016 EDITION
GREENBOOK CAN BE
USED IN GEORGIA.**



**The
Weather
Channel**



individuals accountable for
damage caused to others
downstream!



WE GUARANTEE OUR TRAINING

We promise to deliver more! Our reputation is built on providing trainers that know their stuff and care about their students. **PLUS, you will NEVER pay twice for the same course if you don't pass the test!**

[CLICK HERE](#) to register for an erosion and sediment control course, MS4 Compliance and Enforcement Certified Inspector course or a MS4 Green Infrastructure Technician Course.

LOCAL ISSUING AUTHORITY ENFORCEMENT is critical to America's Quality of Life

Our population is tremendously r eliant on **state enforcement** and even more on **local enforcement efforts** that ensure our streams, rivers, lakes and coasts are protected.



**NEED HELP with
Site Inspections,
Dust Control or
Sediment Basins?
CALL JIM SPOTTS
770-216-9514**

southeastenvironment
alconsultants.com



Research shows:

5% will violate water quality laws no matter what,

20% will comply with water quality laws no matter what, and

75% will comply only with effective local enforcement!

"Improving the Efficiency and Effectiveness of Compliance Monitoring and Enforcement of Environmental Policies"

Cheryl Wasserman



**MORE STORMWATER CONFERENCES &
TRAINING EVENTS**



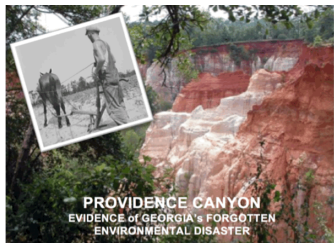
SOUTHEAST STORMWATER ASSOCIATION (SESWA)
(UPCOMING CONFERENCES)



**GEORGIA ASSOCIATION OF WATER
PROFESSIONALS** (UPCOMING CONFERENCES)



GEORGIA RURAL WATER ASSOCIATION (GRWA)



(UPCOMING CONFERENCES)



INTERNATIONAL EROSION CONTROL ASSOCIATION
SE CHAPTER (UPCOMING CONFERENCES)



WATER ENVIRONMENT FEDERATION -
WATER'S WORTH IT! (UPCOMING CONFERENCES)

HERE'S TO TIGHT LINES & GOOD TIMES
in Clean, Abundant Water!



Respecting our neighbors downstream is what America is all about and it's the NPDES permit that helps us do that! It's OUR CHILDREN that will be living through decisions we make today.

NPDES is an investment into our nation's future generations, so they also can have an equally great place in which to live, swim, fish, boat and hunt tomorrow!

"Conservation means development as much as it does protection. I recognize the right and duty of this generation to develop and use the natural resources of our land but I do not recognize the right to waste them, or to rob, by wasteful use, the generations that come after us."

Theodore Roosevelt
Osawatomie, Kansas
August 31, 1910

Sincerely,
NPDES TRAINING INSTITUTE

T. Luke Owen, PG
President

www.npdestraining.com
www.ms4training.com
www.erosiontraining.com
tlowen@npdestraining.com