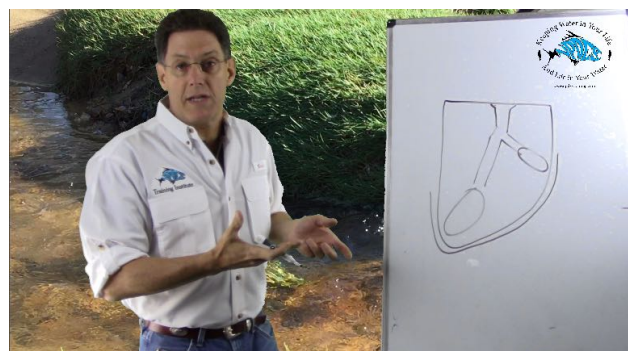




Erosion Sedimentation and Pollution Control (ES&PC) Plans and their respective checklist [Click on this link](#) to download the **NEW 2019 ES&PC Plan checklist excel file**. In it, you will find checklists for stand alone, infrastructure and common development plan submittals.

Regarding Tertiary Permittees, the common development plan review checklist has a statement at the very bottom that says.....



The ES&PC Plan Checklist for Common Development says.....

"* This requirement of the Common Development permit is not applicable to Tertiary Permittees with a Plan(s) for a typical individual lot(s), if the total land disturbance within the construction site is less than five (5) acres and the total land disturbance within each individual lot is less than one (1) acre. If applicable, the * checklist item would be N/A."

Note, the first line item of the checklist DOES NOT have an "*" which means it is a requirement that Tertiary permittees (per the statement above) submit the plan review checklist with the plan. Line 1 of the checklist goes on to say "**(The completed Checklist must be submitted with the ES&PC Plan or the Plan will not be reviewed)** Permit IV.D.1 pg 29"

Over the years I've found that LIAs with clear plan submittal requirements, do not have the trouble with plan reviews that LIAs without clear submittal requirements have. **The more consistent LIAs are with their plan submittal requirements and inspections, the less confused and more efficient Design Professionals & Permittees are when trying to comply with the rules.**

Hope that helps clear some of the confusion!

TO LEARN MORE ABOUT GEOS and CHANGES TO THE NEW NPDES GENERAL PERMITS

For those of you who were recertified last year and would like **1 PDH** for your professional license, [click on this link](#) and you will be directed to the narrated course module we developed that explains new Georgia EPD Online System for NPDES reporting, as well as the changes that were included in last years NPDES General Permits for Construction.

WE always welcome your feedback! Please let us know your thoughts and we'll do our best to answer your questions and provide you with relevant information.



Sincerely,
Luke

T. Luke Owen, PG MS4CECI
tlowen@npdestraining.com

"We are here for you! Our courses are provided to you in such a way as to help you EFFECTIVELY perform your erosion prevention and sediment control responsibilities!"

SAVE 10%



For ALL ONLINE & CLASSROOM
COURSES

USE DISCOUNT COUPON CODE
"SPRING2019 "

*Register for
a Course*

Offer Expires February 28, 2019

IN THIS ISSUE

[The NEW GREEN BOOK and
FIELD MANUAL](#)

[ONLINE COURSES](#)

[MS4 CECI Course Registration](#)

Quick Links

[CHECK EXAM RESULTS](#)

[COURSE SCHEDULE](#)

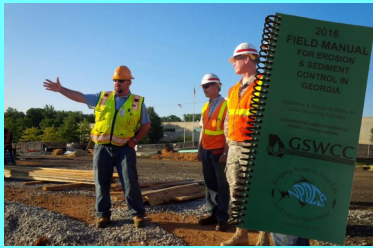
RECERTIFICATION

IN-CLASSROOM or ONLINE

"FOR THE OUTDOORSMAN IN ALL OF US!"

[NEWSLETTER ARCHIVES](#)

BUY THE NEW 2016 FIELD MANUAL



View our videos on **YouTube**

Buy Now



**CLICK HERE TO ORDER
YOUR 2016 GREEN BOOK**

MANUAL FOR EROSION AND SEDIMENT CONTROL
IN GEORGIA

"THE GREEN BOOK"

2016
6th Edition

Georgia Soil and Water Conservation Commission



P.O. Box 8024
4310 Lexington Rd, Athens, GA 30603
706-552-4470 phone 706-552-4486 fax

www.gswcc.georgia.gov



PRODUCED BY:
NPDES Training Institute
1000 Peachtree Industrial Blvd., Suite 600
Buckhead, GA 30329
www.erosiontraining.com



**OR
DOWNLOAD A
FREE COPY here!**

**AS OF JULY 1, 2016
ONLY THE 2016
EDITION GREENBOOK**

- > Convenient
- > Easy to Use
- > Available 24/7

GEOLOGICONLINE.COM



Click Here for


ONLINE RECERTIFICATION TRAINING



CLASSROOM COURSE SCHEDULE

REGISTER FOR A COURSE

EROSIONTRAININGONLINE.COM

 Like us on Facebook

View our profile on **LinkedIn**

CAN BE USED in
GEORGIA.



WATERWATCHPRO
SPECIAL YEAR-END OFFER FOR
NPDES TRAINING INSTITUTE SUBSCRIBERS!

1. GET THE WATERWATCH PRO APP

2. ENTER COUPON CODE 'NPDES'

3. PAY NO MONTHLY MAINTENANCE FEE FOR THE FIRST 6 MONTHS WHEN YOU UPGRADE FROM FREE TRIAL TO PAID ACCOUNT - A \$69 SAVINGS!

HURRY - LIMITED TIME OFFER ENDS 12/31/2018!



ASSOCIATED GENERAL CONTRACTORS

PROPOSED WATERS OF THE US RULE

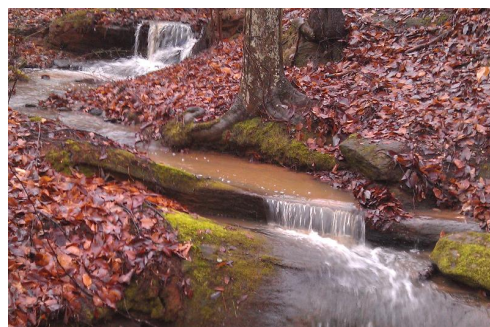


Last month on December 14, 2018, the U.S. Environmental Protection Agency (EPA) and U.S. Army Corps of Engineers proposed a new clean water rule to replace the controversial 2015 Waters of the United States (WOTUS) rule. The 2015 WOTUS rule is undergoing legal challenges and is on hold in 28

states, creating a patchwork of regulations. The new proposal is intended to correct what many considered regulatory overreach of the old rule while continuing to protect federal waters.

One of the Presidents initial executive actions on taking office was to direct the agencies to review and revise the 2015 WOTUS rule for (1) regulatory uncertainty, (2) "due regard" to state roles, and (3) in consideration of the plurality opinion in a related 2006 Supreme Court decision.

Stay tuned for more information about the very controversial issue of how to feasibly grow economically without trashing our surface waters. [Click on this link](#) to learn more about the proposed rule.



MS4CECI

MS4 Compliance & Enforcement Certified Inspector
The "OFFICIAL" MS4CECI Course

State Specific MS4 Training

[CLICK HERE FOR MS4CECI RECERTIFICATION](#)

This Course Meets the MS4 Permit & Green Infrastructure Requirements for training



**NEED HELP with
SEDIMENT BASINS?
CALL JIM SPOTTS
770-216-9514**

southeastenvironment alconsultants.com



www.MS4training.com



"Luke taught the MS4 course information in an efficient yet thorough manner, I learned more about stormwater than I've ever learned"

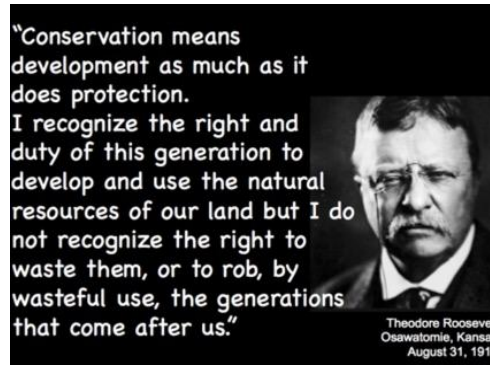
"THE BEST STORMWATER CLASS I'VE EVER ATTENDED!"

CALL RITA @

678-469-5120 for help registering!

www.MS4training.com

***HERE's TO TIGHT LINES & GOOD TIMES
in Clean Abundant Water!!!***



Freedom and Liberty are not free. People have sacrificed their lives and are sacrificing their lives that give us what we so often take for granted today. Similarly, respecting our neighbors downstream and the critters that are trying to live in our urban watersheds is more important now than ever! Respecting those downstream from your construction and industrial operations is what America is all about.

It's compliance with NPDES Permits that prove our respect!

Sincerely,
NPDES  **TRAINING INSTITUTE**



T. Luke Owen, R PG MS4CECI
President

www.npdestraining.com

www.ms4training.com

www.erosiontraining.com

tlowen@npdestraining.com