



December 2019 Newsletter



POKE & PROD YOUR WAY TO A GREAT STORMWATER INSPECTION

The big three of stormwater permits - municipal, construction and industrial - all have a core component in the form of inspections. While the physical locations may vary in terms of how they function, i.e. a scrap metal recycler operates in a different way than an earthworks contractor grading a residential subdivision does, the permits all share an underlying goal: that of keeping pollutants out of stormwater. In addition, the requirements for these inspections can be distilled down to two main objectives: identifying potential pollutant sources and reporting on the status of current best management practices (BMPs) or stormwater control measures (SCMs).



The BEST STORMWATER INSPECTIONS involve a knowledgeable inspector who pokes and prods a site's activities and stormwater BMPs to determine deficiencies and necessary corrective actions that ultimately make up what I call "active stormwater compliance."

[MORE](#)

by Ryan Janoch

All I would add to Ryan's great article is that the Site Inspector must know the NPDES Permit and documentation requirements. Poking & prodding must include a critical review of the SWPPP, inspection documentation, proof of BMP repairs and reporting requirements maintained by the permittee as written into the NPDES Permit.

T Luke Owen, PG MS4CECI

DOWNLOAD your [GUIDANCE for NPDES Permit Compliance](#) for GEORGIA Construction Sites

MS4 Green Infrastructure Technician (MS4GIT) Coming in February 2020

WAITING LIST

Limited Class Sizes

Call Rita at 678-469-5120 to get on the waiting list!

MS4 GREEN INFRASTRUCTURE TECHNICIAN MS4GIT™

Presented by



Provided by



NPDES Training & Education
for Persons Involved with Stormwater Compliance & Enforcement Activities

678-469-5120
HelpDesk@NPDESTraining.com
MS4TRAINING.COM

The first course will be in February, and is designed to be one of the most practical and helpful courses for installing and maintaining Green Infrastructure! Together with Southface Institute, the NPDES Stormwater Training Institute designed it to be the most effective course for your time and money that you'll find anywhere!

When the MS4 permit requirements changed to include installation and maintenance of Green Infrastructure for MS4s throughout Georgia and other states, we began receiving a number of phone calls asking us for a Green Infrastructure course. We quickly saw the need for training that would be practical, yet cost effective, so we approached numerous green infrastructure experts in the industry and ultimately chose a top tier expert Southface Institute, to collaborate with on the development of a Green Infrastructure installation and maintenance course, to be provided by the NPDES Stormwater Training Institute.

Our reputation is built on providing the highest quality and most cost effective training to our students. All of **our courses are packed full of information** presented in multiple training platforms to help you know how to perform your job duties, inspections and maintain your BMPs to the best of your ability!

Call now to reserve your spot in February! Class size is limited due to the training required to achieve a more personal approach to education. We will make a special announcement in the beginning of January and we will put the MS4GIT

training schedule on our website at that time.

WHAT DO YOU GET OUT OF IT?

On top of compliance with your NPDES MS4 Permit requirements, all attendees will receive a Certificate of Completion, Certification Card with photo and number and digital copy of training materials. All former MS4CECI graduates will have the opportunity to take the training at a significant discount, so don't waste any time signing up!

HOW TO REGISTER?

Call: 678-469-5120

Email: MS4GIT@NPDESTraining.com

We hope to see you soon.
T. Luke Owen, PG MS4CECI

NEW ONLINE COURSES NOW! NEW ONLINE RECERTIFICATION COURSES FOR ALL LEVELS OF CERTIFICATION!



TREES in DESIGN & CONSTRUCTION SITES

Level 1A Fundamentals



Level 1B Advanced Fundamentals

Level II Introduction to Design

For ES&PC Plan Designers (Tan Card) & Reviewers (Gray Card)

GEOS **GA EPD ONLINE SYSTEM**

Level 1A Fundamentals

Level 1B Advanced Fundamentals

Level II Introduction to Design

For ES&PC Plan Designers (Tan Card) & Reviewers (Gray Card)



GASWCC online Level 1A, 1B and Level II Re-Certification course with the 4th module about GEOS

We are ON TOP of the New Regulations

INITIAL CERTIFICATION (CLASSROOM ONLY)

(click one of the courses below):



[**Level 1A Fundamentals \(Blue Card\)**](#)
[**Click Here**](#)

[**Level 1B Advanced Fundamentals \(Red Card\) - Click Here**](#)

[**Level II Introduction to Design \(Tan/Gray Card\) - Click Here**](#)
for Design Pros (Tan Card) and Plan Reviewers (Gray Card)

or your money back!

WE ARE HERE FOR YOU!

Please don't hesitate to call us with any questions or training needs you have!

Rita@NPDESTraining.com or

IN THIS ISSUE

[UPCOMING CLASSES](#)

[FREE DOWNLOADABLE 2016 FIELD MANUAL](#)

[6th EDITION GREENBOOK](#)

[The NEW GREEN BOOK and FIELD MANUAL](#)

[WATER WATCH PRO](#)

[NPDES COMPLIANCE ADVICE](#)

[MS4CECI Course Registration](#)

[MS4s MATTER@](#)

[AMERICA NEEDS LOCAL ENFORCEMENT](#)

[COMPLIANCE TOOL BOX](#)

[LIKE US ON FB & LINKED IN](#)

[STORMWATER CONFERENCES](#)

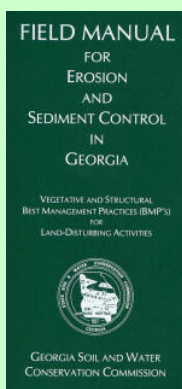
Quick Links

[CHECK EXAM RESULTS](#)

[COURSE SCHEDULE](#)

[BUY THE NEW FIELD MANUAL](#)

The Most Recent
FIELD MANUAL



View our videos on 

**When That Ugly Rain Storm Dumps on Your Project,
How Can You Demonstrate Your
"Intent To Comply"?**



When your construction company or industrial facility spends thousands of dollars trying to do the right thing by keeping dirt and other pollutants out of the creek, you definitely want to be able to PROVE that you made every attempt to comply with the rules and regulations that for decades have protected America's watersheds.

[MORE](#)

MS4CECI



**Next Class in
Marietta, Georgia**

**MARCH 3rd & 4th
2020
[Click Here](#)**

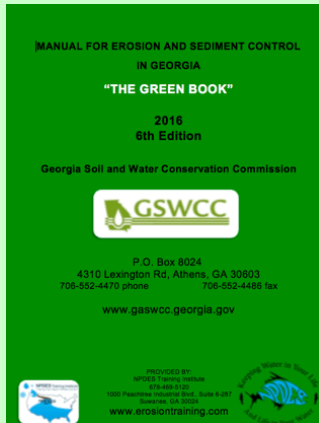
**Hands On
Field IDDE & Outfall Investigations,
Construction or Industrial Site Inspections**

*This course meets and exceeds the NPDES Permit requirements for
stormwater training.*

Buy Now



CLICK HERE
for Your Green Book



OR
DOWNLOAD A
FREE COPY OF THE
GREENBOOK HERE!

AS OF JULY 1, 2016 ONLY
THE 2016 EDITION
GREENBOOK CAN BE USED in
GEORGIA.



[Click Here for MS4CECI Course Dates](#)

RECERTIFICATION COURSES

CLASSROOM Recertification MS4CECI

[CLICK HERE](#)

ONLINE Recertification MS4CECI

[CLICK HERE](#)

COURSE EVALUATIONS:

These are just a few!

"Of all the stormwater classes I've had to take, this one was by far the most stimulating and educational yet! Thank you; your passion for America and our quality of life shines through your training!"

"The presentation was well organized, with multiple usages of media & dry erase board illustrations. The Impaired Stream field visit was the icing on the cake."

"Luke is an excellent instructor, his knowledge and experience was communicated clearly and on point with interesting facts and examples."

"The instructor was incredibly knowledgeable and shared his experience, which really helped drive home the point. Different media in the training (video, whiteboard and slides with few words and big pictures) made a potentially boring class fun. The NPDES Training Institute rocks!"

"The trainer was knowledgeable regarding the material; his anecdotes and teaching method of involving others was great."

"Excellent facility, field exercise, excellent media presentation, great lunch."

"The instructor had a great training style, I liked how he mixed it up."

www.waterwatchpro.com

TRACK RAIN ON YOUR PHONE!



Uses NOAA data
Daily report
Forecasts & more!

 **Download App**

 **Set Location**

 **Get Notified**

Available on the App Store **FREE Trial Download** Use Coupon Code: **NPDES** GET IT ON Google play
Get \$10 off when you upgrade

Use Coupon Code **NPDES**
[Click Here for a Short Video](#)



Building a Strong America
One Brick and
Creek at a Time

"These guys know their stuff!"

**"THE BEST STORMWATER CLASS
I'VE EVER ATTENDED!"**

CALL RITA

678-469-5120 for help registering!

www.ms4training.com

#MS4sMatter

Research shows:

5% will violate water quality laws no matter what,
20% will comply with water quality law s no matter what , and

75% will comply only with effective Local Enforcement!

"Improving the Efficiency and Effectiveness of Compliance Monitoring and Enforcement of Environmental Policies"

Cheryl Wasserman, USEPA

COMPLIANCE TOOL BOX



NPDES Permit Construction Compliance Guidance

Construction Inspection Forms for NPDES Permit Compliance

GREEN BOOK (Manual for E&SC in Georgia - New 2016)

FIELD MANUAL for E&SC in Georgia - New 2016

WHO NEEDS TO BE CERTIFIED in GEORGIA - FACT SHEET

Enforcement Requirements for Local Issuing Authorities

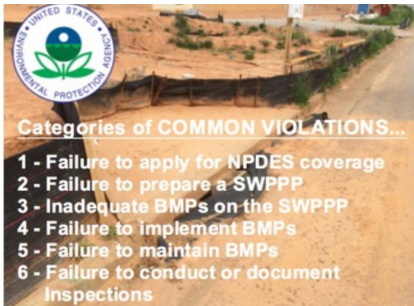
EPD GUIDANCE TO SWCC DISTRICTS FOR PLAN REVIEWS

PONDS - BUILDING or RENOVATING

STREAMBANK and SHORELINE Stabilization Restoration

PERMITTEE SCENARIOS FOR COMPLIANCE

[FIND IMPAIRED WATERS WHERE YOU LIVE](#)




**List of Common
Violations to Avoid**



**Southeast
Stormwater Association**



 Like us on Facebook

View our profile on 



ASSOCIATED GENERAL CONTRACTORS

Save 10%

USE COUPON CODE
"WINTER2019"

Contact Rita at
678-469-5120
for **YOUR DISCOUNT**



**NEED HELP with your
Erosion Issue?**

CALL JIM SPOTTS

770-216-9514

www.southeastenvironmentalconsultants.com



SEMPER PARATI AMERICA!



Expires on January 15, 2019



**MORE STORMWATER CONFERENCES &
TRAINING EVENTS**



[SOUTHEAST STORMWATER ASSOCIATION \(SESWA\)](#)



[INDIANA MS4 PARTNERSHIP](#)



[GEORGIA RURAL WATER ASSOCIATION](#)



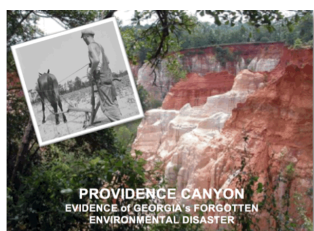
[GEORGIA ASSOCIATION OF WATER PROFESSIONALS](#)



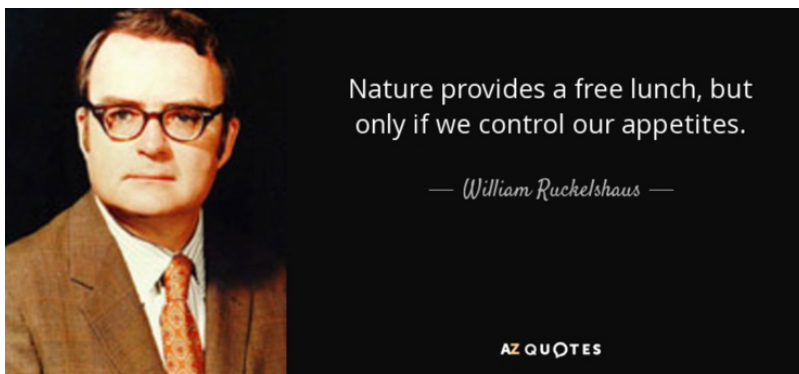
[INTERNATIONAL EROSION CONTROL ASSOCIATION](#)



[WATER ENVIRONMENT FEDERATION](#)



Never Forget Our
Environmental History ,
It's Our Greatest Teacher!



Respecting our neighbors downstream is what America is all about, and it's the compliance with and enforcement of the NPDES permit program that makes our nation the envy of the world!

OUR CHILDREN will be living tomorrow with the decisions we make today with regard to our water . Let's be considerate and respectful of their quality of life when we're gone.

NPDES permit compliance is an investment in our nation's future generations so they too can have an equally great place in which to live, swim, fish, boat and hunt tomorrow!

Sincerely,
NPDES TRAINING INSTITUTE

T. Luke Owen, PG MS4CECI
President

www.npdestraining.com
www.ms4training.com
www.erosiontraining.com
tlowen@npdestraining.com