



MARCH 2020 NEWSLETTER



NPDES Permits
Protecting America from Polluters



COVID-19 - Poverty & Wuhan, China
Communist China water pollution
with no end in sight

Regarding the **COVID-19** outbreak, Americans have to ask "what truly makes America the greatest country on earth?" In my world of stormwater management, there is no greater time to appreciate my country than now. To remind me of that, all I have to do is visit one of Americas beautiful rivers, lakes and coastal bays! How is it that a river flowing through a densely populated city like Atlanta, be clean enough to catch trout and striped bass, while big cities in China and many other countries have no way of making the same claim?

Is our quality of life tied strictly to a healthy strong economy like that of China, or does it go beyond that of having a roof over our head and food in our belly? I think it does, and so did the writers of the United States Constitution. The Constitution and the liberties we share because of it, drive American innovation that

subsequently creates a strong economy. But not only that, it drives the creation of programs found in the Clean Water Act that protect us from polluters and the water born diseases that are so prevalent in other countries. Dense urban living and bad water quality from untreated sewage and industrial wastes are exactly what contributes to the spawning of disease and sicknesses like COVID-19 virus.

So how does Green Infrastructure (GI) have anything to do with being a patriot in America? In my view, if you're involved in stormwater management in the proper design, installation or maintenance of Best Management Practices (BMPs) like GI in America, then you are preserving and protecting the greatest country in the world. GI and many other BMPs are effective long term solutions to maintaining our waterways in the middle of a rapidly growing population where approximately 85% of Americans live in dense urban settings.



Make no mistake,
Stormwater Management
Programs (SWMPs),
Stormwater Pollution Prevention Plans (SWPPPs) and the BMPs within
them, like GI, are responsible for ensuring things like COVID-19 will
never be spawned from America's shores. GI and the enforcement of
NPDES permits assures Americans that our watersheds will always be

**Green Infrastructure - a key to
America's quality of life!**

Virus Pushes China's Poor Rat Farmers to Brink of Despair

Bloomberg News
March 14, 2020, 5:00 PM EDT

- ▶ Authorities encouraged breeding of the animals to ease poverty
- ▶ One rat produces up to 2 kilograms of meat, stewed or in soup



Bamboo rat. Photographer: Jerry Redfern/LightRocket via Getty Images

Infectious disease expert, Zhong Nanshan said in January that bamboo rats could be the source of the new COVID-19 virus.

full of edible fish, swimmable lakes and sailable coasts even as they are increasingly surrounded by thousands of people.

In my opinion, by pursuing compliance with NPDES and Green Infrastructure water quality programs, we are fulfilling our patriotic duty of preserving and maintaining the water quality that makes "America the Beautiful" so unique in all the world! The evidence is all around us, I hope you look for it and appreciate it too!

SEMPER FI

T. Luke Owen, PG MS4CECI MS4GIT

President, NPDES Stormwater Training Institute

COVID-19 ANNOUNCEMENT

The current situation requiring "social distancing" has us temporarily stifled, but like before, WE WILL BE BACK with the best classroom training services ever!

IF YOUR ORGANIZATION NEEDS CERTIFICATION CALL US at 678-469-5120 or send an email to Rita@npdestraining.com

**WE CAN PRACTICE SOCIAL DISTANCING
WHILE SIMULTANEOUSLY TRAINING YOU!**

UPCOMING CLASSES

INITIAL CERTIFICATION COURSES



Level 1A Fundamentals **Blue Card** [Click Here](#)

Level 1B Advanced Fundamentals **Red Card** [Click Here](#)

Level II Introduction to Design **Tan / Gray Card** [Click Here](#)
for Design Pros (Tan Card) and Plan Reviewers (Gray Card)



RECERTIFICATION COURSES - CLASSROOM

Classroom

- **Level 1A - Level 1B or Level II** [Click Here](#)

Online

- Understanding GEOS, the NPDES General Permit & State Waters [Click Here](#)
- Trees and Their Design in Construction [Click Here](#)



MS4CECI

[MS4 Compliance & Enforcement Certified Inspector](#)

Classroom

MS4CECI 2-Day Classroom/Field Course [Click Here](#)

MS4CECI - **Classroom** RECERTIFICATION [Click Here](#)

MS4GIT

MS4 Green Infrastructure Technician

[Click Here](#)



MS4GIT Course is a 1-day training experience focusing on green infrastructure BMPs and their installation & maintenance. Attendees will learn how to identify and solve issues surrounding poor maintenance, as well as avoid GI failures entirely. This course was prepared for stormwater managers, stormwater engineers and consultants, MS4 Inspectors and maintenance crews.

Upon completion, trainees will have learned to:

- Implement correct construction sequencing protocol for BMPs
- Understand how to read a BMP landscape plan
- Identify soil mixtures and calculate soil / material volumes
- Identify and select appropriate plants for BMPs
- Understand maintenance requirements of BMPs
- Identify common problems and solutions for BMPs
- Understand how to implement a landscape maintenance plan
- Evaluate plant performance and how to replace failing plants

IN THIS ISSUE

[UPCOMING CLASSES](#)

[The NEW GREEN BOOK and FIELD MANUAL](#)

[AMERICA's WATERSHEDS](#)

[WHY IS CERTIFICATION IMPORTANT?](#)

[LOCAL ENFORCEMENT](#)

[STORMWATER CONFERENCES](#)

ES&PC PLAN REVIEW CHANGES ARE IN THE WIND!

[HB 422](#) - By Rep. Tim Barr (R-Lawrenceville). Amended version **would allow non-Local Issuing Authorities (LIA) two new options** for soil and erosion plan review.

Currently, a non-LIA government must use GSWCC and/or SWCD for soil and erosion plan review. This bill would allow a non-LIA government to contract with an LIA government within their water district for plan review or allow a non-LIA to employ or

Quick Links

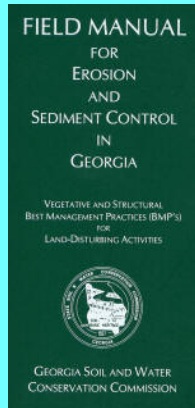
[CHECK EXAM RESULTS](#)

[COURSE SCHEDULE](#)

[NEWSLETTER ARCHIVES](#)

BUY THE NEW 2016 FIELD MANUAL

The NEW 2016 version of the FIELD MANUAL. It is NOT THE GREENBOOK.



View our videos on 

Buy Now



MANUAL FOR EROSION AND SEDIMENT CONTROL
IN GEORGIA
"THE GREEN BOOK"
2016
6th Edition

Georgia Soil and Water Conservation Commission



P.O. Box 8024
4310 Lexington Rd, Athens, GA 30603
706-552-4470 phone 706-552-4486 fax

www.gswcc.georgia.gov



PRODUCED BY
NPDES Training Institute
1000 Peachtree Industrial Blvd., Suite 4-207
Buckeye, GA 30606
www.erosiontraining.com



**OR
DOWNLOAD A**

contract with an individual with Level 2 Design status for in-house plan review.

CULVERTs vs BRIDGES

HOW TO CHOOSE THE RIGHT ONE



www.thebalancesmb.com

Culverts can play a vital role when it comes to erosion and sediment control on construction sites. Properly installed, they serve to minimize erosion, reduce the build-up of standing water and provide an exit for run-off water. This article examines the types of culverts available to stormwater managers and provides tips on selecting and installing the appropriate type for your project.

WHY IS CERTIFICATION SO IMPORTANT?

Certification courses, when taught by experienced trainers AND excellent communicators, are one of the most effective ways of learning and subsequently demonstrating your knowledge and proficiency for stormwater treatment system design, compliance and enforcement.

Being certified is like being licensed to operate a vehicle. Your card demonstrates your education level and perceived ability to perform your duties in a highly professional manner, ensuring that your actions do not damage the financial health of your employer, the physical health of the people downstream and/or the aquatic habitat of the watershed.



WE GUARANTEE OUR TRAINING

The NPDES Stormwater Training Institute promises to deliver more! Our reputation is built on providing trainers that know their stuff and care about their students. **PLUS, you will NEVER pay twice for the same course if you don't pass the test!**

[CLICK HERE](#) to register for an erosion and sediment control course, MS4 Compliance and Enforcement Certified Inspector course or an MS4 Green Infrastructure Technician Course.

EFFECTIVE MS4 & LIA ENFORCEMENT is critical to America's Quality of Life

Our population is tremendously r eliant on **state enforcement** and moreso on **local enforcement efforts** that ensure our streams, rivers, lakes and coasts are

protected.

Research shows:

**FREE COPY of the
Green Book here!**

**AS OF JULY 1, 2016 ONLY
THE 2016 EDITION
GREENBOOK CAN BE USED
IN GEORGIA.**

TRACK RAIN ON YOUR PHONE!

Uses NOAA data.
Daily report
Forecasts & more!

Download App

Set Location

Get Notified

Available on the App Store | **FREE Trial Download** | Use Coupon Code: NPDES | Get it on Google play | Get \$10 off when you upgrade

**START A FREE TRIAL
NOW CAPABLE OF
DOWNLOADING PAST
RAIN EVENT DATA!**



5% will violate water quality laws no matter what,

20% will comply with water quality laws no matter what, and

75% will comply only with effective local enforcement!

"Improving the Efficiency and Effectiveness of Compliance Monitoring and Enforcement of Environmental Policies"

Cheryl Wasserman

USEPA



MORE STORMWATER CONFERENCES & TRAINING EVENTS



SOUTHEAST STORMWATER ASSOCIATION (SESWA)
(UPCOMING CONFERENCES)



GEORGIA ASSOCIATION OF WATER PROFESSIONALS (UPCOMING CONFERENCES)



GEORGIA RURAL WATER ASSOCIATION (GRWA)
(UPCOMING CONFERENCES)



INTERNATIONAL EROSION CONTROL ASSOCIATION
SE CHAPTER (UPCOMING CONFERENCES)



WATER ENVIRONMENT FEDERATION -
WATER'S WORTH IT! (UPCOMING CONFERENCES)

10% DISCOUNT



Contact Rita at 678-469-5120 for your 10% Discount on any course!

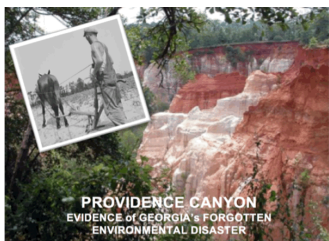
USE CODE
CleanWater!

**HERE'S TO TIGHT LINES & GOOD TIMES
in Clean, Abundant Water!**



**NEED HELP with Site
Inspections or erosion
control problems!
CALL JIM SPOTTS
770-216-9514**

southeastenvironmentalconsultants.com



COVID-19, originating in China, is just another reminder of how important it is that America complies with our water quality rules and regulations! Every time you go fishing, or jump in the lake to take a swim, be grateful for our NPDES permitting program which makes it all possible. Respecting our neighbors downstream is what America is all about and it's the NPDES permit that helps us do that!

Permit compliance is an investment in our nation's future generations, so our children will also have an equally great place live, swim, fish, boat and hunt tomorrow!

Sincerely,
NPDES TRAINING INSTITUTE

T. Luke Owen, PG
President

www.npdestraining.com
www.ms4training.com



www.erosiontraining.com
tlowen@npdestraining.com