



April 2019 Newsletter



Click the Photo

If a Small 2-acre Un-permitted Construction Site Caused This,
What Kind of Damage Would A Large Site Cause?

is this happening in a state that requires certified personnel as permittees, enforcers and plan designers?" The answer is usually found in the arena of poor local enforcement. Without enforcement, water quality inevitably declines.

Everyone in Metro Atlanta should know that our city is built on bedrock with little available groundwater and a lake (Lake Lanier) located at the top of our tiny watershed that provides water for nearly 2.5 million people, a lake that is filling up with sediment at an estimated rate of 125 acre-feet/year. Lake Allatoona on the northwest side of Atlanta provides water for ~1 million people and is roughly 75% full of sediment today. To say Atlantans should be concerned when they see sediment draining off a construction site into the storm drain, creek, river or lake is an understatement.

In the February Newsletter we showed a picture. Now we have the video. The sediment spreading into Lake Lanier in this photo was discharged from a 2-acre site, not a 100-acre site. Not only that, the LIA didn't make sure the site was properly permitted and/or performing site inspections.

Last year, Georgia tied its record rainfall from 1948 with roughly 70-inches of stormwater in a single year. Let that sink in for a minute while you think about open construction sites that release tons and tons of sediment into our limited water resources as heavily permitted Point Sources that are suppose to design, install and maintain ground cover and runoff control devices. You might ask, "Why

In a nutshell, everyone in Metro Atlanta should understand that our future economic prosperity (i.e., quality of life) is closely tied to our lakes being full of water, not sediment. I can't possibly predict the weather, but I do know one thing, we will go through another drought. When it happens, how long will it take before we run out of water because our rivers and lakes are full of dirt and not water? Allowing construction sites to go un-permitted with poorly designed, installed and/or maintained BMPs is just not cool!



Short 2.5 Minute Video Sheet Erosion, a creeks #1 enemy

According to "[Erosion and Sediment Modeling of the Lake Sidney Lanier Watershed](#)", a 2008 University of Georgia graduate study, "Lake Lanier has had a steady input of sediment at the rate of 250,000 tons/year. If we assume it to be 300,000 tons/year in order to account for stream bank (shoreline) erosion, and realize that 1 acre-foot volume of sediment weighs about 2,430 tons, the total volume of sediment input into the lake is ~125 acre-ft/year."

While we may not feel the impact of Lake Lanier filling with sediment today, it is our kids who will feel the effects of our action or inaction tomorrow.

Click the link for a guide to help you document your inspections and maintenance efforts on your project:
["CONSTRUCTION SITE INSPECTION GUIDE"](#)

"Here's to tight lines and good times in clean abundant water!"

T. Luke Owen, Principal Trainer
NPDES Stormwater Training Institute

EROSION & SEDIMENT CONTROL COURSES

CALL FOR A **CUSTOMIZED ONSITE TRAINING** AT YOUR PLACE

**Level 1A compliance - Level 1B Enforcement
Level II Design/Review**



**Many States Take Advantage of
Our Courses to Meet Training Requirements**

Contact us for more Information
info@erosiontraining.com or 678-469-5120

For the INITIAL CLASSROOM CERTIFICATION COURSE (click one of the courses below):

[Level 1A Fundamentals \(Blue Card\) - Click Here](#)

[Level 1B Advanced Fundamentals \(Red Card\) - Click Here](#)

[Level II Introduction to Design \(Tan/Gray Card\) - Click Here](#)

for Design Pro's (Tan Card) and Plan Reviewers (Gray Card)

For RECERTIFICATION (click your preference below):

[For ONLINE Click Here](#)

[For CLASSROOM Click Here](#)

PROVIDING EROSION & SEDIMENT CONTROL TRAINING
CUSTOMIZED TO YOUR STATE REQUIREMENTS
ACROSS THE UNITED STATES & CANADA

Call Us for "Training That Helps It All Make Sense"
678-469-5120

IN THIS ISSUE

[UPCOMING CLASSES](#)

[FREE DOWNLOADABLE 2016 FIELD
MANUAL](#)

[6th EDITION GREENBOOK](#)

[The NEW GREEN BOOK and FIELD
MANUAL](#)

[MS4 CECI Course Registration](#)

[DR. DIRT SPEAKS](#)

[SNAKE BITES ON CONSTRUCTION
SITES](#)

[AMERICA NEEDS LOCAL
ENFORCEMENT](#)

[COMPLIANCE TOOL BOX](#)

[LIKE US ON FB & LINKED IN](#)

[STORMWATER CONFERENCES](#)

Quick Links

[CHECK EXAM RESULTS](#)

[COURSE SCHEDULE](#)

[NEWSLETTER ARCHIVES](#)

BUY THE NEW 2016 FIELD MANUAL

The NEW 2016 version of the FIELD
MANUAL. It is NOT THE GREENBOOK.

MS4CECI Courses



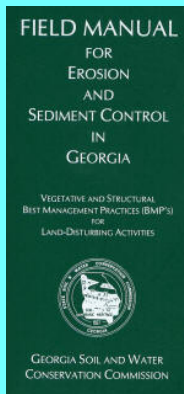
More Than Just a Training Company.....
**Hundreds of MS4CECI Inspectors Know We Are Here
TO HELP!**

NOW INCLUDES

GREEN INFRASTRUCTURE

**This course meets the MS4 NPDES Permit requirement
for Training & Green Infrastructure.**

Click Here for MS4CECI Course Dates

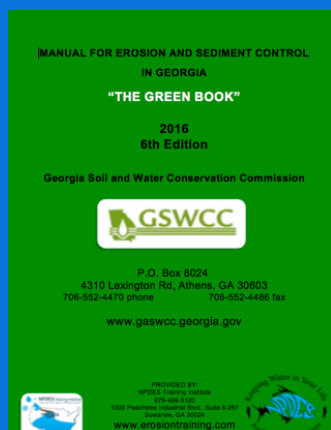


View our videos on YouTube

Buy Now



[CLICK HERE](#)
for Your Green Book



OR
DOWNLOAD A
**FREE COPY OF THE
GREENBOOK HERE!**

**AS OF JULY 1, 2016 ONLY
THE 2016 EDITION
GREENBOOK CAN BE USED in
GEORGIA.**



MS4CECI RECERTIFICATION COURSES

CLASSROOM Recertification MS4CECI
[CLICK HERE](#)

ONLINE Recertification MS4CECI
[CLICK HERE](#)

**We take pride in our *COURSE EVALUATIONS,*
these are just a few!**

"Luke is an excellent instructor, his knowledge and experience was communicated clearly and on point with interesting facts and examples."

"The trainer was knowledgeable of the material, his anecdotes and teaching method of involving others was great."

"Excellent facility, field exercise (for watershed assessment), excellent media presentation, great lunch."

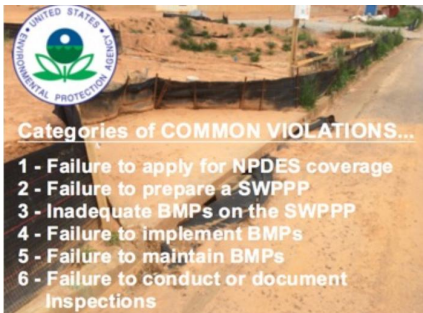
"The presentation was well organized with multiple uses of media & dry erase board illustrations. Extra resources in the jump drive were very helpful!"

"Luke has a great training style, I liked how he mixed it up."

"THE BEST STORMWATER CLASS I'VE EVER ATTENDED!"

CALL RITA @

CONTRACTOR'S CORNER



Building a Strong America
One Brick and
Creek at a Time

678-469-5120 for help registering!

www.ms4training.com

CONTRACTOR'S CORNER

By Dr. Dirt

Volume 19 Issue 1

Solving Erosion and Sediment Problems In The Field

The problem:

Heavy rainfall events caused sediment-laden runoff to exceed the effectiveness of the underground storage tank on this construction site. The overflow drained into a nearby lake. This problem could result in a Stop Work Order.



This problem requires immediate attention!



[Click Here](#) and you'll be taken to Dr. Dirt's experienced solutions for the problems shared by many contractors. You will definitely learn a few things!

Dr. James Spotts, is a master and well recognized leader in the erosion and sediment control, and that's not over stating it. His passion for helping the contractor in the field, is the force behind Dr. Dirt's Contractors Corner!

It's Spring...Be Aware of Venous Snakes!

With land disturbing activities come critters that don't like being disturbed. After hearing of a few snake bites, I thought I would post a guide developed by the snake experts, the Georgia Department of Natural Resources, that can help both you & the snakes keep safe. Yep, you heard it... there are a lot of good snakes that you shouldn't want to hurt because of the awesome job they do at keeping bad snakes and rats, etc. out of our way.



King Snake Eating a Copperhead

The good news is of the 46 species of snakes known from Georgia, only six species are venomous: Copperhead, Cottonmouth, Eastern Diamondback Rattlesnake, Timber/Canebrake Rattlesnake, Pygmy Rattlesnake and eastern Coral snake.

TRACK RAIN ON YOUR PHONE!



Save money avoiding wasted trips and time spent looking up data

Easy Set-Up:

- Download App
- Set Location
- Get Notified

Available on the App Store | FREE Trial Download | Use Coupon Code: NPDES | GET IT ON Google play

Get a BONUS during the trial and \$10 off when you upgrade

[Click Here](#)

To Assure Your Effort is Seen
for One of the Most Critical
Steps in Protecting Our Creeks!



If you get bit by a snake, here are a few tips:

- 1. STAY CALM.** Get the patient to the nearest hospital right away! Call 911 or the Georgia Poison Center (1-800-222-1222) immediately.
 - 2. TRY TO IDENTIFY THE SNAKE BY SIGHT ONLY.** Look for color, patterns and head shape.
 - 3. DO NOT TRY TO KILL THE SNAKE;** it could bite again.
 - 4. KEEP THE PATIENT CALM AND IMMOBILE** (preferably lying down).
 - 5. KEEP THE AFFECTED LIMB AT AN EVEN LEVEL** with the rest of the body.
 - 6. DO NOT GIVE THE PATIENT FOOD, DRINK, OR MEDICATION** (e.g., pain medications, alcohol, etc.).
 - 7. DO NOT USE A TOURNIQUET.**
 - 8. DO NOT CUT THE WOUND.**
 - 9. DO NOT TRY TO SUCK OUT THE VENOM.**
 - 10. DO NOT PACK THE WOUND IN ICE.**
- Bites from non-venomous snakes should be washed with warm soapy water; a tetanus shot may be needed.
- Courtesy of **Georgia Poison Center**
www.georgiapoisoncenter.org



Copperhead Snake

No single venomous snake species is found over the entire state, and only a portion of the Georgia Coastal Plain is inhabited by all six venomous species. Although differentiating among all 46 species can be difficult, becoming familiar with the colors and patterns of Georgia's six venomous snake species will enable you to determine whether any snake encountered is venomous or non-venomous.

The information in this brochure is intended to aid in identifying the venomous snake species found in Georgia through the recognition of physical traits, pattern and color. Caution should be used when approaching any snake, and snakes found in the wild should only be handled by experienced people after proper identification.

[CLICK HERE for your SNAKE GUIDE](#)

Regulatory Enforcement on a Local Level Is Critical to America's Water Quality



Accountability for compliance with water quality permits is the reason why America's water quality is different than Asia's water quality. Today, it appears the Georgia EPD is under funded as proven by the small number of inspectors they've employed in one of the fastest growing states in the country.

America relies on local enforcement efforts to insure our streams, lakes and coasts are protected.

Research shows:

5% will violate water quality laws no matter what,

20% will comply with water quality law s no matter what , and



NEED HELP with DUST
CONTROL, SEDIMENT
BASINS?

CALL JIM SPOTTS

770-216-9514

www.southeastenvironmentalconsultants.com



75% will comply only with effective Local Enforcement!

"Improving the Efficiency and Effectiveness of Compliance Monitoring and Enforcement of Environmental Policies"

Cheryl Wasserman, USEPA

COMPLIANCE TOOL BOX



NPDES Training Institute
"Training That Helps It All Make Sense!"



NPDES Permit Construction Compliance Guidance

Construction Inspection Forms for NPDES Permit Compliance

GREEN BOOK (Manual for E&SC in Georgia - New 2016)

FIELD MANUAL for E&SC in Georgia - New 2016

WHO NEEDS TO BE CERTIFIED in GEORGIA - FACT SHEET

Enforcement Requirements for Local Issuing Authorities

EPD GUIDANCE TO SWCC DISTRICTS FOR PLAN REVIEWS

PONDs - BUILDING or RENOVATING

STREAMBANK and SHORELINE Stabilization Restoration


PERMITTEE SCENARIOS FOR COMPLIANCE

GA Stormwater Management Manual (GI Guidance)

GA Coastal Supplement

FIND IMPAIRED WATERS WHERE YOU LIVE

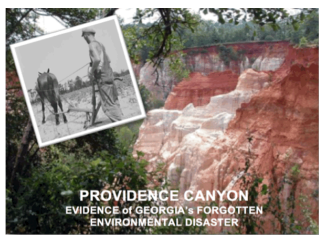


 Like us on Facebook

View our profile on **LinkedIn**



SEMPER FI
for AMERICA!



Never Forget the
Past, It's Our Greatest
Teacher!



ASSOCIATED GENERAL CONTRACTORS

Save 10%

2019

APRIL - STATEWIDE



USE COUPON CODE
"APRIL2019"

**Contact Rita at 678-469-5120 for
YOUR DISCOUNT**

THIS OFFER EXPIRES on April 30, 2019



**MORE STORMWATER CONFERENCES &
TRAINING EVENTS**



[SOUTHEAST STORMWATER ASSOCIATION \(SESWA\)](#)



[INDIANA MS4 PARTNERSHIP](#)



[GEORGIA RURAL WATER ASSOCIATION](#)



[GEORGIA ASSOCIATION OF WATER PROFESSIONALS](#)



Respecting our neighbors downstream is what America is all about and it's the NPDES program that helps us do that! _

OUR CHILDREN will be living through decisions we make today with our water.

NPDES is an investment into our nations future generations so they can also have an equally great place to live, swim, fish, boat, and hunt tomorrow!

Sincerely,
NPDES  TRAINING
INSTITUTE

A handwritten signature in blue ink, appearing to read "T. Luke Owen".

T. Luke Owen, R PG MS4CECI
President

www.npdestraining.com

www.ms4training.com

www.erosiontraining.com

tlowen@npdestraining.com